

Do cables running through cable trays need conduits





Overview

TC-ER-rated cables can be installed in exposed runs outside the cable tray, up to 6 feet between the cable tray and connected equipment, and without conduit—provided that the cable is secured and protected from mechanical damage, per code. Conduit, on the other hand, is a rigid or flexible tube that provides additional mechanical protection and environmental. Cable trays are more preferable in large buildings or factories since they are not closed and can be readily repaired. But how do you decide which one is right for your project?

In this post, we'll explore the key differences between cable trays vs conduits, highlight their pros and cons, and guide you toward the best choice based on your application. They provide a versatile and efficient solution for managing wires over long distances.



Do cables running through cable trays need conduits



Best Practices for Installing Cables in Trays

Quick Installation Checklist (Key Steps) Cable tray cable installation generally follows these steps: Inspect cables before

[Contact Us](#)

Cable Conduit vs. Cable Tray: Alternatives To Open Wiring

Two common alternatives to open wiring (types of an enclosed wiring system) are cable conduit and cable tray. Let's focus on which one to choose for

[Contact Us](#)



Conduit vs Cable Trays: Choosing the Right Electrical Raceway

Cable trays generally require less skilled labor during installation, leading to lower initial expenses. However, conduits may

[Contact Us](#)

Cable Trays vs Conduits: Which One Should You

While exact pricing varies, cable trays generally require less labor and fewer materials, making them more cost-effective for large-scale installations. Conduits,



Cable Tray vs. Conduit: Which Is Better for Large

Choosing between cable trays and conduits for large installations significantly impacts cost, installation efficiency, safety, and maintenance. Cable

[Contact Us](#)

Types of Cable Containment Systems: Trays, Trunks,

Discover the main types of cable containment systems--trays, trunking, and conduits--and learn how to choose the right solution for safe,

[Contact Us](#)



Understanding Cable Pathways, Cable Conduits, Cable

Power Cable Conduits Various types of conduits are available, including metal, non-metallic, flexible, and liquid-tight options, each suited to specific applications. In

[Contact Us](#)



Conduits and cable trays , BUILD

Running electrical cables everywhere can become very messy and create maintenance nightmares. Conduits, cable trays and other cable management systems make a big difference.

[Contact Us](#)



Conduit, trunking and cable trays

7.5.13 Cables running through inaccessible areas such as walls, floors and solid ceilings shall be installed, without exception, in conduit or trunking so as to be withdrawable in the future. In such

[Contact Us](#)

conduits to cable tray , Information by Electrical Professionals for

should conduits be bonded to the cable tray that the conductors leave and lay in the tray? thanks Yup. There's a fitting for that. I forget the name of it, but I have a picture of it in my head. I am

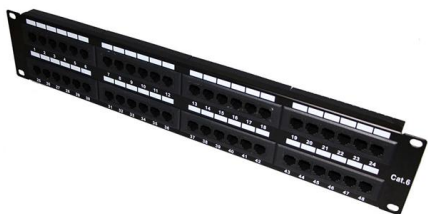
[Contact Us](#)



A Guide to Installing and Supporting Electrical Cable Trays

A professional guide to installing electrical cable tray systems per NEC Article 392. Covers support, securing cables, and fill calculations.

[Contact Us](#)





Cable Tray Fill Rules (NEC 392)

Cable tray is the preferred wiring method for industrial facilities, data centers, and large commercial buildings where routing dozens or hundreds of

[Contact Us](#)



Do Tray Cables Need to Be in Conduit? A Complete Guide

Tray cables are fundamentally designed for use in cable trays rather than conduit. However, conduit becomes necessary when cables are underground and not direct-burial rated, in

[Contact Us](#)

Conduit or Cable Tray? The easy guide.

Cable Tray: According to the National Electrical Code (NEC), a cable tray is a unit or assembly of units or sections and associated fittings forming a rigid structural system used to securely fasten or

[Contact Us](#)



Cable Trays vs Pipes (Conduits)

6. Simpler installation - Compared to conduits, cable trays can be set up much faster. They also facilitate easy installation even in the hands of less

[Contact Us](#)



Cable Tray vs. Conduit: A Comparison for Large-Scale Cable

When using a tray system, all a worker has to do is reach up and place a new cable. With a conduit system, you are always forced to pull out the old wires only to put in a new one, or

[Contact Us](#)



Cable Tray SHIB NAL

Cable trays are not raceways, but they are treated as a structural component of a facility's electrical system. Cable trays are a part of a planned cable management system to support, route, protect and

[Contact Us](#)

Using IEC Standards in Cable Tray and Conduit System

Cable trays and conduits serve different yet complementary purposes. Trays support large numbers of power and control cables, while conduits offer

[Contact Us](#)



Cable Tray vs Conduit: Which Is Best for Your Project?

Choosing the right pathway for power and data cabling affects everything from installation speed to long-term reliability. Two proven approaches dominate: cable trays and

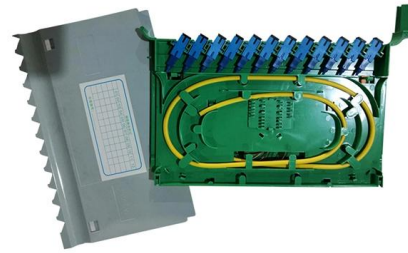
[Contact Us](#)



Tray Cable vs. Conduit: Why Mesh Cable Trays Reduce Labor Costs

Conduit installation is a critical aspect of electrical work, and it involves the careful running of cables through various types of conduits to ensure both safety and functionality.

[Contact Us](#)



Contact Us

For datasheets, pricing, or custom fiber access solutions, please visit:
<https://frindel.es>