



FRINDEL OPTICS

Do 10 Gigabit optical modules adapt to gigabit speeds





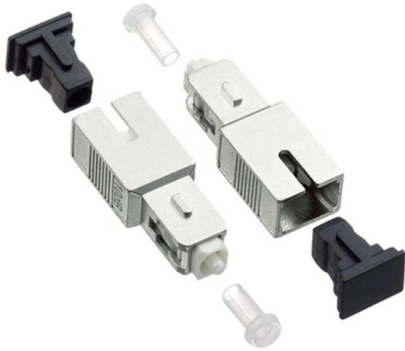
Overview

10G SFP+ Optical Module is a type of SFP+ transceiver that supports 10 Gigabit per second (10Gbps) data rates and is an enhanced version of the standard SFP (Small Form-factor Pluggable) transceiver. 10Gbps optical module is an important development direction in future network technology, which provides 10Gbps transmission speed and can meet the higher bandwidth requirements of application scenarios. In modern data-intensive applications, such as cloud computing, big data analysis and. When you plan a network, picking the right Transceiver speed is less about following a trend and more about matching real constraints: how many ports you need, how far the fiber must run, whether your gear prefers single or multi-lane electrical interfaces, and how much power and cooling your. 10GBASE-LR is a 10-gigabit Ethernet optical standard that operates at 1310 nm over single-mode fiber (SMF), supporting link distances of up to 10 km. So other than that what are the differences between them?

Follow along with us in this article to explore: Gigabit vs. 10G SFP + is a miniaturized photoelectric conversion module specifically designed to support high-speed network communication standards such as 10 Gigabit Ethernet (10GbE).



Do 10 Gigabit optical modules adapt to gigabit speeds



Gigabit optical Transceiver vs. 10G optical Transceiver:

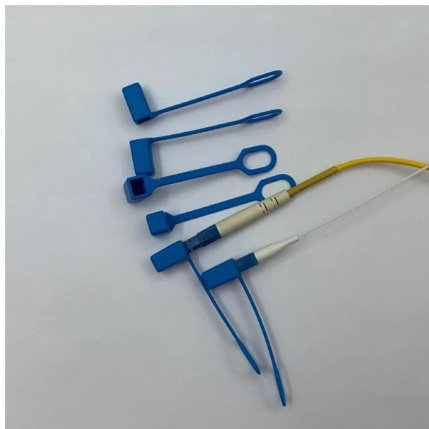
This article will focus on analyzing the characteristics, performance and application scenarios of Gigabit optical transceivers and 10 Gigabit optical transceivers, and

[Contact Us](#)

10 Gigabit Ethernet Fiber Design Considerations

The 10 Gigabit Ethernet operating distances provided in the tables below are limited by the channel insertion loss, the cable bandwidth for multimode fiber, and the optical transceiver characteristics

[Contact Us](#)



Introduction of 10G SFP+ Optical Modules

Scalability: They allow you to easily upgrade your network to 10 Gigabit speeds by simply swapping out the modules. Flexibility: They come in

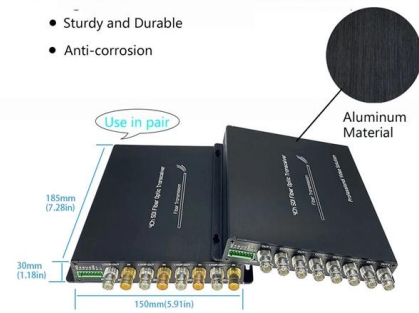
[Contact Us](#)

What's the difference between Gigabit Optical Module vs 10 Gigabit

With the continuous progress of information technology and the expansion of application scenarios, the network's demand for higher bandwidth and faster transmission speeds is becoming

High Quality Aluminum Housing with Compact Size

- Sturdy and Durable
- Anti-corrosion



Optical Transceiver Speeds Guide: 1G, 10G, 25G, 40G,

Below I walk through the common speeds -- what they mean in practice, where they still make sense, and the straightforward trade-offs that matter when you're

[Contact Us](#)



Gigabit vs. 10 Gigabit Optical Transceivers: What's the Difference?

In a literal sense, the biggest difference between gigabit optical transceivers and 10 gigabit optical transceivers is obvious. The transmission rate of a gigabit optical module is 1,000 Mbps (1 Gbit/s),

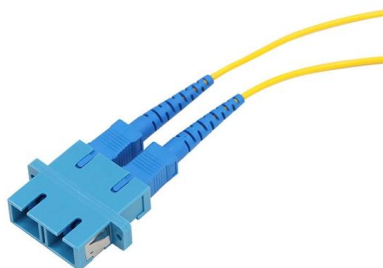
[Contact Us](#)



What Is 10GBASE-LR? SMF 1310nm 10km SFP+ Explained

10GBASE-LR is a long-reach 10-gigabit Ethernet physical layer standard defined under IEEE 802.3ae. The "LR" designation stands for Long Reach, meaning it is engineered to reliably transmit 10 Gbit/s

[Contact Us](#)





Cisco 10 Gigabit Modules

Discover Cisco 10 Gigabit Ethernet Modules, offering high-speed, reliable connectivity to enhance network performance and scalability.

[Contact Us](#)



What is an SFP Optical Module? The Complete Guide to

The complete technical guide to SFP optical modules (SFP, SFP+, SFP28). Understand the core function, compare data rates (1G to 25G), learn

[Contact Us](#)

Cisco 10GbE Optics Guide

Once an exotic, high end technology, 10 GbE is now mainstream and widely deployed both in the data center and in the campus environment. 10 gigabit

[Contact Us](#)



Optical Transceiver Speeds Guide: 1G, 10G, 25G, 40G,

40G -- legacy and specific-fit cases Forty-gigabit ports used to be a common spine or aggregation choice, usually built from four 10G lanes (QSFP + SR4). Today,

[Contact Us](#)



Comprehensive Guide for Optimal 10G SFP+ Module

This guide is an all-encompassing look at 10G SFP+ modules designed to help you understand their features, types, and help determine the

[Contact Us](#)



The Future of Gigabit SFP Modules: Exploring How

The Advantages and Benefits of Using 1G SFP Modules in Networking Solutions Gigabit SFP modules offer several advantages that

[Contact Us](#)

What's the difference between Gigabit Optical Module vs 10 Gigabit

For applications such as high-performance computing and cloud computing, 10 Gigabit optical modules are able to provide faster transmission speeds and higher data throughput, providing

[Contact Us](#)



OM3 Fiber Patch Cable Family



Difference between Gigabit optical modules and 10G optical modules

It is easy to understand literally that the main difference between Gigabit optical modules and 10 Gigabit optical modules is that the transmission rate is different.

[Contact Us](#)

A Comprehensive 1G Optical Modules Guide to



These modules can transmit data at speeds of up to 1 gigabit per second, making them suitable for a wide range of applications. From supporting

[Contact Us](#)



10 Gigabit Ethernet (10GbE) Standards: The Definitive

Final Words This guide is for you if you are ready to go "all in" with 10GbE Ethernet standards. What Is 10 Gigabit Ethernet (10GbE)? 10 Gigabit

[Contact Us](#)

Understanding SFP to SFP+ Compatibility: A

Most SFP and SFP+ transceivers operate at their rated speed as they are manufactured. Thus, a 10Gb SFP+ optic on a 10Gb switch cannot auto

[Contact Us](#)



From Gigabit to 100G: Evolution of Media Converters and Optical

Optical Transceivers: From 1G to 100G Early Adoption: SFP and SFP+ The Small Form-factor Pluggable (SFP) transceiver was one of the earliest widely adopted optical modules,

[Contact Us](#)



Selecting the right modules for gigabit, multi-gigabit

Optical-module applications Optical modules are used to convert electrical impulses into light signals, transmit those signals over an optical-fiber network, and decode

[Contact Us](#)



Can a gigabit optical module chip be used in a 10-gigabit optical

A common industry question is: Can the chips used in a 1G optical module work in a 10G module? The short answer is no, because chip design, modulation methods, bandwidth, and signal integrity

[Contact Us](#)

A 5-Minute Guide to Understanding 10 GPON

10G PON (10 Gigabit Passive Optical Network) refers to a passive optical network with fiber link transmission speeds of up to 10 Gbps. Like GPON and EPON, 10G

[Contact Us](#)



What is 10G PON and How Does It Work

Understanding 10G PON Definition and Overview 10G PON, short for 10-Gigabit Passive Optical Network, represents the next generation of fiber

[Contact Us](#)

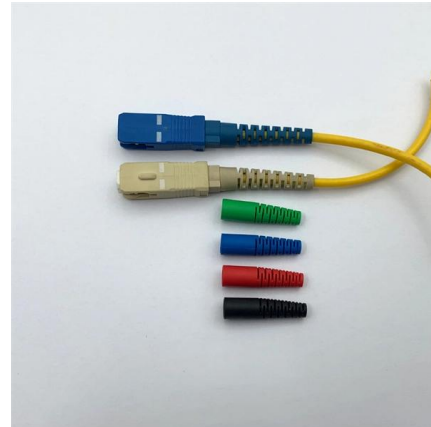




Gigabit Ethernet

Gigabit Ethernet was the next iteration, increasing the speed to 1000 Mbit/s. The initial standard for Gigabit Ethernet was produced by the IEEE in June 1998 as

[Contact Us](#)



Understanding the Distinctions: What's the Difference Between 10/100

Upgrading to Gigabit can greatly enhance the speed and performance of your network, but it is important to ensure that all connected devices also support Gigabit speeds to fully benefit

[Contact Us](#)

Single-mode Fiber and 10 Gigabit Ethernet

Single-mode Fiber and 10 Gigabit Ethernet Standard single-mode fiber can address nearly any application, depending on the level of cost and complexity that an operator is willing to employ. The

[Contact Us](#)



SFP-10G-SR vs SFP-10G-LRM vs SFP-10G-LR, Which

Among 10 Gigabit optical modules, the shipment volume of short-distance optical modules ranks first. This article will detail the characteristics and differences of

[Contact Us](#)



Multimode SFP+: 10GBASE-SR Specs, Fiber Types and

10GBASE-SR modules support 10-Gigabit Ethernet transmission, typically operating at 10.3125 Gbps line rate, which aligns with the IEEE 802.3ae

[Contact Us](#)



Introduction of 10G SFP+ Optical Modules

Increased bandwidth: They provide significantly faster data transfer speeds compared to older Gigabit Ethernet standards. **Scalability:** They allow you

[Contact Us](#)



Contact Us

For datasheets, pricing, or custom fiber access solutions, please visit:
<https://frindel.es>