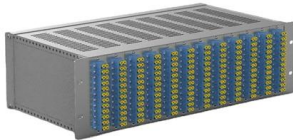


Distribution cabinet with single busbar





Distribution cabinet with single busbar



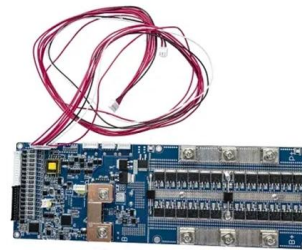
ABCN Busbar Arrangement in Distribution Cabinets: A

ABCN Busbar Arrangement in Distribution Cabinets: A Core Principle of Electrical Safety Inside every professionally built distribution cabinet, the neatly

[Contact Us](#)

What Is a Busbar System in Electrical Power Distribution?

A busbar system is a metallic strip or bar--typically made of copper, aluminum, or brass--used in electrical power distribution to conduct electricity within switchgear, distribution



[Contact Us](#)

STAINLESS STEEL WIRE MESH

- Long-lasting and durable
- Comprehensive specifications
- Customized non-standard products



Bespoke Busbar Systems

In partnership with the leading manufacturers of IP55 & IP68 Cast Resin Busbar Systems, we are able to offer a complete solution for all your busbar

[Contact Us](#)

Busbar Basics: Understanding the Fundamentals of Electrical

Conclusion: Understanding the basics of busbars is vital for ensuring safe and efficient electrical power distribution. By grasping the core principles of busbar design, material selection, and maintenance,



Busbar systems

The use of busbar systems with their versatile rail-adaptable connection, switching and installation devices is an ideal and cost-effective electrotechnical enhancement of modern distribution

[Contact Us](#)



Busbars , Electrical Busbars & Copper Busbars , RS

Here, at RS we have a comprehensive range of Busbars supplied to you from industry-leading brands including Schneider Electric, Siemens, ABB, Eaton, and Legrand. As mentioned before busbars are

[Contact Us](#)



UniGear ZS1 , ABB

UniGear ZS1 is built as a single busbar, double busbar or double level solution. It is also certified for use in special and harsh applications such as marine or seismic.

[Contact Us](#)





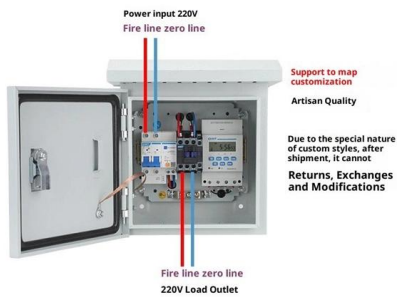
Busbar systems

RiLine busbar systems for individual switchgear and controlgear. Complete solutions up to 1600 A for AC or DC applications. 3-pole, tool-free mounting, short circuit

[Contact Us](#)



Product Wiring Diagram



Single busbar systems up to 5000 A

The permissible rated busbar current of the proven switchgear type ZX2 is increased by parallel connection of the two busbar systems. The two physical busbar systems are combined electrically into a

[Contact Us](#)

Standard cubicle configurations for a medium voltage

2. Busbar Systems Medium voltage busbar systems consist of two general arrangements. The main switchgear distribution bus has three busbar

[Contact Us](#)



BUSBAR Range-Distribution systems for distribution

The BUSBAR range, in addition to distribution terminal blocks, consists of flat and shaped busbars in copper and aluminium in order to make distribution system

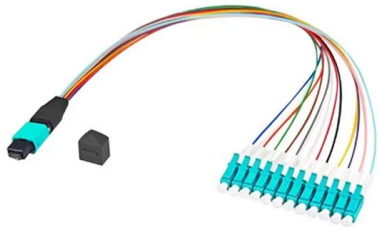
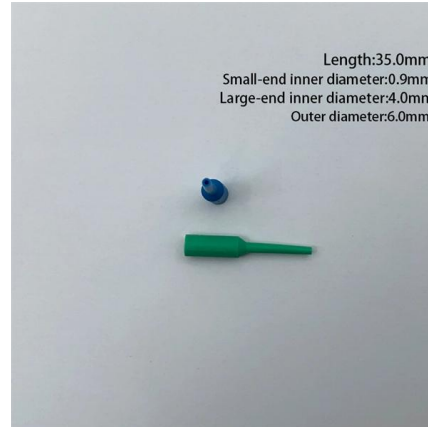
[Contact Us](#)



DATA RACK BUSBAR

Whisker free and tin plated solid form conductors ensure for better heat dissipation, higher short circuit values and longer operation life while significantly contributing to the "Availability" challenge in the

[Contact Us](#)



Catalog Extract LV 10 · 10/2022

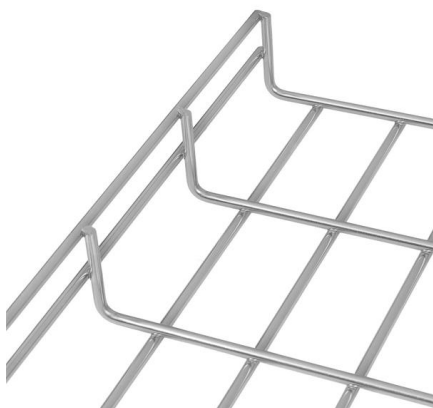
Our busbar systems for electrical installations offer a particularly easy way of fitting distribution systems with electrotechnical components. The modular design saves space, while quick assembly contacts

[Contact Us](#)

GRL Low-Voltage Enclosed Busbar Systems

Modern power distribution increasingly relies on modular busbar systems for efficient and safe electrical wiring. A low-voltage Enclosed busbar system uses conductive bars (instead of

[Contact Us](#)



Busbar Cabinets: Enhancing Power Distribution with High-Efficiency

Discover the advantages of busbar cabinets over traditional power distribution systems, including handling of high amperages, UL 891 compliance, and scalability. Learn about integration

[Contact Us](#)



RY250714 Cabinet , Cabinets with busbar and base , Ensto

The units have main busbar connections suitable for 1200A and neutral busbar suitable for 1000A along with generator connection on the neutral only in

[Contact Us](#)



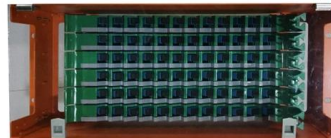
Z-busbar system

When safety is top priority, a busbar system with IP2X protection is the best choice. ABB Z-busbar offering is available for 400A, 630A, 1600A and 2500A, to be used

[Contact Us](#)

Distribution systems , Hager

Discover the range of distribution and communication enclosures for your residential and small commercial projects. Discover the offer of distribution boards for the realization of your electrical



[Contact Us](#)



Electrical cabinet busbar

Electrical cabinet busbar, also known as electrical cabinet busbar, plays an extremely important role in the electrical system, such as the "heart" that

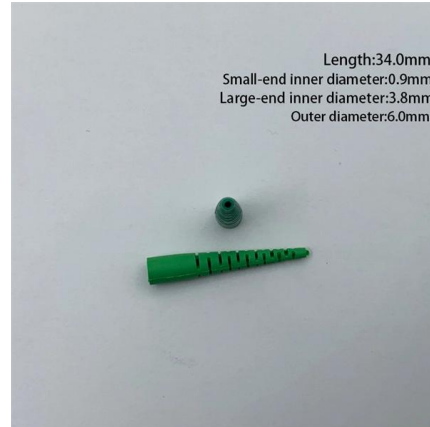
[Contact Us](#)



Types of Busbar Arrangements in Grid Stations and

The different types of busbar arrangements used in Grid stations and Substations. The Single, Mesh, Ring and Double Busbar arrangements.

[Contact Us](#)



Busbar systems

RiLine busbar systems for individual switchgear and controlgear. Complete solutions up to 1600 A for AC or DC applications.

[Contact Us](#)

Busbar Systems & Electrical Trunking , Schneider

Design a flexible and efficient power distribution system with Schneider Electric UK's innovative busbar systems. Explore Canalis busbars for a modular approach to

[Contact Us](#)



Busbar systems in electrical distribution: An in-depth

Conclusion Busbar systems are essential in electrical infrastructure, providing safe, efficient, and scalable solutions for power distribution. With types

[Contact Us](#)



Busbar in Electrical System: Types, Applications,

Busbar in Electrical System: Types, Applications, Considerations, and Maintenance Electrical busbar is the most important component in power

[Contact Us](#)



White Paper Wireless Sensornetzwerk

What is a Busbar Power Distribution System? A busbar power distribution system is a set of pre-engineered solid copper conductors that may be interlocked together to create various system

[Contact Us](#)

Contact Us

For datasheets, pricing, or custom fiber access solutions, please visit:
<https://frindel.es>