

# **Distribution box protective grounding depth**





## Overview

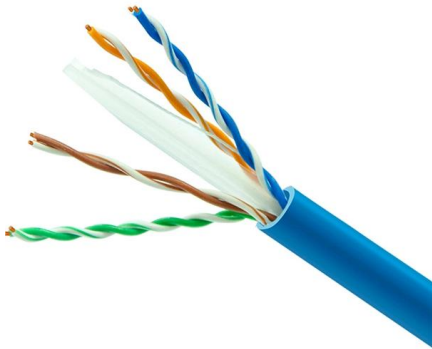
---

26 mm<sup>2</sup> (10 AWG) ground wire must be used, and in all other markets a 6 mm<sup>2</sup> must be used. Today, we're diving deep into the world of distribution box grounding, breaking down the standards, and shining a light on those sneaky mistakes that even experienced electricians sometimes make. Whether you're a seasoned pro or just starting out, this comprehensive guide will give you practical. This Grounding Standard describes the technical requirements for grounding the SEC Distribution Network installations. 8 kV) feeder outlets of HV / MV Substations down to SEC Customer interface including KWH-Meters and meter boxes.



## Distribution box protective grounding depth

---



### Size determination, installation method and wiring mode

The distribution box is the central hub of the home circuit and the general control of our daily power consumption. It is an indispensable electrical equipment. If there

[Contact Us](#)

### Nine Recommended Practices for Grounding

Equipment Grounding Conductors The IEEE Emerald Book recommends the use of equipment-grounding conductors in all circuits, not

[Contact Us](#)



### GROUNDING OF UTILITY AND INDUSTRIAL DISTRIBUTION

Essentially this workshop is broken down into system grounding, protective grounding and surge/noise protection of power and electronics systems normally found in distribution networks.

[Contact Us](#)

### Grounding Paper

Effective grounding, or earthing, of the distribution system neutral is necessary to achieve several objectives, the most important of which is the safety of the public and utility personnel. The





### **Direct Grounding Protective Box: Essential Safety and Design Insights**

Direct grounding protective boxes are used extensively across various sectors, including telecommunications, power distribution, and industrial manufacturing. They ensure critical equipment

[Contact Us](#)



### **Installation requirements for distribution boxes**

The bottom of the board (box) installed on the ground should be 5-10 mm higher than the ground; the center height of the operating handle is generally 1.2-1.5 m; there are no obstacles in the

[Contact Us](#)



### **Grounding System Installation Standards for Distribution Boxes and**

Whether you're a seasoned pro or just starting out, this comprehensive guide will give you practical insights into proper grounding techniques, with a special focus on how selecting quality materials

[Contact Us](#)





## How to ground the low voltage distribution box?

The low-voltage distribution box, as a device for regulating the circuit system, needs to be so. How should the low-voltage distribution box be grounded? Now let's

[Contact Us](#)



## Protective Grounding Methods in Transmission and

Protective grounding is done to protect living things against touch and step voltage in possible situations. These precautions are taken in energy transmission and

[Contact Us](#)

## The Importance of Direct Grounding Box for Electrical

Direct Grounding Box provides a safe pathway for the discharge of electrical charges, protecting electrical equipment and ensuring electrical safety.

[Contact Us](#)



SC connector  X 12

## The Importance of Protective Grounding Boxes

Learn about the benefits of using protective grounding boxes to prevent electrical hazards and ensure worker safety. Find out how these safety devices work and why proper installation is crucial.

[Contact Us](#)



## Grounding Practices in Power Distribution Systems

Electrode Depth and Spacing: Proper depth and adequate spacing of grounding electrodes are essential for ensuring efficient grounding. As a result, this

[Contact Us](#)



### ER 8

1.1 Preface 1.1.1 This Engineering Recommendation forms part of Annex 1 to the Electricity Distribution Code and titled Engineering Recommendation No. 8 - A Guide for Assessing the Rise of Earth

[Contact Us](#)

## The Complete Guide to Ground Rods in Electrical Systems

Ground rod: The primary grounding element  
Earth pit or inspection chamber: A protective housing that attaches to the ground rod, shielding it from the environment and facilitating future

[Contact Us](#)



## Transmission Line Grounding Guide

Paragraph 96; Ground Resistance Requirements: "Grounding systems shall be designed to minimize hazard to personnel and shall have resistances to ground low enough to permit prompt operation of

[Contact Us](#)



## Protective grounding requirements for transmission and distribution

No one should approach to within 10 feet of a protective grounded structure or any other conductive object which has been

[Contact Us](#)



## Correct Connection Method Of Grounding Wire Of

Open the distribution box and find the position marked with the grounding plate or PE letter. This position is the connection point of the grounding

[Contact Us](#)



## Grounding 101 The

low impedance ground is imperative to both surge protection designs and power quality. A regular check and upgrade (as needed) of grounding systems will reduce interference and line noise, improve

[Contact Us](#)



## ELECTRIC POWER SUBSTATIONS ENGINEERING

If the geometry, location of ground electrodes, local soil characteristics, and other factors contribute to an excessive potential gradient at the earth surface, the grounding system may be inadequate from a

[Contact Us](#)

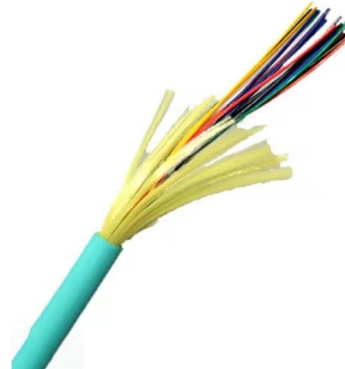




## The Ultimate Guide to Protective Grounding Boxes

Learn everything you need to know about protective grounding boxes, including their importance, benefits, and how to choose the right one.

[Contact Us](#)



### Construction Guidelines For Grounding Systems Of Stainless Steel

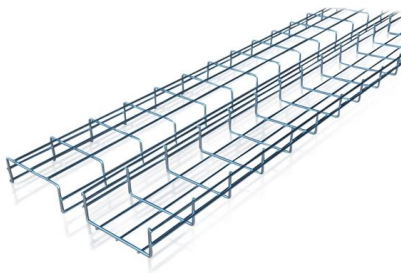
This design aims to provide a stable physical anchor point for the yellow-green grounding wire. Compared to ordinary drilled bolts, these factory-preset studs offer better mechanical strength and

[Contact Us](#)

### 6B.6--Substation Grounding

The general philosophy regarding resistance of substation grounding is, "the lower the better," with considerations for economics. The resistance from the ground mat to earth shall be one ohm, or less,

[Contact Us](#)



### GROUND GRID SPECIFICATIONS

Each Power Circuit Breaker or Power Transformer having a bushing Voltage Transformer on the tank shall have the Voltage Transformer provided with a separate ground lead, independent of the

[Contact Us](#)



## Distribution Grounding of Underground Facilities

To determine the most effective grounding methodology that will protect employees working in underground distribution primary voltages, we must examine both the hazards to which workers may

[Contact Us](#)



## Grounding in Power Transmission and Distribution Networks

Power transmission and distribution systems are earthed for electric shock and fault protection. This chapter presents the principles and practices of grounding for power systems.

[Contact Us](#)

## Specification For Protective Grounding Of Metal Parts Of Waterproof

The steel box of waterproof junction box, the steel mounting plate, the original non-conductive metal base in waterproof distribution box and the outer shell of waterproof electrical box

[Contact Us](#)



## Grounding Do's and Don'ts: Essential Best Practices for

Don't assume any ground is sufficient. All grounding systems must be properly bonded and tested poor bonding or shortcuts can create dangerous potential

[Contact Us](#)



## DISTRIBUTION BOX

Each DISTRIBUTION BOX and controller must be grounded. On the US market, a 5.26 mm<sup>2</sup> (10 AWG) ground wire must be used, and in all other markets a 6 mm<sup>2</sup> must be used.

[Contact Us](#)



**MPO-MPO** Low Smoke Halogen Free Sheath

Multimode 10 Gigabit 12 pole OM4

Insertion loss < 0.35dB Return loss > 50dB

## Microsoft Word

This Grounding Standard describes the technical requirements for grounding the SEC Distribution Network installations. SEC Distribution System extends from the MV (33 kV, 13.8 kV) feeder outlets

[Contact Us](#)

## Contact Us

---

For datasheets, pricing, or custom fiber access solutions, please visit:  
<https://frindel.es>