

Distribution Box Current Monitoring System





Distribution Box Current Monitoring System



Power Distribution Box with Smart Monitoring Features , Modern

Smart distribution boxes don't just detect issues--they predict and alert users before problems escalate. Whether it's a loose connection causing voltage fluctuations or a circuit drawing

[Contact Us](#)

WORLD WIDE WEB JOURNAL Home

Capturing the state of distributed systems with XML Rohit Khare, Adam Rifkin November 1997pp 207-217 article

[Contact Us](#)



Low voltage Distribution Box Monitoring

In this Paper, the primary focus is on the distribution box health monitoring from which load power distribution monitoring is done. Distribution box is one from which power is distributed to low level.

[Contact Us](#)



Power-D-Box Systems , E-T-A

The High Power-D-Box MRU is a compact power distribution system for plug-in type hydraulic-magnetic circuit breakers. The integrated DC sensors enable

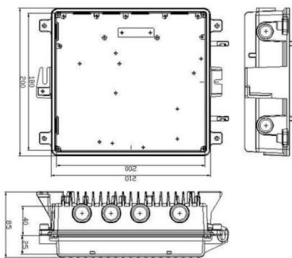
[Contact Us](#)



CMS - Circuit Monitoring Systems Branch monitoring for

Short description Circuit Monitoring Systems (CMS) are multichannel measurement systems for branch monitoring of electrical installations. Each system consists of a Control Unit and

[Contact Us](#)



Efficient Power Line Voltage & Current Monitoring

Discover how distribution line inspectors monitor power grid voltage and current levels for enhanced reliability and safety.

[Contact Us](#)



Energy Box with Real-time Power Monitoring

The EC1000 Energy Box features real-time status, system logs, threshold alerts,

[Contact Us](#)



Power-D-Box Systems , E-T-A

Energy Monitoring System High Power-D-Box
Precise measuring data acquisition in accordance
with the Energy Efficiency Act (EnEfG) The
Energy Monitoring

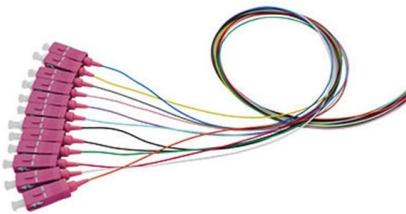
[Contact Us](#)



Power Distribution Boxes: A Complete Overview , Eventech

Power distribution boxes, or PDUs, are essential for efficiently distributing electrical power to various equipment and devices in industrial and commercial settings.

[Contact Us](#)



Design and Implementation of State monitoring System for Distribution Box

Cable junction in distribution box is the weakest part of secure operation in power system, and the cable operation faults are mainly caused by junction faults. Therefore, we design a flexible and convenient

[Contact Us](#)



Intelligent Remote Distribution Box Monitoring Solution

The distribution box is embedded with the DTU distribution device, distribution device power module, and distribution device power supply. By leveraging the intelligent

[Contact Us](#)





Distribution Box Guide: Types, Components & Solutions

Understand distribution boxes (DB boxes) in 5 minutes. Learn about types, components, functions, and uses. Find the perfect DB box for your needs.

[Contact Us](#)



A Low-Voltage Distribution Box with Energy Monitoring and Carrier

A low-voltage distribution box with both energy monitoring and carrier communication capability is developed to collect, store and transmit multi-channel current, voltage, power, and

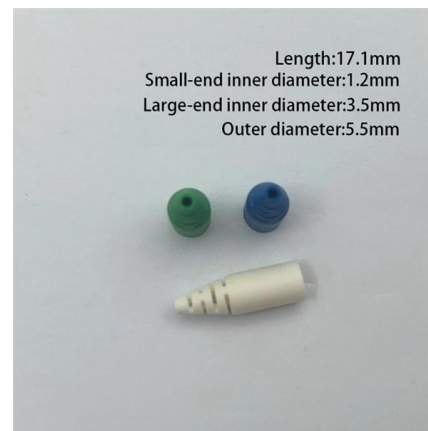
[Contact Us](#)



CMS - Circuit Monitoring Systems Branch monitoring for

CMS - Circuit Monitoring Systems Short description Itichannel measurement systems for branch monitoring of electrical installations. Each system consists of a Contr I Unit and sensors with

[Contact Us](#)



CMS Series Circuit Monitoring System

With the CMS-700, you can measure the AC and DC currents in the outgoing circuits via up to 3 x 32 sensors and in the process capture the energy and output data (line-side active and reactive power)

[Contact Us](#)





Circuit Monitoring System , ABB Electrification U.S.

The Circuit Monitoring System (CMS) is an ultra-compact and high-performance multichannel measurement system for AC and DC branch monitoring. It

[Contact Us](#)



CAT 7 FTP JACK

Plug & Play Monitoring for Distribution Substations

Since the infrastructure is very durable and not all distribution substations are equipped with sensors, this paper presents a Plug & Play monitoring system that can be easily integrated into

[Contact Us](#)

Innovations in Distribution Boxes: Smart Monitoring and Remote

This article explores the latest innovations in Distribution Boxes, focusing on smart monitoring and remote maintenance capabilities that are redefining power distribution management.

[Contact Us](#)



Elecnova: Dc Pdu/Power Distribution Monitoring Unit,

Introduction BCM201 series is DC measurement. The BCM series precision power distribution monitoring unit is used to monitor the power operation parameters of

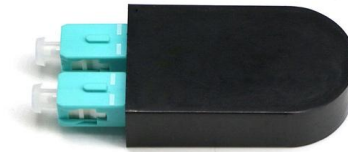
[Contact Us](#)



Measuring and monitoring relays

As the heart of plant-level digitalization, ABB's Distributed Control Systems (DCS) are designed to transform your multi-faceted, 24/7 process operations. Our market-leading control architecture

[Contact Us](#)



Distribution Grid Monitor

The DGM provides accurate end-of-line voltages to Conservation Voltage Reduction (CVR) and Volt-VAR Optimization (VVO) schemes. When equipped with current

[Contact Us](#)

How Does a Power Distribution Box Work

Learn how a power distribution box works step by step--from incoming power to circuit protection and smart monitoring--for safe, efficient electricity delivery.

[Contact Us](#)



CMS Series Circuit Monitoring System

Compact current monitoring for the Modbus RTU architecture The Control Unit CMS-600 is a compact Modbus variant for professional current monitoring. The CMS-600 system enables you to measure

[Contact Us](#)



Monitored PDU-Smart Power Distribution Units

Monitored PDU If you're looking for a monitored PDU solution, the Smart PDU from Server Technology offers input current monitoring on an easy-to-view LED, and



[Contact Us](#)



WTYJ-PD type distribution box monitoring system

The WTYJ-PD type monitoring instrument complies with the international standard IEC 62053-21/22/23:2020. Through the "cloud-pipe-terminal" integrated architecture, it realizes the optimization

[Contact Us](#)

IoT-Based Low-Voltage Power Distribution System

The low-voltage distribution community actively carries out applications such as station operation status monitoring, camping and distribution

[Contact Us](#)



Contact Us

For datasheets, pricing, or custom fiber access solutions, please visit:
<https://frindel.es>