

# **Distance between network cabinets and power distribution boxes**





## Distance between network cabinets and power distribution boxes

---



### ABB Cable Distribution Cabinets , Products

Kabeldon and ABB Low Voltage distribution systems: our cable distribution cabinets provide a robust and safe solution with uncompromised lifetime. They are designed for outdoor usage.

[Contact Us](#)

### Q& A: Is distance satisfactory to protect electrical

For indoor electrical installations, the dedicated space must be of equal depth and width to that of the equipment itself and extend from the floor to a

[Contact Us](#)



### Choosing the Right Power Distribution Cabinet for Your Electrical Needs

Discover the importance of selecting the right power distribution cabinet for system reliability, efficiency, and compliance with industry standards. Learn about critical features, material

[Contact Us](#)



### How to Properly Install a Network Cabinet PDU

Learn how to install a network cabinet PDU for efficient power distribution, proper cable management, and enhanced equipment safety in your IT setup.



### **NEC + OSHA Electrical Panel Clearance Requirements**

Unfortunately, it is often difficult for people to remember exactly how much distance from a panel things can be. Even if they know how much room in inches is required, they may not be able

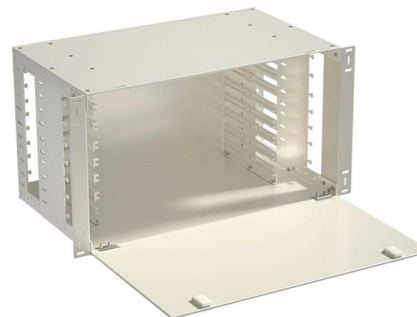
[Contact Us](#)



### **Requirements And Specifications For Installation Of**

In flammable and explosive environments, explosion-proof distribution boxes should be selected and explosion-proof treatment should be carried out.

[Contact Us](#)



### **Design guidelines for substation and power distribution**

Design considerations Indoor Substations and Underground Cable power distribution Substation specifications in this guide are based on Indoor

[Contact Us](#)

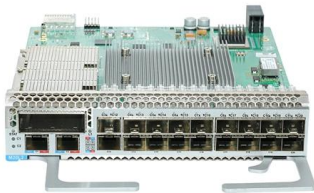




## General Requirements for Cabinets and Racks

The distance between the rear of the chassis and the perforated rear door of the cabinet (required for airflow in the cabinet, if used) should be a minimum of 3.0 in. (7.6 cm). No clearance is required

[Contact Us](#)



## Distribution Boards

ABB's Smart Distribution solutions focus on enhancing the efficiency, flexibility, and reliability of electric distribution networks. These solutions aim to create more resilient and sustainable power distribution

[Contact Us](#)

## Spacing Requirements for Power Distribution and Terminal Blocks

Power Distribution blocks are evaluated to UL1953, the Power Distribution Block standard and are listed for general installation, meaning they have adequate spacing for most OEM and field applications.

[Contact Us](#)



## Requirements for spacing between cabinet columns

The spacing arrangement of cabinet rows should be comprehensively determined based on the size of the operating space, cable direction, cabinet heat dissipation, cabinet power supply,

[Contact Us](#)



## Power Distribution vs. Control Cabinets: What's the

Learn the key differences between power distribution and control cabinets. Explore functions, design considerations, standards, and applications in

[Contact Us](#)



## Safe Clearances for Electrical Equipment: Working

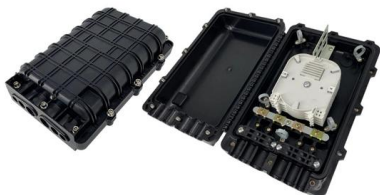
The aisle (s) between pieces of such equipment, with live parts on both sides of the aisle, must be at least 4 feet wide. If the voltage exceeds 600,

[Contact Us](#)

## How to build an Intermediate Distribution Frame (IDF)

The intermediate distribution frame (IDF) plays a critical role in providing your internet & Wi-Fi. We'll walk through how to design and build one.

[Contact Us](#)



## Annex I

Signal and power cables are routed in different cables trays according to the type of signal or power. ITER has based its cable distribution on the IEC 61000-5-2 recommendations for Earthing and

[Contact Us](#)

## Network cabinet design considerations



Sometimes, a network cabinet not only includes server equipment but also computer equipment, such as keyboards and monitors. Design issues that arise are space

[Contact Us](#)



### **What's An IDF Room? Complete Guide for Businesses**

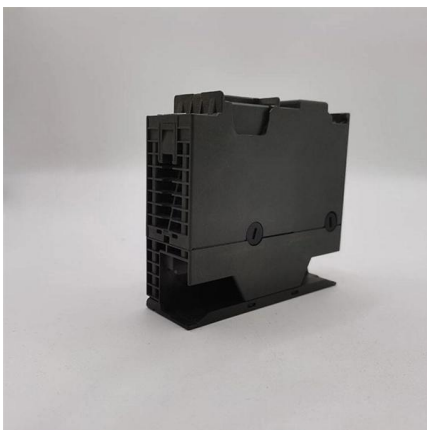
An IDF room or cabinet is essentially a telecommunications hub that serves a limited area, typically one floor or zone within a large building. The IDF

[Contact Us](#)

### **Distribution Boxes Explained: Types, Functions, and**

Learn about distribution boxes, their types, functions, and safety features to ensure efficient and secure electrical power distribution in any building.

[Contact Us](#)



### **House service connection boxes/pillars**

Plastic connection cabinets and pillars as grid branches House service boxes, cable transfer boxes and pre-metering fuse boxes made of polyester are used at the interface between the supply network and

[Contact Us](#)



## NEC Essentials for Architects

When electrical distribution equipment, whether switchboards, panelboards, safety switches or transformers, is located on two adjacent walls or directly across from one another, the working

[Contact Us](#)



## Power Distribution Equipment

Each has its own unique standards and application guidelines, and one facet of good power system design is the knowledge of when to apply each type of equipment and the limitations of each type of

[Contact Us](#)

## NEC Article 110.34: Electrical Room "Basics"

Minimum clearances are established for work spaces in front of high voltage - electrical equipment such as switchboards, control panels, switches, circuit

[Contact Us](#)



## NEC Working Clearance Requirements: A Visual Guide

This table outlines the specific distances for Condition 1, 2, and 3 scenarios. Additionally, the code specifies requirements for the Width of working space and

[Contact Us](#)



## Power Distribution Boxes Explained Simply

Discover the essentials of a Power Distribution Box--how it works, key types, benefits, and tips to ensure safe, efficient electrical power management.

[Contact Us](#)



## Power Distribution Equipment

Introduction Power Distribution Equipment is a term generally used to describe any apparatus used for the generation, transmission, distribution, or control of electrical energy. This section concentrates

[Contact Us](#)

## Contact Us

---

For datasheets, pricing, or custom fiber access solutions, please visit:  
<https://frindel.es>