

Direction of cable tray inside vertical shaft





Direction of cable tray inside vertical shaft



Cable Trays Installed Vertical In A Different Manner , Eng-Tips

They are designed as I-beams, channels or extruded shapes to support the weight in the "normal" vertical direction. An I-beam laying on its side cannot support the same weight.

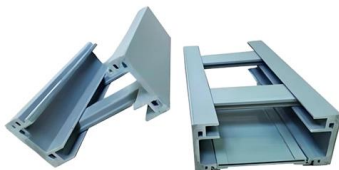
[Contact Us](#)

Best Practice Guide to Cable Ladder and Cable Tray Systems

Any vertically orientated component, whether cable ladder, cable tray or support, acts structurally as a column; it is not usual to consider cable ladder or cable tray in this way because they are not



[Contact Us](#)



What is a Vertical Cable Tray?

A Vertical Cable Tray is a specialized support system designed to carry electrical and data cables securely in a vertical or riser direction. Think of it

[Contact Us](#)

Cable Tray Trunking & Ladder Installation Method for

Resources For Electrical & Electronic Engineers
Cable Tray Trunking & Ladder Installation Method
for Projects The purpose of this article is to define the



Understanding Cable Pathways, Cable Conduits, Cable

A cable pathway or raceway is a protective channel or enclosure made of materials like metal or plastic, used to manage and safeguard electrical cables and wires. It

[Contact Us](#)



Cableizer

Generally, it is easier to pull the cable up instead of down, but depending on the installation that is not always an option. Once you have the cable in place, you

[Contact Us](#)



Cable Tray Technical Guide A practical guide to product selection and

In designing supports for a cable tray system, consideration should be given to the loads associated with future cable additions and any additional loading that may be applied to the cable tray system (e.g.,

[Contact Us](#)





Complete cable tray manual for electrical engineers and

Complete cable tray manual for electrical engineers and designers (on photo: power cable management ladder tray systems assembled aluminum cable tray ladder

[Contact Us](#)



Cable Tray / Ladder Tray INSTALLATION PowerTray

General Installation Guidelines: For more information refer to the latest NEMA standards and local building codes. Trough tray field support and frequency depends on the weight and construction

[Contact Us](#)

Installation Of Cable In Cable Trays: NEC, Safety

Installation of Cable in Cable Trays ensures proper routing, cable management, NEC compliance, grounding, fire safety, and load capacity.

[Contact Us](#)



INSTALLATION GUIDE

We have more than a decade's worth of experience making and designing quality cable tray and cable management systems. Our knowledgeable production team works closely with each customer to

[Contact Us](#)



INSTALLATION GUIDE

The right direction for rolling is the opposite direction to the direction that the cable is wrapped onto the reel. When rolling the reels make sure the direction and the rate of roll is controlled.

[Contact Us](#)



Instrumentation Cable trays Installation in vertical

The article describes a improvement for better life and easy maintenance for instrumentation cable trays for industry. The practices if applied

[Contact Us](#)

GUIDE CABLE TRAYS TECHNICAL

When fitting cable trays and their accessories, the products are cut on site to create changes of direction, adjust sections, etc. Damage can also occur during handling; as a result, both the

[Contact Us](#)



Verticals Cable Tray Management Solutions , Cable

Hutaib Electricals, a trusted cable tray manufacturer in India, offers vertical cable management solutions for high-rise buildings. Their basket cable trays and wire

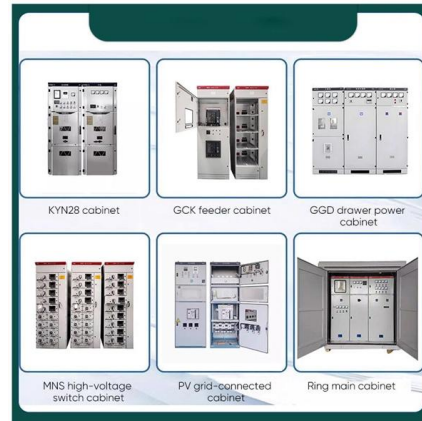
[Contact Us](#)



A Guide to Installing and Supporting Electrical Cable Trays

A professional guide to installing electrical cable tray systems per NEC Article 392. Covers support, securing cables, and fill calculations.

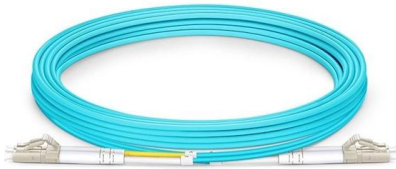
[Contact Us](#)



GENERAL INFORMATION

Cable trays or raceways often provide a convenient, safe and efficient method of fiber optic cable installation. Trays can be installed in ceilings, below floors and in riser shafts. When installing fiber

[Contact Us](#)



Installation of Cable Tray, Trunking And Accessories

Before beginning installation, be sure that the method statement for installation of cable tray, trunking, and accessories is approved by the project and construction manager before the

[Contact Us](#)



Cable Tray Technical Guide A practical guide to product selection and

A practical guide to product selection and installation This guide for engineers and installers has been developed by ABB as a practical reference regarding cable tray characteristics, installation, and

[Contact Us](#)



Document DICOS

Vertical adjustable splice plates should be designed and placed to maximize the rigidity of the cable tray, unless vertical adjustable splice plates are part of a system specifically designed for other placement,

[Contact Us](#)



Best Practice Guide to Cable Ladder and Cable Tray Systems

This guide covers cable ladder systems, cable tray systems, channel support systems and associated supports intended for the support and accommodation of cables and possibly other electrical

[Contact Us](#)

Installation of EHV Cables

This paper elaborates on the various methods of cable laying and the advantages and disadvantages of the same. The common way of cable laying: buried method, tunnel method, cable

[Contact Us](#)



CABLE TRAY

The weight per meter (foot) of the cable multiplied by the number of meters (feet) in the vertical drop will, in many cases, exceed the load carrying capacity of the cable tray component, such as the one or

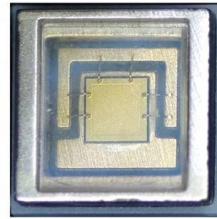
[Contact Us](#)



Cable Tray Spacing Standards for Installation and Safety

Key Factors Impacting Cable Tray Spacing
Understanding cable tray spacing is key to meeting safety regulations and maintaining system

[Contact Us](#)



Cable laying method for large-depth vertical shaft

The application discloses a cable laying method for a large-depth shaft, belongs to the technical field of cable construction, and solves the problem that cables with large

[Contact Us](#)

Guide to cable support systems

Here, a distinction is made between a vertical direction of movement (so-called rising sections) and the horizontal direction of movement (normal power station application).

[Contact Us](#)



Best Practices for Installing Cables in Trays

Quick Installation Checklist (Key Steps) Cable tray cable installation generally follows these steps: Inspect cables before

[Contact Us](#)



Contact Us

For datasheets, pricing, or custom fiber access solutions, please visit:
<https://frindel.es>