

Dimensions of the hot aisle in a quantum communication equipment room





Overview

Maximum Aisle Length: When equipment cabinets form a continuous row, the aisle length should not exceed 16 meters. Efficient airflow management in data centers relies heavily on proper Hot Aisle and Cold Aisle configurations. Most systems and storage products are designed to pull chilled air through the front of the system and exhaust hot air out of the back. System to include demountable ceiling supported wall panels above the equipment racks and floor supported door assemblies at each end of the contained requirements: Glazing to meet or exceed ASTM seal the gap between the panels and the cabinets.



Dimensions of the hot aisle in a quantum communication equipment

Hot Aisle Containment , Legrand



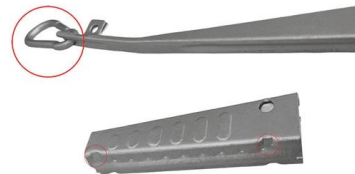
By channeling hot exhaust away from equipment and toward cooling, data centers can maintain a stable operating temperature and reduce operational costs. Benefits: Increased Energy Efficiency: By

[Contact Us](#)

Data Center Temperature: Hot And Cold Aisle Containment

Hot and cold aisle containment systems are crucial for data center temperature. Click to learn about airflow, cooling efficiency, and thermal

[Contact Us](#)



Aisle Containment Systems Physical Containment Systems

Hot aisle/cold aisle configuration is a best practice solution that separates hot and cold air streams. This method raises the temperature of the air returning to a Computer Room Air Conditioner (CRAC) unit,

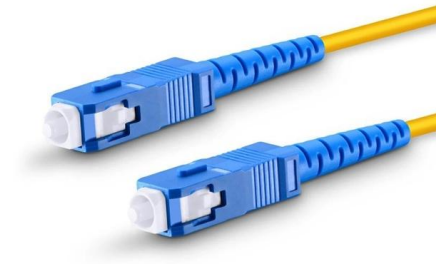
[Contact Us](#)



Hot Aisle Containment (HAC) for Data Centers Explained

Looking for a way to reduce energy expenses for your data center? According to Energy Star, data centers with hot/cold aisle arrangements can

[Contact Us](#)



Optimizing Data Center Cooling: The Power Of Hot And

Discover how to optimize your data center cooling system with hot and cold aisle containment. Learn about the assessment, design, installation, and

[Contact Us](#)

Gordon DataCEL Hot Aisle Containment SPECIFICATION

Coordinate all work with other trades to be performed in or on ceiling system and cabinets including light fixtures, HVAC equipment, Cable trays, sprinkler systems and wall partition systems to ensure other

[Contact Us](#)



A Guide to Hot and Cold Aisle Containment for Optimizing Server Room

By optimizing airflow with hot and cold aisles, data centers can reduce their energy consumption, resulting in cost savings and a smaller carbon footprint. Extended Equipment Lifespan Servers and

[Contact Us](#)





Data Centre Cooling: Hot Aisle and Cold Aisle Design

The hot aisle/cold aisle configuration ensures a consistent supply of cool air, reducing the likelihood of equipment failures due to overheating. Better airflow

[Contact Us](#)



Hot and Cold Aisle Containment: What You Need to Know

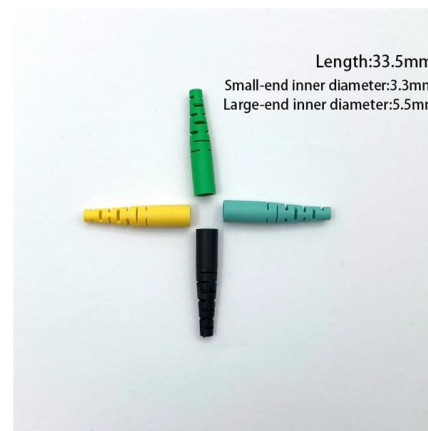
Cold aisle containment systems separate the cold aisle from the hot by capturing the cold air and feeding it directly into the intakes of equipment.

[Contact Us](#)

Cold Aisle Containment & Hot Aisle Containment

, What is Cold Aisle Containment? Cold Aisle Containment Systems (CACS) are one of the most widely-recognized data center cooling solutions. By managing air flow, CACS restrict the loss of cold air,

[Contact Us](#)



Aisle Containment Systems Physical Containment Systems

Door Options A choice of door options is available for use with the aisle containment system to provide the right combination of safety and security. Dual sliding doors or Vertical doors can be chosen for

[Contact Us](#)



Hot Aisle Containment in Data Centers , Subzero

The projects below represent custom hot aisle containment configurations engineered for specific facility constraints, equipment layouts, and cooling

[Contact Us](#)



ANSI/TIA/EIA 942 Data Center Design Guidelines and

Hot aisles are behind racks and cabinets. If there is an access floor, cable trays for telecommunications cabling should be located under the access floor in the hot

[Contact Us](#)

GUIDE TO ICT - SERVER ROOM ENERGY EFFICIEN

mentation of hot aisle/cold aisle containment. The hot aisle/cold aisle approach involves lining up server racks in alternating rows with cold air intakes facing one way and hot air exhausts facing the other.

[Contact Us](#)



(PDF) Data Center Technical Design: Layout Footprint

The IT load rating in kW or kVA and the physical space dimensions of the IT and equipment rooms are two critical design elements for a DC's facility

[Contact Us](#)





Data Center Hot Aisle Containment

Hot aisle containment is critical for maintaining cooling efficiency and preventing equipment overheating in a data center. Also known as HAC, hot aisle

[Contact Us](#)



6W0001Z1_Stand_Ref_Guide2.qxd

Hot aisles are behind racks and cabinets. If there is an access floor, cable trays for telecommunications cabling should be located under the access floor in the hot aisles. minimum of 1 m (3 ft) of front

[Contact Us](#)

General guidelines for data centers

Perforated tiles should be placed exclusively in the cold aisles, aligned with the intakes of the equipment. No perforated tiles should be placed in the hot aisles, no matter how uncomfortably hot.

[Contact Us](#)



What are hot and cold aisles in the data center?

In its simplest form, hot/cold aisle data center design involves lining

[Contact Us](#)



A DEEP DIVE INTO THE WORLD OF HOT & COLD AISLE

OPERATIONAL ASPECTS OF HOT AND COLD AISLE CONTAINMENT ZONES Airflow Management: Utilize perforated tiles, grates, or directional vents to guide cold air to the server inlets and direct hot

[Contact Us](#)



Hot vs Cold Aisle Containment: 40% Cooling Savings

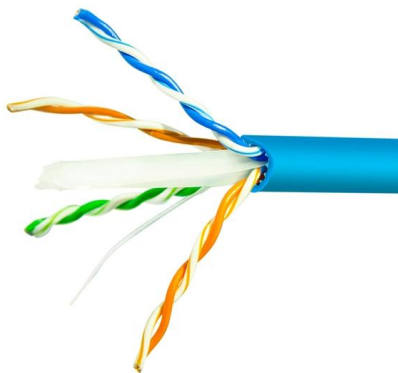
If data centers were action movies, hot and cold aisle containment would be the unsung heroes, saving the day without getting the glory. While

[Contact Us](#)

FOCUSED COOLING USING COLD AISLE CONTAINMENT

While either hot aisle or cold aisle containment systems can be installed and are both capable of increasing efficiency and cooling today's high heat data centers, meaningful differences exist in how

[Contact Us](#)



Comparison of ICT equipment air-intake temperatures between cold aisle

The objective of this paper is to clarify the differences between cold aisle containment (CAC) and hot aisle containment (HAC) with regard to the air-intake temperature of the ICT equipment in the rack.

[Contact Us](#)



A DEEP DIVE INTO THE WORLD OF HOT & COLD AISLE

BENEFITS OF DATA CENTER HOT & COLD AISLE CONTAINMENT ZONE. Energy Cost Reduction: Lower energy consumption and operational costs through targeted cooling strategies. Improved

[Contact Us](#)



Contact Us

For datasheets, pricing, or custom fiber access solutions, please visit:
<https://frindel.es>