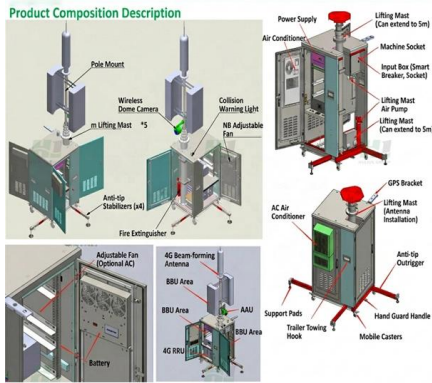


Dimensions of right-angle turns in cable trays





Dimensions of right-angle turns in cable trays



Types of Bends in Wire Mesh Cable Trays: A Detailed

Wire mesh cable trays are widely used in industrial and commercial installations to support and manage cables effectively. One of their greatest

[Contact Us](#)

Cable Tray Width, Dimensions and Specifications as per

Learn about cable tray width dimensions and specifications as per NEC standards. Understand types, sizes, materials, and installation guidelines for safe and

[Contact Us](#)



How to make a 0-90° vertical angle for cable trays?

How to make a 0-90° vertical angle for cable trays? Elbow joint RVS is pushed inside the cable tray and attached with the included screw set. Elbow joint RVS can be

[Contact Us](#)



Make a 90 Bend in Electrical Cable Tray

The Easy Guide to How to make a 90 electrical cable tray bend to measurement of your choice. Great if you are new or just forgot how to do it, this easy

[Contact Us](#)



Cable tray manual

Nearly every aspect of cable tray design and installation has been explored for the use of the reader. If a topic has not been covered sufficiently to answer a specific question or if additional information is

[Contact Us](#)



Cable Tray Installation Specifications , PDF , Sheet

This document provides installation guidelines for cable trays, including: 1) Cable trays come in perforated and ladder types, with perforated trays made of steel

[Contact Us](#)



Full cable tray systems specification document

B. Product Data: Submit manufacturer's data on cable tray including, but not limited to, types, materials, finishes, rung spacings, inside depths and fitting radii. For side rails and rungs, submit cross

[Contact Us](#)





7 Types of Cable Trays: How to Choose the Right One

Cable tray systems are engineered support structures designed to route, support, and protect insulated electrical cables used for power distribution,

[Contact Us](#)



Steel cable tray

Formed side rails are welded to 15/8 in. wide rungs to provide maximum rigidity and strength. Rung design includes exclusive Ty-Rap cable tie slots on 1 in. centers.

[Contact Us](#)

Cable Tray Technical Guide A practical guide to product selection and

A practical guide to product selection and installation This guide for engineers and installers has been developed by ABB as a practical reference regarding cable tray characteristics, installation, and

[Contact Us](#)



Cable Tray

Cable Ladders Straight sections of ladder type cable trays consist of two longitudinal side rails, connected by individual transverse members, or rungs, which are welded to the side rails or bolted in

[Contact Us](#)

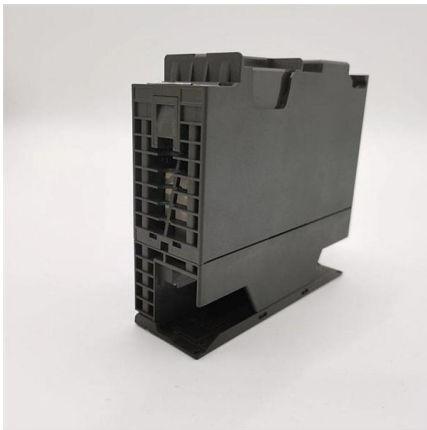




Trunking Cutting Techniques Guide , PDF

The document provides instructions for forming various bends and joints in electrical trunking and cable trays. It describes: 1) How to mark and cut a right-angle

[Contact Us](#)



Cable Tray Dimensions Guide: Standard Sizes, Tray

We will first explain standard cable tray dimensions used across the industry, then examine how dimensions vary by tray type, and finally show how to

[Contact Us](#)

Best Practice Guide to Cable Ladder and Cable Tray Systems

This guide covers cable ladder systems, cable tray systems, channel support systems and associated supports intended for the support and accommodation of cables and possibly other electrical

[Contact Us](#)



CableTray Book English db

Aluminum Cable trays fabricated of extruded aluminum are often used for their high strength-to-weight ratio, superior resistance to certain corrosive environments and ease of installation. They also offer

[Contact Us](#)

TECHNICAL AND SIZING DATA



Deflection is the vertical sag of the tray at its mid point and is at right angles to the tray's longitudinal axis. The issue of deflection is not one of a structural nature, but a cosmetic (appearance) one.

[Contact Us](#)



TYPICAL DETAILS OF CABLE TRAYS AND ACCESSORIES

FOR SPECIFIC SITE REQUIREMENTS (E.G. IRREGULAR ANGLE BENDS SUCH AS 30°/60' BENDS, ETC) AS PER SITE LAYOUT CONDITIONS, TRAY ACCESSORIES SHALL BE FABRICATED AT

[Contact Us](#)



CABLE TRAY, CABLE LADDER, CABLE TRUNKING CATALOGUE

Fitting and accessories. with the same or different width of the cable run. All fittings are available in sizes and types corresponding to the straight cable tray sections. These fittings are including: elbow,

[Contact Us](#)



CableTray Book English

For example, the first selection issue is the environment to which the cable tray will be subjected. This selection will lead to the best material for your application.

[Contact Us](#)





Typical Design Philosophy of Cable Trays for Power

Cable Tray Support System Cable tray supports shall be fabricated from standard MS angles/channels/flats and depending upon site conditions it shall be

[Contact Us](#)



B-Line series Cable Tray Design Considerations

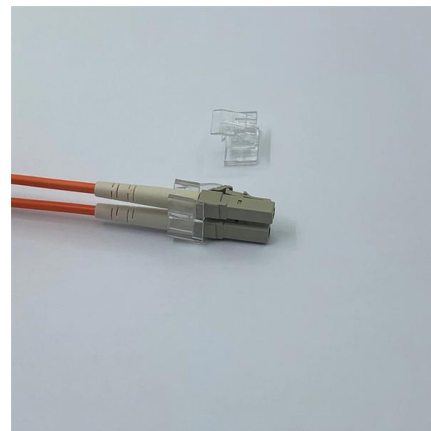
As an industry leader in cable tray, Eaton offers one of the widest ranges of cable management solutions available in the market today with its B-Line series portfolio. With unmatched quality and service, we

[Contact Us](#)

CABLE TRAY SYSTEMS GUIDE

Some applications may require the cable tray to support the weight of a single, dead object in addition to the cable loads. Specifications typically require this to be applied at the midpoint of the span between

[Contact Us](#)



Cable Tray Dimensions Guide: Standard Sizes, Tray

Standard Cable Tray Dimensions Cable tray dimensions are not chosen at random. Across most global markets, they follow well-established

[Contact Us](#)



Contact Us

For datasheets, pricing, or custom fiber access solutions, please visit:
<https://frindel.es>