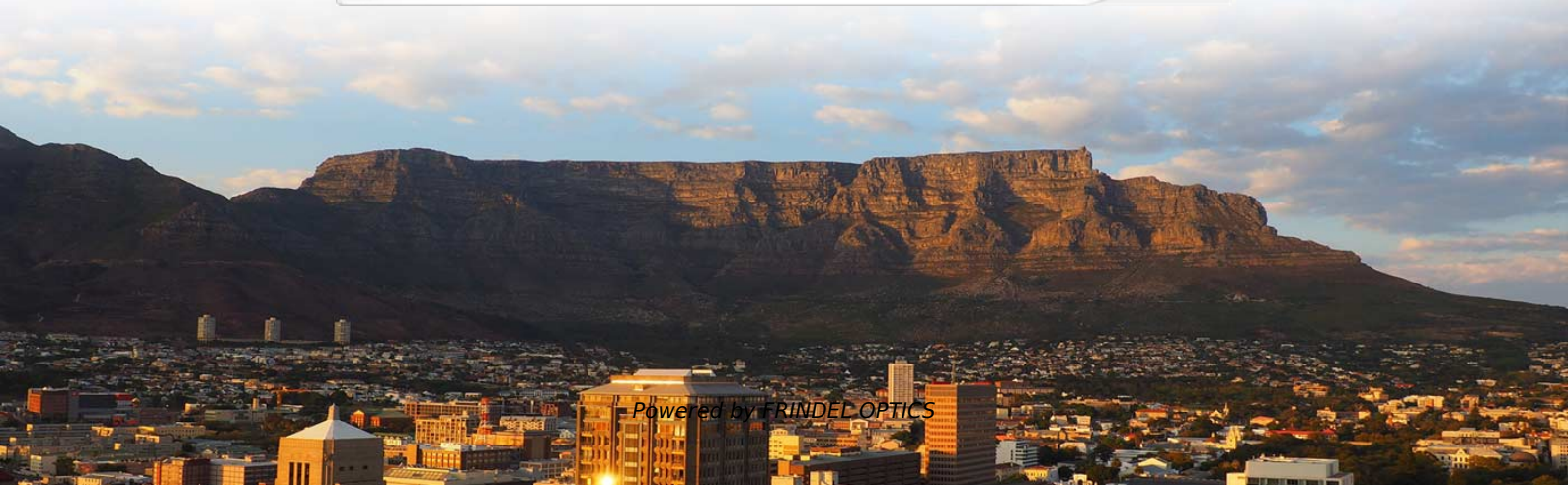




FRINDEL OPTICS

Dimensions of electrical distribution boxes inside high-rise shafts





Dimensions of electrical distribution boxes inside high-rise shafts



Microsoft Word

The minimum inner dimensions of the room shall be 2000 mm X 2000 mm to serve up to 32 meters for type 1, and 3800 mm X 3610 mm to serve up to 96 meter for type 2 to provide adequate working

[Contact Us](#)

Electrical Installation Wiring Pictures: Building's electrical rooms layout

Now in order to get the electrical power, each of these electrical panels needs to be connected to the riser cables. There are eight apartment units at each floor. So there would be eight sets of tap off unit

[Contact Us](#)



Power distribution inside large buildings , EEP

The arrangement of the rising mains depends on the size and

[Contact Us](#)



Application Models for the Power Distribution of High

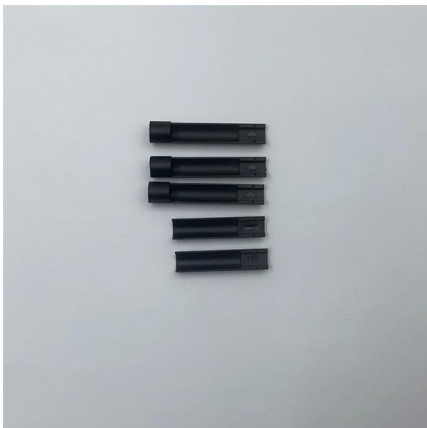
Because of the numerous options for utilizing, arranging and styling the rooms and floors of a high-rise building, there are always specific requirements



10 Things to Know About Shaftwall Enclosures and

What are shaftwall enclosures? A shaftwall enclosure is a fire-rated wall assembly that can be installed from one side. It is used to enclose elevator shafts, stairwells

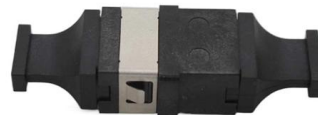
[Contact Us](#)



High-Rise Building Electrical Design , PDF , Electric

A high-rise building has unique electrical system requirements due to its height and number of floors. The system must supply power for general lighting, HVAC,

[Contact Us](#)



Power Distribution in Large Buildings , PDF , Electrical

Distribution Inside Large Buildings In large buildings the type of distribution depends on the building type, dimension, the length of supply cables, and the loads. The

[Contact Us](#)





Electrical Installation Wiring Pictures: Building's

Diagram 7 - The single line diagram for individual apartment's electrical panel The main electrical supply cables to the upper floors are run inside the riser shaft. The

[Contact Us](#)



TIP applications for power distribution , Application manual for high

This application manual provides an overview of the installations of a high-rise building that are important for the electrical power distribution and describes the basic and preliminary planning of the

[Contact Us](#)

Installation requirements for distribution boxes

Distribution boxes shall be made of non-combustible materials; open distribution boards may be installed in production places and offices with low electric shock risk; enclosed cabinets shall

[Contact Us](#)



Secondary unit substations design guide

Normally operated as two electrically independent unit substations, with bus tie breaker (T) open, and with approximately half of the total load on each bus. In case of failure of either

[Contact Us](#)



Pull Box Sizing : A Comprehensive Guide for Engineers

Proper sizing of pull boxes is essential to ensure safe, code-compliant, and maintainable electrical installations. This guide provides a practical breakdown of

[Contact Us](#)



Modern practice for LV/MV substation and power

Modern Practice for Buildings In the present era, the presence of reliable and uninterrupted electricity is commonly assumed in the majority of

[Contact Us](#)



Standard Electrical Enclosure Sizes: Chart, Dimensions

Electrical enclosure sizes are not universal, but most manufacturers follow common size families. This guide explains typical wall-mount and floor

[Contact Us](#)



CN215631333U

The utility model relates to the technical field of building electricity, in particular to an electrical vertical shaft structure of a high-rise residential building.

[Contact Us](#)

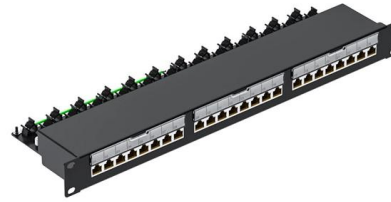




Space for E& M Services in Buildings

This document provides guidelines for allocating space for various electrical and mechanical services in buildings. It discusses space requirements

[Contact Us](#)



Electrical Box Dimensions: Find the Right Size for Any

This guide explains standard electrical box dimensions by type, compares common sizes, and helps you select the right box for residential,

[Contact Us](#)

Building Elevator Systems

BUILDING ELEVATOR SYSTEMS For most people residing in urban cities, elevators have become an integral part of their daily life. Simply stated, an elevator is a hoisting or lowering mechanism,

[Contact Us](#)



Raised Floor Trunking Systems

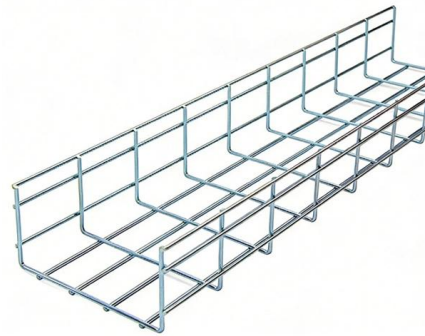
Our floor boxes are IP2X rated in accordance with BS EN50085-1. A choice of 1, 2, or 3 compartment boxes are available according to the layout plans, desired configuration and services requirements.

[Contact Us](#)



In the above context, the General Specification for Electrical Works (Internal) aims to lay down General guidelines to ensure safe, efficient, reliable and economical use of electricity.

[Contact Us](#)



Everything You Need to Know About Elevator Shafts

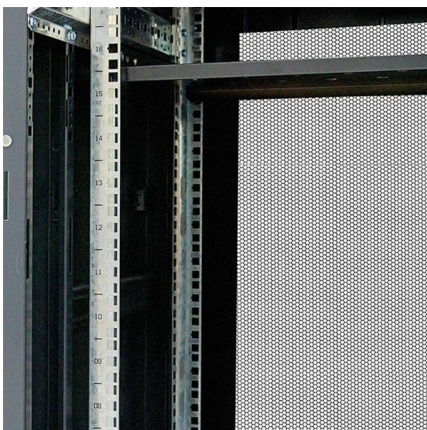
A Guide On Everything You Need to Know About Elevator Shafts At this guide, you will understand elevator shafts better. We will explain how they are designed and

[Contact Us](#)

Power Distribution in Large Buildings , PDF , Electrical

This document discusses electrical distribution systems for large buildings. It explains that the distribution system has both vertical (rising mains) and

[Contact Us](#)



Electrical design manual for high rise buildings and

Network design with SIMARIS design This application manual provides an overview of the electrical design installations of a high rise building

[Contact Us](#)



Designing Service Risers in High-Rise Buildings to

Service risers concentrate power, metering and distribution gear into vertical shafts that serve multiple floors. That efficiency is great for space but

[Contact Us](#)



Contact Us

For datasheets, pricing, or custom fiber access solutions, please visit:
<https://frindel.es>