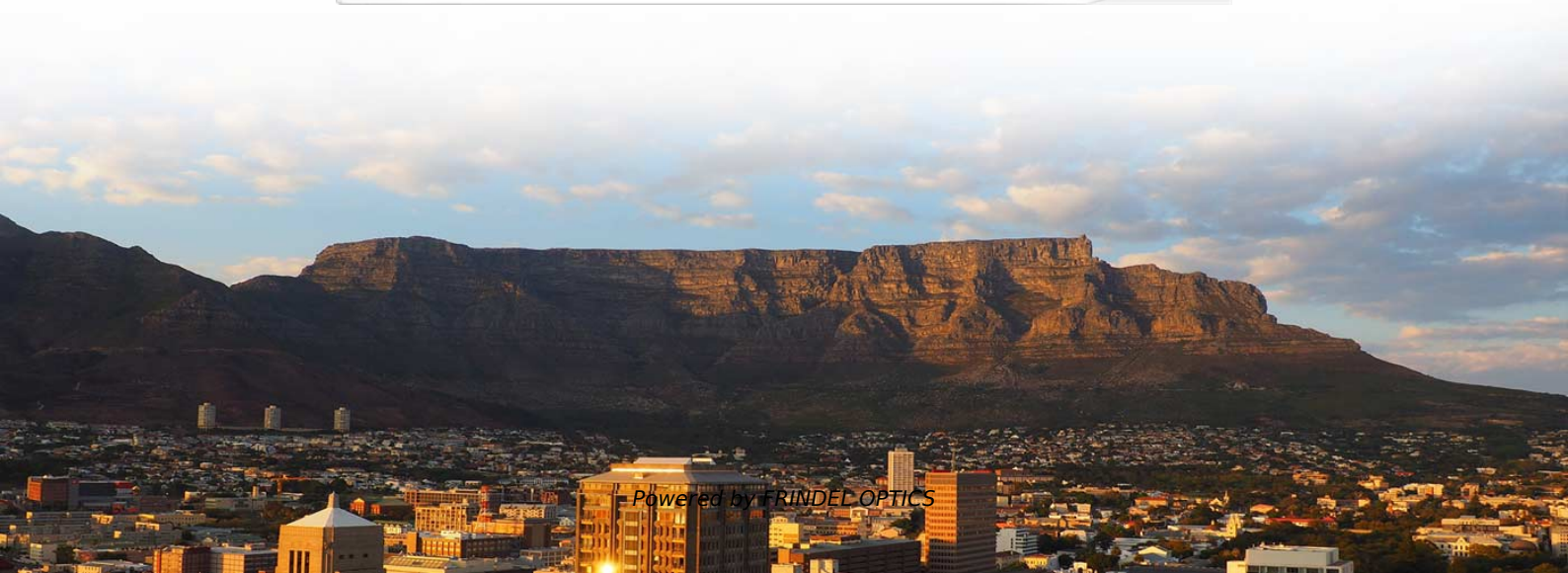


Dimensions of aluminum alloy cable trays for edge computing





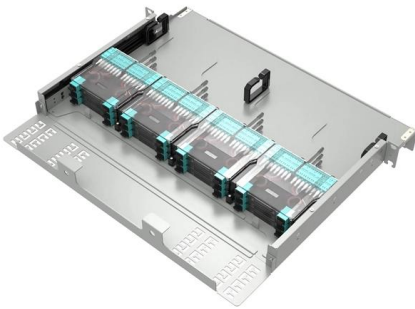
Overview

Both width and the height of tray are functions of the number, size, spacing and weight of the cables in the tray. For cable tray applications lacking sufficient space for the number of supports required for standard-length sections, choose T&B Cable Tray long-span AH1-8 series aluminum cable tray in 40-foot (12. Is your cable tray system optimized for safety, dependability, space and cost savings?

Cable tray (or cable ladder) systems are a popular alternative to electrical conduit systems, as they have an outstanding record for dependable service, design flexibility and cost savings in commercial and. is an Edmonton based company dedicated to excellence in the manufacturing of electrical ladder tray.



Dimensions of aluminum alloy cable trays for edge computing



Aluminum Cable Tray: Lightweight & Corrosion-Resistant

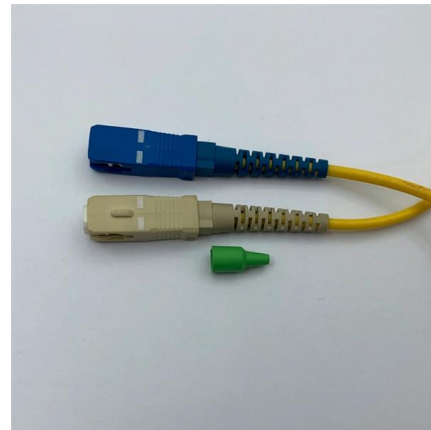
Discover the benefits of aluminum cable trays for industrial and outdoor use. Find durable, lightweight solutions with fire resistance and easy installation. Click to explore top-rated

[Contact Us](#)

TECHNICAL AND SIZING DATA

Even though a 900 mm wide tray has six (6) times the volume of a 150 mm wide tray, it cannot carry any more cable weight. When piling cable in tray, the required air separation between cables can be

[Contact Us](#)



Full cable tray systems specification document

B. Cable tray systems are defined to include, but are not limited to straight sections of [ladder type] [trough type] [solid bottom type] [channel type] cable trays, bends, tees, elbows, drop-outs, supports

[Contact Us](#)

Aluminum Cable Tray

Aluminum cable tray with high corrosive resistance performance and durable life is widely used in the corrosive and harsh environments.

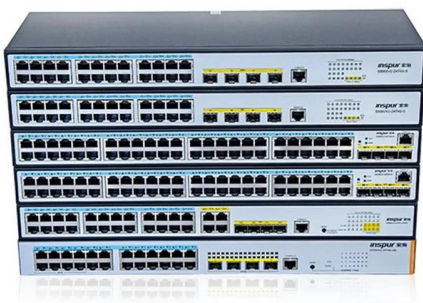
[Contact Us](#)



Aluminum Alloy Cable Tray is Lightweight to Install

Aluminum alloy cable tray is made of aluminum alloy through extrusion molding. Compared with stainless steel cable trays, aluminum alloy cable trays are much

[Contact Us](#)



B-Line series Cable Tray Design Considerations

Ladder cable tray is available in widths of 6, 9, 12, 18, 24, 30, 36, 42 and 48 inches with rung spacings of 6, 9, 12 or 18 inches. Note that wider rung spacings and wider cable tray widths decrease the overall

[Contact Us](#)



Channel tray

T& B channel tray systems are fabricated from a corrosion-resistant metal (low-carbon steel, stainless steel or an aluminum alloy) or from a metal with a corrosion-resistant finish (zinc or epoxy). The

[Contact Us](#)

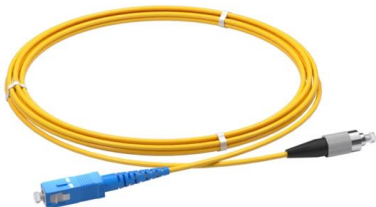


CableTray Book English



Aluminum cable tray Straight lengths -- Tray bottom types: ladder, ventilated and solid trough
Ladder Extra wide aluminum rungs are welded to extruded aluminum I-beam side rails. Every second rung is

[Contact Us](#)



Cable Tray Size and Dimensions: How to Choose the

Learn how to calculate the perfect cable tray size and dimensions for your electrical project. This guide covers load capacity, fill ratios, and industry

[Contact Us](#)

Cable Tray Dimensions Guide: Standard Sizes, Tray

Explore standard sizes by tray type, understand width and depth limits, and see how to calculate and choose compliant cable tray sizes for real projects.

[Contact Us](#)



PRODUCT BROCHURE T& B® Cable Tray Specialty aluminum solutions

For cable tray applications lacking sufficient space for the number of supports required for standard-length sections, choose T& B Cable Tray long-span AH1-8 series aluminum cable tray in 40-foot (12.2



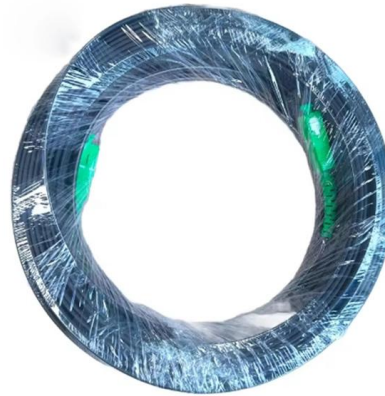
[Contact Us](#)



Aluminum Alloy Cable Tray is Lightweight to Install

Aluminum alloy cable trays have good strength, beautiful appearance, large carrying capacity. Also, they are designed into several patterns such as channel design,

[Contact Us](#)



12-SDMS-06

Cable tray straight sections, fitting side rails and rungs made from 6063-T6 aluminum extrusions shall be of heat-treated alloys for further strengthening and shall be copper free suitable for salt laden

[Contact Us](#)

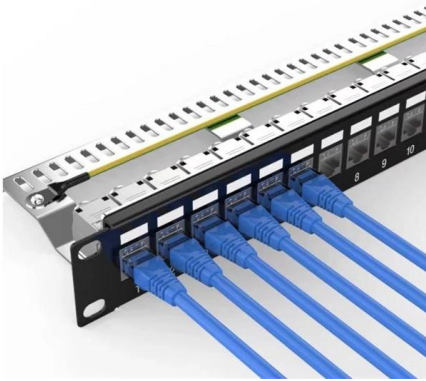


Types of Cable Trays - Advantages, Applications and Sizes

Explore the types of cable trays, their advantages, applications, and standard sizes. Learn how they improve cable management and support various industries.

[Contact Us](#)





Aluminum Cable Tray, Series 2, 3, 4 & 5

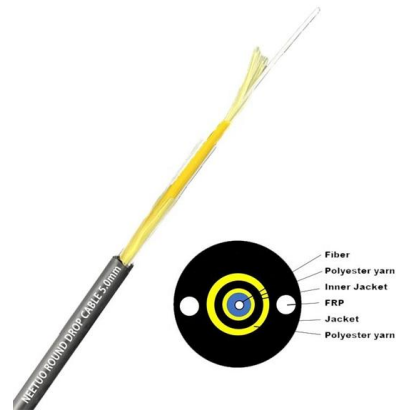
Aluminum Cable Tray, Series 2, 3, 4 & 5. o Side Rails. Our I-Beam - the most efficient structural shape . Using "Copper-free" 6063-T6 Aluminum Alloy o Rungs- provide system integrity . The rungs can

[Contact Us](#)

Cable Tray Technical Guide A practical guide to product selection and

A practical guide to product selection and installation This guide for engineers and installers has been developed by ABB as a practical reference regarding cable tray characteristics, installation, and

[Contact Us](#)



Aluminium Cable Trays , EAE Electric

The aluminum cable tray is a lightweight, durable, and cost-effective solution used for organizing and safely carrying electrical and data cables. With easy installation

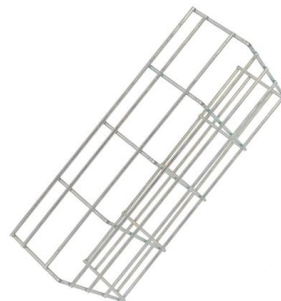
[Contact Us](#)



Data Centre Cable Trays: High-Density Cabling Guide

Learn about Data Centre Cable Trays for high-density cabling. Get a guide on design, materials, smart management, & future tech for data halls.

[Contact Us](#)



Aluminum Cable Tray Specifications , PDF ,



Mechanical

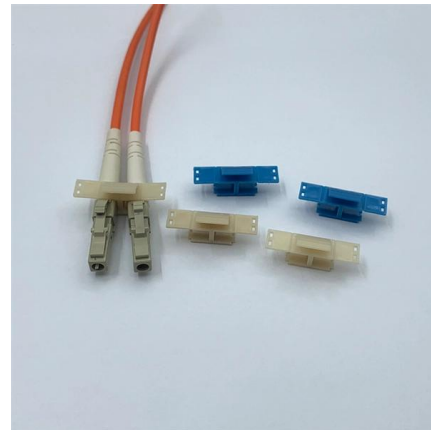
The document provides detailed specifications for aluminum cable trays, including features, accessories, material compliance, and load ratings. It outlines various

[Contact Us](#)

MGX Rack and Tray Specification 1.1

The MGX Accelerated Computing Rack and Trays Specification outlines the design and requirements for a modular rack and tray system tailored

[Contact Us](#)



Aluminum Cable Tray, Aluminum Ladder Cable Tray

Aluminum cable trays of NewReach are crafted from high-performance materials from durable aluminum alloys including 6063, robust steel Q235, corrosion

[Contact Us](#)

Aluminum Alloy Cable Tray for Corrosion-Resistant Systems

This article explores the design, benefits, installation practices, and real-world applications of aluminum alloy cable trays, providing actionable insights for your next project.

[Contact Us](#)





Aluminum Alloy Cable Tray for Corrosion-Resistant Systems

Discover aluminum alloy cable trays that are lightweight, corrosion-resistant, and optimize heat dissipation for safe, long-lasting cable management.

[Contact Us](#)

Section 17.pdf

2.1 Cable tray systems shall be of the design of one manufacturer and shall be designed so that there are no burrs, projections, or sharp edges to damage cable insulation.

[Contact Us](#)



PRODUCT BROCHURE T& B® Cable Tray Specialty aluminum solutions

All calculations and data are based on 36" wide cable trays with rungs spaced on 12" centers with tray supported as simple spans with deflection measured at the midpoint.

[Contact Us](#)

Cable Tray: Material Properties

In determining the proper aluminum alloy for structural applications such as a ventilated cable tray system, the design engineer should recognize the

[Contact Us](#)





Contact Us

For datasheets, pricing, or custom fiber access solutions, please visit:
<https://frindel.es>