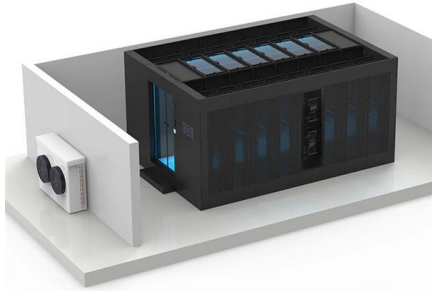


Dimensions of U-shaped steel cable trays for private power grids





Dimensions of U-shaped steel cable trays for private power grids



CABLE TRAY, CABLE LADDER, CABLE TRUNKING CATALOGUE

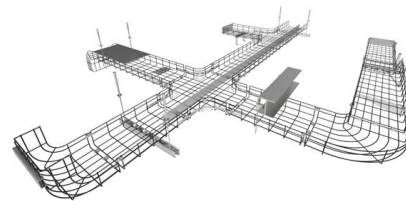
STANDARD DIMENSIONS: 100mm. Height (H): 50mm, 70mm, 100mm. Depth (D): 1.2mm, 1.5mm, 2.0mm. Material: Mild steel sheet / PO steel sheet. Constructed Type: MIG welding. Surface coating / Hot

[Contact Us](#)

CABLE TRAY

SFSP produces a variety of products ranging from cable management systems; cable trays, cable ladders, basket trays, trunkings and support systems, to mechanical cladding fixations, steel lintels

[Contact Us](#)



U-LI Steel Cable Tray Catalogue

The document describes United U-LI Steel Surface Cable Tray and Accessories. It provides details on the product range which includes perforated tray series for

[Contact Us](#)



Cable Tray Technical Guide A practical guide to product selection and

A practical guide to product selection and installation This guide for engineers and installers has been developed by ABB as a practical reference regarding cable tray characteristics, installation, and



Cable Tray Specifications and Sizes , PDF

The document describes specifications for different types of cable trays, including outside returned flanged cable trays in various standard sizes, light duty and

[Contact Us](#)



Wire Mesh Cable Trays , Welded Steel Cable Trays

Durable welded wire mesh cable trays for industrial, commercial, and AI data center cable management--flexible, scalable routing.

[Contact Us](#)



Characteristics of U steel cable tray

During expansion and subsequent cable laying construction, the "three-line" separation can be easily achieved. The installation dimensions of the cable tray can be flexibly designed and determined by

[Contact Us](#)



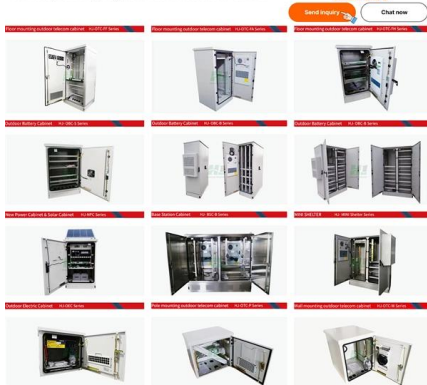
EUH Unperforated Heavy Duty Cable Trays

EUH Unperforated Heavy Duty Cable Trays Cable trays are systems used for the safe transportation and protection of electrical cables, designed to fit the pathways within buildings and structural

[Contact Us](#)



Powerful manufacturers - 20+ years of experience - Support customization
For more product types, please contact customer service>>>



Cable Tray Dimensions Guide: Standard Sizes, Tray

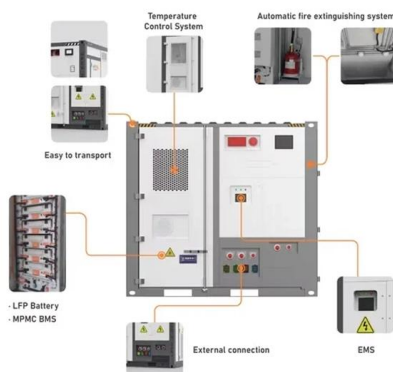
Explore standard sizes by tray type, understand width and depth limits, and see how to calculate and choose compliant cable tray sizes for real projects.

[Contact Us](#)

Cable Tray Systems

Durable and reliable cable tray systems providing premium performance in commercial and industrial applications, available in a variety of materials to suit your needs.

[Contact Us](#)



26 05 36 Cable Trays for Electrical Systems

Description: This product category covers metal cable trays and metal cable tray systems intended for field assembly and for use in accordance with Article 392 of NFPA 70.

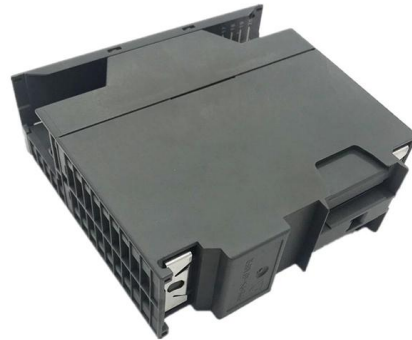
[Contact Us](#)



Technical Data Sheet Cable Tray System

Each Cable Tray System includes a range of factory manufactured bends, tees, reducers etc. that are unique to the sizes and ranges that incorporate fast fix integral couplers for a better fit and quicker

[Contact Us](#)



B-Line series Cable Tray Design Considerations

As an industry leader in cable tray, Eaton offers one of the widest ranges of cable management solutions available in the market today with its B-Line series portfolio. With unmatched quality and service, we

[Contact Us](#)

TECHNICAL AND SIZING DATA

Even though a 900 mm wide tray has six (6) times the volume of a 150 mm wide tray, it cannot carry any more cable weight. When piling cable in tray, the required air separation between cables can be

[Contact Us](#)



Cable Tray Types and Sizes

What is Cable Tray Systems? An electrical cable tray is a type of containment system used to support insulated electrical cables for power distribution, control,

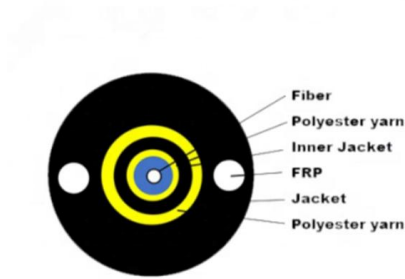
[Contact Us](#)



Cable Tray Size Chart and Selection Guide

The range of available electrical cable tray dimensions in steel is extensive, from small 50-millimeter-wide trays suitable for control wiring to massive 1000-millimeter-wide systems designed

[Contact Us](#)



Ampacity of Power Cables Installed in Cable Trays

The most common method of installing power cables in tunnels is mounting them on metal brackets or cable trays attached to the sides. Cable trays offer numerous

[Contact Us](#)



LEGRAND CABLE TRAYS TECHNICAL GUIDE

Specifies requirements for metal cable trays and associated fittings designed for use in accordance with the rules of Canadian Electrical Code, Part I and the National Electrical Code®

[Contact Us](#)



IEC Standard for Cable Tray: Complete Technical Guide

Table of Contents IEC Standard for Cable Tray: Complete Technical Guide The International Electrotechnical Commission (IEC) provides detailed

[Contact Us](#)





Characteristics of U steel cable tray

The perforated U steel cable tray is a specialized product developed for the computer rooms and stations of telecommunications operators such as China Telecom, China Mobile, China Unicom,

[Contact Us](#)



12-SDMS-06

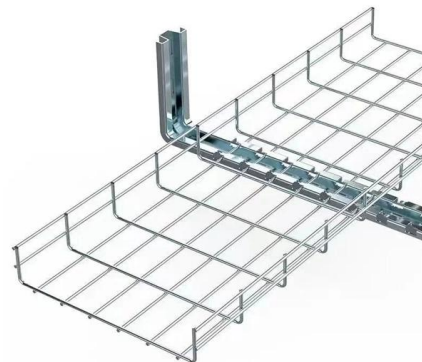
Carbon steel cable trays intended for installation in corrosive or highly corrosive environments with severe alkaline and acidic conditions shall be hot-dip galvanized zinc after fabrication.

[Contact Us](#)

CABLE TRAYS GENERAL INFORMATION AND

Cable tray systems are to be installed so they are accessible. If possible 300mm minimum should be left above or between installed systems to allow for cable

[Contact Us](#)



cable tray technical specifications

Armorduct cable tray systems are usually assembled using M6 roofing bolts particularly for couplers, fishplates and connection to supporting framework. It should be noted that independent testing has

[Contact Us](#)



Contact Us

For datasheets, pricing, or custom fiber access solutions, please visit:
<https://frindel.es>