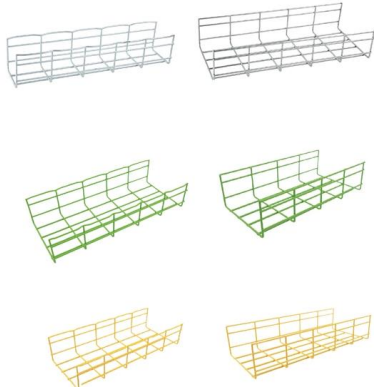


Dimensions of Finished Cable Tray Tees





Dimensions of Finished Cable Tray Tees



Cable Tray Technical Guide A practical guide to product selection and

A practical guide to product selection and installation This guide for engineers and installers has been developed by ABB as a practical reference regarding cable tray characteristics, installation, and

[Contact Us](#)

26 05 36 Cable Trays for Electrical Systems

Install cable tray as a complete system, including fasteners, hold-down clips, support systems, barrier strips, adjustable horizontal and vertical splice plates, elbows, reducers, tees, crosses, cable

[Contact Us](#)



Cable Tray Overview

Cable Tray Range Tamlex cable tray is available in three types, 10 mm straight edge light duty, 25 mm return flange medium duty and 50 mm heavy duty from 50 mm

[Contact Us](#)



CABLE TRAY SYSTEMS GUIDE

Material: Side Rails: Fitting side rails are I-beams with overall dimensions similar to straight tray sections. Rungs and Bottoms: Rung and Bottom designs are identical to similar straight cable tray



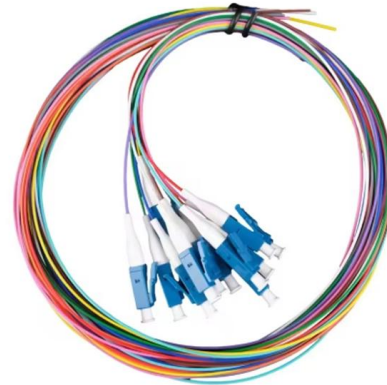
Assembly Guide

Assembly Guide The bends, tees, crosses, risers and reducers of wire mesh cable tray can be easily and quickly made live at the project by using a bolt cutter. Since the jaws of the bolt cutter drags a

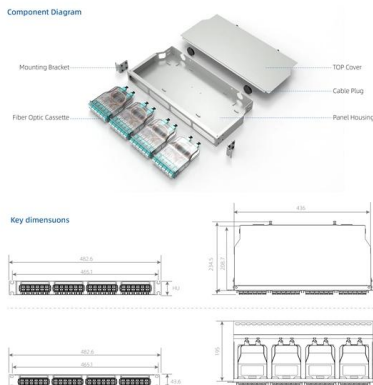
[Contact Us](#)

CABLE TRAY

Prior to installing cable in the cable tray, examine cable paths to ensure all areas are free of debris that may interfere with the cable's installation. The cable tray should never be used as a walkway.



[Contact Us](#)



Standard Cable Tray Types and Fittings

The Basic Std Cable Tray System, Fittings & Accessories - Free download as PDF File (.pdf), Text File (.txt) or read online for free. This document describes the

[Contact Us](#)



Cable Tray and Trunking Overview , PDF , Length

Cable Tray - Free download as PDF File (.pdf), Text File (.txt) or read online for free. The document discusses different types of cable containment systems including

[Contact Us](#)



Wire Mesh Cable Trays Technical Information Detailed,

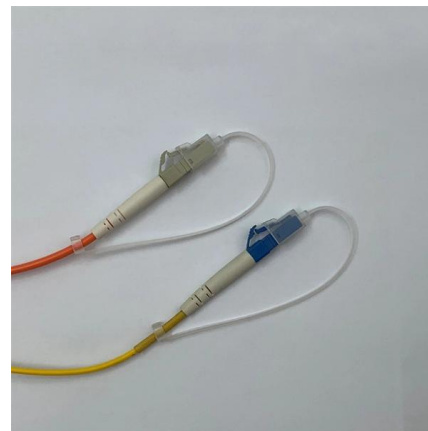
Wire Mesh Cable Tray Detailed Information: a. A job site, field adaptable support system primarily for low voltage telecommunication and fiber optic cables. These

[Contact Us](#)

Cable tray manual

Nearly every aspect of cable tray design and installation has been explored for the use of the reader. If a topic has not been covered sufficiently to answer a specific question or if additional information is

[Contact Us](#)



CABLE TRAY SYSTEMS GUIDE

The design and cost of the cable tray is greatly affected by this designation. In order to determine the most appropriate and economical system, a class should be selected that reflects the actual total

[Contact Us](#)





Cable Tray

Cable Ladders Straight sections of ladder type cable trays consist of two longitudinal side rails, connected by individual transverse members, or rungs, which are welded to the side rails or bolted in

[Contact Us](#)



Section 16135

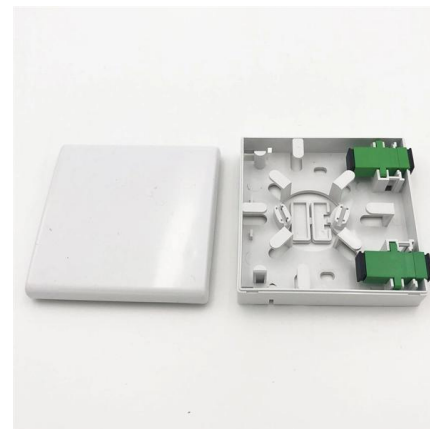
Wire basket cable tray systems are defined to include, but are not limited to straight sections of continuous wire mesh, field formed horizontal and vertical bends, tees, drop outs, supports and

[Contact Us](#)

Cable Crossovers & Tees For Cable Trays , Metsec

We offer a range of cable crossovers and tees, available in both equal and unequal measures, for light, medium, and heavy duty cable tray systems in widths of

[Contact Us](#)



Cable Tray Dimensions Guide: Standard Sizes, Tray

Standard Cable Tray Dimensions Cable tray dimensions are not chosen at random. Across most global markets, they follow well-established

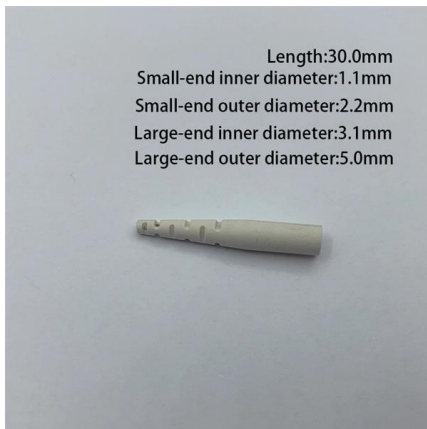
[Contact Us](#)



Cable Tray Dimensions Guide: Standard Sizes, Tray

Explore standard sizes by tray type, understand width and depth limits, and see how to calculate and choose compliant cable tray sizes for real projects.

[Contact Us](#)



Cable Tray Size Chart and Selection Guide

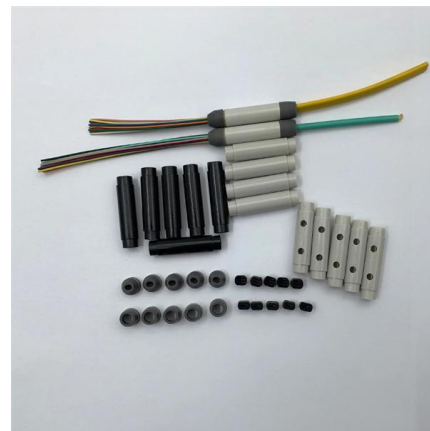
Selecting the appropriate electrical cable tray dimensions is a critical decision that directly impacts the safety, efficiency, and longevity of any industrial or commercial electrical installation.

[Contact Us](#)

CABLE TRAY, CABLE LADDER, CABLE TRUNKING CATALOGUE

STANDARD DIMENSIONS: Length (L): 2500mm, 3000mm. 00mm. Height (H): 50mm, 70mm, 100mm. Depth (D): 1.2mm, 1.5mm, 2.0mm.

[Contact Us](#)



Cable Tray Design and Components Guide

Tables list standard sizes and specifications for straight and bent cable trays, including width, height, thickness, materials, and finishes. Drawings show

[Contact Us](#)



CABLE TRAY, CABLE LADDER, CABLE TRUNKING CATALOGUE

Cable Trunking. Straight sections of solid bottom cable trays constructed from single sheet of metal, providing excellent protection from external damage, they are used primarily for intrumental control,

[Contact Us](#)



GUIDE CABLE TRAYS TECHNICAL

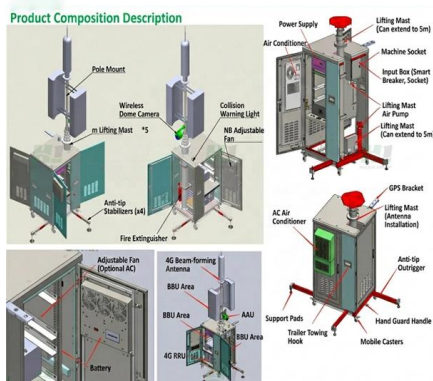
In accordance with its continuous improvement policy, Legrand reserves the right to change the specifications and illustrations without notice. All illustrations, descriptions and technical information

[Contact Us](#)

Cable Tray Design and Standards Guide

1. The document outlines codes and standards that must be followed for design and construction of cable trays and their components. Standards listed include those

[Contact Us](#)



Channel tray

T& B channel tray systems are fabricated from a corrosion-resistant metal (low-carbon steel, stainless steel or an aluminum alloy) or from a metal with a corrosion-resistant finish (zinc or epoxy). The

[Contact Us](#)



Unlocking the Secret: Exact Electrical Cable Tray Dimensions for

Discover essential electrical cable tray dimensions, including standard sizes, materials, and proper installation guidelines. Learn how to select the right cable tray for your project with this

[Contact Us](#)



50km/spool



Cable Tray Technical Guide A practical guide to product selection and

In designing supports for a cable tray system, consideration should be given to the loads associated with future cable additions and any additional loading that may be applied to the cable tray system (e.g.,

[Contact Us](#)

Cable Tray Size and Dimensions: How to Choose the

Learn how to calculate the perfect cable tray size and dimensions for your electrical project. This guide covers load capacity, fill ratios, and industry

[Contact Us](#)



B-Line series Cable Tray Design Considerations

Our wind certification report provides you with list of acceptable B-Line series cable tray supports, fittings and covers based off of the environmental conditions, cable loading, and type of cable tray in your

[Contact Us](#)



Contact Us

For datasheets, pricing, or custom fiber access solutions, please visit:
<https://frindel.es>