

# **Dimensions for fabricating right-angle bends in cable trays**





## Dimensions for fabricating right-angle bends in cable trays

### Pre-Terminated Patch Panel

- Standard 19" width
- Max 144 fibers in 1U
- MPO/Fusion Dual-Purpose



Removable Cable Management Tray



Transparent Front Cover



High-Quality Matte Coated Steel

### Cable Tray Bend , Information by Electrical Professionals for

For example, if we have to make a field bend for a 12" (300mm) metallic ladder tray using straight sections of this tray, then how much should be the minimum radius of this field bend?

[Contact Us](#)

### How to construct a flat 90° bend for Cable Trays

How to construct a flat 90° bend for Cable Trays December 9, 2024 The first step is to mark out the tray (A). Construction of a flat 90° bend (A) The

[Contact Us](#)



### Cable trays manufacturers, Perforated type Cable

Cable trays and bends Fixotech Engineering Systems Pvt Ltd., An ISO 9001-2008 Certified Company, engaged into manufacturing of Cable Management Systems

[Contact Us](#)

### Moti Group Sheet Metal Fabrication Company India , Electrical Switch

AR CABLE TRAY NUMBERING SYSTEM For ease of identifying the products a numbering system has been developed. Each code and character's ic of numbering system is explained below.

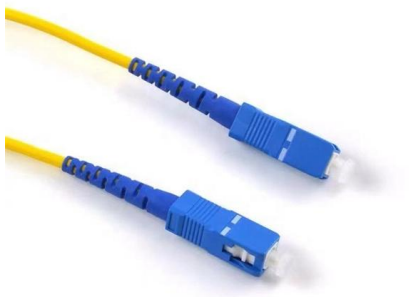
STRAIGHT



### CABLE TRAY SYSTEMS GUIDE

The Ladder Tray features light, rugged, tubular steel construction. It is designed for mechanical support and strain relief in long runs of cable and creates a smooth gradual bend for cable. Rail and stringer

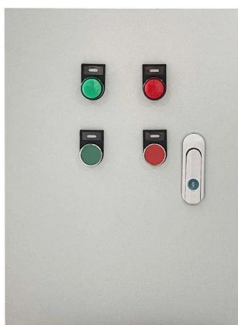
[Contact Us](#)



### TYPICAL DETAILS OF CABLE TRAYS AND ACCESSORIES

5. THE DIMENSIONS OF ALL BENDS, TEES, CROSSES, ETC. FOR PERFORATED CABLE TRAYS SHALL BE THE SAME AS FOR LADDER TYPE TRAY FITTINGS. 6. SIDE CHANNELS OF

[Contact Us](#)



### Channel tray

Fittings are used to change the size or direction of the channel tray. The most important decision to be made in fitting design concerns radius. The radius of the bend, whether horizontal or vertical, can be

[Contact Us](#)



## How to Bend Cable Tray Students trading aid on how best to

This is a step by set guide on how to make (fabricate) a 90 degree bend in metal cable tray and use a cable tray bending machine to make the same bend. Videos are training aids for City and Guilds (C and G) and EAL courses

[Contact Us](#)



## Cable Tray Bend Calculator

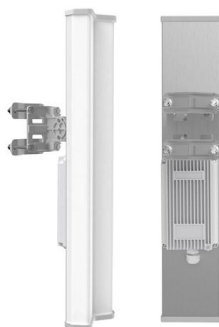
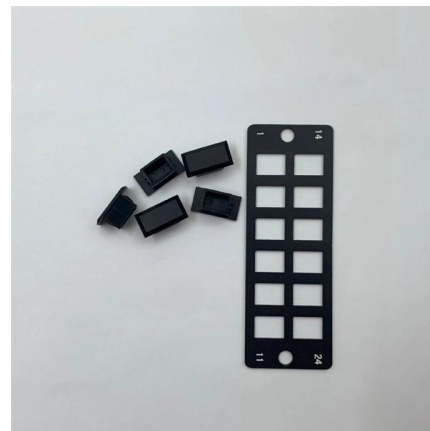
Calculate the minimum required bend radius by multiplying the cable's outside diameter by its bending factor (e.g., 10x for multicore). Then, select a standard tray fitting (300mm, 450mm, etc.) that

[Contact Us](#)

## How to construct a flat 90° bend for Cable Trays

Construction of a flat 90° bend (G) The gusset is produced by cutting a piece of tray to the required size, removing 1 lip completely and bolting it to the

[Contact Us](#)



## Cable Tray Offset Calculator , Vertical, Horizontal & Compound Offset

Calculate horizontal, vertical, or compound cable tray offsets based on bend angle, offset distance, and available installation space. Use this tool to estimate sloped section length, horizontal run

[Contact Us](#)



**CABLE TRAY**

Prior to installing cable in the cable tray, examine cable paths to ensure all areas are free of debris that may interfere with the cable's installation. The cable tray should never be used as a walkway.

[Contact Us](#)



**Method for Fabricating 90-Degree Bend Elbows for Cable Tray**

Making bent elbows for cable trays according to the formulas provided in the diagram is for reference only. The data is directly related to the width or height of the cable tray, and calculations can be

[Contact Us](#)

**Cable Tray Bends**

Heavy Duty 90 Degree Flat Bend 100mm £ 27.76 ex. VAT - £ 33.31 inc. VAT Heavy Duty 90 Degree Flat Bend 100mm Galvanised £ 34.66 ex. VAT - £ 41.59 inc. VAT

[Contact Us](#)



**B-Line series Cable Tray Design Considerations**

Is your cable tray system optimized for safety, dependability, space and cost savings? Cable tray (or cable ladder) systems are a popular alternative to electrical conduit systems, as they have an

[Contact Us](#)



## Angular Ladder Type Cable Trays (ALTCT) , Patny Systems

Patny Systems offers a wide range of Angular Ladder Type Cable Trays that are lightweight, durable, and easy to install. Contact us today for a quote!

[Contact Us](#)



## Cable Tray Bend and Offset Formulas

The document discusses Metstrut cable tray systems, including their configuration, materials, dimensions, and compliance with industry standards. Key points: -

[Contact Us](#)

## GUIDE CABLE TRAYS TECHNICAL

NEMA VE 1-2017 Specifies requirements for metal cable trays and associated fittings designed for use in accordance with the rules of Canadian Electrical Code, Part I and the National Electrical Code®

[Contact Us](#)



## TYPICAL DETAILS OF CABLE TRAYS AND ACCESSORIES

FOR SPECIFIC SITE REQUIREMENTS (E.G. IRREGULAR ANGLE BENDS SUCH AS 30°/60' BENDS, ETC) AS PER SITE LAYOUT CONDITIONS, TRAY ACCESSORIES SHALL BE FABRICATED AT

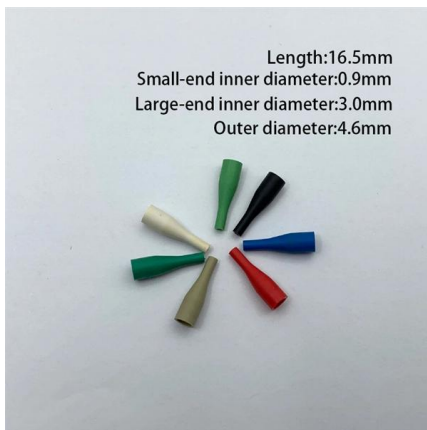
[Contact Us](#)



## Best Practice Guide to Cable Ladder and Cable Tray Systems

This guide covers cable ladder systems, cable tray systems, channel support systems and associated supports intended for the support and accommodation of cables and possibly other electrical

[Contact Us](#)



## Cable Tray Installation Guidelines , PDF , Galvanization

This document provides details on installing cable trays and their support systems. It includes diagrams showing how to mount cable trays on walls using pre

[Contact Us](#)

## Wire Mesh Cable Trays Technical Information Detailed,

Wire Mesh Cable Tray Installation Notice: Bends, Risers, T Junctions, Crosses and Reducers can be made from wire mesh cable tray straight sections flexibly in



[Contact Us](#)

## Contact Us

---

For datasheets, pricing, or custom fiber access solutions, please visit:  
<https://frindel.es>