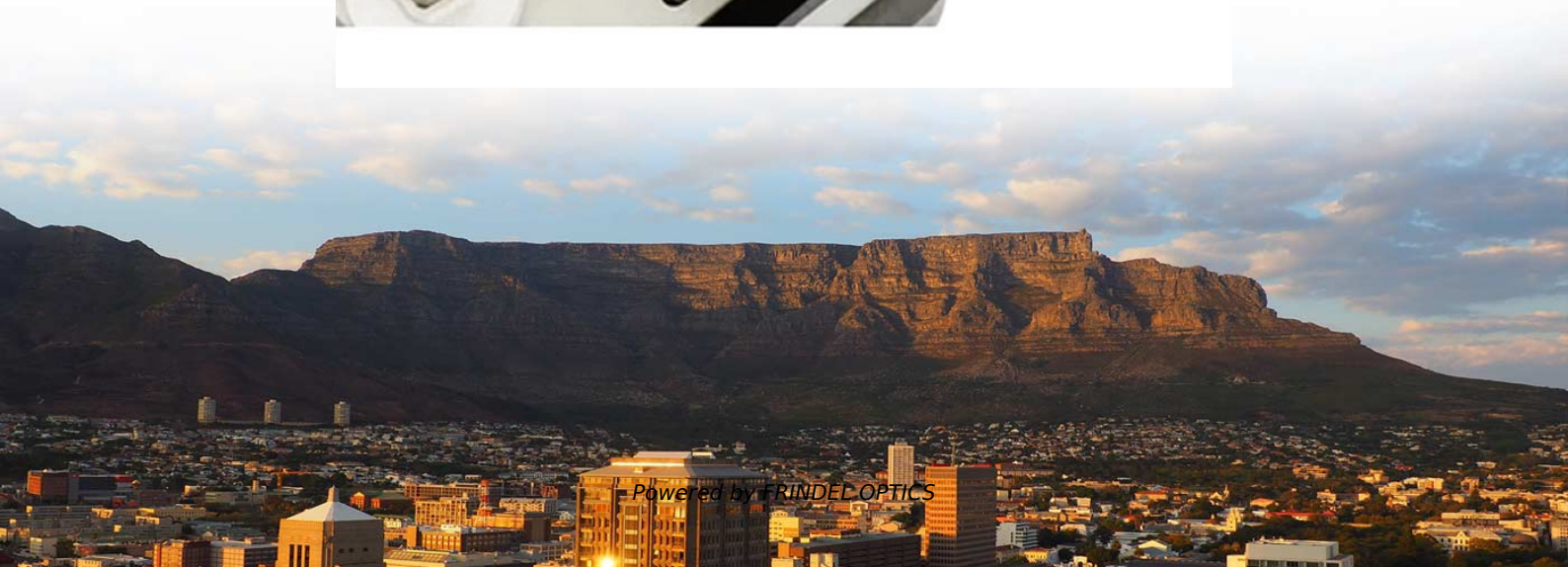
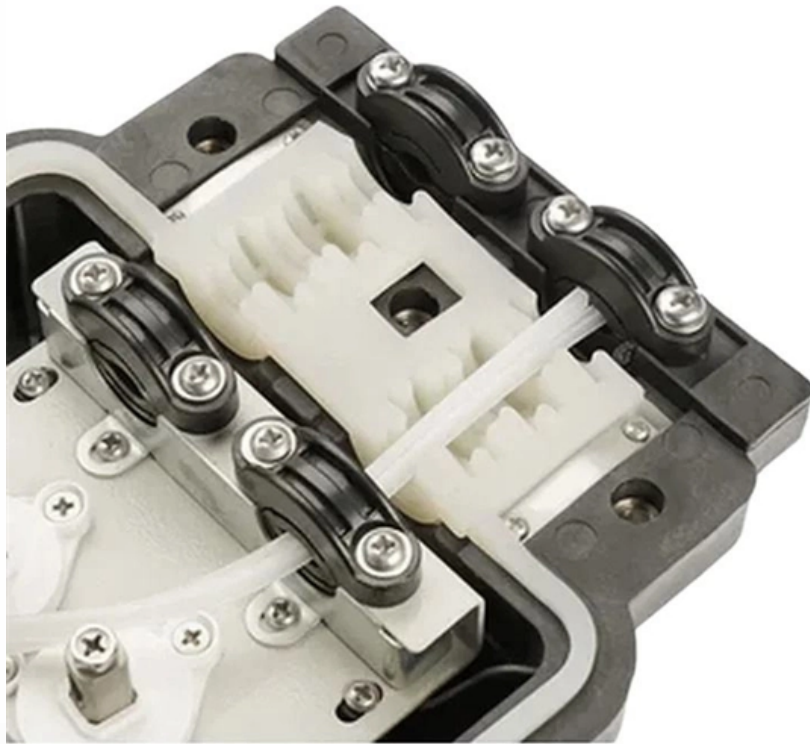


Dimensional parameters of mesh cable trays for power systems





Dimensional parameters of mesh cable trays for power systems



Cable Tray Technical Guide A practical guide to product selection and

In designing supports for a cable tray system, consideration should be given to the loads associated with future cable additions and any additional loading that may be applied to the cable tray system (e.g.,

[Contact Us](#)

Wire Mesh Cable Trays Technical Information Detailed,

Trays shall be supported at a maximum span of 2.5m by trapeze, wall, floor or channel mounting methods and will not exceed maximum loads as specified by

[Contact Us](#)



Cable Tray SHIB NAL

Cable trays are not raceways, but they are treated as a structural component of a facility's electrical system. Cable trays are a part of a planned cable management system to support, route, protect and

[Contact Us](#)



Cable Tray: Ladder, Wire Mesh, Cable Management

Cable tray systems enable organized cable management and power distribution, supporting ladder and perforated trays, wire mesh raceways, grounding, NEC



Cable Tray Technical Guide A practical guide to product selection and

A practical guide to product selection and installation This guide for engineers and installers has been developed by ABB as a practical reference regarding cable tray characteristics, installation, and

[Contact Us](#)

Appendix 3F Cable Trays and Cable Tray Supports

The cable tray test program conducted by ANCO Engineers Inc. included more than 2000 dynamic tests of representative cable tray system design and construction. The test configurations included items



[Contact Us](#)



Section 16135

Indicate wire basket cable tray dimensions, support points, and finishes. Product Data: Submit manufacturer's data on wire basket cable tray system including, but not limited to, types, materials,

[Contact Us](#)



IEC Standard for Cable Tray: Complete Technical Guide

The International Electrotechnical Commission (IEC) provides detailed guidelines for cable tray systems under IEC 61537. This standard outlines the

[Contact Us](#)



Cable Tray Size and Dimensions: How to Choose the

Learn how to calculate the perfect cable tray size and dimensions for your electrical project. This guide covers load capacity, fill ratios, and industry

[Contact Us](#)

Calculating Suitable Size of Cable Tray

Cable trays are essential components in electrical installations, providing a safe and organized way to route and support electrical cables. The suitable size of a cable tray is crucial for

[Contact Us](#)



Cable Tray Size Calculation for Project Engineers

Cable tray size calculation is important for ensuring safe cable installation, proper heat dissipation, and enough spare capacity for future

[Contact Us](#)



Standard Wire Mesh Cable Tray

Welded Wire mesh system makes securing tray effortless with no screws or clamps needed for connections. Wire mesh cable tray has engineered tray interlocks to

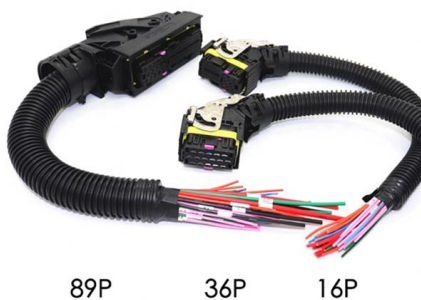
[Contact Us](#)



WIRE MESH TRAY TECHNICAL GUIDE

This depends on the type of data cable, the number of power cables and the type of cable tray. Otherwise, the distance of 8" provides a simple and sensible rule of thumb.

[Contact Us](#)



Cable Tray Dimensions Guide: Standard Sizes, Tray

Explore standard sizes by tray type, understand width and depth limits, and see how to calculate and choose compliant cable tray sizes for real projects.

[Contact Us](#)



Mesh cable tray systems

od ventilation. They can be used universally. The mesh cable trays are suitable for the installation of power cable. and cables in various areas of application. The grid widths allow cables to b. easily fed

[Contact Us](#)





Westinghouse AP1000 Design Control Document Rev. 19

The AP1000 cable tray system design requires no sprayed-on material for fire protection. Cable ties are provided at spacing greater than 4 feet, thereby permitting cable movement within the trays.

[Contact Us](#)



Cable Tray Width, Dimensions and Specifications as per

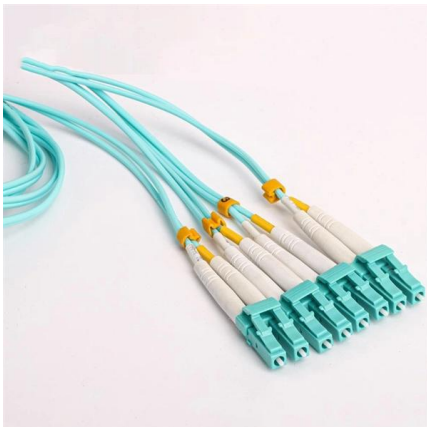
Learn about cable tray width dimensions and specifications as per NEC standards. Understand types, sizes, materials, and installation guidelines for safe and

[Contact Us](#)

Wire Mesh Cable Trays for IT & Data Centers: The

Ultimate Guide By madewithless / August 23, 2025 Introduction In the heart of every modern IT

[Contact Us](#)



GUIDE CABLE TRAYS TECHNICAL

In accordance with its continuous improvement policy, Legrand reserves the right to change the specifications and illustrations without notice. All illustrations, descriptions and technical information

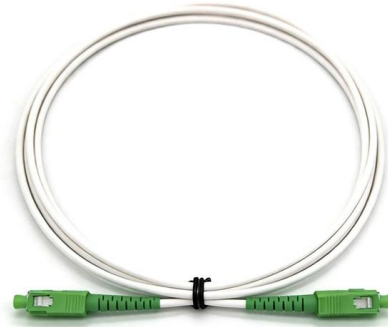
[Contact Us](#)



Cable Tray Size Chart and Selection Guide

Selecting the appropriate electrical cable tray dimensions is a critical decision that directly impacts the safety, efficiency, and longevity of any industrial or commercial electrical installation.

[Contact Us](#)



What are Cable Trays & Different Types of Cable Trays

For managing large cable networks, you need a reliable organizational system to ensure that the power supply stays operational. One of

[Contact Us](#)



WIRE MESH CABLE TRAYS - Demka Electrical Suppliers

Wire mesh cable trays are made by compounding wire cable conduits with horizontal wires running vertically every 100 mm and vertical wires running horizontally every 50 mm.

[Contact Us](#)



Cable Tray Sizing & Load Calculations Made Simple

Step 2: Choose Tray Type and Width For heavy power cables or long spans, ladder trays typically perform best. For mixed small cables, perforated works well. Width is set by total cable area

[Contact Us](#)



CABLE TRAY SYSTEMS GUIDE

Steel Ladder System Hubbell's NEXTFRAME® Ladder Tray is the effective and widely used cable runway that supports and delivers bundles of cable between cabinets, racks, and closets, along

[Contact Us](#)



DETERMINING THE SUITABLE TRAY SIZE

The second parameter is represented by the effective mesh tray cross-section. Utilisable mesh tray cross-section The utilisable mesh tray section is a value defining the sum of the sections of all cables

[Contact Us](#)

Contact Us

For datasheets, pricing, or custom fiber access solutions, please visit:
<https://frindel.es>