

Difference in distance between double-layer cable trays





Overview

When installing two cable trays in parallel at the same height, the distance between them should be no less than 0. This spacing is crucial for adequate maintenance access, ease of inspection, and ensuring proper airflow for effective heat dissipation. All illustrations, descriptions and technical information included in this document are provided as indications and can cable trays are equivalent. The mechanical and electrical characteristics, tests, certifications, overall quality management, recommendations mentioned. maintain spacing or to keep cables in place when the tray is ect the minimum bend ra-dius for cables as they exit the bottom of the cable tray.



Difference in distance between double-layer cable trays



Precautions for Cable Tray Installation

When two sets of cable trays are installed on the same beam, the net distance between the two sets of cable trays should not be less than 50 mm. When multi

[Contact Us](#)

Types of Cable Trays - Advantages, Applications and Sizes

Explore the types of cable trays, their advantages, applications, and standard sizes. Learn how they improve cable management and support various industries.

[Contact Us](#)



Typical Design Philosophy of Cable Trays for Power

The trays shall be strong enough to keep the deflection of the fully loaded tray within permissible limits. In general, cable trays run in parallel to building walls and

[Contact Us](#)



Distance between Cable Trays

#2 "Re: Distance between Cable Trays" by North of 60 on 06/12/2008 12:32 PM (score 1) Copy to Clipboard Users who posted comments: Anonymous Poster (1); jobinjosin (2);

[Contact Us](#)



Safety Distances Between Cable Trays and Pipes

Learn about the importance of cable trays and pipes safety distances in ensuring system reliability. Explore standards,

[Contact Us](#)



Cable Pathways: A Data Center Design Guide and Best

An underfloor cable tray is a product used primarily in data centers. The concept is the same as the overhead support apparatus. However, when using

[Contact Us](#)



Understanding the Differences Between Cable Trays

Understanding the Differences Between Cable Trays and Cable Ladders Discover "Understanding the Differences Between Cable Trays and Cable Ladders," a

[Contact Us](#)





Guide to cable support systems

The mesh cable trays are suitable for the installation of power cables and cables in various areas of application. The grid spacings mean that cables can be inserted and run out in various directions.

[Contact Us](#)



Best practice guide to cable ladder and cable tray

Cable ladder and cable tray systems The following recommendations are intended to be a practical guide to ensure the safe and proper installation of

[Contact Us](#)

Cable Tray Segregation and Clearance Rules

This document discusses cable segregation rules for different cable management systems. It provides guidelines for minimum separation distances between cable

[Contact Us](#)



Cable Tray Spacing Standards for Installation and Safety

Discover the essential cable tray spacing requirements for safe and efficient installation. Learn key standards, horizontal and vertical spacing, and more.

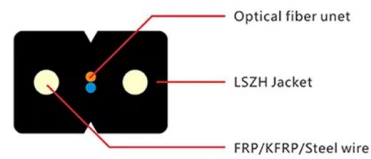
[Contact Us](#)



Safety Distance Between Cable Trays: What You Need

Learn the right safety distance between cable trays and ventilation or drainage systems. Follow these expert guidelines to ensure proper function and

[Contact Us](#)



Best Practice Guide to Cable Ladder and Cable Tray Systems

This guide covers cable ladder systems, cable tray systems, channel support systems and associated supports intended for the support and accommodation of cables and possibly other electrical

[Contact Us](#)

GUIDE CABLE TRAYS TECHNICAL

Galvanic corrosion results from an electrochemical phenomenon due to the potential difference existing between different metals, or between a metal and the impurities it contains when they are electrically

[Contact Us](#)



A Guide to Installing and Supporting Electrical Cable Trays

A professional guide to installing electrical cable tray systems per NEC Article 392. Covers support, securing cables, and fill calculations.

[Contact Us](#)



Cable Tray Segregation and Clearance Rules

Cable Tray clearances as per Shell DEP - Free download as PDF File (.pdf), Text File (.txt) or read online for free. This document discusses cable segregation rules

[Contact Us](#)



Tie Down Practices for Multiconductor Cables in Cable Trays , Cable

The NEC doesn't specify any distances between ties for cables in cable tray wiring systems. This is a decision that must be made by those designing and installing the cable tray wiring systems. It is

[Contact Us](#)

Core Principles for Electrical and Instrumentation Cable

2. Minimum Spacing and Segregation Spacing Standards: Electrical (power) and instrumentation (signal/control) cable trays should maintain a minimum vertical

[Contact Us](#)



IEC60364-5-52 Cable Ladder Reduction Factor Spacing , Eng-Tips

According to DIN VDE 0298/ part 2 "Application of cables and flexible wires in power installations. Recommended values for current-carrying capacity of cables for fixed installations with

[Contact Us](#)





910533-3_EN

Cable support systems are generally designed with at least 50 % reserve space available for each tray. Cable tray types, supports (types and spacing) and securing systems are selected and designed

[Contact Us](#)



Cable Tray Support Spacing: Key Guidelines Explained

Explore the essential cable tray support spacing requirements for safe and efficient installations. Learn NEC guidelines for perforated, ladder, and wire

[Contact Us](#)

Cable Tray Width Selection for Installations with 600 Volt Single

Section 318-11(b)(3) states that where single conductors are installed in a single layer in uncovered cable trays, with a maintained space of not less than one cable diameter between individual conductors,

[Contact Us](#)



B-Line series Cable Tray Design Considerations

For ladder or ventilated trough trays, the total sum of the cross-sectional areas of all the cables to be installed in the cable tray must be equal to or less than the allowable cable area for the tray width, as

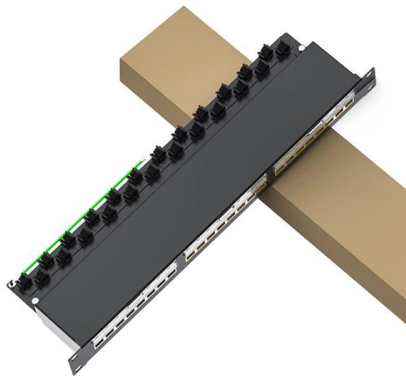
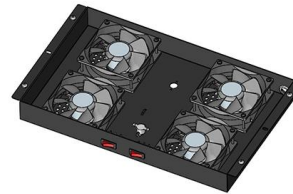
[Contact Us](#)



Cable tray installation requirements-ZM Technology Co., Ltd.

As a supporting project of the wiring project, the cable tray has no special normative guidance, and the specifications and forms of various manufacturers lack universality.

[Contact Us](#)



Best Practice Guide to Cable Ladder and Cable Tray Systems

The radius for cable ladder and cable tray fittings is usually determined by the bending radius and stiffness of the cables installed on the cable ladder or cable tray.

[Contact Us](#)

Cable Tray Technical Guide A practical guide to product selection and

Cable tray length is selected based on the load to be supported, the distance between the supports (also referred to as the span), and handling and installation constraints.

[Contact Us](#)



SC connector  X 12

Annex I

If cables of different families have to follow the same route, they should be placed in different cable trays³ (this solution is preferable to using the same cable tray equipped with dividers).

[Contact Us](#)



Cable Tray Size Calculation for Project Engineers

In a trefoil configuration, the distance between three single-core cables is double that of other trefoil cables. After determining the initial cable tray

[Contact Us](#)



Contact Us

For datasheets, pricing, or custom fiber access solutions, please visit:
<https://frindel.es>