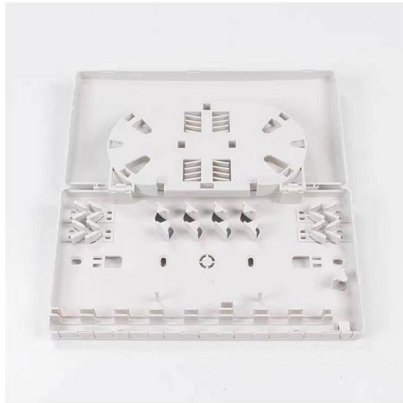


Detailed dimensions of aluminum alloy cable trays





Detailed dimensions of aluminum alloy cable trays



Aluminium Cable Trays , EAE Electric

Aluminum Cable Trays & Ladders deliver lightweight, durable solutions. Aluminum Cable Tray manages cables, while Aluminum Cable Ladder carries heavy loads.

[Contact Us](#)

Cable Tray Technical Guide A practical guide to product selection and

A practical guide to product selection and installation This guide for engineers and installers has been developed by ABB as a practical reference regarding cable tray characteristics, installation, and

[Contact Us](#)



TECHNICAL AND SIZING DATA

Even though a 900 mm wide tray has six (6) times the volume of a 150 mm wide tray, it cannot carry any more cable weight. When piling cable in tray, the required air separation between cables can be

[Contact Us](#)

Aluminum Cable Tray

Aluminum cable tray with high corrosive resistance performance and durable life is widely used in the corrosive and harsh environments.

[Contact Us](#)



Aluminum Cable Tray , EAE USA

E-Line KCA AL extra heavy duty aluminum cable ladder made from 6063-T6 marine-grade alloy. I-beam design with spans up to 20ft. DEKRA tested to NEMA VE-1 & IEC 61537. Perfect for offshore, oil &

[Contact Us](#)



Aluminum Alloy Cable Tray Sizes Explained: Key Specifications,

Each cable tray model is constructed from carefully selected aluminum alloys--such as AA3003, AA6061, AA8006, and others--that enhance performance characteristics like UV resistance, non

[Contact Us](#)

LEGRAND CABLE TRAYS TECHNICAL GUIDE

In accordance with its continuous improve-ment policy, Legrand reserves the right to change the specifications and illustrations without notice. All illustrations, descrip-tions and technical information

[Contact Us](#)



Cable Tray Dimensions Guide: Standard Sizes, Tray

Explore standard sizes by tray type, understand width and depth limits, and see how to calculate and choose compliant cable tray sizes for real projects.

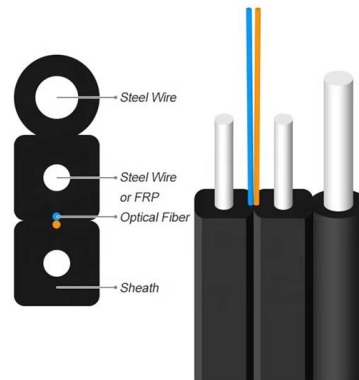
[Contact Us](#)



Aluminum Alloy Cable Tray for Corrosion-Resistant Systems

This article explores the design, benefits, installation practices, and real-world applications of aluminum alloy cable trays, providing actionable insights for your next project.

[Contact Us](#)



S00004107-56a-aluminum-straight-section-56-standard-rung-ladder

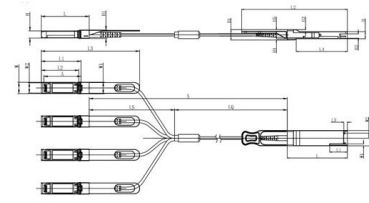
*TO DETERMINE DEFLECTION, MULTIPLY THE ANTICIPATED LOAD (lbs/ft or kg/m) BY THE DEFLECTION MULTIPLIER. RESULTS WILL BE IN INCHES OR MILLIMETERS.

[Contact Us](#)

GUIDE CABLE TRAYS TECHNICAL

NEMA VE 1-2017 Specifies requirements for metal cable trays and associated fittings designed for use in accordance with the rules of Canadian Electrical Code, Part I and the National Electrical Code®

[Contact Us](#)



Unit mm

| OSFP28 | L | L1 | L2 | L3 | L4 | W | W1 | W2 | H | H1 | H2 | H3 | H4 | H5 | H6 |
|--------|------|------|------|------|-------|-------|-----|-----|------|------|------|-----|-----|------|----|
| Max | 72.2 | - | 328 | 4.35 | 61.4 | 18.45 | - | 6.2 | 8.6 | 12.4 | 5.35 | 2.5 | 1.6 | 2.0 | - |
| Type | 72.0 | - | 4.20 | 61.2 | 18.35 | - | - | 8.5 | 12.2 | 5.2 | 2.3 | 1.5 | 1.8 | 6.35 | - |
| Min | 68.8 | 16.5 | 324 | 4.05 | 61.0 | 18.25 | 2.2 | 5.8 | 8.4 | 12.0 | 5.05 | 2.1 | 1.3 | 1.6 | - |

| SFP28 | L | L1 | L2 | L3 | W | W1 | W2 | H | H1 | A |
|-------|------|------|-------|-------|-------|------|------|-----|------|-------|
| Max | 57.6 | 47.7 | 44.55 | 119.9 | 13.8 | 14.0 | 12.3 | 8.7 | 10.3 | 45.25 |
| Type | 57.4 | 47.5 | 44.35 | 117.9 | 13.55 | 13.8 | 12.1 | 8.5 | 10.1 | 45 |
| Min | 57.2 | 47.3 | 44.15 | 115.9 | 13.3 | 13.6 | 11.9 | 8.4 | 9.9 | 44.65 |



Section 17.pdf

2.1 Cable tray systems shall be of the design of one manufacturer and shall be designed so that there are no burrs, projections, or sharp edges to damage cable insulation.

[Contact Us](#)



CableTray Book English

All calculations and data are based on 36 in. wide cable trays with rungs spaced on 12 in. centers with tray supported as simple spans with deflection measured at the midpoint.

[Contact Us](#)



Aluminum Cable Tray, Aluminum Ladder Cable Tray

Aluminum cable trays of NewReach are crafted from high-performance materials from durable aluminum alloys including 6063, robust steel Q235, corrosion

[Contact Us](#)



Aluminum Cable Tray

Aluminum Cable Tray systems are lighter than steel cable tray and Certified CSA Cable Tray, UL listed, NEMA and certified. Because of their lighter weight aluminum cable trays are easier to install than

[Contact Us](#)



Niedax, Kleinhuis & Fintech

CABLE TRAY DIMENSIONS Cable Tray's Accessories Range CB (Cross Bend) Width (W) mm 150 300 600 100 g50i 200 450 Height (H) mm Cover Model No. CN050tOGCB CN100tOGCB CN 150tOGCB

[Contact Us](#)





A T& B Cable Tray Metallic cable tray

Cable tray systems, including trays, supports, fittings and other materials, are generally much less expensive than conduit wiring systems. In addition, major cost savings are generated by the relative

[Contact Us](#)



Aluminium Cable Tray , Harsha Group

Available in various sizes and configurations, Harsha Group's aluminum cable trays are suitable for different cable routing needs. Specifications : Material : Aluminum

[Contact Us](#)



Aluminum Alloy Cable Tray for Corrosion-Resistant Systems

Discover aluminum alloy cable trays that are lightweight, corrosion-resistant, and optimize heat dissipation for safe, long-lasting cable management.

[Contact Us](#)



Cable Tray: Material Properties

In determining the proper aluminum alloy for structural applications such as a ventilated cable tray system, the design engineer should recognize the

[Contact Us](#)



Aluminum Cable Tray, Series 2, 3, 4 & 5



Aluminum Cable Tray, Series 2, 3, 4 & 5. o Side Rails. Our I-Beam - the most efficient structural shape . Using "Copper-free" 6063-T6 Aluminum Alloy o Rungs- provide system integrity . The rungs can

[Contact Us](#)



Aluminum Cable Ladder Specifications , PDF , Screw

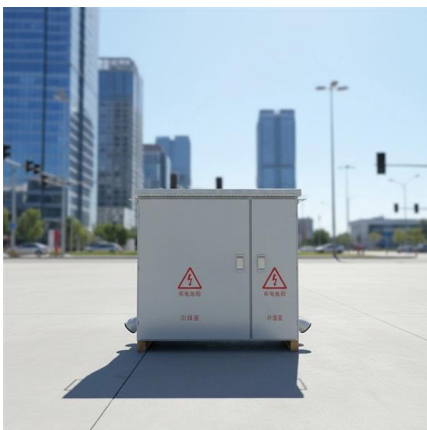
The document discusses aluminum cable ladder products from series 2, 3, 4, and 5. It provides information on straight sections, accessories, fittings, and fitting

[Contact Us](#)

Full cable tray systems specification document

B. Cable tray systems are defined to include, but are not limited to straight sections of [ladder type] [trough type] [solid bottom type] [channel type] cable trays, bends, tees, elbows, drop-outs, supports

[Contact Us](#)



Aluminum Cable Tray: Lightweight & Corrosion-Resistant

Discover the benefits of aluminum cable trays for industrial and outdoor use. Find durable, lightweight solutions with fire resistance and easy installation. Click to explore top-rated

[Contact Us](#)



Contact Us

For datasheets, pricing, or custom fiber access solutions, please visit:
<https://frindel.es>