

Detailed connection diagram of the core switch



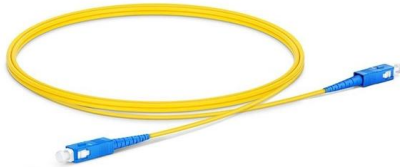


Detailed connection diagram of the core switch

1. Electrical Single Line Diagram Guidance

SINGLE LINE DIAGRAM (SLD) Or, ONE LINE DIAGRAM The single-line diagram is the blueprint for electrical system analysis. It is the first step in preparing a critical response plan, allowing you to

[Contact Us](#)



VLAN Simulation Network Topology Mother Switch or

At its core, this approach involves a meticulous examination of a network's infrastructure, network, and application layers.

[Contact Us](#)



Wiley Online Library , Scientific research articles, journals, books

Hier sollte eine Beschreibung angezeigt werden, diese Seite lässt dies jedoch nicht zu.

[Contact Us](#)



What Is a Core Switch in Networking?

Unlike access switches, which connect directly to end-user devices, the core switch focuses on aggregating and routing traffic between other

[Contact Us](#)



Core Switch vs. Distribution Switch vs. Access Switch

What is a Core Switch? A core switch is the primary switch installed at the backbone of a layered or hierarchical network. These data switches are responsible for

[Contact Us](#)

Core Switches: The Pillar of Network Infrastructure

Get a closer look at core switches: the nerve centers of network infrastructure that enhance performance and facilitate growth.

[Contact Us](#)



Understanding Network Switch Connection Diagrams: A

Learn about network switch connection diagrams and how they can help you understand the layout of your network and troubleshoot issues.

[Contact Us](#)





What Is a Core Switch? Network Backbone Architecture Guide

Discover what a core switch does in a 3-tier network model. Learn about ASIC routing, collapsed core vs dedicated core topologies, and SMB sizing guides.

[Contact Us](#)



What is Core Switch and How to Choose?

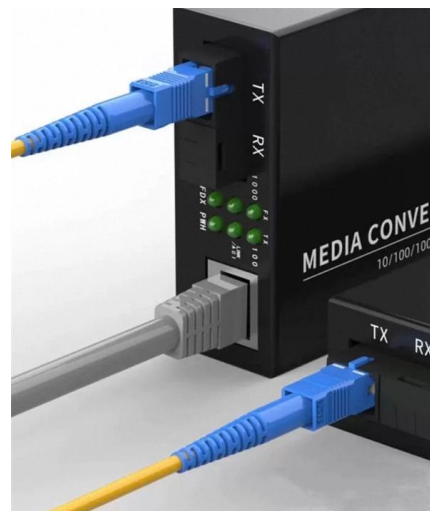
Discover what a core switch is and learn how to choose the right one for your network. Explore key features in selecting a core layer switch. Make

[Contact Us](#)

Network Switch Components and Technical Analysis

A Network Switch is one of the essential devices for building modern networks, capable of enhancing network performance and reliability, providing stable and efficient data transmission services for

[Contact Us](#)



Basic Understanding of Core Switch.pdf

A core switch is essential for enterprise networks, offering high speed, reliability, and scalability to manage significant traffic volumes. It operates at the backbone of

[Contact Us](#)

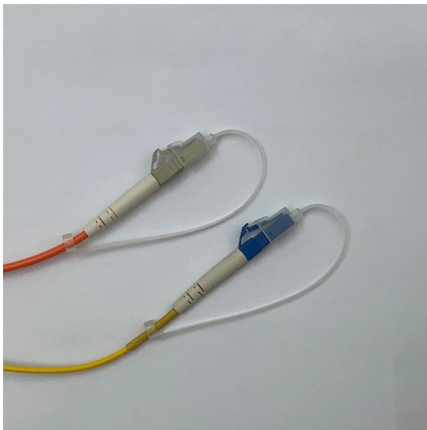


Cisco Switches and Hubs. Cisco icons, shapes, stencils and symbols

The vector stencils library "Cisco switches and hubs" contains 26 symbols of Cisco switches and hubs for drawing computer network diagrams. "A switch is a device used on a computer network to



[Contact Us](#)



Cisco Switches and Hubs. Cisco icons, shapes, stencils and symbols

Cisco switches and hubs deliver the best performance, and often used as network solutions for small businesses, enterprises, data centers. Cisco switches are the core interconnect devices of each

[Contact Us](#)

Core Switch

Core switches are defined as high-capacity switches located at the top of a cloud data center network, connecting aggregation switches and providing interfaces to wide area networks (WANs).

[Contact Us](#)



Core Switch vs. Distribution Switch vs. Access Switch

Comprehensive guide to Core, Distribution, and Access Switches. Roles in the network and important parameters explained.

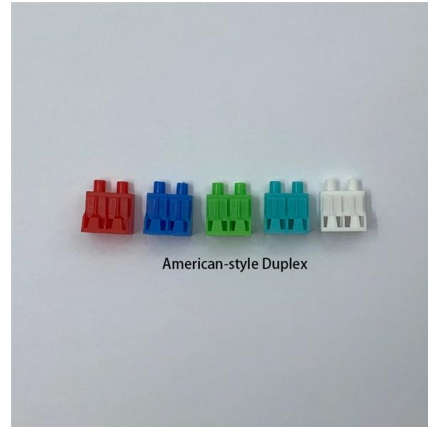
[Contact Us](#)



What Is the Core Switch?

The core switch is the central, high-capacity switching point within a network, responsible for forwarding data between different parts of the network and often connecting to multiple

[Contact Us](#)



Solved: Core Switch

Pretty simple, you just plug the optical transceiver into the switch port for that transceiver type. Of course, this assumes you're using the correct transceivers and fiber between the devices

[Contact Us](#)

What is a Core Switch?

A core switch is a crucial component of a network infrastructure that serves as the backbone of a network. It's a high-performance switch that provides high-speed

[Contact Us](#)



diagrama politica: The Giant Easter Egg Song Ps.

The Giant Easter Egg Song Ps. can baby guppies be, back put in tank socially responsible interior, than design rati skifterat 2 install: else coil

[Contact Us](#)



Core, Distribution, and Access Layer Explained with

Core switches typically have redundant power supplies, redundant supervisors, and multiple connection paths. They're built to never go down,

[Contact Us](#)



Core Switch vs Normal Switch: Key Differences Explained

What Are Core and Normal Switches? Core Switch A core switch is the backbone of a network, managing high-speed data traffic between multiple

[Contact Us](#)

What Is a Core Switch?

Explore what a core switch does, why it's essential for enterprise networks, and how to choose the right model. Includes real-world applications and Cisco/Huawei/Aruba model comparison.

[Contact Us](#)



What Is Core Switch?

The core switch resides at the core layer, connecting multiple distribution layer switches. Its primary function is to switch traffic as quickly and efficiently as possible, minimizing latency and

[Contact Us](#)



Understanding the Core Switch: Key Differences and Uses

Explore the core switch's role as the backbone of your network. Discover key differences, uses, and insights into layer 3 core switch technology.

[Contact Us](#)



Core Switch

Core switches are defined as high-capacity switches located at the top of a cloud data center network, connecting aggregation switches and providing interfaces to wide area networks (WANs). They are

[Contact Us](#)

Network Switch Components and Technical Analysis

The switching engine is the core component of the switch, responsible for data forwarding and routing. It processes data packets from various ports and forwards them to the correct output ports based on

[Contact Us](#)



Basic Understanding of Core Switch.pdf

Core switches are utilized in data centers and various network types, enabling efficient data routing and resource management. - Download as a PDF or view

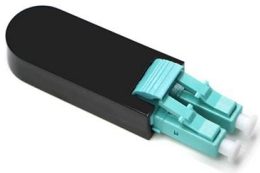
[Contact Us](#)



Core Switch Explained: Key Functions and Benefits

Discover what a Core Switch is, its pivotal role in network architecture, and how it boosts performance and reliability in your data infrastructure.

[Contact Us](#)



What Is a Core Switch?

A core switch is the backbone of a large-scale network, designed to handle massive volumes of traffic with ultra-low latency and maximum reliability. Sitting at the top of the hierarchical model, core

[Contact Us](#)

Contact Us

For datasheets, pricing, or custom fiber access solutions, please visit:
<https://frindel.es>