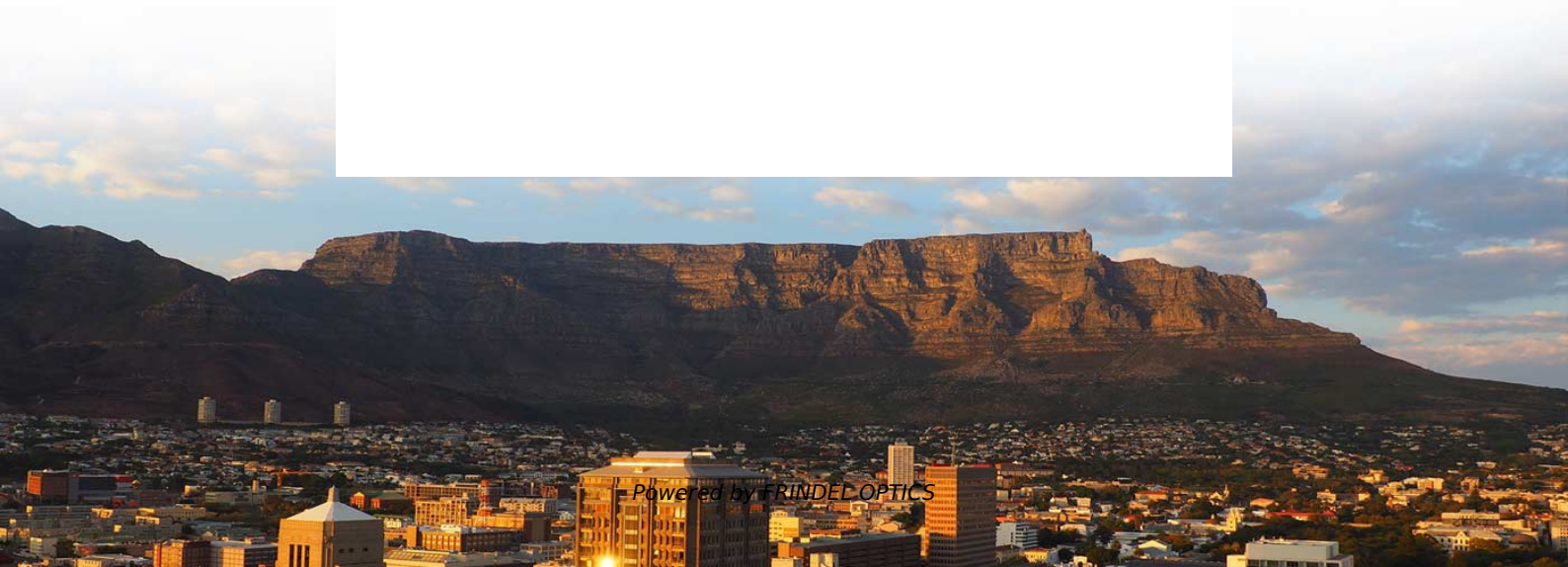


Detailed Explanation of Wavelength Division Multiplexing WDM Equipment and ATN Equipment





Overview

WDM systems are divided into three different wavelength patterns: normal (WDM), coarse (CWDM) and dense (DWDM).



Detailed Explanation of Wavelength Division Multiplexing WDM Equ



Wavelength Division Multiplexing (WDM)

The technology of combining a number of such independent information-carrying wavelengths onto the same fiber is known as wavelength division multiplexing or WDM [1-6].

[Contact Us](#)

Wavelength division multiplexing

Key topics include the principles of wavelength multiplexing and demultiplexing, the design and optimization of WDM systems, and innovative modulation techniques that enhance data transmission

[Contact Us](#)



What is Wavelength Division Multiplexing (WDM)?

Wavelength Division Multiplexing (WDM) is a technique used in fiber-optic communication systems to send multiple signals over a single optical fiber at the same time. It works

[Contact Us](#)



Wavelength Division Multiplexing

Wavelength division multiplexing (WDM) is a technique of multiplexing multiple optical carrier signals through a single optical fiber channel by varying the

[Contact Us](#)



Wavelength-Division Multiplexing: Boost Network

Discover how Wavelength Division Multiplexing (WDM) revolutionizes modern networks with expanded fiber capacity, scalability, and cost efficiency.

[Contact Us](#)

Wavelength-Division Multiplexing

Wavelength-division multiplexing (WDM) is defined as a technology that multiplexes multiple optical carrier signals onto an optical fiber by using different wavelengths of laser light, enabling bidirectional

[Contact Us](#)



What Is WDM and How Does Wavelength Division Multiplexing Work?

Introduction to Wavelength Division Multiplexing (WDM) Wavelength Division Multiplexing (WDM) is a technology that revolutionized the way data is transmitted over optical fiber networks. By

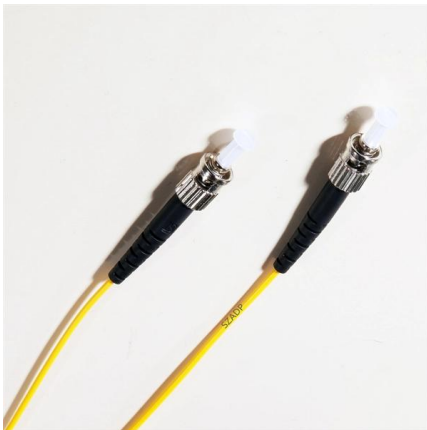
[Contact Us](#)



Wavelength Division Multiplexers (WDM)

What is Wavelength Division Multiplexing (WDM)? Wavelength Division Multiplexing (WDM) is a technique in fiber-optic communication systems that enables multiple optical signals with different

[Contact Us](#)



Wavelength Division Multiplexing (WDM): Introductory

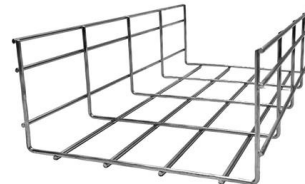
Wavelength division multiplexing or WDM has gained immense traction over the last few years. It has been the preferred choice of technology for

[Contact Us](#)

Wavelength Division Multiplexers (WDM) Selection

Wavelength division multiplexers (WDM) are electronic devices that combine light signals with different wavelengths, coming from different fibers, onto a single

[Contact Us](#)



An In-Depth Guide to Wavelength Division Multiplexing

WDM modules play a crucial role in increasing network capacity and allowing multi-service transmission by converting electrical signals into optical signals at

[Contact Us](#)



What is WDM (Wavelength Division Multiplexing)?

Wavelength Division Multiplexing (WDM) is a technology that increases the bandwidth of existing fibre optic networks. We explain the different

[Contact Us](#)



Wavelength Division Multiplexing: A Guide to Fiber Optic

Wavelength Division Multiplexing (WDM) enables multiple optical signals to travel through a single fiber by using different wavelengths of light. This optical

[Contact Us](#)

WDM (wavelength division multiplexing)

Advantages of Wavelength Division Multiplexing:
High Data Capacity: WDM allows for significant data capacity expansion without laying additional

[Contact Us](#)



Wavelength Division Multiplexing (WDM) , RF Wireless World

WDM, or Wavelength Division Multiplexing, is another such multiplexing technique. It shares similarities with FDM (Frequency Division Multiplexing) due to their mathematical relationship: $\text{Wavelength} = C$

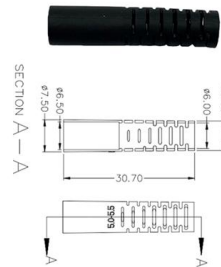
[Contact Us](#)

Introduction To WDM



Summary This introductory chapter of Wavelength Division Multiplexing: A Practical Engineering Guide traces the history of wavelength division multiplexing (WDM). WDM refers to a multiplexing and

[Contact Us](#)



What is WDM? - How wavelength division multiplexing

WDM stands for wavelength division multiplexing. It is a method for combining multiple data signals onto a single optical fiber by assigning each data stream a

[Contact Us](#)

The basics of Wavelength Division Multiplexing, WDM

The basics of Wavelength Division Multiplexing, WDM Wavelength division multiplexing, WDM, has long been the technology of choice for transporting large amounts of data between sites. It increases

[Contact Us](#)



Wavelength Division Multiplexing: A Comprehensive Guide

Discover the comprehensive guide to Wavelength Division Multiplexing, its role in optical properties, and its significance in modern telecommunications.

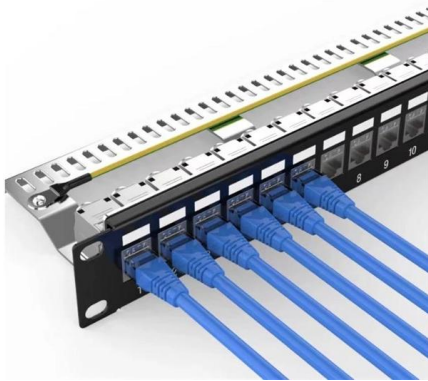
[Contact Us](#)



What Is WDM (Wavelength Division Multiplexing)? Fiber Capacity Boost

Conclusion Wavelength Division Multiplexing is a powerful technology that significantly enhances the data-carrying capacity of optical fibers, making it indispensable in the modern

[Contact Us](#)



Wavelength Division Multiplexing , WDM Technology in

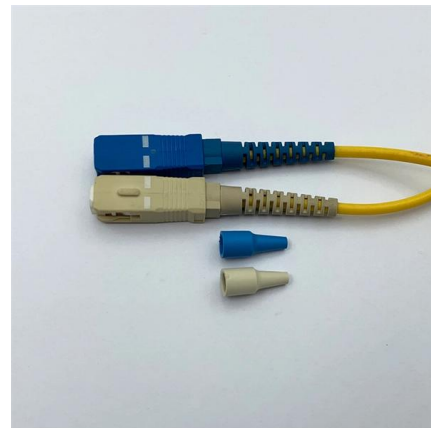
Learn why Wavelength division multiplexing (WDM) technology carries great potential to help network operators stay ahead of growing demands

[Contact Us](#)

Understanding Wavelength Division Multiplexing

Ever wondered how a single strand of optical fiber can carry the world's internet traffic, countless Zoom calls, and your favorite Netflix shows--all at once? The

[Contact Us](#)



WDM--Wavelength Division Multiplexing technology

Overview of WDM refers to Wavelength Division Multiplexing, or wavelength division multiplexing technology. It is a technology that uses optical

[Contact Us](#)

What is Wavelength Division Multiplexing



(WDM): A

Wavelength Division Multiplexing (WDM) stands out as a cornerstone, enabling multiple data streams to travel simultaneously over a single fiber. This

[Contact Us](#)



WDM 101 , Optical Communications , Corning

WDM Multiplexers and Demultiplexers combine and separate different wavelengths (colors) of light signals on a common fiber connection. This WDM technology can

[Contact Us](#)

What is Wavelength Division Multiplexing (WDM)?

Wavelength Division Multiplexing (WDM) is a technique in optical communication that allows multiple data signals to be transmitted simultaneously

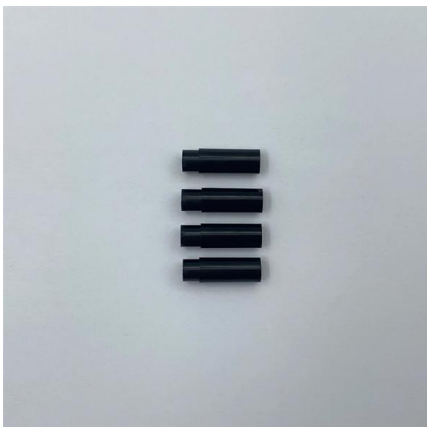
[Contact Us](#)



WDM: Wavelength Division Multiplexing

Explore the advantages and disadvantages of Wavelength Division Multiplexing (WDM), an optical multiplexing technique, in terms of bandwidth, security, and cost.

[Contact Us](#)



Introduction To WDM



Summary This introductory chapter of Wavelength Division Multiplexing: A Practical Engineering Guide traces the history of wavelength division multiplexing (WDM). WDM refers to a

[Contact Us](#)



Mastering Wavelength Division Multiplexing

Explore the fundamentals and advancements in Wavelength Division Multiplexing, a crucial technology in modern optical communications.

[Contact Us](#)



Contact Us

For datasheets, pricing, or custom fiber access solutions, please visit:
<https://frindel.es>