

# Defects in relay protection devices





## Overview

---

Critical defects include: a) Electronic transformer (including acquisition unit) failure; b) Merging unit failure; c) Intelligent terminal failure; d) Process layer network switch failure; e) Protection device failure or abnormal withdrawal;

Critical defects include: a) Electronic transformer (including acquisition unit) failure; b) Merging unit failure; c) Intelligent terminal failure; d) Process layer network switch failure; e) Protection device failure or abnormal withdrawal;

Critical defects refer to those with severe nature and urgent conditions that directly threaten safe operation. Emergency measures should be taken immediately, and resources organized to eliminate them.

Critical defects include: a) Electronic transformer (including acquisition unit) failure; b). The incorrect operation of protective relays and circuit breakers will significantly compromise the safety and stability of power systems.



## Defects in relay protection devices



### Modeling and Analysis of Incorrect Actions of Relay

Recognizing the above problems, based on the 10-year field data, this paper proposes fault tree analysis for the IAs of RPS to discover relationship

[Contact Us](#)

### Design of an adaptive identification method for faulty operating states

The experimental results demonstrate that the proposed method accurately identifies faulty operation states in relay protection devices and exhibits adaptability to power systems of

[Contact Us](#)

PRODUCT CATEGORY				
Open rack Series	2-post Open rack	12U Open rack	18" Open rack	Adjustable Depth Open rack
Wall mount rack Series	Glass door Wall mount rack	Mesh door Wall mount rack	Double section Wall mount rack	Economic top Wall mount rack
Floor standing server rack	Glass door with casters	Mesh door with casters	12U Standard Server rack	Double door Server rack
Outdoor cabinet	A/C conditioner Outdoor cabinet	Outdoor cabinet with mesh	Outdoor cabinet with fan cooling	Double Wall Outdoor cabinet
Splitter series	Bare Fiber Splitters	Blackless Fiber Splitters	ABS Splitter	Panel Splitters
Splitter series	12U Splitters	Rack Mount Splitters	Mini Plug-in Type Splitter	Tray Splitters
Patch cord series	ST	SC	FC	LC
FTTH product series				



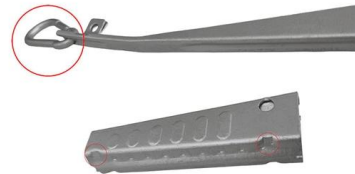
### Failure of electronic components

In semiconductor devices, parasitic structures, irrelevant for normal operation, become important in the context of failures; they can be both a source and

[Contact Us](#)

### Classification of Equipment Defects for Relay Protection

Guide to classifying relay protection and safety automatic device defects in substations per Q/GDW 11024-2013 standard. Covers critical, serious,



### Defect Prediction of Relay Protection Systems Based on LSSVM-BNDT

Accurate and robust defect diagnosis methods of relay protection systems could enhance power systems safety and prevent casualties. It is challenging for traditional defect diagnosis

[Contact Us](#)



### State Assessment of Relay Protection Device Based on Defect

Second, the reliability of relay protection device is analyzed by Markov model, and GO method is used to analyze the reliability of relay protection system based on the characteristics of

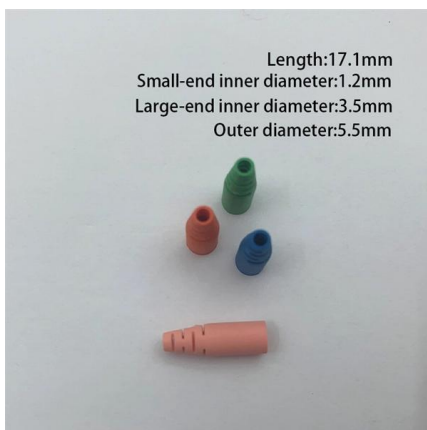
[Contact Us](#)



### Fault Tracing Method for Relay Protection

To promptly detect the faults of the relay protection system and the circuit breakers in time and to ensure the operational reliability of these protective

[Contact Us](#)





## Relay Testing and Maintenance , Delgado Relay Protection Reference

In conclusion, relay testing and maintenance are vital for ensuring the reliable operation of protective relays in power systems. Through testing, we can assess their performance and

[Contact Us](#)



## Data Dependence Analysis for Defects Data of Relay

The original record data for the defect of the relay protection devices (RPDs) collected on site is and may contain problems influencing the data

[Contact Us](#)

## Power System Protective Relays: Principles & Practices

Protective relays and devices have been developed over 100 years ago to provide "lastline"of defense for the electrical systems. They are intended to quickly identify a fault and isolate it so the balance of

[Contact Us](#)



## Relay Protection Hidden Fault Monitoring and Risk Analysis

But since the 1990s, the microcomputer protection device its own hardware and software technology and substation integrated automation has become a priority in the relay protection

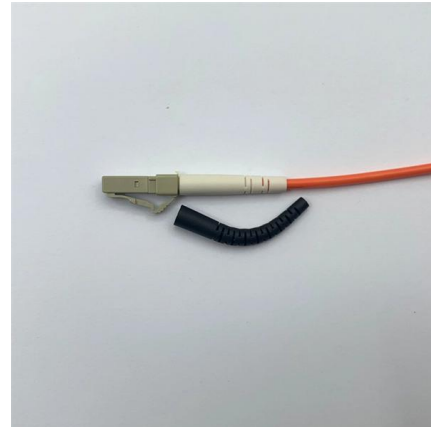
[Contact Us](#)



## Protection Relay Types and Testing Procedures

Introduction In modern electrical systems, protection relays are critical for ensuring safe and efficient operations. These devices safeguard assets

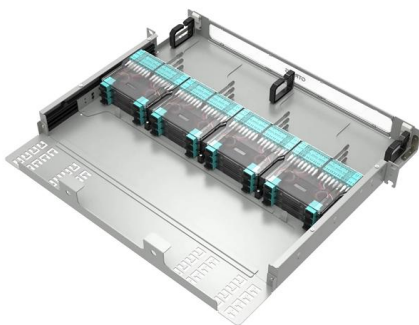
[Contact Us](#)



### An Evaluation Method to the Record Text for the Defects of the Relay

In this section, three common problems that occur in records text for the defect of PRDs are listed. This paper focuses on the defect processing logs of relay protection devices in a regional

[Contact Us](#)



### A method for identifying familial defects in relay protection

The extraction of familial defects in relay protection equipment in this article plays an important role in identifying common safety hazards in the safe operation of the power grid.

[Contact Us](#)



### An Evaluation Method to the Record Text for the Defects of the Relay

The original record data for the defect of the relay protection devices (RPDs) collected on site is and may contain problems influencing the data mining, and it is lack of quantitative evaluation.

[Contact Us](#)





### **(PDF) On Defect Grading for the Relay Protection Devices Based on**

Based on the text record of defects of RPDs in a regional power grid and the defect text dictionary, this paper analyses the defect grading method with Term Frequency-Inverse Document

[Contact Us](#)



### **On Defect Grading for the Relay Protection Devices Based**

Based on the text record of defects of RPDs in a regional power grid and the defect text dictionary, this paper analyses the defect grading method with Term Frequency-Inverse Document

[Contact Us](#)



### **Construction and Applications of Knowledge Graph of Relay**

The defect data of relay protection device contains rich operation and maintenance management information that needs to be excavated, and its effective utilizat

[Contact Us](#)



### **(PDF) On Defect Grading for the Relay Protection Devices Based on**

Secondly, the vectorization text of relay protection devices defect is formed; combined with TF-IDF assignment method, and then, the relay protection devices defect grading models based on

[Contact Us](#)





## Fault Diagnosis Method of Relay Protection Based on Expert Rule

At present, the diagnosis of relay protection faults still relies on personnel on-site inspection, and the application of online monitoring information and alarm information of relay

[Contact Us](#)



## Suspected Relay Failure Diagnosis , TE Connectivity

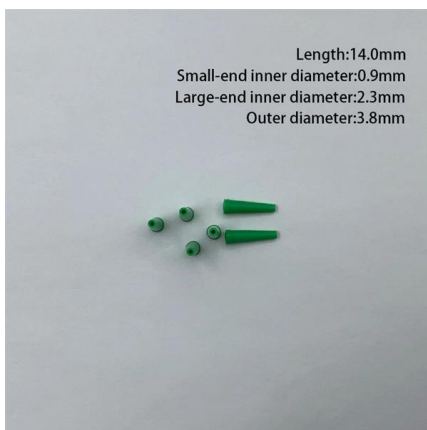
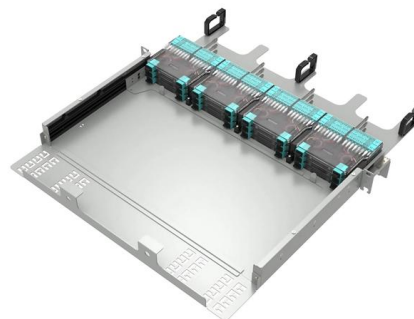
Read guidance from TE engineers about how to identify and verify possible issues with relay performance.

[Contact Us](#)

## A Reliability Prediction Model for the Relay Protection Device and Its

Relay protection is the first line of defense to ensure the safe and stable operation of the power system, thus, the reliability of the relay protection device (RPD) is crucial to the safe and stable operation of

[Contact Us](#)



## What are the Most Common Relay Failure Reasons?

In this article, you will learn the most common relay failure reasons and how to avoid frequent relay problems.

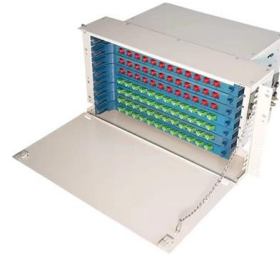
[Contact Us](#)



## The SOLUTIONS Relay Defects [SSR Edition]

Install protective devices to counteract the short-circuit current that flows due to earth faults and short-circuits. If it is necessary to protect the SSR, we recommend that you use a quick-break fuse.

[Contact Us](#)



## Contact Us

---

For datasheets, pricing, or custom fiber access solutions, please visit:  
<https://frindel.es>