

Debugging the OLT Optical Line Terminal 40G





Overview

Configure the debugging and maintenance terminal for the serial interface. A complete multi-vendor reference for GPON/EPON OLT configuration, monitoring & troubleshooting. This repository serves as a technical knowledge hub for network engineers working with FTTH (GPON/EPON) infrastructure. High-Performance 16-Port XGS-PON OLT with 40G/100G Uplink Capability PLANET XGPL-16000 is a high-density 16-Port XGS-PON Optical Line Terminal (OLT) designed for next-generation fiber broadband access networks. It integrates 16 XGS-PON ports, 8 10G SFP+ ports, and 2 40G/100G QSFP28 uplink ports. It supports multiple technologies, massive bandwidth, and a compact size to enable flexible. A single issue with an OLT can lead to a significant number of internet subscribers being disconnected from service.



Debugging the OLT Optical Line Terminal 40G



EPON, GPON, 10G EPON, 10G GPON OLT: How do

The Basic Concept of OLT OLT is optical line terminal. The PON network consists of OLT, ODN and ONU. OLT belongs to the service node side of

[Contact Us](#)

PON Interface Diagnostic Commands

To monitor the stack interface status or locate faults on a stack interface, run the display optic-status command to view the status of the optical module on the PON interface.

[Contact Us](#)



UFiber GPON Datasheet

Optical Line Terminal Fiber OLT supports up to 128 ONU CPEs per GPON port with physical links of up to 20 km in distance. It also features SFP+ connectivity for uplinking. The UFiber OLT can be

[Contact Us](#)

ZTE OLT System Test Procedure

Optical Line Terminal (OLT) is a device that offers centralized control, aggregation, conversion, security, service provisioning, and troubleshooting

[Contact Us](#)



Installation Guide

TP-Link GPON OLT (Optical Line Terminal) products are designed to provide business-class solutions for ISP's access networks, and they are scalable and reliable for deploying services

[Contact Us](#)

Optical line termination

An optical line termination (OLT), also called an optical line terminal, is a device which serves as the service provider endpoint of a passive optical network.

[Contact Us](#)



U®Fiber UF-OLT Quick Start Guide

Introduction Thank you for purchasing the Ubiquiti Networks® U®Fiber OLT-4. This Quick Start Guide is designed to guide you through installation and also includes warranty terms.

[Contact Us](#)



FlexSym Optical Line Terminal Two (OLT2)



The Tellabs FlexSym® OLT2 Optical Line Terminal is a multi-purpose Optical Line Terminal (OLT) enabling open, simple, and scalable connectivity for wired and

[Contact Us](#)



Netronixbd/OLT-and-Switch-Config-Troubleshooting

It contains configuration commands, troubleshooting methods, power-check commands, and best practices for multiple OLT brands. Whether you're managing a large ISP or setting up a lab,

[Contact Us](#)



Guide to Optical Line Terminal (OLT) Classifications:

In modern communication networks, optical line terminal (OLT) is the core device to realize point-to-multipoint (P2MP) in passive optical network (PON)

[Contact Us](#)



Basic Knowledge About Optical Line Terminal (OLT)

What Is OLT? An optical line terminal (OLT), also known as optical line termination, acting as the endpoint hardware device in a passive optical network.

[Contact Us](#)



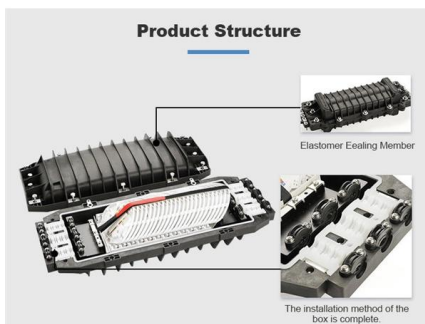
Guide to Optical Line Terminal (OLT)



Classifications: Detailed Types

In modern communication networks, optical line terminal (OLT) is the core device to realize point-to-multipoint(P2MP) in passive optical network (PON) architecture. The OLT is responsible not only for

[Contact Us](#)



Defining OLT: Optical Line Terminal

The workings of an OLT: Learn about the role, structure, and operational dynamics of Optical Line Terminals.

[Contact Us](#)

GPON OLT Basics and Beyond: A Comprehensive

In today's rapidly evolving optical networking landscape, GPON (Gigabit Passive Optical Network) technology stands as the mainstream solution

[Contact Us](#)



What Is an OLT? , Definition, Function & Role in GPON

Introduction - Why OLT Matters in Modern Fiber Networks In the age of fiber-to-the-home (FTTH) and ultra-broadband connectivity, the Optical Line

[Contact Us](#)



U@Fiber UF-OLT Quick Start Guide

Introduction Thank you for purchasing the Ubiquiti Networks® U@Fiber OLT. This Quick Start Guide is designed to guide you through installation and also includes warranty terms.

[Contact Us](#)



FlexSym BOLT Optical Line Terminal (FlexSym BOLT)

The Tellabs FlexSym BOLT Optical Line Terminal is a multi-purpose Optical Line Terminal (OLT) enabling open, simple, and scalable connectivity for wired and

[Contact Us](#)

ZTE OLT System Test Procedure

The thunder-link team ensures every OLT will be tested by the engineers comprehensively before delivering to customers. This article will introduce the

[Contact Us](#)



ZTE OLT System Test Procedure

Configure the debugging and maintenance terminal for the serial interface. Connect the console interface of the control and switching board to the

[Contact Us](#)



Exploring the OLT (Optical Line Terminal)

Dive into the heart of fiber networks with our in-depth exploration of Optical Line Terminal (OLT). Uncover the crucial role it plays in revolutionizing high-speed data transmission and network

[Contact Us](#)



OLT (Optical line terminal) , G-PON (Gigabit passive)

A gigabit passive optical network (G-PON) comprises optical line terminals (OLTs) and optical network units (ONUs), and Murata's lineup of products for use in

[Contact Us](#)

Read the Key Functions of the Optical Line Terminal

Explore the essential functions of Optical Line Terminals (OLTs) in GPON networks. Learn about data transmission, authentication, bandwidth

[Contact Us](#)



Read the Features Optical Line Terminal (OLT)

Optical line terminals, also referred to as optical line terminations (OLTs), is a hardware device that acts as the endpoint for passive optical

[Contact Us](#)



How to configure Optical Line Terminal (OLT) and Omada Switch with

1. Application Scenario An apartment wants to use the XM60A to enable Omada equipment to access the OLT for networking and flexible deployment. They have the following

[Contact Us](#)



TELLABS OLT2 INSTALLATION MANUAL Pdf Download , ManualsLib

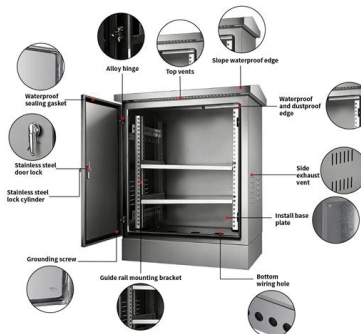
INTRODUCTION This document provides instructions to install the Tellabs® OLT2 Optical Line Terminal (OLT2). The OLT2 is a self-contained and sealed unit, for mounting on a wall or in standard 19-in

[Contact Us](#)

40G-OCDMA-PON network architecture with optical line

In this work we consider the problem of fault localization in transparent optical networks. We attempt to localize single-link failures by utilizing statistical machine

[Contact Us](#)



Guide to Optical Line Terminal (OLT) Classifications: Detailed Types

In modern communication networks, optical line terminal (OLT) is the core device to realize point-to-multipoint (P2MP) in passive optical network (PON) architecture. The OLT is

[Contact Us](#)

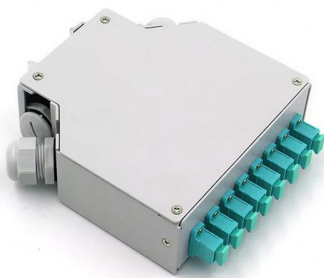


FlexSym Optical Line Terminal Six (OLT6)



The Tellabs FlexSym® Optical Line Terminal Six (OLT6) distribution shelf is designed for mid-sized enterprise deployments. The Tellabs FlexSym OLT6 is scalable for enterprise Optical LAN support of

[Contact Us](#)



XGPL-16000

It supports TFTP remote software upgrade, debugging output, system logs, and batch ONU provisioning. With strong system maintainability and remote operation

[Contact Us](#)

Contact Us

For datasheets, pricing, or custom fiber access solutions, please visit:
<https://frindel.es>