



Customized Aggregation Switch 1G





Customized Aggregation Switch 1G



NS-S5760C Switches , Custom-Brand L3 Aggregation with 10G SFP+

The NS-S5760C Switches from Network-Switch give you the same-class performance of premium Layer 3 switches with 1G access and SFP+ 10G uplinks, delivered as your product.

[Contact Us](#)

Port Aggregation Configurations

Port Aggregation Port aggregation allows you to group multiple physical ports into one unit. Port aggregation is useful for implementing load balancing and provides a redundant link backup. To

[Contact Us](#)



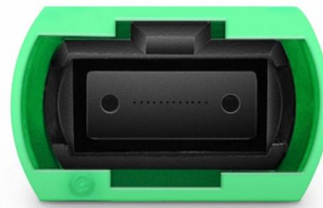
Link Aggregation

Link Aggregation The Link Aggregation tab for a stack provides options to configure link aggregation groups for each device in the stack. Link aggregation configuration depends on the number of ports

[Contact Us](#)

Everything You Need to Know About Aggregation Switch

A: Ubiquiti UniFi is a brand of networking equipment, including aggregation switches, that offers high-performance and easy-to-manage solutions



What Is an Aggregation Switch and How to Choose?

Discover the role of aggregation switches. Explore differences between aggregation, access, and core switches, and choose the right model for your network.

[Contact Us](#)



S5810 Series Switches Datasheet , FS

S5810 series switches are ideal for acting as an aggregation of large campus networks and core of small to medium size enterprise networks. Pre-loaded with PicOS, equipped with

[Contact Us](#)



Does the Aggregation Switch work with 1gb sfp connections or

Aggregation switch works fine with 1Gbit connections. I had mine on a 1Gbps uplink to a US-16-150W with no issues. When I moved house I finally had 10Gbit uplink between all my rack switches and my

[Contact Us](#)



Back Button



Hier sollte eine Beschreibung angezeigt werden, diese Seite lässt dies jedoch nicht zu.

[Contact Us](#)



Aggregation Switch: Increasing the Priority of Special Traffic

Aggregation switches set up stacks to implement device-level backup and increase the interface density and forwarding bandwidth. Before deploying QoS, ensure that the campus network is connected. For

[Contact Us](#)

FS Releases 1G Fiber Optic Switch for

FS has recently officially declared a new 1G fiber optic switch - S5800-48F45R, which is designed to meet the requirements of the next

[Contact Us](#)



Copper Aggregation TAPs

Copper Aggregation TAPs Portable Aggregating TAP for 10/100/1000M (1G) Copper Networks Get a Quote

[Contact Us](#)



Meraki Aggregation Switch MS425-16 , Liberty Systems

Liberty Systems offers the Meraki MS425-16 Layer 3 switch. Perfect for large networks, offering 16 x 10G ports, 2 x 40G uplinks, and 480G capacity.

[Contact Us](#)



GWN76xx - Link Aggregation Guide

Link Aggregation Best Practices To ensure reliable operation when deploying link aggregation between a GWN76xx access point and another device, follow these best practices:

[Contact Us](#)

CRS as Aggregation switch

What I am trying to accomplish is utilize the CRS317-1g-16s+ as an aggregation switch so that the remote switches and core switch can live on the Mikrotik, rather than switch to switch on the

[Contact Us](#)



Link Aggregation: What is it, and How Does it Work?

Multi-chassis versions of link aggregation One of the really interesting ways of deploying an aggregated link is to connect a device to a redundant pair of

[Contact Us](#)



Aggregation Switches , Zyxel Communications

Zyxel's aggregation switches have several benefits ? Advanced QoS for convergent services
Enhanced security Resilient and redundant design

[Contact Us](#)



Link Aggregation and Load Balancing

Configuring Link Aggregation between MS and Cisco Switches You may want to set up and configure a bonded link between your Meraki MS series switch and a Cisco switch. This is often

[Contact Us](#)

r/networking on Reddit: Link Aggregation 10G -> 4x1G

Our WAN has been upgraded to 10G fiber but the LAN runs from an existing managed 1G switch. Is there any upside to connecting all 4 1G ports on the router to the switch and configuring link

[Contact Us](#)



Configure an Aggregate Interface Group

An aggregate interface group uses IEEE 802.1AX link aggregation to combine multiple Ethernet interfaces into a single virtual interface that connects the firewall to another network device or

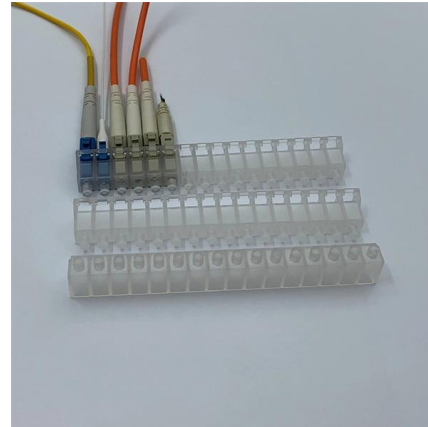
[Contact Us](#)



NS-S5760C Switches , Custom-Brand L3 Aggregation with 10G SFP+

Explore NS-S5760C Switches, customizable Layer 3 aggregation switch with SFP+ uplinks, VSU/ERPS resiliency, PoE aggregation options, and deep L3 features.

[Contact Us](#)



Stackable Aggregation Managed Switches

Stackable Aggregation Managed Switches Streamlined Aggregation, Maximum Efficiency Versatile Speeds Provides 1G, 2.5G, and 10G speeds for flexible

[Contact Us](#)

Switch Hi-Capacity Aggregation

A 32-port, Layer 3 switch made for high-capacity 10G SFP+ and 25G SFP28 connections.

[Contact Us](#)

LoRawan outdoor base station

- * Industrial Internet gateway
- * Compatible with LoRaWAN network,
- * ClassA/B/C mode
- * Support 8/16 channel
- * Supports PoE power
- * supply and backup battery power supply
- * 10KV lightning protection



Aggregation, Layer 3 switch with 8 1G combo ports

Nodexon's NX-3875-28S4X aggregation switch is a manageable Layer 3 switch that comes with eight 1G combo ports. It is developed to keep up with growing combination requirements such as, it

[Contact Us](#)



Aggregation Switch

An aggregation switch refers to a type of switch used to connect multiple ToR switches to a core switch/router in a cloud data center network. It enables high-bandwidth aggregation ports to be

[Contact Us](#)



Cisco Switch Port Aggregation

How to configure an etherchannel link between 2 cisco 2960 switches. The etherchannel allows to combine several physical switch ports into one logical port.

[Contact Us](#)



Aggregation Switches Market Report , Global Forecast From 2025 To

The global market size for aggregation switches was valued at approximately USD 15.3 billion in 2023 and is expected to reach USD 25.4 billion by 2032, growing at a compound annual growth rate

[Contact Us](#)



Contact Us

For datasheets, pricing, or custom fiber access solutions, please visit:
<https://frindel.es>