

# Customized 10G Aggregation Switch





## Customized 10G Aggregation Switch

---



### Ubiquiti US-16-XG Unifi 10G 16-Port Managed

Layer 2 aggregation switch with (12) 10G SFP+ ports and (4) 10GbE RJ45 ports. Provide high-bandwidth aggregation connectivity to multiple switches in your

[Contact Us](#)

### High-Performance Enterprise 10G Aggregation/Core Switch Series -

Designed with a high-performance chip architecture, the switch delivers 10G SFP+ ports and 100G QSFP28 uplinks, providing a powerful combination of high density access and ultra high

[Contact Us](#)



### H3C S6530X Series Advanced Aggregation 10GE Switches

It provides up to 48/24\*1GE/10GE autosensing SFP+ ports and 8\*100G ports. The switch supports modular power modules and fan trays. By using different fan trays, the switch can provide field

[Contact Us](#)

### Electra 12 port Fiber aggregation switch 10GB

Compact and rack-mountable with intuitive LED indicators and a robust metal chassis, this switch is built for professional installations. With support for both AC



**Ubiquiti Networks ES-16-XG-US EdgeSwitch 16 XG,**

10G 16-Port Managed Aggregation Switch Available with sixteen 10G ports, the high-performance EdgeSwitch(TM) enhances network capacity and provides high

[Contact Us](#)



**XS3800-28 , 28-port 10GbE L3 Aggregation Switch , Zyxel Networks**

Essentials of a core switch XS3800-28 is suitable for network aggregation such as SMB or campus networks that require low latency and high-density 10G backbone architectures with basic routing

[Contact Us](#)



**Ubiquiti USW Aggregation Review**

I take a close look at the Ubiquiti USW Aggregation network switch (USW-Aggregation). This 10 gigabit network switch offers: \* Eight (8) 10Gbps SFP+ ports\* 16

[Contact Us](#)





### **Ubiquiti 10G 16-Port Managed Aggregation Switch**

The US-16-XG is a fully managed, 16-port, 10G fiber switch that enhances network capacity by providing high-bandwidth aggregation connectivity to multiple

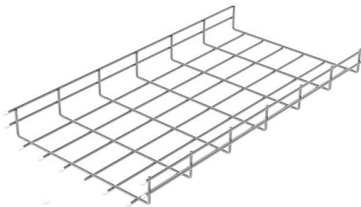
[Contact Us](#)



### **10Gb NIC & Switch + Link Aggregation Suggestion**

10Gb NIC & Switch + Link Aggregation Suggestion By Cat Graphic September 11, 2019 in Networking network link aggregation Share

[Contact Us](#)



### **Low-Latency Aggregation Switch 10Gbps with custom services**

We are a FTTx solution provider in China with rich experience in Low-Latency Aggregation Switch 10Gbps with custom services, with competitive price and top quality.

[Contact Us](#)



### **Ubiquiti UniFi 16-Port 10G Managed Aggregation Switch**

Build and expand your network with Ubiquiti Networks UniFi Switch 16 XG, part of the UniFi Enterprise System. The US-16-XG is a fully managed, 16-port, 10G fiber

[Contact Us](#)





## Ubiquiti Networks UniFi Switch: Ultimate Guide to the 10

The UniFi Switch 10 Gigabit 16-Port Managed Aggregation Switch by Ubiquiti Networks is a flexible and high-performing device designed for modern

[Contact Us](#)



### 10gb aggregation switch , Newegg

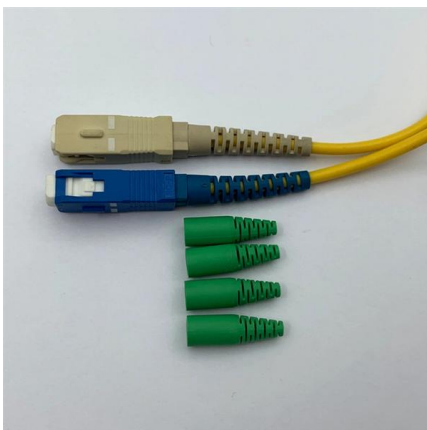
Search Newegg for 10gb aggregation switch. Get fast shipping and top-rated customer service.

[Contact Us](#)

### 24 Port 10G Aggregation Switch Enterprise SONiC

Boasting 24×10GbE and 4×100GbE ports, the device supports interface splitting via breakout cables, which helps enhance the efficiency of network resource usage

[Contact Us](#)



### 10 Gb Gigabit Switches , NETGEAR

Take advantage of cost effective 10GbE switching solutions to support high speed networking requirements. NETGEAR is the first networking provider to deliver 10

[Contact Us](#)



## Ubiquiti UniFi Aggregation 8-Port 10G SFP+ Layer 2

The Ubiquiti UniFi USW-Aggregation is a managed Layer 2 switch with eight 10G SFP+ ports, offering link aggregation for higher capacity and increased availability.

[Contact Us](#)



## FS Community

Hier sollte eine Beschreibung angezeigt werden, diese Seite lässt dies jedoch nicht zu.

[Contact Us](#)

## Switch Aggregation

Faster replacement and priority support, covered for 5 years. High-performance 10G SFP modules for optimal connectivity. An 8-port, Layer 2 switch made for 10G SFP+ connections.

[Contact Us](#)



## 10G Aggregation Switch worth it? : r/Ubiquiti

10G Aggregation Switch worth it? Currently setting up a server/network rack and I just bought a UDM-SE but I'm also wanting a 10g switch. I've been eyeing the 10g aggregation switch but I saw in other

[Contact Us](#)



### **Ubiquiti UniFi Switch 16 XG 10G fiber 16-Port managed**

Ubiquiti UniFi Switch 16 XG 10G fiber fully managed aggregation 16-port switch 12X SFP+ ports and 4X 10G RJ45 ports, maximum performance and low latency as

[Contact Us](#)



### **Aggregation Switch , 10G Fiber Backbone , Omada Store**

Equipped with all-fiber ports, Omada Aggregation Switches deliver up to 10 Gbps. With advanced features such as Static Routing, DHCP Server, ACL, IGMP Snooping, STP, LAG, and centralized

[Contact Us](#)



### **Meraki Switches**

Meraki MS Switches combine enterprise-grade hardware with cloud management, allowing your organization to scale effortlessly. Explore the models.

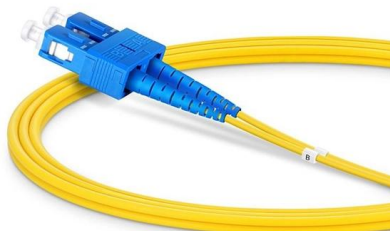
[Contact Us](#)



### **High-Performance Enterprise 10G Aggregation/Core Switch Series -**

The MES6000 series is a high performance aggregation 10G core/aggregation switch engineered for modern enterprise and education networks that require reliable, flexible, and scalable

[Contact Us](#)

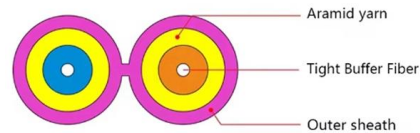




## Interfaces User Guide for Switches

Link Aggregation Group (LAG) You configure a LAG by specifying the link number as a physical device and then associating a set of interfaces (ports) with the link. All the interfaces must have the same

[Contact Us](#)



### NS-S5760C Switches , Custom-Brand L3 Aggregation with 10G SFP+

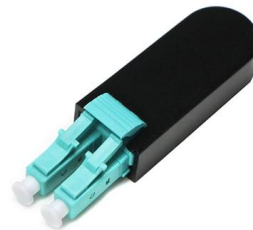
Explore NS-S5760C Switches, customizable Layer 3 aggregation switch with SFP+ uplinks, VSU/ERPS resiliency, PoE aggregation options, and deep L3 features.

[Contact Us](#)

### Custom 10GBASE-T Copper SFP+ MODULE , Tailored RJ45

Upgrade to 10G over copper securely. Wolon's custom 10GBASE-T Copper SFP+ MODULE features bespoke firmware coding for flawless hardware integration.

[Contact Us](#)



### 10Gb NIC & Switch + Link Aggregation Suggestion

Which I have no idea how DAC and Fiberoptic works. Currently I'm imagining plugging a Cat6 or Cat7 from the new 10gb NIC on our server, plug it to the new Switch and then distribute

[Contact Us](#)



## Contact Us

---

For datasheets, pricing, or custom fiber access solutions, please visit:  
<https://frindel.es>