

Customization Process for Remote Monitoring Type SC Adapters for Railway Communication





Customization Process for Remote Monitoring Type SC Adapters for



On tailored signal processing tools for operational

As there are hundreds of thousands of S& C in Europe, railway administrators are interested to advance solutions for reliable and resilient

[Contact Us](#)

Controlguide Rail 9000 EN

Existing rail-specific systems and applications can be integrated into Controlguide Rail 9000, both cost-effectively and with a low level of risk. In this way, you can structure and optimize your operating

[Contact Us](#)



Remote condition monitoring proves its worth

Remote condition monitoring proves its worth. Condition monitoring can help to significantly improve the performance and availability of railway assets. Rob

[Contact Us](#)



Digital Transformation in Train and Railway Communications

Cyber security is also a growing concern, as it can cause equipment and infrastructure to come to a halt, resulting in severe service interruptions. Furthermore, regulatory bodies are constantly updating



Intelligent Railway Solutions

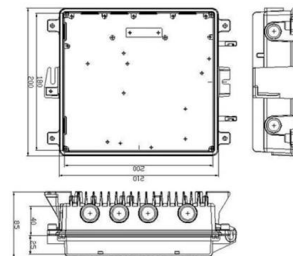
Building Up Intelligent Railway Solutions
 Advantech, in partnership with railway operators and integrators world-wide, has dedicated resources to designing and developing new products designed

[Contact Us](#)

Wireless Sensor Networks for Condition Monitoring in the Railway

Wireless sensor networks can now be used for monitoring the railway infrastructure such as bridges, rail tracks, track beds, and many track equipment along with vehicle health monitoring such as chassis,

[Contact Us](#)



Remote condition monitoring and validation of railway

Remote condition monitoring and validation of railway points were discussed. Recent developments in microelectronics and information technology

[Contact Us](#)





Railway Auto Signalling and CAS Implementation Based on RTU

From the above Fig.4 we can observed that how the Remote Terminal Units are communicated in between the stations for signaling communication. Here the number of RTU"s is intercommunicated

[Contact Us](#)



Remote Condition Monitoring , Cutting Edge Signalling

Softtech Rail's expertise in Train Control Engineering ensures that your systems are not only efficient but also equipped with the latest safety

[Contact Us](#)

Smart wireless railway monitoring system

With the increased demand for railway services, train speed and density are consistently increasing in the last two decades. As a result, more strict safety requirements for railway signaling,

[Contact Us](#)



Intelligent Monitoring of Rail Transit System

As an important communication and monitoring medium in the vehicle operation process of traditional rail transit system, signal system is mainly responsible for train route management, real-time

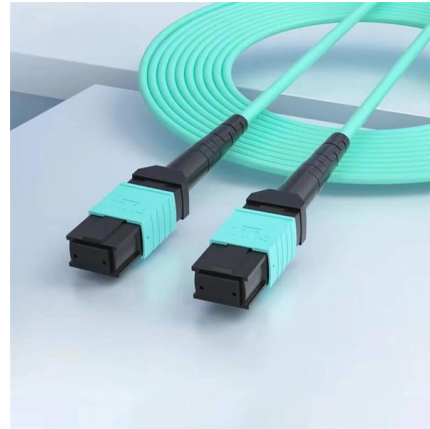
[Contact Us](#)



A revolution in railway communication

Obsolescence of communication technology -- the railway sector's biggest challenge With the obsolescence of GSM-R as a technology used for

[Contact Us](#)



Condition Monitoring Systems in the Railway Industry

The railway industry is currently investing in condition monitoring technologies in order to achieve lower failure rates and provide a better service. The new technologies that are being utilised within the

[Contact Us](#)

The Use of Earth Observation Data for Railway Infrastructure Monitoring

However, remote sensing data from Earth Observation (EO) satellites remain comparatively underutilized in railway applications. While the use of GNSS data in railways is well documented in



[Contact Us](#)



Description of Railway Radiocommunication

1 Scope This Report addresses the architecture, applications, technologies and operational scenarios of Railway Radiocommunication Systems between Train and Trackside (RSTT) for all types of trains

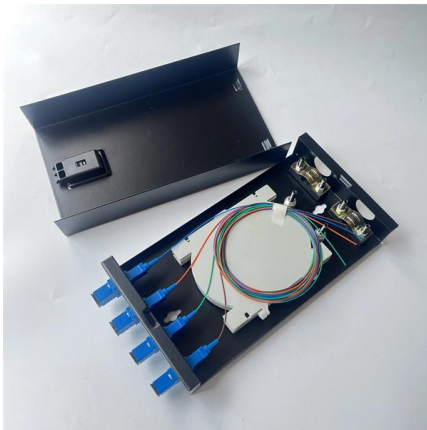
[Contact Us](#)



SUPERVISION AND MONITORING SYSTEMS FOR THE RAILWAY

To support this goal, supervision and monitoring systems must transition from analog to digital in order to maximize asset availability, reduce maintenance costs, reinforce security, and improve the quality

[Contact Us](#)



A review of railway infrastructure monitoring using fiber optic sensors

This article reviews the current state-of-the-art of fiber optic sensing/monitoring technologies, including the basic principles of various optical fiber sensors, novel sensing and

[Contact Us](#)

Railway communications needs great network design

Today, railway communications are a challenge. Here's how MBB connectivity, powered by 4G and 5G network design will drive faster, safer and greener travel.

[Contact Us](#)



Condition Monitoring Systems in the Railway Industry

Condition monitoring of railway vehicle and track dynamics are monitored via track-based systems or vehicle-based systems . Systems that are track-based are usually used for

[Contact Us](#)

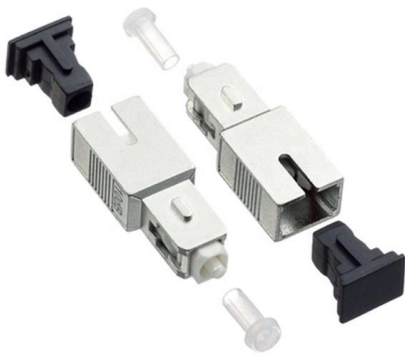




Introduction to railway communication systems

In Japan, radio communication systems with railways are generally categorized into two types based on applications; train operation and passenger services. Several train companies have started Wi-Fi

[Contact Us](#)



Remote Conditioning Monitoring Systems

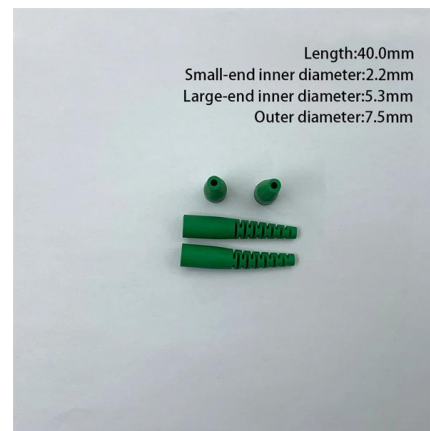
Remote Conditioning Monitoring Systems As a rail network expands and the capacity for track access increases, the performance and reliability of infrastructure is critical. As a result rail

[Contact Us](#)

Railway Control-Command Signalling system

Rail Temperature Monitoring system provides continuous temperature monitoring - allowing adjustments to be made to loads and speed of travel, reducing external stresses and the likelihood of the rail

[Contact Us](#)



Integrated railway remote condition monitoring

development and implementation of a novel customised remote condition monitoring system based on the integration of acoustic emission and vibration analysis. The customised system can be further

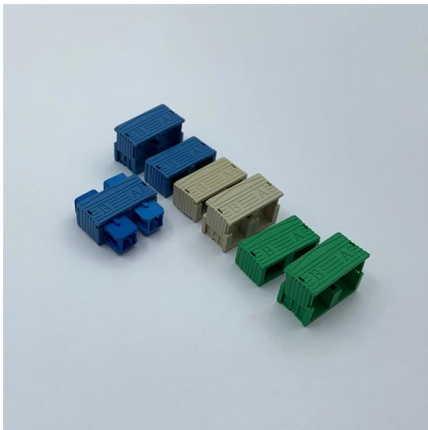
[Contact Us](#)



Railway Communications Solutions

Railway operators, integrators, and regulators rely on our expertise for mission-critical communications. With decades of rail experience, our engineers deliver

[Contact Us](#)



In-station and control centre comms solutions

For train stations and mission-critical infrastructure equipment, data is collected from remote devices located in-station or trackside to enable real-time monitoring of

[Contact Us](#)

Future Railway Mobile Communication System

No part of this publication may be copied, reproduced or distributed by any means whatsoever, including electronic, except for private and individual use, without the express

[Contact Us](#)



Wireless Remote Condition Monitoring for Railway

In conclusion, remote condition monitoring on trackbed is a valuable tool for those responsible for railway assets seeking to

[Contact Us](#)



Contact Us

For datasheets, pricing, or custom fiber access solutions, please visit:
<https://frindel.es>