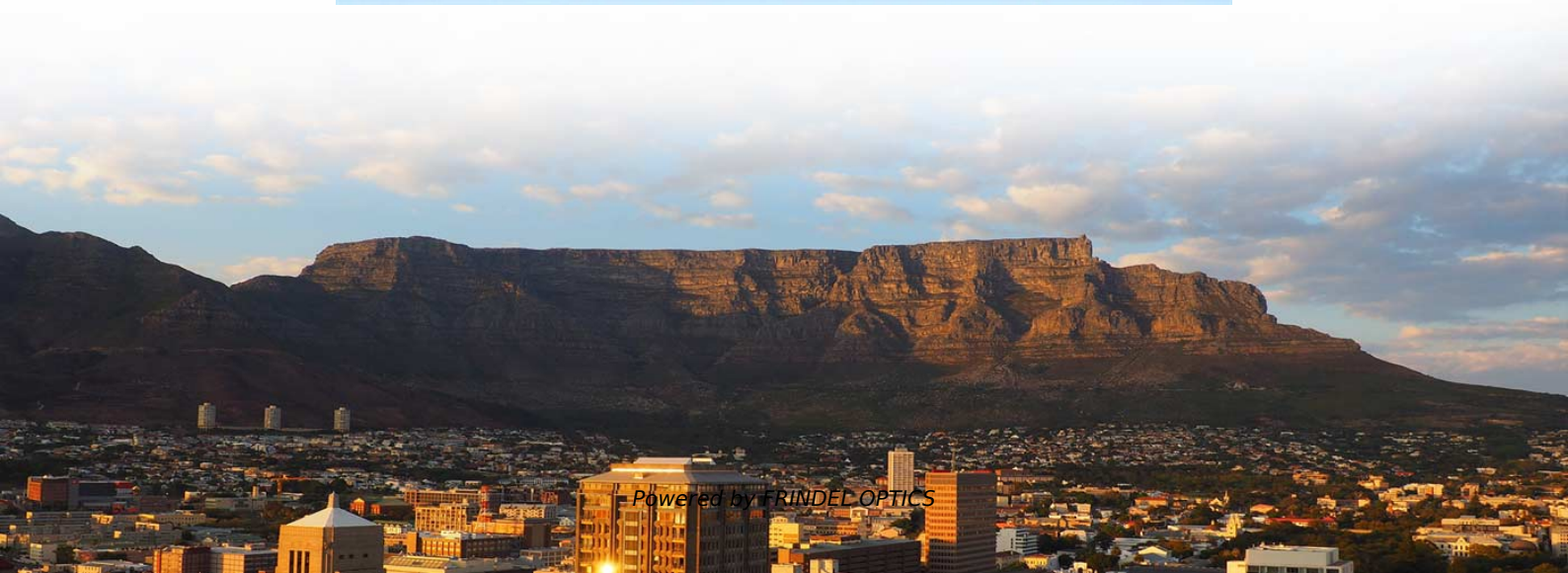


Core Switch Redundancy Example Analysis





Core Switch Redundancy Example Analysis



Redundant Core switches and Single Router Design

Hello Everyone, I am working on one design and need support for connectivity between two core switches and router. As shown in the attached

[Contact Us](#)

Redundancy concepts for hierarchical switch networks

In this tech paper, you will learn about the key protocols for building a redundant network and discover--based on five examples--how to design highly available three-tier or two-tier networks

[Contact Us](#)



Question About Core Redundancy Best Practice : r/networking

IDF closets on each floor with layer 2 switches, 12 strands of fiber ran between each floor and the basement. Our current headquarters core is a chassis switch (Cat 4507), with port-channels to other

[Contact Us](#)



Redundancy and Resiliency in Cisco Networks

This article explores the core concepts of redundancy and resiliency in Cisco networks, their significance, and how Cisco technologies enable



Redundant switch configuration for small network rack

This is the first time I'm attempting redundant switches. This is not a large setup with high volumes of traffic. We have some NAS servers and three

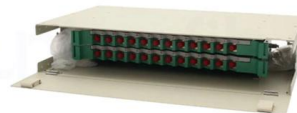
[Contact Us](#)



Industrial Ethernet

Industrial managed switches from B+B SmartWorx deliver redundant, ultra-fast recovery. With features such as IEEE 802.3x flow control, redundant

[Contact Us](#)



Help with core switch redundancy , Wired Networks

I'm currently doing a network infrastructure upgrade core switches, hypervisors and upgrade to 10G backbone between two main buildings. Site consists of two main buildings and a few

[Contact Us](#)





High Availability

Redundancy is a balance between too much redundancy, which increases complexity in the network structure, and too little redundancy, which creates single points of failure.

[Contact Us](#)



Core switch redundancy

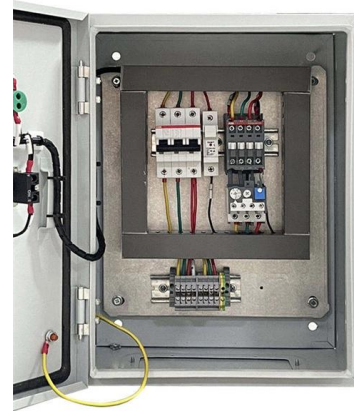
For example if you have a server directly terminating on 6500 switch you might have to move it to a distribution switch which in turn will be connected to two 6500's or else do NIC teaming

[Contact Us](#)

Understanding Switch Redundancy: Ensuring Network Reliability

In technical terms, switch redundancy involves implementing multiple physical switches in a network to ensure continuous network service even if one switch fails. This is critical in building a

[Contact Us](#)



redundant core best practice design

what is the best practice design of having a redundant core switch? the scenario is; 2 x 6500 2 edge switches in each floor thanks.

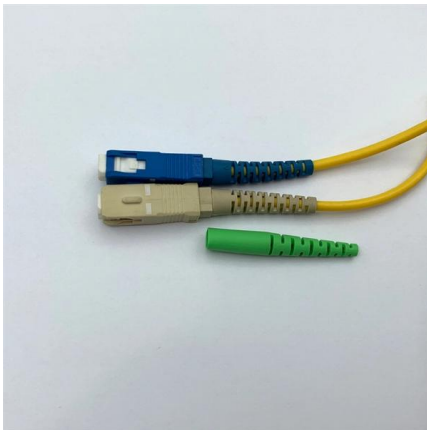
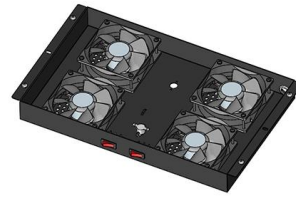
[Contact Us](#)



Designing a redundant switching infrastructure

Your core switches appear to be a core/distribution setup and you really want to separate your core switches so they aren't affected by spanning tree loops, yes they do happen. You could

[Contact Us](#)



Redundant Core

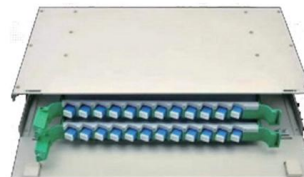
Can core A and core B do multi-chassis LAG? If so, make the links to the headend switches port-channels and enjoy redundancy, and doubled (more or less)

[Contact Us](#)

Understanding Switch Redundancy: Ensuring Network Reliability

Understanding Switch Redundancy: Ensuring Network Reliability Ever wondered how large networks ensure that they remain operational even when one part of the network hardware

[Contact Us](#)



Redundancy for Core Switch Stack : r/networking

Stacking at the core (regardless of vendor) is universally a bad idea. If they're not wanting to buy all new expensive gear, you have two options, both with advantages and disadvantages. Split the stack into

[Contact Us](#)



Core switch redundancy

Hi, A school with around 800 users having one core switch 6509-E sup-720 (inter-vlan routing) collapsed core design connected to - 30 layer 3 HP switches with 10G and 1G backup links -

[Contact Us](#)



Core Switches

For a collapsed core I love a 3750 stack. You can dual home your access layer switches to the different stack members, and bundle them into etherchannels. You can then do some load

[Contact Us](#)

Network Design Tips: Integrating Effective Switch Redundancy

Conclusion In conclusion, integrating effective switch redundancy in network design is not just about setting up alternating pathways for data travel. It involves a comprehensive approach that begins

[Contact Us](#)



News

Module Redundancy: Ensuring Reliability Redundancy is key to maintaining a robust network. Network devices, including core switches, should possess redundancy

[Contact Us](#)

Switch Redundancy and Management



Switch Redundancy and Management-Some links below may open a new browser window to display the document you selected.

[Contact Us](#)



The Complete Solutions Guide to a Redundant Switched

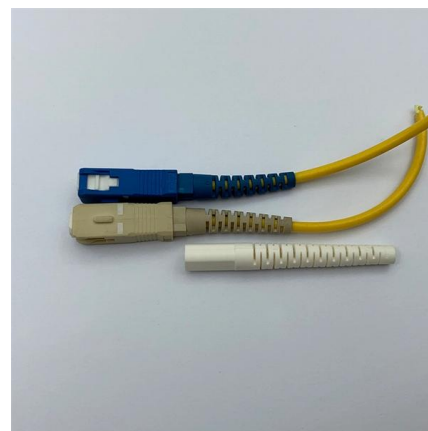
When a switch fails, the redundant one continues the switching responsibilities, providing unnoticeable network interruptions. The same applies to the physical

[Contact Us](#)

Redundanzkonzepte für hierarchische Switch-Netzwerke

In diesem Techpaper lernen Sie die wichtigsten Protokolle für ein redundantes Netzwerk kennen und sehen anhand von fünf Beispielen, wie Sie hochverfügbare Three-Tier- oder Two-Tier-Netzwerke mit

[Contact Us](#)



core switch redundancy

Hi, so we have tow core switches cisco catalyst 6807-XL, working as active active VSS, and we have some switches connected directly to the first one and others connected to the second

[Contact Us](#)



Solved: LAN/WAN Design questions: redundant network

Dear All, I have a growing network which inherited some reliability and scalability issues: (Example of my existing network) We have got POPs

[Contact Us](#)



Contact Us

For datasheets, pricing, or custom fiber access solutions, please visit:
<https://frindel.es>