

# Core Switch Installation Quota





## Core Switch Installation Quota

---



### SMB Network Design: Core vs. Distribution vs. Access Switches

Don't overspend on network hardware. Our expert guide explains core, distribution, and access switches so you can design the right network for your SMB.

[Contact Us](#)

### FS Community

Hier sollte eine Beschreibung angezeigt werden, diese Seite lässt dies jedoch nicht zu.

[Contact Us](#)



### [azure-docs/articles/hdinsight/quota-increase-request.md](#) at main

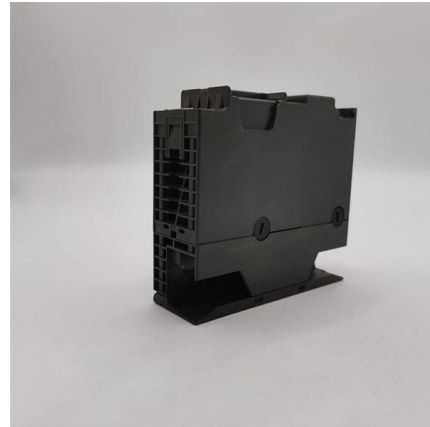
Requesting quota increases for Azure HDInsight CPU core quotas help to ensure that resource usage is distributed fairly between all customers in a particular Azure region. However, in certain cases, your

[Contact Us](#)

### Increase regional vCPU quotas

When you do so, the vCPU quotas in your subscription in other regions aren't increased. Only the vCPU quota limit in West Europe is increased

[Contact Us](#)



### **Core switch replacement**

1) Bring up the new core switch stack or chassis next to or above the current one. 2) Bring the bulk of basic configurations over and map interfaces properly and triple check

[Contact Us](#)



### **Prepare Switches , Validated Solution Guide**

Prepare switches for deployment in Aruba Central for building a Two-Tier Data Center. The L2 Two-Tier Data Center uses an MC-LAG core for

[Contact Us](#)



### **Understanding Core Switch: What It Is and How to**

In the realm of system networking, three key types of switches are frequently mentioned: access switches, aggregation switches, and core switches.

[Contact Us](#)



### **Microsoft SQL Server CPU configuration**



SQL Server uses all CPUs available from the operating system (if the per-processor core license is chosen). It also creates schedulers for each CPU to make best

[Contact Us](#)



### Core Switches: The Pillar of Network Infrastructure

Get a closer look at core switches: the nerve centers of network infrastructure that enhance performance and facilitate growth.

[Contact Us](#)

### Understanding the Core Switch: Key Differences and Uses

Explore the core switch's role as the backbone of your network. Discover key differences, uses, and insights into layer 3 core switch technology.

[Contact Us](#)



### Solved: Replace Core Switch

If you have a layer-2 trunk between the old core and the new core, you can migrate all your layer-2 switches to the new core and then have a maintenance window to move all layer-3 links

[Contact Us](#)



## Core Switch Specifications and Features

The document outlines specifications for a layer 3 core switch, including that it should support: -  
At least 800Gbps switching capacity and 250Mbps throughput for IPv4

[Contact Us](#)



## Cisco Catalyst 9600 Series Switches Hardware Installation Guide

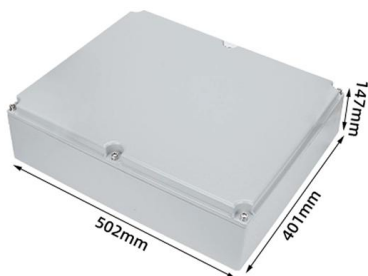
Browse options to purchase Cisco products, services, and software offerings. The documentation set for this product strives to use bias-free language.

[Contact Us](#)

## Azure Virtual Machine CPU Cores Quota

Per Azure subscription the default quota for virtual machine CPU cores is 20. To clarify because the relationship between virtual and physical CPU

[Contact Us](#)



## Core Switch vs. Distribution Switch vs. Access Switch

Owing to the importance of core switches, the quality and performance of the core network switches must be tested. To ensure that the switches can perform tasks

[Contact Us](#)



## Windows Server 2016/2019 Core licensing explained

How does Windows Server 2016 or 2019 licensing work? With examples of core licensing, we make your purchasing decision easier. Inform now.

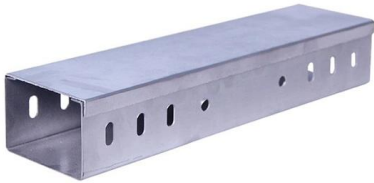
[Contact Us](#)



## Which core/distribution switch will fit for small-medium company?

Hi, I searching for core/distribution switch (any vendor) that fit to a small-medium company (300-400 users) for layer 2. Thanks for any help

[Contact Us](#)



## Planning for a Core Switch Deployment

I am planning for a core switch requirement is it should connect 2000 access ports in the distribution / access layer and scale in future. I have the option for using 9500-48 port ( in SVL )

[Contact Us](#)



## Request cores quota increase FAQs

This article provides answers for customer FAQs about their requests for quota increases in core or non-core CPUs. Why am I being asked to make a payment to request a cores quota increase? You may

[Contact Us](#)





## Prepare Switches , Validated Solution Guide

Review the Installation Guide before installing and deploying the switches. Carefully review requirements for power, cooling, and mounting to

[Contact Us](#)



## How to plan for a campus core switch refresh: Basic requirements

Growing traffic demands are putting more pressure on campus core Ethernet switches. Here in the first part of this series, we examine the steps needed to plan for a core switch upgrade.

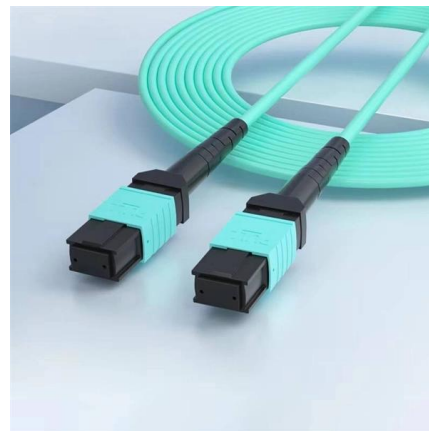
[Contact Us](#)



## Core Based Licensing Models Licensing Guidance

This page provides detailed information about Core Based Licensing Models and helps users understand key considerations, options, and scenarios related to this topic within Microsoft licensing

[Contact Us](#)



## Core switch replacement

I used an Aggregation switch, not as a core, but as a stand-alone for iSCSI traffic. It was purchased as a temporary switch because of equipment that required 10G connections prior to my

[Contact Us](#)



## Core switch replacement

My current core switches (2 x Aruba 3810M) are 6 years old and limited in their connection options. Adding in SFP+ modules will not give me enough connections for the servers,

[Contact Us](#)



## What Is a Core Switch in a Network?

Define the core switch--the central, high-speed backbone required for aggregating and routing massive volumes of enterprise network traffic.

[Contact Us](#)

## Introduction to Core Switch Configuration

A switch that functions as part of a router and operates at the third layer of the OSI network standard model, the network layer. The most important purpose of the layer 3 switch is to speed up the data

[Contact Us](#)



## Supply, Installation, and Configuration of Core Switch

Supply, Installation, and Configuration of Core Switch 1. TECHNICAL REQUIREMENT AND SCOPE OF WORKS Planning Review the existing network infrastructure and topology. Determine the required

[Contact Us](#)



## Understanding Azure Limits and Increases

Support incidents for Azure quota increases are free of charge! Please visit Azure Resource Manager vCPU quota increase requests documentation for

[Contact Us](#)



## Contact Us

---

For datasheets, pricing, or custom fiber access solutions, please visit:  
<https://frindel.es>