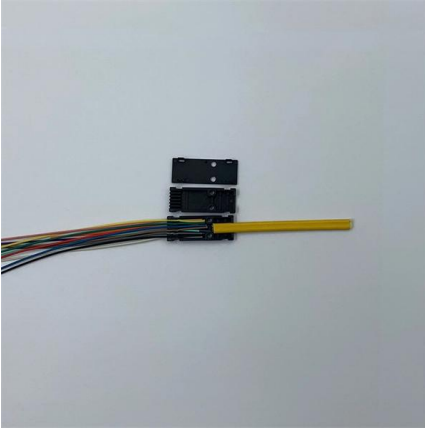


Core Gateways and Switches





Core Gateways and Switches



Was ist ein Core-Switch? Funktionen und Bedeutung

Erfahren Sie, was ein Core-Switch ist und wie er die zentrale Rolle in einem Unternehmensnetzwerk spielt. Unsere Erklärung bietet Einblicke in die

[Contact Us](#)

Core Switch vs Access Switch , Definitions and Key Differences

Core Switch vs Access Switch The core switch is used in the center of your network, while an access switch is placed on its edge. The main difference between these two kinds of hardware is



[Contact Us](#)



Features and Applications of Core Switches

Core Switches support various routing protocols, such as OSPF (Open Shortest Path First) and BGP (Border Gateway Protocol), enabling intelligent selection of optimal paths for data

[Contact Us](#)

Core Switch Default Gateway

Probably a stupid question but when moving from a flat network to a tagged VLAN network, I know the core switch needs to have a default gateway of our firewall but what VLAN

[Contact Us](#)



Gateways on Core Switch vs Firewall : r/networking

Gateways on Core Switch vs Firewall I'm struggling with some design options for a network redesign I'm planning at my company. The background: Today I'm running a relatively simple network topology.

[Contact Us](#)



Gateway of Last Resort with OSPF and two Core Switches

I have a network configured as a ring, where in the receiving location I have two core switches working with HSRP, if one fails the other one takes over. In this location I have an edge

[Contact Us](#)



Difference between Switch and Gateway

The roles of switches and gateways in networking are different. In a single network, the switch will be responsible for communication management, ensuring that data transmitted between

[Contact Us](#)

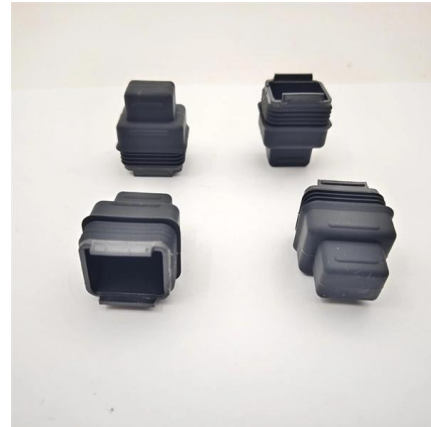
Must Gateways Be Configured at the Core?



A Complete

Will using the core as a gateway overburden it? Is it secure to place gateways at the access layer? After reading this article, you'll be able to determine

[Contact Us](#)



What is a Core Switch , Functions and Difference over Normal Switch

What is a core switch and how it works? This article builds the basics of this kind of switch for the ones who don't know anything about it. What is a Core Switch? It is a powerful

[Contact Us](#)

Core Switch

Core switches are defined as high-capacity switches located at the top of a cloud data center network, connecting aggregation switches and providing interfaces to wide area networks (WANs). They are

[Contact Us](#)



Gateways on Core Switch vs Firewall : r/networking

In data centers, storage is isolated from other data traffic with dedicated switches (and dedicated NICs on hosts that use storage). If you must use the same set of switches/firewall for storage for users

[Contact Us](#)

What is the best practices for Users



Getaway! Core Switch or Firewall

Core Switch Default Gateway Networking discussion, general-networking 8 835 November 30, 2015 Internet Gateway Question Networking general-networking, question 8 165

[Contact Us](#)



Difference between Switch and Gateway

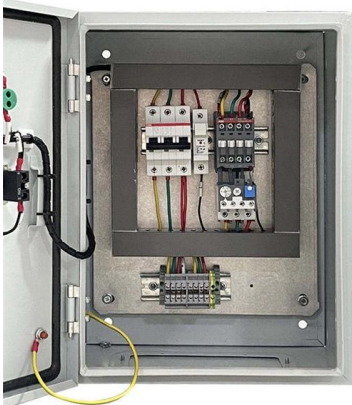
Conclusion The roles of switches and gateways in networking are different. In a single network, the switch will be responsible for communication management, ensuring that data

[Contact Us](#)

SMB Network Design: Core vs. Distribution vs. Access Switches

Don't overspend on network hardware. Our expert guide explains core, distribution, and access switches so you can design the right network for your SMB.

[Contact Us](#)



Core Switch vs. Distribution Switch vs. Access Switch

Comprehensive guide to Core, Distribution, and Access Switches. Roles in the network and important parameters explained.

[Contact Us](#)



Standalone AC Solution: Core Switches and ACs Function as the Gateways

Standalone AC Solution: Core Switches and ACs Function as the Gateways for Wired and Wireless Users Respectively Networking Requirements Core switches set up a CSS that functions as the core

[Contact Us](#)



What is Core Switch and How to Choose-QSFPTEK

Discover what a core switch is and learn how to choose the right one for your network. Explore key features in selecting a core layer switch. Make

[Contact Us](#)

What Is a Core Switch in a Network?

Define the core switch--the central, high-speed backbone required for aggregating and routing massive volumes of enterprise network traffic.

[Contact Us](#)



What Is a Core Switch?

A core switch is the backbone of a large-scale network, designed to handle massive volumes of traffic with ultra-low latency and maximum reliability. Sitting at the top of the hierarchical model, core

[Contact Us](#)



Standalone AC Solution: Core Switches and ACs Function as the

Aggregation switches set up stacks to implement device-level backup and increase the interface density and forwarding bandwidth. In this example, core switches and standalone ACs function as the

[Contact Us](#)

LoRa handheld portable base station



Core Switch Vs Distribution Switch Vs Access

What Is Core Switch? A core switch is not a certain kind of network switch. It refers to the data switch that is positioned at the backbone or physical core of a network.

[Contact Us](#)

Campus LAN Core and Distribution Switches

Cisco Catalyst and Meraki Campus LAN core and distribution switches are scalable, secure network switches with exceptional intelligence.

[Contact Us](#)



What Is a Network Gateway: Types, Functions and Key

Gateway Functions and Key Roles Network gateways perform several critical functions that enable the seamless operation of our interconnected digital world.

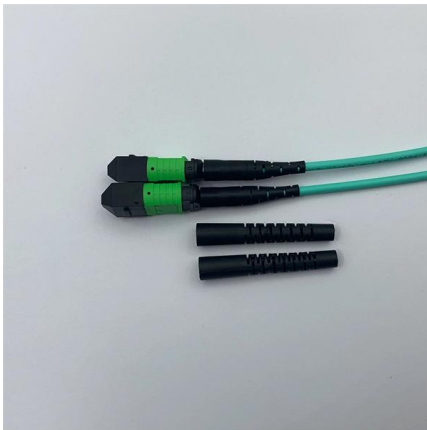
[Contact Us](#)



Understanding Core Switch: What It Is and How to

By taking these considerations into account, you can make an informed decision when selecting a core switch that aligns with your network's demands

[Contact Us](#)



What is a Core Switch , Functions and Difference over Normal Switch

The core-type layer is made up of multiple core switches that operate at high speeds. Network aggregation switches, on the other hand, connect many networks over a single link.

[Contact Us](#)

Core, Aggregation, or Access Switches? Choose the

Discover the crucial differences between core, aggregation, and access switches. Find out which type can best transform your network's

[Contact Us](#)



Core Switches: The Pillar of Network Infrastructure

Get a closer look at core switches: the nerve centers of network infrastructure that enhance performance and facilitate growth.

[Contact Us](#)



Core Switch Explained: Key Functions and Benefits

Discover what a Core Switch is, its pivotal role in network architecture, and how it boosts performance and reliability in your data infrastructure.

[Contact Us](#)



Contact Us

For datasheets, pricing, or custom fiber access solutions, please visit:
<https://frindel.es>