

Construction of parallel cable tray elbows





Construction of parallel cable tray elbows



Installation of Cable Tray, Trunking And Accessories

Before beginning installation, be sure that the method statement for installation of cable tray, trunking, and accessories is approved by the project and construction manager before the

[Contact Us](#)

100+ Essential Questions Answered About Cable Trays:

Discover over 100 expert answers about cable trays, covering key topics like material selection, load capacity, installation methods, and maintenance.

[Contact Us](#)



Cable Tray Installation and Cable Handling Method

Cable Tray Installation Method Statement 1. Cable Tray Installation Cable trays should be installed in accordance with the latest revision of the NEC, NEMA VE

[Contact Us](#)

Cable Tray Systems: Requirements and Best Practices

Comprehensive guide to cable tray systems requirements: tray types, materials, loading, supports, bonding, routing, and best practices for safe electrical cable management.



12-SDMS-06

4 Design and Construction Requirements 4.1
General 4.1.1 Metallic cable trays shall
specification in all respects. 4.1.2 The Metallic
cable trays shall be manufactured in accordance
with NEMA VE-1

[Contact Us](#)



Technical Guidelines for Cable Tray Installation and

Cable tray installation must comply with specific
technical standards to ensure electrical safety,
system reliability, and long-term maintainability.
This document

[Contact Us](#)



12-SDMS-06

Cable tray sections, fittings and connected
raceways shall be bonded properly using bonding
jumper at both ends. The bonding jumper shall
be bare copper conductor of 50 mm² size and
400 mm long.

[Contact Us](#)

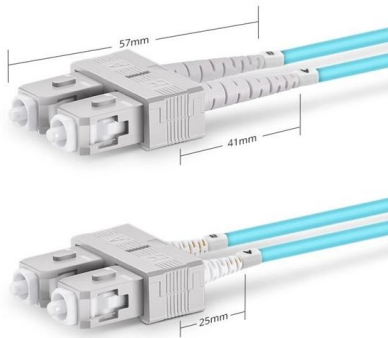




How to Install Cable Tray: A Comprehensive Guide to Different Cable

Welcome to our step-by-step guide on installing cable trays! In this video, we'll explore the different types of cable trays available and provide detailed instructions for their installation.

[Contact Us](#)



Duplex SC UPC

CABLE TRAYS

Vari-cleat cable cleats are available for trefoil single and bundled cable applications where moderate levels of short circuit withstand are required. The unique patented compact design allows the

[Contact Us](#)

Guide to cable support systems

Four different mesh cable tray types are available, depending on the requirements, area of application and cable quantity. The innovative Magic connection system of the GRM and G-GRM mesh cable

[Contact Us](#)



Full cable tray systems specification document

B. Cable tray systems are defined to include, but are not limited to straight sections of [ladder type] [trough type] [solid bottom type] [channel type] cable trays, bends, tees, elbows, drop-outs, supports

[Contact Us](#)

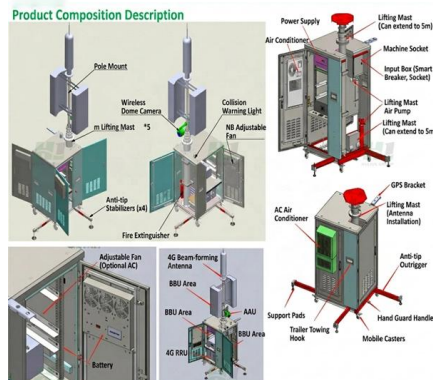




Complete cable tray manual for electrical engineers and

The final drawings for a cable tray wiring system may be completed and sent out for bid or construction more quickly than for a conduit wiring system. Cable trays

[Contact Us](#)



Core Principles for Electrical and Instrumentation Cable

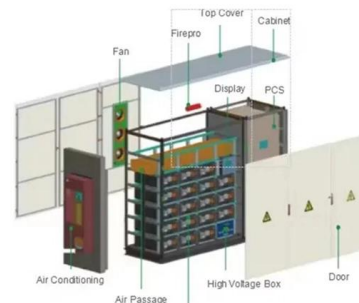
In industrial settings, electrical and instrumentation (E& I) cable trays or bridge racks play a critical role in organizing and supporting power, control, and signal cables

[Contact Us](#)

Microsoft Word

Metallic cable trays shall be permitted to be used as equipment grounding conductors where continuous maintenance and supervision ensure that qualified persons service the installed cable tray system

[Contact Us](#)



Method Statement for the Installation of Cable Tray, Trunking, and

Mark the location of installation and install the approved cable tray, trunking or ladder as per specifications, shop drawings and site requirements for individual cases like slab or wall etc.

[Contact Us](#)





Best Practice Guide to Cable Ladder and Cable Tray Systems

This guide covers cable ladder systems, cable tray systems, channel support systems and associated supports intended for the support and accommodation of cables and possibly other electrical

[Contact Us](#)



Cable Tray Technical Guide A practical guide to product selection and

In designing supports for a cable tray system, consideration should be given to the loads associated with future cable additions and any additional loading that may be applied to the cable tray system (e.g.,

[Contact Us](#)

Practices for grounding and bonding of cable trays

A bare copper equipment grounding conductor should not be placed in an aluminum cable tray due to the potential for electrolytic corrosion of the aluminum cable tray in a moist environment. For such

[Contact Us](#)



Cable Tray Installation CAD Blocks , DWG Electrical

Download a comprehensive set of Cable Tray Installation CAD Blocks in DWG format, ideal for electrical engineers, MEP designers, and industrial layout

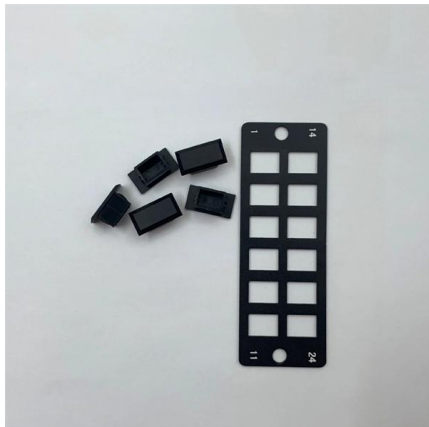
[Contact Us](#)



90° Vertical Elbow , Cable Tray Systems , PUPCO

Discover our 90° Vertical Elbow for cable tray systems. Contact us today for availabilities and receive a quote. Fast shipping guaranteed

[Contact Us](#)



Elbow for electrical supply cables , wire channels , trays , metal

Metal elbows for cable trays are an essential component in electrical installations, ensuring safety, durability, and aesthetic appeal. They are an excellent choice for industrial, commercial, and

[Contact Us](#)

GUIDE CABLE TRAYS TECHNICAL

NEMA VE 1-2017 Specifies requirements for metal cable trays and associated fittings designed for use in accordance with the rules of Canadian Electrical Code, Part I and the National Electrical Code®

[Contact Us](#)



HOW TO FABRICATE (INSIDE ELBOW)AND(OUTSIDE ELBOW)

How to bend 90 degree of cable tray accurate to joint and support with 22.5 degree offset o HOW TO BEND 90 DEGREE OF A CABLE TRAY AC

[Contact Us](#)

Cable tray manual



These documents: ANSI/NEMA VE-1, Metal Cable Tray Systems; NEMA VE-2, Cable Tray Installation Guidelines; and NEMA FG-1, Non Metallic Cable Tray Systems, are an excellent industry resource in

[Contact Us](#)



Annex I

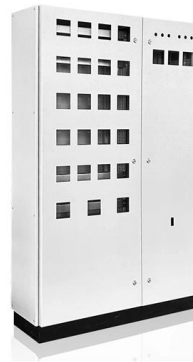
This document deals with cables trays, cables and connector installation and segregation, cable trays earthing and E.M.C. directives. These rules shall be applied in the cabling engineering workflow for

[Contact Us](#)

METHOD STATEMENT FOR CABLE TRAY INSTALLATION

3.4 Inspection and Test Plan/ Method Statement
3.4.1 SATIP-P-104-03 Cable Tray Fittings and Accessories
3.5 Latest Revision of the following Documents shall be used
3.5.1 Vendor Drawing

[Contact Us](#)



CABLE TRAY SYSTEMS GUIDE

The Ladder Tray features light, rugged, tubular steel construction. It is designed for mechanical support and strain relief in long runs of cable and creates a smooth gradual bend for cable.

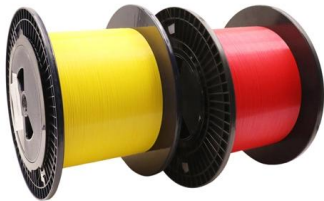
[Contact Us](#)



Cable Tray Installation and Cable Handling Method

Efficient cable tray installation and proper cable handling are critical for ensuring the reliability and safety of electrical systems. Adherence to these guidelines is

[Contact Us](#)



45° Vertical Elbow , Cable Tray Systems , PUPCO

Discover our 45° Vertical Elbow for cable tray systems. Seamlessly transition between sections and fittings, reducing tray width. Contact us today!

[Contact Us](#)

Vertical Cable Support Elbow , Ladder Trays , Cable Tray and Reels

The aluminum I-beam design of ITray is perfect for industrial installations with large diameter cables in long span situations, minimizing total tray width and creating a smooth transition between straight

[Contact Us](#)



Contact Us

For datasheets, pricing, or custom fiber access solutions, please visit:
<https://frindel.es>