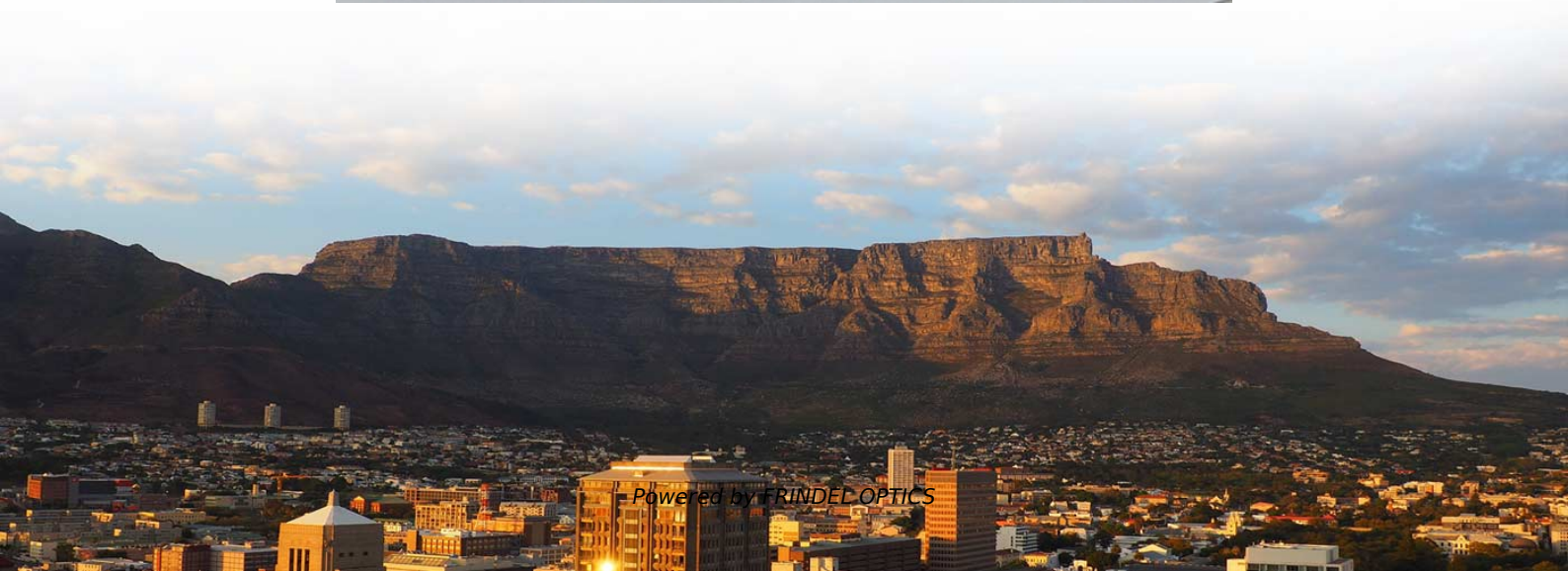


Construction of 576-core optical fiber junction box





Construction of 576-core optical fiber junction box



FTTB Dome 576core Optical Fiber Junction Box 72 tray

576 core outdoor waterproof dome optical fiber junction box wall/pole mounting has 16 circular cable entry hole and one oval hole, adopt the heat shrinkable seal, Can

[Contact Us](#)



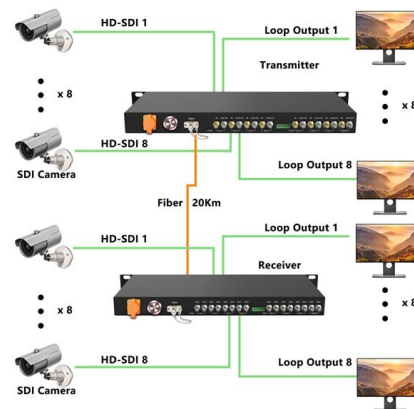
Fiber Distribution Terminal 576(Splitter Type)

Fiber Distribution Terminal 576(Splitter Type) GRANDWAY Functions This FDT is used for connecting, allocation and dispatching of communication optical cables to each optical distribution

High Quality FTTH Outdoor Fiber Optic Cross Connect

Fiber Cabinet is an outdoor optical device designed specifically for outdoor fiber optic access networks, which enables the connection, splicing, storage, and

[Contact Us](#)



Fiber Splice Dome Closure

Fiber splice dome enclosure includes 6 trays and accommodates up to 576 fiber cables. Rated IP68 for protection from dust and water up to

[Contact Us](#)



96/144/288/576 Core Outdoor FTTH Waterproof Optical Fiber Cross

1. fiber optic cross connect cabinet is mainly used for connection, distribution and dispatching of communication optical cables from offices to optical distribution nodes, providing a safe, reliable and

[Contact Us](#)



All You Need To Know About Fiber Termination Boxes:

Source In this blog, we will discuss the two types of fiber optic cables and the role of a simple yet essential piece of equipment in the fiber laying

[Contact Us](#)



Design Guide

Design Guide In addition to our wide range of catalog (ASAP) Fiber Optic Cable Assemblies, Glenair offers turnkey, build-to-print fiber optic cable harnesses, breakout, and junction box assemblies. This

[Contact Us](#)

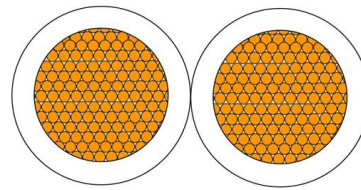




Fiber Optic Cable Joint Box

Fiber Optic Cable Joint Box Riteoptic fiber optic cable joint box provides optical, sealing and mechanical strength of the continuity between adjacent fiber optic

[Contact Us](#)



576-Core Double-Sided (1450x750x540) SMC Fiber Optic Cable

ODC-576D adopts a traditional double-sided enclosure structure, suitable for telecom and mobile operator standard internal designs. Side panels and door panels are available in 8 mm thickened or

[Contact Us](#)

OPGW Cable Joint Box Specifications , PDF

The technical specification outlines requirements for an optical fiber ground wire cable joint enclosure used for splicing 24 core fiber optic cables. The splicing

[Contact Us](#)



576 cores connectorized fully Loaded cabinet

Cabinet Pedestal / wall mounted connectorized 576 cores Discover our high-capacity Connectorized Fiber Optic Cabinet boasting 576 cores. Engineered to provide

[Contact Us](#)

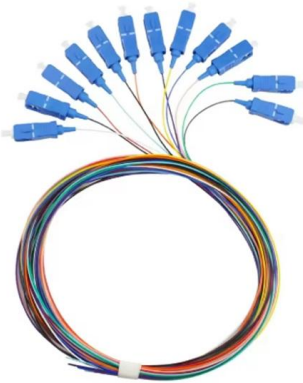




How does the 576-core optical junction box smc outdoor floor

576-core optical junction box smc outdoor floor-standing 1152 fully equipped with 288 cores three and four networks combined into one 144-core optical cable junction box has become an important part of

[Contact Us](#)



Fiber Optic Splice Closure 576core J111M

The Model J1 1 1 M-576 FOSC is mainly used for optical fiber connection and protection. This kind of box is suitable for the connection of overhead, pipe and

[Contact Us](#)

Fiber Splice Dome Closure

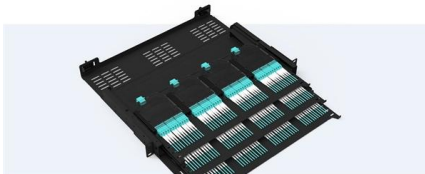
This fiber splicing dome enclosure comes with six splice trays that accommodate up to 96 unterminated cables to give you more

[Contact Us](#)



Pre-Terminated Patch Panel

- Standard 19" width
- Max 144 fibers in 1U
- Ultra-High Density Ready



Dual-sid, easy install & maintain



Lightweight ABS 400 Lexanite



Premium sheet metal with multi coating

TW-CBSMC-576B 576Cores Floor Mounted SMC Fiber Optic Cabinet FDH Fiber

Fiber Optic Cross Connect Cabinet is use for outdoor cable access network, backbone cable and indoor cable arrangement. it with high-capacity, high-density fiber distribution tray, suitable for the

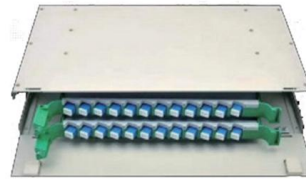
[Contact Us](#)



ENCLOSURE SPLICE DOME 48,120, 288 AND 576 FIBER

E SPLICE DOME 48,120, 288 AND 576 FIBER Scope Dome fiber splice enclosure is an equipment that used for opt. cal fiber cable splicing, joint and protection. It is waterproof and dust proof and suitable

[Contact Us](#)



FISR576RZ Technical Data Sheet

Product Description FX Indoor, Flexible Ribbon, OS2, 576 Fibers, OFNR, Sub-Units 7.0 mm (144F), Yellow Jacket

[Contact Us](#)

576 Core Horizontal Optical Fiber Splice Enclosure 3 Inlet 3 Fiber

576 Core Horizontal Optical Fiber Splice Enclosure 3 Inlet 3 Fiber Repair Junction Box OFC Fibre Optic Joint Closure Equipment No reviews yet certified Cixi Yaxun Communication Equipment Co., Ltd.

[Contact Us](#)



From standard 1U to 8U sizes to fully customized Non-standard enclosures.



OPTICAL FIBRE CABLE JOINTING

Fiber optic communication systems often use semiconductor optical sources such as Light emitting diodes (LEDs) and semiconductor lasers. Some of the advantages are: Compact in size, High

[Contact Us](#)



576 FDH Fiber Optic Junction Box, IP65 Outdoor

Quality Fiber Optic Distribution Box manufacturers & exporter - buy 576 FDH Fiber Optic Junction Box, IP65 Outdoor Optical Cross Connection Cabinet from China

[Contact Us](#)



High Quality FTTH Outdoor Fiber Optic Cross Connect

This high - quality outdoor fiber optic cross - connect cabinet is designed for FTTH applications. With core options ranging from 48 to 720, it offers flexibility to meet

[Contact Us](#)

576-core optical cable junction box/optical junction box function

576-core optical cable junction box is mainly used for the connection, dispatching and distribution of the trunk optical cable to each optical branch point and 576-core optical cable junction box/optical

[Contact Us](#)



576 FDH Fiber Optic Junction Box, IP65 Outdoor Optical Cross

China 576 FDH Fiber Optic Junction Box, IP65 Outdoor Optical Cross Connection Cabinet, Find details about China Fiber Optic Distribution Box from 576 FDH Fiber Optic Junction Box, IP65 Outdoor

[Contact Us](#)



576 Cores Fiber Cross Connect, Optical Fiber Cabinet

SJ-OCC-SS-576-1 576 cores fiber cross-connect, optical fiber cabinet is the perfect solution for your home, business or office. Benefits of fiber cross connection

[Contact Us](#)



576C Fiber Distribution Terminal (FDT)

China factory anti-theft 576cores Floor standing SMC 1450*755*543 Double Doors fiber distribution terminal(FDT).

[Contact Us](#)

576/720 Cores Optical Fiber ODF

This document describes an indoor FTTH rack mounted optical fiber distribution frame. It can integrate fiber splicing, termination, adapters and connectors in a

[Contact Us](#)



Mid-span 576 Cores IP68 Dome Fiber Splice Closure

In terms of construction, this dome joint closure is made from high-strength PP plastic. This material ensures durability and longevity even when exposed to

[Contact Us](#)



576/720 Cores Optical Fiber ODF , PDF , Optical Fiber

This document describes an indoor FTTH rack mounted optical fiber distribution frame. It can integrate fiber splicing, termination, adapters and connectors in a

[Contact Us](#)



576 Cores Fiber Optical Connect Cabinet

Description Introduction 576 cores fiber optical connection cabinet can be applied into the connection and dispatch of the optical cable and fiber in the optical

[Contact Us](#)

Contact Us

For datasheets, pricing, or custom fiber access solutions, please visit:
<https://frindel.es>