

# **Connection between cable tray support and main cable tray**





## Connection between cable tray support and main cable tray

---



### **Cable Tray Technical Guide A practical guide to product selection and**

In designing supports for a cable tray system, consideration should be given to the loads associated with future cable additions and any additional loading that may be applied to the cable tray system (e.g.,

[Contact Us](#)

### **INSTALLATION GUIDE**

Where metal supports for metal cable trays are bolted to the tray and are in good electrical contact with the grounded structural metal frame of a building, the tray shall be deemed to be bonded to ground.

[Contact Us](#)



### **Cable Tray Installation**

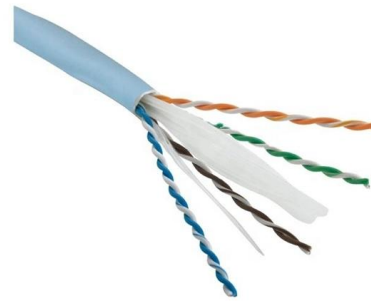
Learn everything about cable tray installation with our complete guide. Discover types, steps, and safety tips for efficient electrical cable management.

[Contact Us](#)



### **100+ Essential Questions Answered About Cable Trays:**

Discover over 100 expert answers about cable trays, covering key topics like material selection, load capacity, installation methods, and maintenance.



Ordering information

NO.	1	2	3	4	5	6
Model	SP2802	SP2802	SP2804	SP2801	SP2802	SP2804
Product name	Patch Panel	Patch Panel	Patch Panel	Patch Panel	Patch Panel	Patch Panel
Illustration						
HU	1	2	4	1	2	4
Maximum number of ports	144	288	576	144	288	576
Product size (including modules and cables)	482.0*102*74 mm	482.0*102*178 mm	482.0*102*177 mm	482.0*102*74 mm	482.0*102*178 mm	482.0*102*177 mm
Standard color code	RAL9005	RAL9005	RAL9005	RAL9005	RAL9005	RAL9005
Inventory	2	2	2	2	2	2

### Cable Tray Installation Guidelines , PDF , Galvanization

This document provides details on installing cable trays and their support systems. It includes diagrams showing how to mount cable trays on walls using pre

[Contact Us](#)

### Cable tray manual

The distance between supports affects the tray strength exponentially; therefore the strength of the cable tray system selected should be designed around the specific support span chosen for that run.

[Contact Us](#)



### Best practice guide to cable ladder and cable tray

Cable ladder and cable tray systems The following recommendations are intended to be a practical guide to ensure the safe and proper installation of

[Contact Us](#)



## Cable Tray Systems: Requirements and Best Practices

Comprehensive guide to cable tray systems requirements: tray types, materials, loading, supports, bonding, routing, and best practices for safe electrical cable management.

[Contact Us](#)



## Best Practice Guide to Cable Ladder and Cable Tray Systems

This publication is intended as a practical guide for the proper and safe\* installation of cable ladder systems, cable tray systems, channel support systems and associated supports.

[Contact Us](#)

## Types of Cable Trays: Ladder, Perforated, Basket, Solid

Cable trays support insulated electrical cables in industrial and commercial settings. There are several types of cable trays, including ladder,

[Contact Us](#)



## Annex I

The local trays indicate the support of one or several cables (in limited number) from the main cable tray to the electrical equipment to connect (around 5 m). These local trays have generally a width of 50 or

[Contact Us](#)



## B-Line series Cable Tray Design Considerations

As an industry leader in cable tray, Eaton offers one of the widest ranges of cable management solutions available in the market today with its B-Line series portfolio. With unmatched quality and service, we

[Contact Us](#)



## A Guide to Installing and Supporting Electrical Cable Trays

A professional guide to installing electrical cable tray systems per NEC Article 392. Covers support, securing cables, and fill calculations.

[Contact Us](#)

## CABLE TRAY SYSTEMS GUIDE

Some applications may require the cable tray to support the weight of a single, dead object in addition to the cable loads. Specifications typically require this to be applied at the midpoint of the span between

[Contact Us](#)



## Connecting Cable Trays: Your Guide to Secure and

Learn common methods for connecting cable trays safely and efficiently. Our guide covers splice plates, quick-connects, and key tips for secure

[Contact Us](#)



## Cable tray manual

Some of these criteria include the required load that the cable tray must support, the distance between the cable tray supports, and ease of handling and installation.

[Contact Us](#)



## Cable Tray Design, Layout, and Overall Wiring Planning

Learn about effective Cable Tray Design and Layout for electrical systems. Our guide covers planning, material choice, safety,

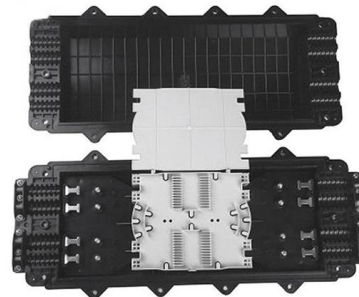
[Contact Us](#)



## How to install Cable Trays - Best Guide in 2026

Step-by-step on-site guide: learn how to plan, mark, support, and install cable trays correctly, from shop drawing approval to final checks.

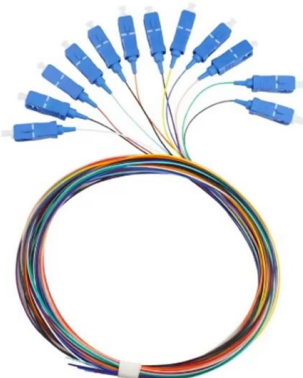
[Contact Us](#)



## Cable Tray Installation and Cable Handling Method

3. Cable Tray Support Locations Cable tray supports should be strategically positioned so that connectors between horizontal straight sections of the tray fall

[Contact Us](#)





## Best practice guide to cable ladder and cable tray

The following recommendations are intended to be a practical

[Contact Us](#)



## Method Statement installation of Cable Trays and Ladders

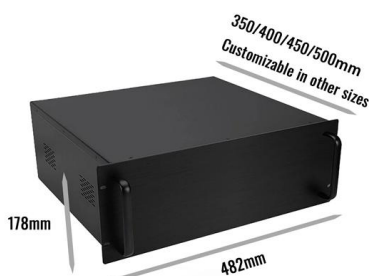
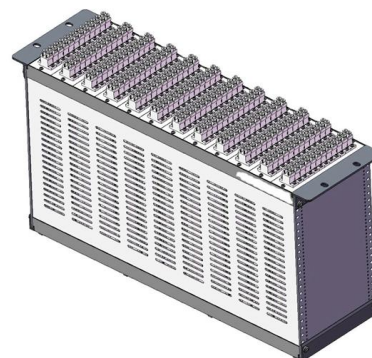
This method statement covers the site installation of the cable tray & ladders and the requirements of checks to be carried out.

[Contact Us](#)

## Cable Tray Technical Guide A practical guide to product selection and

Cable tray length is selected based on the load to be supported, the distance between the supports (also referred to as the span), and handling and installation constraints.

[Contact Us](#)



## Beama Best Practice Guide , Installation Of The System , Cable

The following recommendations are intended to be a practical guide to ensure the safe and proper installation of cable ladder and cable tray systems and channel support and other support systems.

[Contact Us](#)

## Best Practice Guide to Cable Ladder and Cable Tray Systems



The fixings used to connect the cable ladder and cable tray support systems to the primary supports also need to be checked to ensure that they are strong enough.

[Contact Us](#)



### **A Guide to Installing and Supporting Electrical Cable Trays**

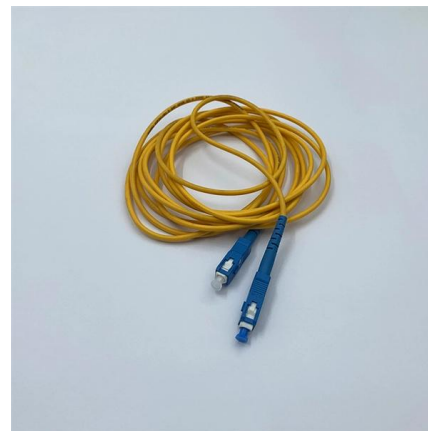
This guide covers the critical steps, from selecting the right electrical cable tray and performing accurate cable fill calculations to managing a safe cable pull through

[Contact Us](#)

### **Complete cable tray manual for electrical engineers and**

Complete cable tray manual for electrical engineers and designers (on photo: power cable management ladder tray systems assembled aluminum cable tray ladder)

[Contact Us](#)



## **Contact Us**

---

For datasheets, pricing, or custom fiber access solutions, please visit:  
<https://frindel.es>