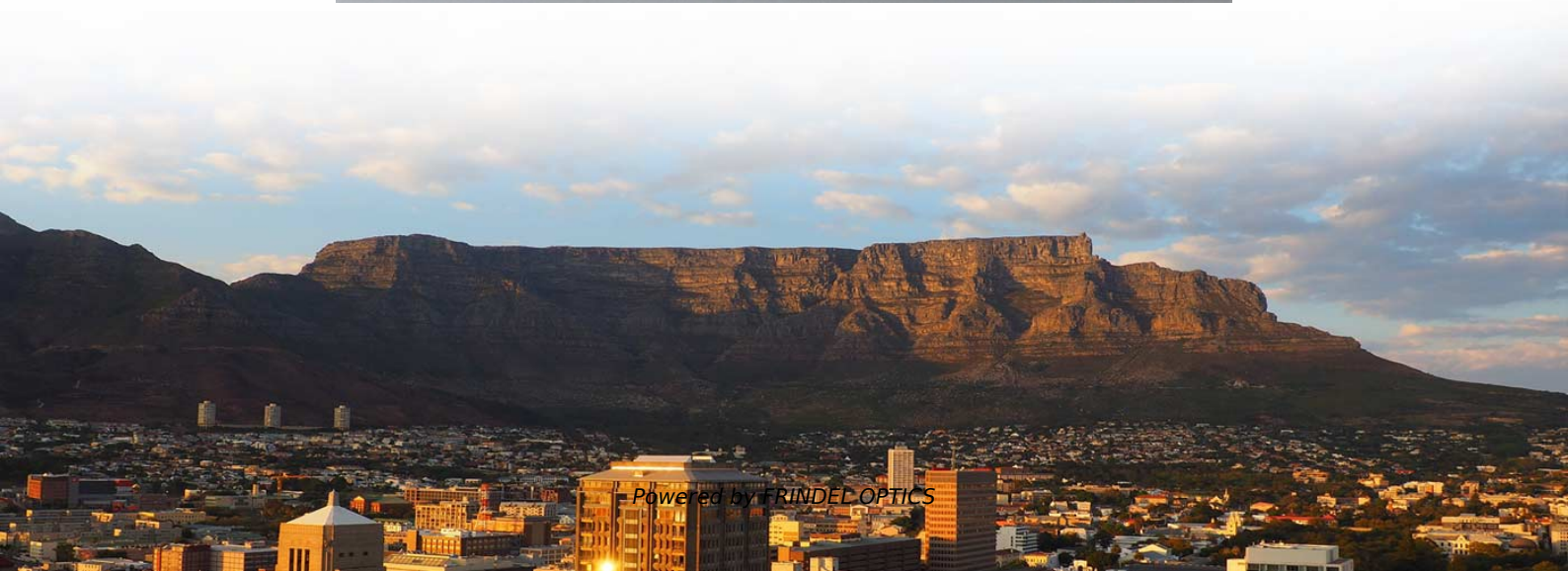


Congo bend-insensitive fiber optic cable 2 cores





Congo bend-insensitive fiber optic cable 2 cores



Bend-Insensitive Fiber - What Is It? - trueCABLE

Discover the benefits of bend-insensitive fiber for reducing stress and bending loss in optical fiber. Learn about its design, applications, and

[Contact Us](#)

OM3 50/125 Multimode Bulk Fiber Optic Distribution Cable

Meet GR-20-CORE & ICEA S-104-696 water penetration requirements. Ensure cable damage contained to repairable length. Jacket resists fungus. Ideal for humid climate & underground run. UV stabilizer

[Contact Us](#)



Top 20 Fiber Optic Cable Manufacturers in the World

Corning Inc. Founded in 1851 and headquartered in the U.S., Corning is a pioneer in fiber optic technology, holding approximately 10.4% of the global

[Contact Us](#)

Ukraine Fiber Optic Spool Prices Jump More Than Eightfold As AI

Global fiber optic prices are in a supply crunch driven by two colliding demand sources: AI data center buildouts consuming bend-insensitive fiber at industrial scale, and Russian and Ukrainian



Bend-Insensitive Fiber: What It Is And Why It Matters

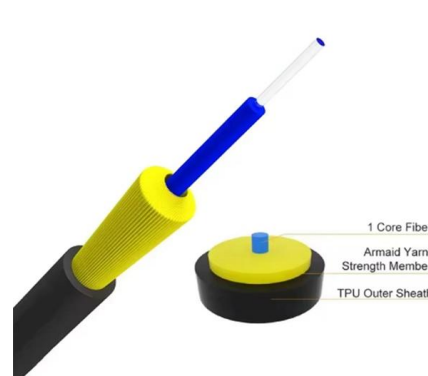
Every time a fiber optic cable snakes around a sharp corner or squeezes into a cable tray, it risks losing light--and with that, signal quality. Modern networks, however,

[Contact Us](#)

Fiber Optic Bend Radius Standards 2025 - Topfiberbox

Follow 2025 fiber optic bend radius standards: 20x cable diameter during installation, 10x after, to prevent signal loss and cable damage.

[Contact Us](#)



ClearCurve Single-mode Optical Fibers , Bend

Corning's ClearCurve bend-improved single-mode fibers provide lower cost, superior installation speed and efficiency, and greater successful installations.

[Contact Us](#)



Fiber Optic Cable vs Patch Cord vs Pigtail - Complete

When you build or upgrade a fiber network, the same four words pop up everywhere-- fiber optic (bare fiber), pigtail, patch cord, optical cable. They're

[Contact Us](#)



FlightLinx® PLUS Fiber Optic Cable - Single-mode Bend-Insensitive

FlightLinx® PLUS Fiber Optic Cable - Single-mode Bend-Insensitive Simplex from OFS FIBER CONTACT supplier now!

[Contact Us](#)



Fiber Optic Issues: Troubleshooting & Prevention Tips

Solve common fiber optic network problems--attenuation, damage, connector issues. Learn troubleshooting steps, tools, and prevention to ensure reliable

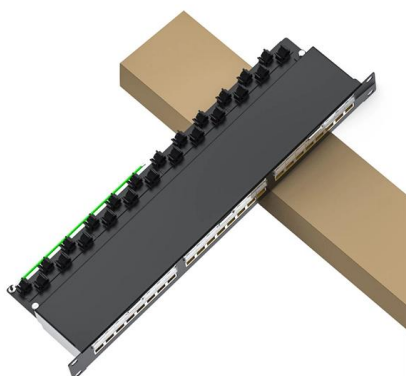
[Contact Us](#)



Bend Insensitive Fiber, Bend Insensitive Fiber Optic Cables

We provide bend-resistant fiber optic cables and fiber optic connectors, patch cord, cable assemblies, optical modules and high-speed cables that are 100%

[Contact Us](#)





Bend-Insensitive Fiber Patch Cords Explained: Minimum

A bend insensitive fiber optic cable is designed for tight spaces, FTTx networks, and data centers, keeping performance stable even in sharp turns.

[Contact Us](#)



Recommendation ITU-T G.657 (08/2024) -

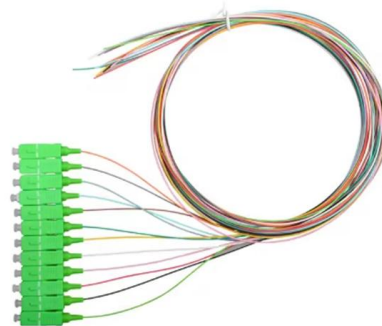
This document outlines the specifications for ITU-T G.657 optical fibers, which are designed for improved bending loss performance compared to ITU-T G.652

[Contact Us](#)

Fiber Optic Patch Cable, Fiber Optic Patchcord US Conec MTP-MTP

Fiber Optic Patch Cable, Fiber Optic Patchcord US Conec MTP-MTP M to M 12 Cores Type B Single Mode OS2 Corning G657A1 Elite Low Loss 0.35dB Max 3.0mm OFNP Plenum 30m (98ft)

[Contact Us](#)



Bend-Insensitive Fiber: Types, Benefits & Applications

Bend-insensitive fiber (BIF) is a specialized optical fiber engineered to resist signal loss when bent, even beyond the minimum bend radius of traditional fibers.

[Contact Us](#)



Fiber Optic Patch Panel Guide

Cable Management Features: Robust front and rear cable management is mandatory. Look for integrated strain relief, waterfall routing guides, and physical safeguards that strictly enforce the

[Contact Us](#)



Polarization-Maintaining Single Mode Optical Fiber

Features Maintain Polarization State of Input PANDA or Bow-Tie Fiber Specialized Photosensitive, Dispersion-Compensating, and Bend/Temperature-Insensitive

[Contact Us](#)



Search results for "outdoor fiber optic"

Plenum 6 Strand Indoor/Outdoor Fiber Optic Cable, OS2 9/125 Singlemode, Corning SMF-28® Ultra, Bend Insensitive, Black, Spool, 1000 foot Part # 11F3-006NH (2 Reviews)

[Contact Us](#)



What is Bend-Insensitive Fiber?

But what exactly is bend-insensitive fiber, and why is it a game-changer? This beginner's guide will answer these questions and explore its

[Contact Us](#)



How will fiber and equipment vendors meet the increased demand for

These technologies, while not yet mainstream for 2026, are part of the long-term strategy. Bend-Insensitive Fiber: Innovations in bend-insensitive and ultra-high fiber count cables are

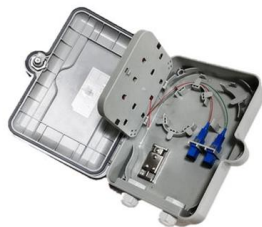
[Contact Us](#)



Bend Insensitive Optical Fiber , Fibercore

In terms of optically bend insensitive fiber, this means that a fiber has been designed to mitigate the optical losses that are associated with tight bend radii.

[Contact Us](#)



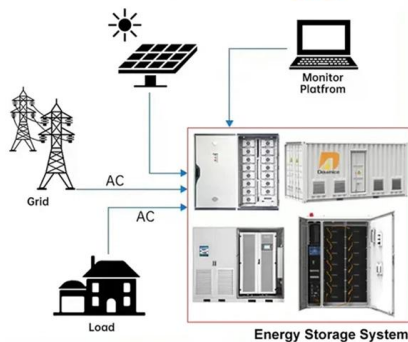
Essential Guide to the Construction of Optical Fiber Cables

Different types of optical fibers, such as single-mode, multimode, and bend-insensitive fibers, are designed for specific communication needs and environments. Installation methods for

[Contact Us](#)



DISTRIBUTED PV GENERATION + ESS



Fiber Optic & Cable Standards Guide , FiberMania

Fiber optic networks are built on well-defined standards that ensure quality, performance, and interoperability. This article explains eight of the most

[Contact Us](#)



What is Bend-Insensitive Fiber: A Beginner's Guide

Bend-insensitive fiber (BIF) is fiber optic cable that doesn't lose transmission power even when bent beyond its average radius. The cable has an

[Contact Us](#)



Fiber Optic Color Code Guide: Decoding Connector and

This guide decodes the crucial color codes on fiber optic cable jackets, patch cords, and connectors (UPC, APC, MPO), linking visual cues directly to

[Contact Us](#)

10 Best Fiber Optic Manufacturers for 2026

Discover the best fiber optic manufacturers globally, offering cutting-edge multimode and single mode fiber solutions. See who tops the list for quality

[Contact Us](#)



The FOA Reference For Fiber Optics

Bend-insensitive fiber adds a layer of glass around the core of the fiber which has a lower index of refraction that literally "reflects" the weakly guided modes back into

[Contact Us](#)



Contact Us

For datasheets, pricing, or custom fiber access solutions, please visit:
<https://frindel.es>