

Configuring Huawei S5720 Aggregation Switch for Aggregation





Configuring Huawei S5720 Aggregation Switch for Aggregation



Configuring Link Aggregation in LACP Mode

This document describes the configuration of Ethernet services, including configuring MAC address table, link aggregation, VLANs, VLAN aggregation, MUX VLAN, VLAN termination,

[Contact Us](#)

Huawei S5720-HI Manuals , ManualsLib

Huawei S5720-HI Pdf User Manuals. View online or download Huawei S5720-HI Quick Start Manual

[Contact Us](#)



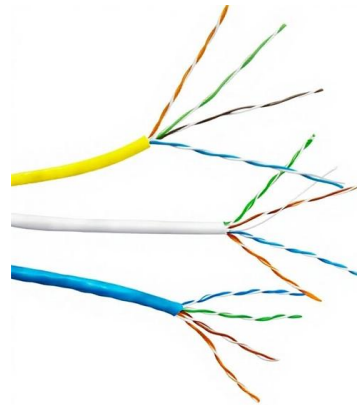
Huawei S5720S-SI Service Manual

Huawei S5700 series Ethernet switches (S5700 for short) are next-generation energy-saving Gigabit Ethernet switches that function as the access devices to

[Contact Us](#)

Example for Configuring Link Aggregation in LACP Mode

Example for Configuring Link Aggregation in LACP Mode Networking Requirements In Figure 4-23, SwitchA and SwitchB connect to devices in VLAN 10 and VLAN 20 through Ethernet links, and heavy



S5720-SI Datasheet (Detailed Version)

S5720-SI Datasheet (Detailed Version) S5720-SI Datasheet (Detailed Version) 1 Introduction Huawei S5700 series Ethernet switches (S5700 for short) are next-generation energy-saving Gigabit

[Contact Us](#)

Configuring VLAN Aggregation

This document describes the configuration of Ethernet services, including configuring link aggregation, VLANs, Voice VLAN, VLAN mapping, QinQ, GVRP, MAC table, STP/RSTP/MSTP, SEP, and so on.

[Contact Us](#)



Huawei S5720S Switch Series: Gigabit PoE+ for SMB

The Huawei S5720S series delivers practical, original Gigabit switching solutions tailored for access and aggregation needs across

[Contact Us](#)



Link Aggregation Configuration

S1720, S2700, S5700, and S6720 V200R011C10 Configuration Guide - Ethernet Switching This document describes the configuration of Ethernet services, including configuring link aggregation,

[Contact Us](#)



Learn Link Aggregation on Huawei Switches in 4

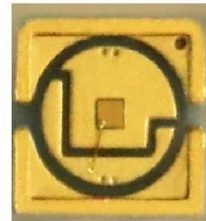
Audio tracks for some languages were automatically generated. Learn more [Configure VLANs on Huawei Switches Like a Pro in 10 Minutes!](#)

[Contact Us](#)

S5720-EI Series Switches

Huawei S5720-EI series provide flexible all-gigabit access and enhanced 10 GE uplink port scalability. They are widely used as access/aggregation switches in enterprise campus networks or gigabit

[Contact Us](#)



Example for Configuring VLAN Aggregation

S1720, S2700, S5700, and S6720 V200R011C10 Configuration Guide - Ethernet Switching This document describes the configuration of Ethernet services, including configuring link aggregation,

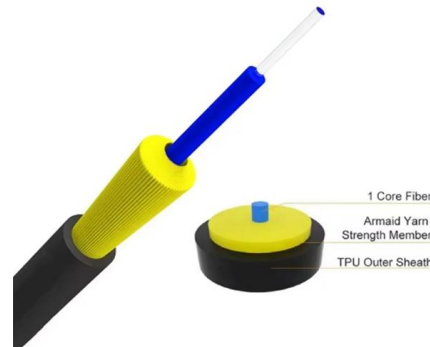
[Contact Us](#)



Link Aggregation Configuration

Ethernet link aggregation increases link bandwidth by bundling multiple physical links to form a logical link. Link aggregation can work in manual mode or Link Aggregation Control Protocol (LACP) mode.

[Contact Us](#)



Configuring Aggregation and Access Switches to Be Managed by the

Context A large number of aggregation and access switches need to be deployed on a large or midsize non-virtualized campus network. Therefore, during the initial batch deployment of

[Contact Us](#)

Demonstration of port aggregation configuration and troubleshooting

Demonstration of port aggregation configuration and troubleshooting of Huawei switch s5700Huawei port aggregation is divided into two types: manual Load Balancing eth-trunk link and LACP eth-trunk

[Contact Us](#)



S5720-SI Datasheet (Detailed Version)

S5720-SI Datasheet (Detailed Version) S5720-SI Datasheet (Detailed Version) 1 Introduction Huawei S5720 series Ethernet switches are next-generation energy-saving Gigabit Ethernet switches that

[Contact Us](#)



Link Aggregation



S2700, S3700, S5700, and S6700 Series Switches Product Use Precautions This document provides the use precautions of the product, including licenses, software versions, feature

[Contact Us](#)



How to Configure Huawei Switch S5720? Can Proper Setup Fortify

Unboxing a Huawei Switch S5720 feels like unwrapping a sports car--raw power awaits, but without proper tuning, it'll sputter. Configuring this enterprise-grade switch isn't just about ticking boxes; it's

[Contact Us](#)

01-05 VLAN AGGREGATION CONFIGURATION

aggregation allows the switch to assign IP addresses to hosts in sub-VLANs according to the actual number of hosts. For example, if sub-VLAN 2 contains only 10 hosts, the switch allocates IP

[Contact Us](#)



Aggregation Switch: Increasing the Priority of Special Traffic

Aggregation Switch: Increasing the Priority of Special Traffic Networking Requirements Core switches set up a CSS that functions as the core of the entire campus network to implement high network

[Contact Us](#)



Standalone AC Solution: Aggregation Switches Function as Gateways

Core switches set up a CSS that functions as the core of the entire campus network to implement high network reliability and forwarding of a large amount of data. Aggregation switches set up stacks to

[Contact Us](#)



Huawei S Series Quick Configuration

View and Download Huawei S Series quick configuration online. Campus Switches. S Series switch pdf manual download. Also for: S2750, S5700.

[Contact Us](#)

Learn Link Aggregation on Huawei Switches in 4

In this Huawei Link Aggregation Configuration lesson, you will learn how to configure Link Aggregation on Huawei switches. After this lesson, you will

[Contact Us](#)



Example for Configuring VLAN Aggregation

This document describes the configuration of Ethernet services, including configuring link aggregation, VLANs, Voice VLAN, VLAN mapping, QinQ, GVRP, MAC table, STP/RSTP/MSTP, SEP, and so on.

[Contact Us](#)



S5720-SI

Intelligent iStack clustering, 10 Gbit/s upstream ports and IPv6 forwarding enable use as aggregation switches in enterprise campus networks. Next-generation reliability, security, and energy-saving

[Contact Us](#)



How to Configure Huawei Switch S5720? Can Proper Setup Fortify

So, how do you configure a Huawei S5720 to dodge these pitfalls and unlock its full potential? And can meticulous configuration actually turn this switch into an unbreachable,

[Contact Us](#)

Summary of Link Aggregation Configuration Tasks

Table 3-4 Link aggregation configuration tasks
Favorite Download Update Date:2023-10-11
Document ID:EDOC1100247750 Views:406615
Downloads:739 Average rating:0.0

[Contact Us](#)



VLAN Configuration on Huawei S5720 Switch , PDF

This document provides a step-by-step guide for configuring VLANs on Huawei S5720 switches, including prerequisites and detailed CLI commands. It outlines

[Contact Us](#)



Configuring Link Aggregation in Manual Mode



S5700 and S6700 V200R024C10 Configuration Guide - Ethernet Switching This document describes the configuration of Ethernet services, including configuring MAC address table, link aggregation,

[Contact Us](#)



How to do Starting Configuration of Huawei Ethernet Switch S5735

In this video, we configure huawei network switch s5735 and S5700 series. first, go through the initial mode to access GUI (graphic user interface) web pag

[Contact Us](#)

Contact Us

For datasheets, pricing, or custom fiber access solutions, please visit:
<https://frindel.es>