

Complete Process of Cable Tray Installation





Complete Process of Cable Tray Installation

Cable Tray Installation Method Statement

Cable tray covers shall be provided after the cable installation activities are completed, wherever it is exposed to direct sun light. Cable tray installation

[Contact Us](#)



A Guide to Installing and Supporting Electrical Cable Trays

This guide covers the critical steps, from selecting the right electrical cable tray and performing accurate cable fill calculations to managing a safe cable pull through

[Contact Us](#)



Best Practices for Installing Cables in Trays

Cable tray cable installation generally follows these steps: Inspect cables before installation
Prepare and inspect the tray Set up installation

[Contact Us](#)



5 Steps to Learn How to Install Cable Trays

Installing a cable tray system requires careful planning to ensure it can support the weight of the cables and adheres to electrical safety codes. Here

[Contact Us](#)



Cable Tray and Conduit Installation Method Statement

Step-by-step cable tray and conduit installation method with safety, quality and inspection procedures as per IEEE standards.

[Contact Us](#)

Cable Tray Technical Guide A practical guide to product selection and

A practical guide to product selection and installation This guide for engineers and installers has been developed by ABB as a practical reference regarding cable tray characteristics, installation, and



[Contact Us](#)



Master Cable Tray Installation: A Professional Step-by-Step Guide for

Learn how to install cable trays for large-scale projects with our professional, step-by-step guide covering industry standards, safety protocols, and efficient routing techniques.

[Contact Us](#)



Cable Tray Installation Method Statement

The document provides guidelines for installing cable trays and accessories. It outlines 15 steps for the installation process including preparing cable tray

[Contact Us](#)



Cable Tray Installation Method Statement

This document provides a method statement for installing cable trays and trunking systems for building electrical services. It outlines 14 steps for the installation

[Contact Us](#)

Best Practice Guide to Cable Ladder and Cable Tray Systems

Introduction This publication is intended as a practical guide for the proper and safe* installation of cable ladder systems, cable tray systems, channel support systems and associated supports.

[Contact Us](#)



Cable Tray Installation

Whether you're building a commercial setup or upgrading an industrial plant, proper cable tray installation ensures neat wiring, safe access, and easy maintenance. But before you lay the first tray

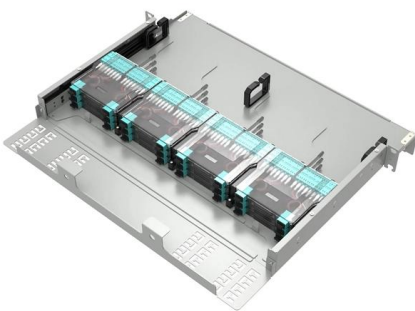
[Contact Us](#)



Method Statement installation of Cable Trays and Ladders

The Cable Tray system is installed in electrical rooms, plant rooms, and service corridors. This section will guide you through the necessary steps to

[Contact Us](#)



Mastering Cable Tray Installation , Step-by-Step Guide for a Seamless

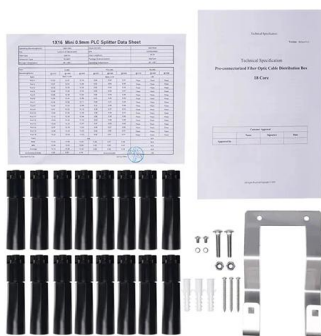
Mastering cable tray installation is crucial for creating a safe, organised, and efficient cable management system. By following this step-by-step guide, you can ensure a seamless setup that

[Contact Us](#)

How Does Cable Tray Installation Work?

Explore Harbor Energy Solutions' guide on cable tray installation, detailing benefits, considerations, and step-by-step processes.

[Contact Us](#)



CABLE TRAY INSTALLATION PROCEDURE

5. Cable tray installation shall preferably be installed flat in buildings or operating structures. Tray shall run as far as possible under flooring and walkways. Only in

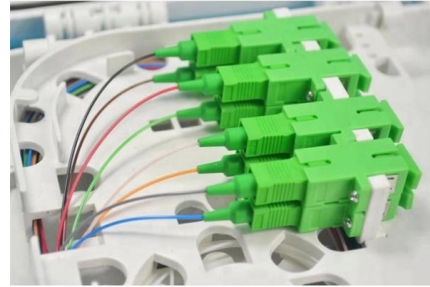
[Contact Us](#)



Installation Of Cable In Cable Trays: NEC, Safety

Installation of Cable in Cable Trays ensures proper routing, cable management, NEC compliance, grounding, fire safety, and load capacity.

[Contact Us](#)



Cable Tray Installation Procedure Guide

This document provides procedures for installing cable trays according to international standards.

[Contact Us](#)

METHOD STATEMENT FOR CABLE TRAY INSTALLATION

7.1.7 Install necessary fabricated supports for cable tray as per installation detail. All permanent materials (including fabricated supports), consumables, construction area and resources shall be

[Contact Us](#)



METHOD STATEMENT FOR Cable tray and trunking system installation

The cable tray shall be installed with a 40mm minimum space between the structure and the tray. All cable shall be securely fixed to the tray, work and the complete installation must be carried out in a

[Contact Us](#)



Complete cable tray manual for electrical engineers and

The final drawings for a cable tray wiring system may be completed and sent out for bid or construction more quickly than for a conduit wiring system. Cable trays

[Contact Us](#)



Cable Tray Technical Guide A practical guide to product selection and

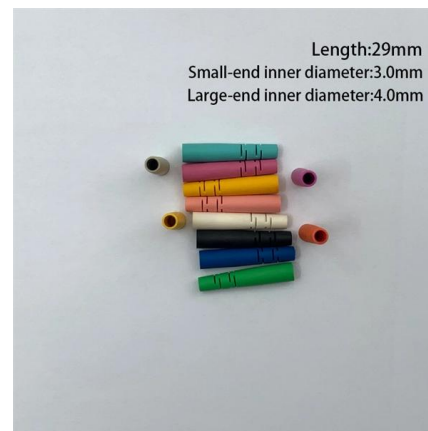
Cable tray length is selected based on the load to be supported, the distance between the supports (also referred to as the span), and handling and installation constraints.

[Contact Us](#)

Method Statement for the Installation of Cable Tray, Trunking, and

PREPARATION AND SUBMISSIONS BEFORE CABLE TRAY INSTALLATION All materials intended for cable tray, ladder and trunking shall be submitted for approval of the consultant as per the

[Contact Us](#)



Cable Tray Installation Method Statement

The document provides guidelines for installing cable trays at project sites in 3 steps: (1) receiving and storing material, (2) installation procedure, and (3) precautions.

[Contact Us](#)



How to install Cable Trays - Best Guide in 2026

Step-by-step on-site guide: learn how to plan, mark, support, and install cable trays correctly, from shop drawing approval to final checks.

[Contact Us](#)



Contact Us

For datasheets, pricing, or custom fiber access solutions, please visit:
<https://frindel.es>