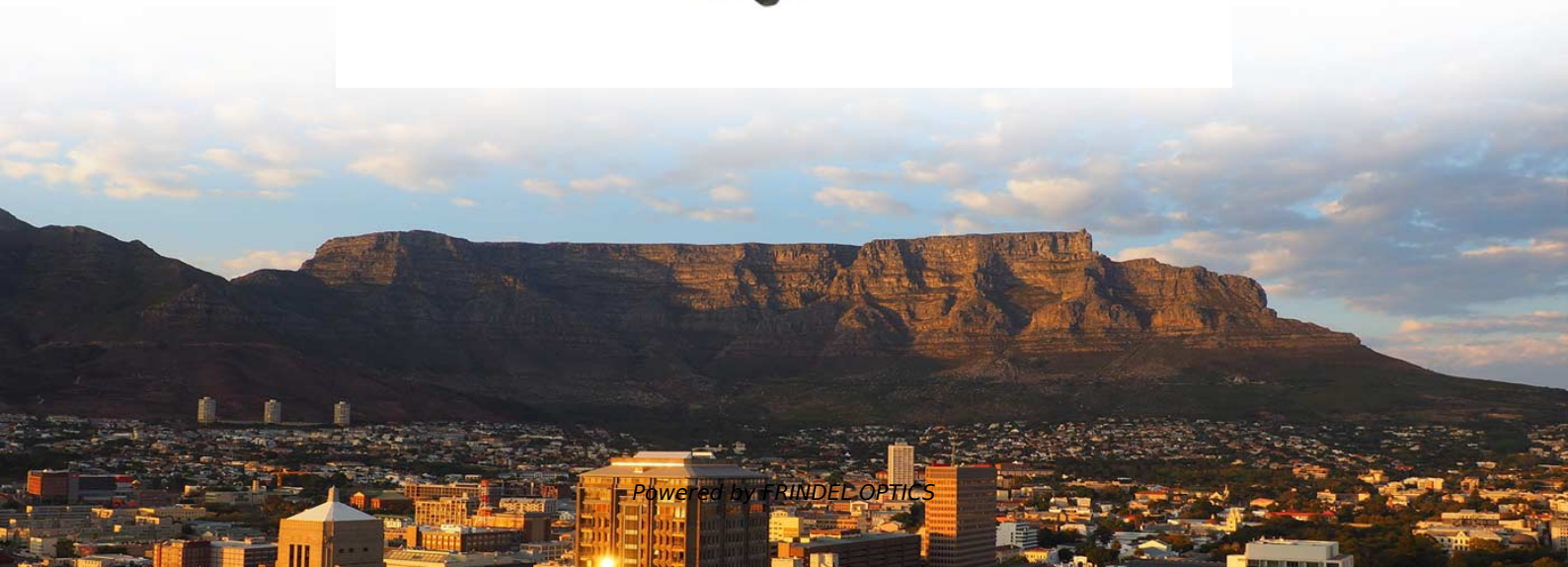




FRINDEL OPTICS

Comparison of Low-Loss Performance of Melt-Draw Tapered Types



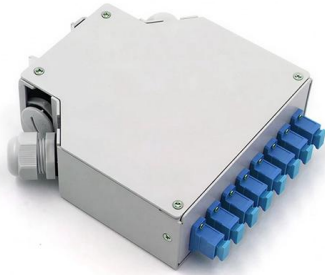


Overview

The melt strength and drawability of a low-density polyethylene (LDPE), a high-density polyethylene (HDPE) and HDPE/LDPE blends during extension flow were studied using a Rheotens test method unde.



Comparison of Low-Loss Performance of Melt-Draw Tapered Types



Design and Analysis of a Novel Low Loss Ultra-Wideband Coplanar

Finally, to fully utilize the advantages of these uniplanar transmission lines, implementation of wide-band and low-loss transitions between CPW and CPS is essential . There are several types of

[Contact Us](#)

Measurement Accuracy Considerations for Tapered Roller Bearings

Too much preload and the life will drastically diminish and parasitic energy losses will increase. Determining the exact setting needed is the key to a high performance system where both long life

[Contact Us](#)



Effect of saw-tooth ply drops on the mechanical performance of tapered

This study aims to investigate the effect of realistic AFP off-axis ply drop formations, referred to as saw-tooth ply drop tips, on the mechanical performance and the failure behaviour of

[Contact Us](#)

Comparison and Appraisal of Techniques for the Determination of

Reducing wear and increasing implant lifespan requires techniques to accurately and reproducibly measure material loss . The aim of this review was to evaluate published methods for the



Comparison of variable-thread tapered implant designs to a standard

Objectives: This randomised, controlled multicentre trial aimed at comparing two versions of a variable-thread dental implant design to a standard tapered dental implant design in cases of

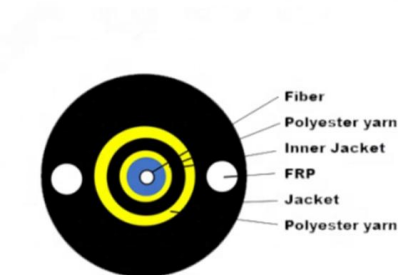
[Contact Us](#)



Melt strength and stretching ratio of low-density polyethylene

The focus of this article is to research the influence of the nano-ZnO concentration and the melt spinning operation conditions on the melt drawability of the neat LDPE and the LDPE

[Contact Us](#)



The effect of varying: o Die Gap o Shear Rate

The melt fracture elimination curves for the six conditions given in Table I are shown in Figure 1. The results given here clearly show that the coating process is not independent of the process conditions.

[Contact Us](#)





(PDF) A Reduced Order Model for Preliminary Design

In this paper, the development and experimental validation of a reduced order model for preliminary design and noncavitating performance

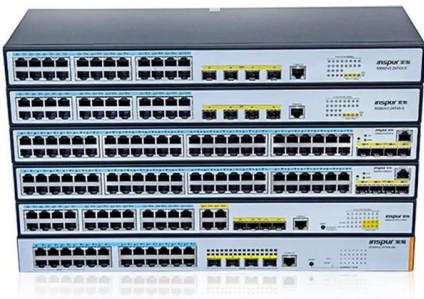
[Contact Us](#)



(PDF) Comparison of variable-thread tapered implant

Comparison of variable-thread tapered implant designs to a standard tapered implant design after immediate loading. A 3-year multicentre randomised

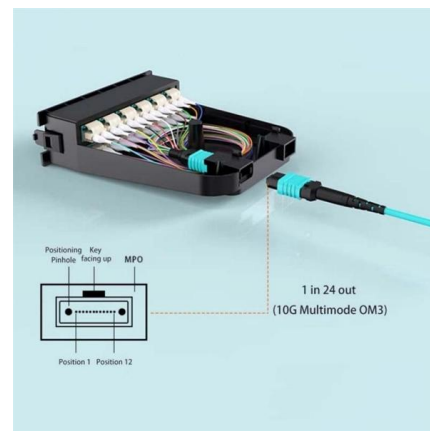
[Contact Us](#)



Pressure drop for molten polymer flow through tapered dies

The predictions are compared to numerical simulations for convergence half-angles (taper) from 0° to 30° and to analytical solutions

[Contact Us](#)



(PDF) Compression-molded three-dimensional tapered

PDF , We report for the first time, three-dimensionally tapered polymeric waveguides fabricated by the compression-molding technique.

[Contact Us](#)



Comparison between Laser and Stamping without Die

Without a lower die, the tapered punch head was directly applied to the workpiece for micro stamping, and a thicker workpiece surrounding the

[Contact Us](#)



Comparison and appraisal of techniques for the determination of

Reducing wear and increasing implant lifespan requires techniques to accurately and reproducibly measure material loss . The aim of this review was to evaluate published methods

[Contact Us](#)



Melt drawing as a route to high performance polyethylene

Here, we show that PEfilms (or filaments) can all be "melt drawn" in the temperature window 130-160 ~ thus yielding oriented products. The advantage of melt drawing over direct melt extrusion is that

[Contact Us](#)



Design and simulation of ultra-low loss triple tapered asymmetric

Request PDF , Design and simulation of ultra-low loss triple tapered asymmetric directional coupler at 1330 nm , Optical coherence tomography (OCT) is a promising imaging

[Contact Us](#)





Tapered distributed analogue tunable phase shifter with low insertion

Download Citation , Tapered distributed analogue tunable phase shifter with low insertion and return loss , Some improvements for distributed Schottky diode tunable phase shifters are

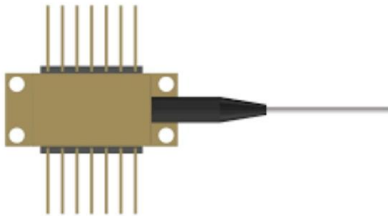
[Contact Us](#)



The Dynamics of Tapered-roller Bearings - A Bottom-up Validation

The results in the form of frequency-response functions (FRFs) are compared for the measurements and the simulations. The non-rotating as well as low-speed-rotating scenarios are presented. Finally, a

[Contact Us](#)



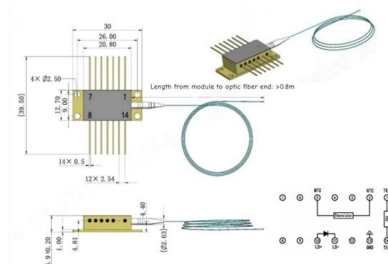
Tapered roller bearing load ratings versus performance

SKF tapered roller bearing benchmark test results conclude highly competitive performance on service life, frictional moment, noise and vibration levels and speed capabilities.

[Contact Us](#)



Outline drawings
mm



From All Directions: Pros and cons of tapered roller bearings

Tapered roller bearings have been in existence since the early 20th century and remain an ideal, versatile roller bearing for many applications, can tolerate multi-directional loads and operate

[Contact Us](#)



Comparison between tapered and cylindrical implants in the posterior

In addition, in vitro studies comparing the performance of tapered and cylindrical implants yielded variable and inconsistent results.^{12,24-26} Some in vitro studies showed that the effects of

[Contact Us](#)



tapered bearings performance comparison - Leading Bearing

While tapered bearings provide excellent performance, ball bearings may be preferred for applications requiring lower friction and higher speeds. EGI's diverse range of tapered and non

[Contact Us](#)



M Entry Flow of Polyethylene Melts in Tapered Dies

These losses were first measured as a function of the contraction angle ranging from 158 to 908. It was found that the excess pressure loss attains a local

[Contact Us](#)



Optimized Post-Tensioning Anchorage in Prestressed Concrete 1-Beams

Anchorage zones in prestressed concrete /-beams are designed to accommodate anchorage hardware and to provide adequate space for the reinforcement needed to distribute the highly concentrated

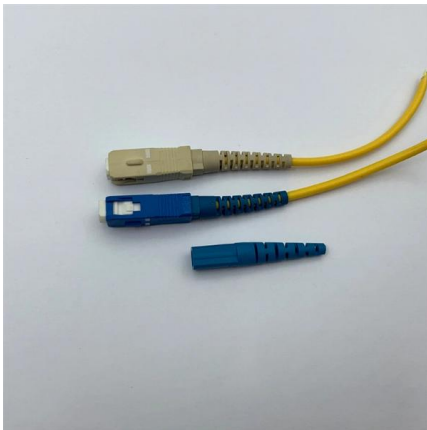
[Contact Us](#)



Comparison of peri-implant marginal bone level changes between tapered

The aim of this study was to compare straight and tapered implant designs in terms of marginal bone loss, the modified plaque index (mPI), and the modified bleeding index (mBI) for 5

[Contact Us](#)



Comparison Between Triple-Tapered and Double-Tapered Cemented

A prospective study was conducted comparing the early clinical and radiological results between the triple-tapered C-Stem (DePuy International, Leeds, UK) and the double-tapered Exeter

[Contact Us](#)

untitled []

Following previous literature studies, the present work attempts a cross-evaluation of different types of thrust bearings, in particular an open- and a closed pocket bearing, a tapered-land

[Contact Us](#)



Performance comparison between textured, pocket, and tapered-land

In this study, four different types of sector-pad thrust bearings have been cross-evaluated for operation under realistic operating conditions: (a) an open pocket bearing, (b) a closed pocket

[Contact Us](#)



Comparison between Laser and Stamping without Die

The forming of a micro tapered hole is based on nanosecond pulsed laser processing, which conforms to fast processing time and high throughput;

[Contact Us](#)



Contact Us

For datasheets, pricing, or custom fiber access solutions, please visit:
<https://frindel.es>