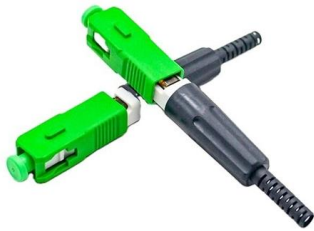


Communication optical cable Gyta333-48b1





Communication optical cable Gyta333-48b1



GYTA333 Fiber Optic Cable with Steel Wire and Aluminium Tape

Main products are optical fiber cables, data cables, communications cables etc. Its yearly productive capabilities are 4 million core kilometers, 0.5 million boxes, and 6 million pair kilometers respectively.

[Contact Us](#)

GYTA333 Fiber Optic Cable Core Count: Key Guide for Selection

GYTA333 Fiber Optic Cable Core Count: Key Considerations & Application Insights Fiber optic cables have become the backbone of modern communication infrastructure, and among the various types

[Contact Us](#)

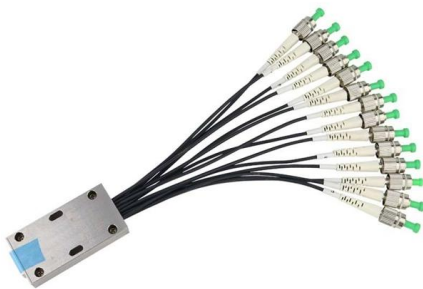


Hong'an Group Co., Ltd

Product Application: This optical cable is suitable for laying near the sea, underwater, or uphill.

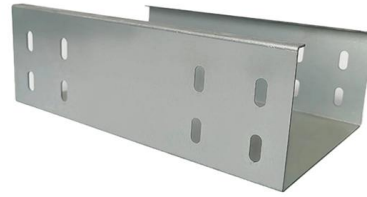
Product Features: Excellent waterproof performance; Good temperature performance; Steel wire armored

[Contact Us](#)



GYTA333 Outdoor Fiber Optic Cable Steel Wire Armored Optical Cable

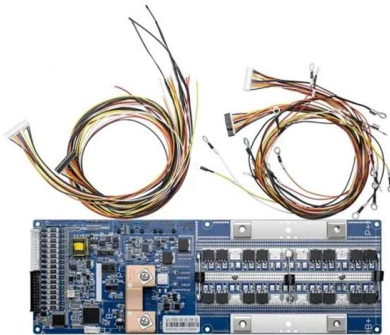
In most cases, the GYTA333 fiber optic cable is laid in the water drainage and it has fantastic feature that enables it to perform effectively under water environments. Additionally, GYTA333 fiber optic



Steel Wire Double Armor Cable GYTA333 24 36 48 Core Fiber Hoils

Product descriptions from the supplier Products Description GYTA333 12 24 36 48 Core Fiber Hoils Outdoor Direct Anti Rodent Direct Duct Armoured Underwater Communication Fiber Optic Cable

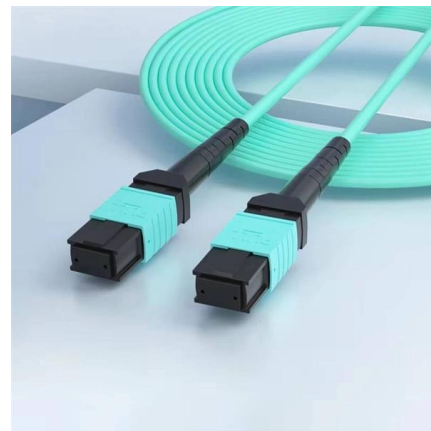
[Contact Us](#)



GYTA333

The products are especially suitable for equipment communication and indoor access network

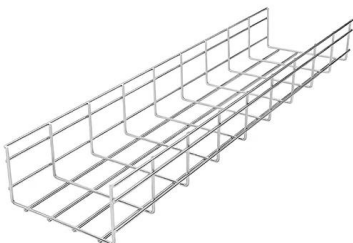
[Contact Us](#)



GYTA333 12 24 36 48 Core Fiber Hoils Outdoor Direct Anti Rodent

Product descriptions from the supplier Products Description GYTA333 12 24 36 48 Core Fiber Hoils Outdoor Direct Anti Rodent Direct Duct Armoured Underwater Communication Fiber Optic Cable

[Contact Us](#)





GYTA33 GYTA333 Singlemode Anti Rodent Armoured

GYTA33 GYTA333 Singlemode Anti Rodent Armoured Submarine Optic Fiber Cable for Undersea, Find Details and Price about Armored Fiber Cable Underwater

[Contact Us](#)



Submarine Cable (GYTA333)

The structure of GYTA33 optical cable involves placing optical fibers in a loose tube made of high-modulus polyester material, filled with waterproof compound. The center of the cable core is a metal

[Contact Us](#)

GYTA Optical Cable , TeleTechno Communications

GYTA fiber optic cable is applied to long-distance positioning, the connection of the internal building, the distribution and supporting system of the internal building. A steel cable sometimes sheathed with

[Contact Us](#)



GYTA333 48 Steel Wire Armored Waterproof Fiber Cable

Main products are optical fiber cables, data cables, communications cables etc. Its yearly productive capabilities are 4 million core kilometers, 0.5 million boxes, and 6 million pair kilometers respectively.

[Contact Us](#)



GYTA333 Single-Mode 48core Outdoor Fiber Optical Duct Cable

GYTA333 is an outdoor communication optical cable with a structure consisting of a metal reinforcement member, a loose tube layer-laid filler, an aluminum-polyethylene bonded sheath, double fine round

[Contact Us](#)



GYTA33-Steel Wire Armoring Optical Cable Product

GYTA33 (Loose tube stranding, Metal strengthmember, Flooding jelly compound, Aluminum-polyethylene adhesive inner sheath, Single smaller round steel wire

[Contact Us](#)

Outdoor Communication Cable(GYTA33)

An occasional unclear of length marking is permitted if both of the neighboring markings are clear. The both cable ends are sealed with heat shrinkable end caps to prevent water ingress.

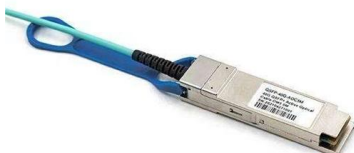
[Contact Us](#)

Mesh door/glass door optional



Sp-601 glass door

Sp-602 mesh door



GYTA333

The products are especially applicable for the installation in the freshwater and shallow water area. It doesn't need the junction, and can be used for the wiring under the water with shorter communication

[Contact Us](#)



GYTA33 Optical Cable , TeleTechno Communications

GYTA fiber optic cable is applied to long-distance positioning, the connection of the internal building, the distribution and the system that supports the internal building.

[Contact Us](#)



Steel Wire Double Armor Cable GYTA333 24 36 48 Core Fiber Hoils

The fibers are positioned in PBT loose tube. The loose tube and fillers are compactly stranded around the central metal reinforcement core to form a cable core.

[Contact Us](#)

Contact Us

For datasheets, pricing, or custom fiber access solutions, please visit:
<https://frindel.es>