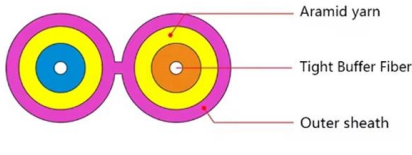


Columbia Transparent Optical Cable G 652D





Columbia Transparent Optical Cable G 652D



Draka Single-Mode Fiber Overview , PDF , Optical Fiber

Draka's Single-Mode Fiber (SMF) G.652.B offers high reliability and performance for telecom applications across various cable constructions, operating efficiently at 1310 nm and 1550 nm

[Contact Us](#)

Characteristics of G.652 Optical Fiber

G.652 fiber characteristics G.652 optical fiber is a kind of optical fiber that is widely used in the network. ITU-T divides G.652 into four types of optical fibers.

[Contact Us](#)



G.652D Optical Fiber: Specifications, Price Factors

Key G.652D fiber specifications include: Low Water Peak Attenuation: Enables transmission in the E-band (1360-1460nm), unlocking

[Contact Us](#)



G.652.D 144-Fiber Optical Cable Datasheet

This document provides technical specifications for a 144-fiber single mode optical fiber cable. The cable uses loose buffer tubes constructed of polybutylene

[Contact Us](#)



More durable and robust

The outer layer is made of environmentally friendly PVC, which is soft and elastic. It can be stretched without damage, so you can use it with confidence.



G652, G657A, G655, G654 Optical Fiber

G654: Ultra-low loss optical fiber, mainly used for transoceanic optical cables. The ordinary core is pure SiO₂, and the ordinary core needs to be doped

[Contact Us](#)



Optical Fiber Single-Mode Fiber G652.D (008)

Datasheet: GD055683v12 SPECIFICATION FOR LOW WATER PEAK SINGLEMODE OPTICAL FIBER ITU-T RECOMMENDATION G.652.D, and IEC 60793-2-50 Type B1.3, used in OS1/OS2 CABLES

[Contact Us](#)



G652D vs. G657A2

G652D and G657A2 are two ITU-T standards for single-mode optical fiber and cable. These standards describe the transmission, mechanical and geographical attributes of a single-mode

[Contact Us](#)





Optical Fiber Single-Mode Fiber G652.D (008)

"Leviton is dedicated to designing, developing and manufacturing sustainable high performance structured cabling and specialty cabling solutions." The information contained in this document is

[Contact Us](#)



What is G652D Fiber Optic?

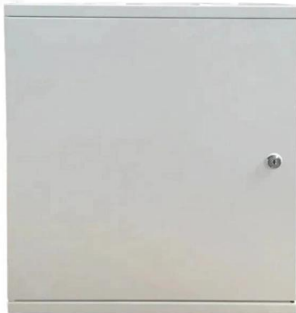
La fibra G652D es el modelo estándar más utilizado actualmente en los sistemas de comunicación. Tiene un excelente rendimiento óptico.

[Contact Us](#)

G.652.D 144-Fiber Optical Cable Datasheet , PDF

This document provides technical specifications for a 144-fiber single mode optical fiber cable. The cable uses loose buffer tubes constructed of polybutylene

[Contact Us](#)



12-Fiber G.652D Optical Cable Specs

This document provides specifications for an optical fiber cable, including: 1) The cable is designed for aerial use with a maximum span of 120m and can withstand winds up to 25m/s and no ice. 2) The

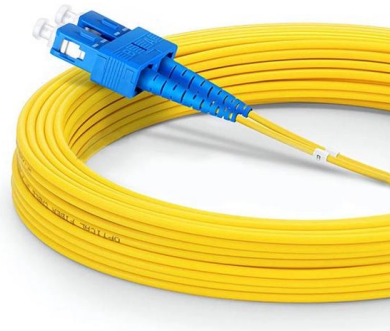
[Contact Us](#)



CENTRAL TUBE METALLIC ARMOR CABLE

Optical fibre cables supplied in compliance with this specifications is capable to withs-tand the typical service condition for a period of twenty-five (25) years without detriment to the operation

[Contact Us](#)



Optical Fibre Cable Technical Specification

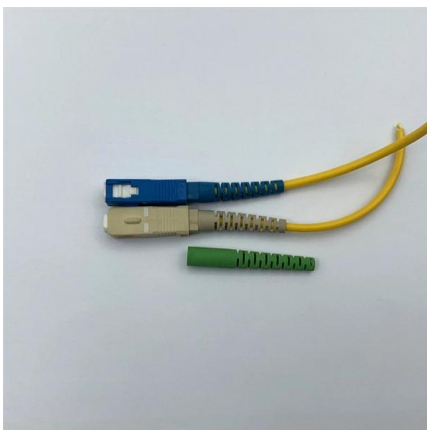
G.652D ADSS 600m Span 1. General 1.1 Scope
This Specification covers the design requirements and performance standard for the supply of optical fibre cable in the industry. UnitekFiber ensures a

[Contact Us](#)

G.652.D vs G.657.A1 vs G.657.A2: What's the

Explore the differences between G.652.D, G.657.A1, and G.657.A2 fiber optic cable specifications. Learn about their unique characteristics, bend

[Contact Us](#)



Fibre Optic Cable 24 and 48 Core SM G652D Dielectric Loose Tube

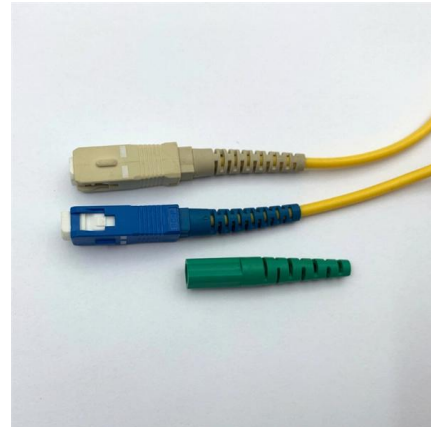
24 and 48 Core SM G652D Dielectric Loose Tube Fiber Optic Cable Mechanical and environment performance Applications Adopted to Outdoor distribution. Adopted to trunk power transmission

[Contact Us](#)



G.652.D Single-Mode Optical Fibre Specifications

G.652.D Single-Mode Optical Fibre Specifications
*Values for cabled fibre, local attenuation discontinuity [Contact Us](#)



DATA_SH_G652D-FIBER

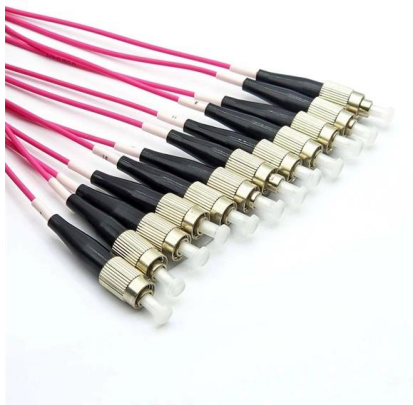
This enhanced Singlemode fiber provides improved performance across the entire 1260 nm to 1625 nm wavelength spectrum due to its low attenuation in 1383 nm the water-peak region. The fiber design is

[Contact Us](#)

Enhanced Single-Mode Fibre ITU-T G.652

APPLICABLE STANDARDS IEC / EN 60793-2-50
type B-652.D ITU-T Recommendation G.652.D

[Contact Us](#)



G.652.D, G.657.A1, G.657.A2, what's the difference?

In the field of optical communication, fiber specification is one of the important factors to ensure network performance and application stability.

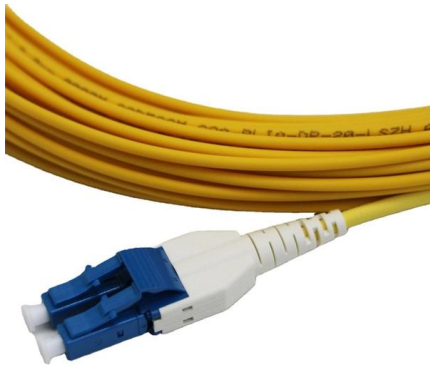
[Contact Us](#)



Spec G652D Fibre Optic Cable

Home / Fibre Optic / Cable / Outdoor Cable / Fibre Specs Spec G652D Fibre Optic Cable By suppressing the water peak that occurs near 1383nm in conventional

[Contact Us](#)



briticom , briticom@briticom , +44 (0)1604 434 186

briticom , briticom@briticom , +44 (0)1604 434 186

[Contact Us](#)

STC

The Soft Tube Cable (STC) is a non-metallic, longitudinal water-protected outdoor fibre optic cable, designed for the construction of optical infrastructure networks

[Contact Us](#)



PRODUCT CATEGORY				
Open rack Series	Open Rack	12U Apert open rack	18" Open Wall rack	Adjustable Depth Open rack
Wall mount rack Series	Glass door Wall mount rack	Mesh door Wall mount rack	Double section Wall mount rack	Economic type Wall mount rack
Floor standing server rack	Glass door with casters	Mesh door with casters	42U Standard Server rack	Double open door Server rack
Outdoor cabinet	Air conditioner Outdoor cabinet	Outdoor cabinet with plinth	Outdoor cabinet with fan cooling	Double Wall Outdoor cabinet
Splitter series	Bare Fiber Splitters	Blackless Fiber Splitters	ABS Splitter	Panour Splitters
Splitter series	LCX Splitters	Rack Mount Splitters	Mini Plug-in Type Splitter	Tray Splitters
Patch cord series	LC-LC	SC	FC	LC-LC
FTTH product series				

Microsoft Word

The optical fibres are made of a high grade doped silica core surrounded by a silica cladding; coated with a dual layer of UV cured acrylate based coating. This enhanced single mode fibre also provides

[Contact Us](#)



G.652D Optical Fiber: Specifications, Price Factors

In the backbone of global communication networks lies a critical component: G.652D optical fiber. As the most widely deployed single mode fiber

[Contact Us](#)



Contact Us

For datasheets, pricing, or custom fiber access solutions, please visit:
<https://frindel.es>