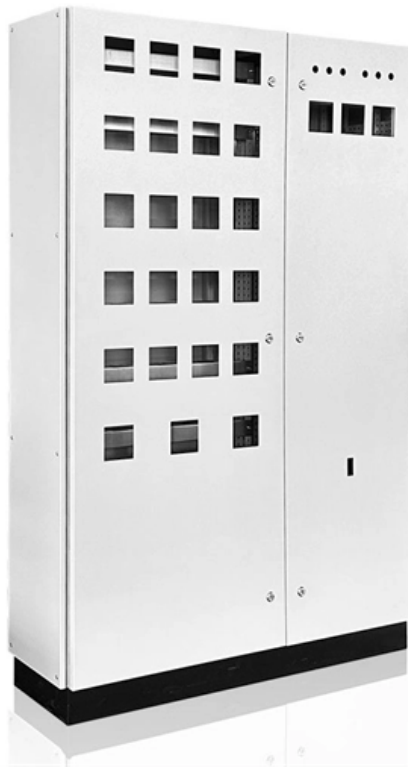


# **Columbia Low-Power Optical Module QSFP28**





## Overview

---

In the QSFP28 module the DSP is paired with a highly efficient silicon photonics optical front-end and a power-optimized tunable laser, resulting in a typical module power dissipation of less than 5W. Built around Coherent Steelerton DSP, the 100G ZR QSFP28-DCO transceiver is fully compliant to the IEEE 802. QSFP28 (Quad Small Form-Factor Pluggable 28) enables 100G transmission by aggregating four parallel 25G electrical lanes, delivering an optimal. Below, you will find comprehensive module comparisons, realistic market pricing, and precise vendor compatibility protocols to ensure a. Cisco® QSFP28 100G ZR extends 100GbE coherent links from QSFP28 ports reaching up to 80km over dark fiber and up to 300km over amplified Dense Wave Division Multiplexing (DWDM) links. By providing four lanes of 25G, QSFP28 enables a streamlined upgrade path from lower-speed networks, making it a popular choice for scaling data center interconnect (DCI) and.



## Columbia Low-Power Optical Module QSFP28

---



### **QSFP28 Transceiver: Complete 100G Connectivity Guide (2026)**

QSFP28 transceiver guide covering module types, pricing, compatibility, and deployment. Learn how to choose, deploy, and troubleshoot 100G QSFP28 optics.

[Contact Us](#)

### **SFP+, SFP28, QSFP+, QSFP28, QSFP56, QSFP-DD,**

Initial Published: February 19, 2022 The optical transceiver plays a crucial role in modern fiber networking. Various high-speed transceiver types are

[Contact Us](#)



### **QSFP28 Transceiver: The Ultimate 100G Optical**

The QSFP28 optical transceiver has become the cornerstone of 100G networking due to its outstanding balance of performance, density, power

[Contact Us](#)

### **QSFP28 Optical Transceiver 100 Gigabit Ethernet for up to 10 km Reach**

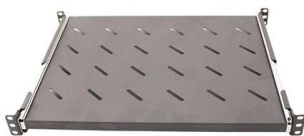
The Lumentum 100G QSFP28 LR4 Optical Transceiver has several low-speed interface connections including a 2-wire serial interface (SCL and SDA). These connections include; Low Power Mode



### **QSFP28 vs SFP56: Key Differences, Specifications and**

Explore the key differences between QSFP28 and SFP56 optical modules. Understand their roles in data centers and how they compare in

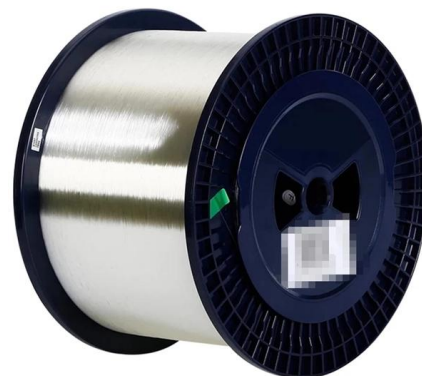
[Contact Us](#)



### **100G Coherent QSFP28 C-band Tunable 80km DCO Transceiver**

The 100G ZR QSFP28 DCO transceiver supports 100G transmission over distances up to 120km (dispersion limited, optionally extendable to 300km) for edge network applications. On the host side,

[Contact Us](#)



### **Cisco QSFP28 100G ZR Digital Coherent Optics Module**

This DCO module is tunable across C-band. The module is compatible with widely deployed ports of QSFP28 100G and 100GBASE ER CAUI-4 client interfaces. Its maximum operating power range is

[Contact Us](#)



### **Overview of QSFP28 LR4 Optical**



## Transceiver

Discover FS's QSFP28 100G LR4 optical transceiver, offering low power consumption, perfect compatibility, and reliable long-distance performance

[Contact Us](#)



## The Ultimate Guide to QSFP Cables

Explore the ultimate guide to QSFP cables. Learn QSFP types, differences from SFP, installation methods, and benefits for high-speed data

[Contact Us](#)

## QSFP28 optical transceivers , Smartoptics

By providing four lanes of 25G, QSFP28 enables a streamlined upgrade path from lower-speed networks, making it a popular choice for scaling data center

[Contact Us](#)



## Understanding QSFP28 Optical Modules: A

Understanding QSFP28 Optical Modules: A Comprehensive Guide Abstract: In today's rapidly evolving technological landscape, high-speed data transmission is

[Contact Us](#)



## 100GBASE-FR QSFP28 1310nm 2km Transceiver Datasheet , FS

Note that on power up (including hot insertion) the module should post this completion of reset interrupt without requiring a reset. Low Power Mode (LPMMode) pin is used to set the maximum power

[Contact Us](#)



## Cisco QSFP28 100G ZR Digital Coherent Optics Module Data Sheet

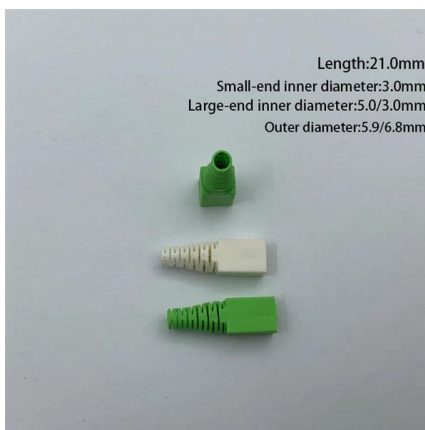
The QSFP28 100G ZR can cost effectively extend 100G links to 80km on any fiber type, and is a cost-effective migration option of multiple 10G wavelengths to 100G.

[Contact Us](#)

## QSFP28 Transceiver: Complete 100G Connectivity Guide

This guide equips network engineers with everything they need to know about QSFP28 optical transceivers -- from module types and specifications to switch compatibility, power

[Contact Us](#)



## TE Connectivity

Hier sollte eine Beschreibung angezeigt werden, diese Seite lässt dies jedoch nicht zu.

[Contact Us](#)



## 100G QSFP28 Cable and Transceiver Moduls Datasheet , FS

Product overview The FS® 100GBASE Quad Small Form-Factor Pluggable (QSFP28) portfolio offers customers a wide variety of high-density and low-power 100 Gigabit Ethernet

[Contact Us](#)



## 100G QSFP28 Explained: Key Features, Applications,

As data centers, cloud computing, and enterprise networks demand higher bandwidth and faster data transmission, the 100G QSFP28 transceiver

[Contact Us](#)

## The Differences Between SFP, SFP+, SFP28 vs

Learn the differences between SFP, SFP+, SFP28, and QSFP28 transceivers. Which are compatible? Which deliver better performance? Find

[Contact Us](#)



## What Is QSFP28? A Clear Explanation of 100G Transceivers

QSFP28 (Quad Small Form-Factor Pluggable 28) enables 100G transmission by aggregating four parallel 25G electrical lanes, delivering an optimal balance of bandwidth efficiency, power

[Contact Us](#)



## 100G ZR QSFP28 Digital Coherent Optics Transceiver

The Steelerton DSP is the first purpose-built DSP for 100G ZR applications,

[Contact Us](#)



## 50Gbps QSFP28 Optical Module

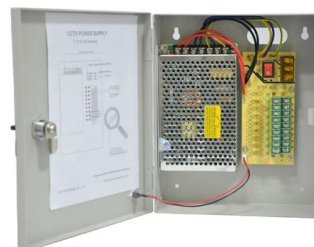
Table 1-3246 50Gbps-QSFP28-SMF-1295.56~1300.05nm-80km-commercial specifications

[Contact Us](#)

## The Ultimate Guide to Cisco QSFP28 Transceiver Modules for 100G

Discover the wide range of high-density and low-power 100G Ethernet connectivity options offered by Cisco's QSFP28 transceiver modules for data center and high-performance computing

[Contact Us](#)



## QSFP28, SFP28 AND QSFP+ OVERVIEW

GREY QSFP28 TRANSCEIVERS Dist: Typical distance, normally based on dispersion properties. min Tx power and Rx sensitivity. Dispersion/path enalties not taken into account. FEC: If FEC is

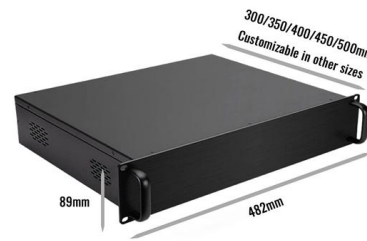
[Contact Us](#)



## 50G QSFP28/SFP56 Cable and Transceiver Modules Data Sheet

Product overview The FS® 50GBASE Quad Small Form-Factor Pluggable (QSFP28/SFP56) portfolio offers customers a wide variety of high-density and low-power 50 Gigabit

[Contact Us](#)



### FS QSFP28 SR4 Optical Transceiver: High

Explore FS QSFP28 SR4 optical transceiver with low power consumption, perfect compatibility, and reliable performance for efficient data

[Contact Us](#)

### 100Gb/s QSFP28 Transceivers

Amphenol's 100G QSFP28 optical modules include SR4, AOC, AOC break out, CWDM4, LR4, ER4 Lite, ER4 and ZR4 series, which adopt LC or MPO optical ports and are compatible with IEEE802.3bm,

[Contact Us](#)



### 50Gbps QSFP28 Optical Module

When this type of optical module is used to interconnect with a WDM device, the 1+1 protection switching duration on the client side of the WDM device is longer than 50 ms. The optical power

[Contact Us](#)

### 100G Optical Module Selection Guide:



## Advantages and Types of QSFP28

Explore the QSFP28 100G optical module, a vital component for high-speed network connections. Discover its unique features, advantages, and various types to meet diverse

[Contact Us](#)



## QSFP28 Active Optical Cable Assemblies

COST EFFICIENT, HIGH PERFORMANCE, PLUG AND PLAY INTERCONNECT SOLUTIONS Amphenol ICC's 100G QSFP28 to QSFP28 Active Optical

[Contact Us](#)

## Contact Us

---

For datasheets, pricing, or custom fiber access solutions, please visit:  
<https://frindel.es>