

# **Columbia Customs DAC High-Speed Cable 2 5G**





## Columbia Customs DAC High-Speed Cable 2 5G

---



### How To Choose DAC High-speed Cable?

DAC high-speed cable is a low-cost and short-distance connection solution for data center equipment. It consists of a cable and optical fiber transceiver devices at

[Contact Us](#)

### Direct Attach Cable (DAC) Assemblies

High-speed I/O passive cable assemblies that can deliver data rates as high as 400 Gbps with a variety of lengths or customized options for greater design flexibility.

[Contact Us](#)



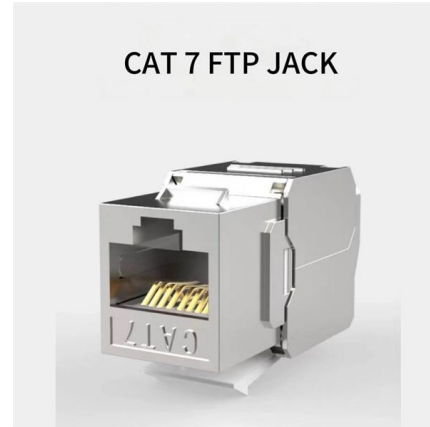
### Austria G& G Harness cable GG 2Speed 251 Automotive Ethernet 5G

Product sellpoints 251 MHz Frequency: Optimized for high-frequency automotive Ethernet performance. 2-Core Crimp Design: Secure, reliable connection with easy crimp installation. 2 GG Speed:

[Contact Us](#)

### High-End Audiophile USB Cables , Best USB Cables for Audio

Upgrade your audio with Wireworld's audiophile USB cables. These high-end cables offer a natural tone, dynamic sound, and superior musical experience.



**2m 25G SFP28 Passive DAC Cable, Direct Attach**

Check 25G SFP28 DAC Twinax Cable data sheet (2m, Passive, SFP28 to SFP28, 30AWG) (2m, Passive, SFP28 to SFP28, 30AWG) and price list on FS , buy

[Contact Us](#)



**AudioQuest Columbia (2-meter/6.6 feet) Stereo**

Reviews (2) Specs Overview: This AudioQuest Columbia product contains two 2-meter audio interconnect cables with male RCA connectors on each end. Each

[Contact Us](#)



**Spec Sheet**

Regional Availability -- Global Siemon SFP28 25G passive Direct Attach Copper Cable assemblies are designed to exceed industry standard performance offering a cost-effective, low latency, low-power

[Contact Us](#)





## DAC Cables Explained: Do They Matter, How to

Discover the differences between passive and active DAC cables, how to choose the right one, and explore top picks for every budget in our 2025

[Contact Us](#)



100G QSFP28 to 4\*25G SFP28 AOC  
QSFP-4X25G-AOC\*\*M



25G SFP28 AOC  
SFP28-25G-AOC\*\*M



100G QSFP28 AOC  
QSFP-100G-AOC\*\*M

### AOC

10G 25G  
40G 10G



40G QSFP+ AOC  
QSFP-40G-AOC\*\*M

40G QSFP+ to 4\*10G SFP+ AOC  
QSFP-4X10G-AOC\*\*M

## SFP-H25G-CU2.5M , Cisco SFP28 DAC , Direct Attach

The Cisco SFP-H25G-CU2.5M is a 2.5-meter long twinax copper cable for high-speed data transmissions up to 25 Gbps. Featuring passive copper technology,

[Contact Us](#)

## JTOPTICS 10G/25G DAC Cables , High-Performance

Discover JTOPTICS 10G/25G DAC Cables for seamless, high-speed data transmission in scalable network environments.

[Contact Us](#)



## Your Ultimate Guide to DAC Cable - VCELINK

As a cost-saving alternative to optical transceivers, DAC cables allow for high-speed connectivity between devices over short distances via copper wires.

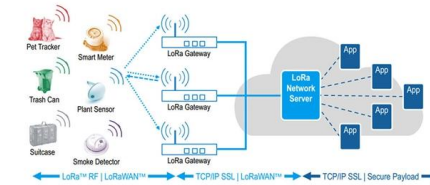
[Contact Us](#)



### AudioQuest Columbia RCA interconnects (Pair) w/DBS

AudioQuest Columbia is built around AudioQuest's wonderful PSC+ copper conductors, an ultra-pure copper that has delivers unmatched even-balanced

[Contact Us](#)



### 28/24 AWG USB 2.0 Hi-Speed A to A Extension Cable

High-performance Ultraflex 28/24AWG wiring ensures excellent quality exceeding all USB expectations, the cable includes PVC over-molding on the USB type-A male

[Contact Us](#)

### Flyer

Available in black, red, white, or blue jacket colors (plus orange and silver in MESH sleeve), in half meter lengths from 0.5M to 3M and full meter lengths up to 5M depending on speed. Great for high-density



[Contact Us](#)



### Customized 25G SFP28 Passive DAC Twinax Cable

Customized 25G SFP28 Passive Direct Attach Copper Twinax Cable is designed for use in 25GBASE Ethernet. This cable is compliant with IEEE P802.3 by Ethernet standard and SFP28 MSA

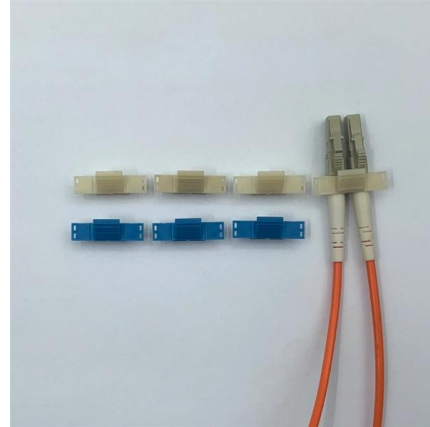
[Contact Us](#)



## Direct Attach Copper (DAC) Cable , Shop

Direct Attach Copper (DAC) cables are high-speed, hot-pluggable factory terminated cables designed for data center and networking applications. It integrates multiple optical interfaces into a compact form

[Contact Us](#)



## 2m 25G SFP28 Passive DAC Cable, Direct Attach Twinax Cable

With these features, this easy to install, high speed, cost-effective direct attach copper twinax cable is suitable for short-distance connectivity within a rack or between adjacent racks in data centers.

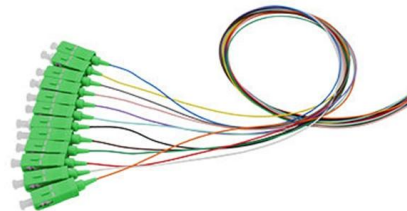
[Contact Us](#)



## KLOTZ AIS GmbH , USB 2.0 high speed cable

USB 2.0 high speed cable transmission rate up to 480 Mbit/s PD (power delivery) up to 2.5 W (5 V / 500 mA) rugged PVC jacket very flexible gold-plated contacts Lieferzeit 2-3 Tage Add to Wish List Add to

[Contact Us](#)



## AudioQuest Columbia (2-meter (6.6 feet))

Overview: This Audioquest Columbia product contains two 2-meter audio interconnect cables with XLR connectors on each end. Each cable is equipped

[Contact Us](#)



## Handcrafted Custom Cables , Gladiator Cables

Elevate your audio experience with handcrafted custom cables from Gladiator Cables. Our premium cables are meticulously crafted in Europe, offering bespoke

[Contact Us](#)



### What is DAC Cable? The Definitive Guide

What Is A DAC Cable? What Is A DAC Breakout Cable? DAC Cable vs. Fiber How Do You Classify DAC cables? FAQ Final Words A DAC cable is short for direct-attach copper cable. It is a pre-terminated Twinax copper cable assembly with two pluggable connectors, connecting ports directly within active platforms such as networking switches, routers, servers, adapter cards, or data storage devices. Take the SFP+ DAC cable as an example, shown in the picture below. It consists of a pre-terminated Twinax copper cable assembly with two pluggable connectors, connecting ports directly within active platforms such as networking switches, routers, servers, adapter cards, or data storage devices. See more on optcore Missing: Columbia Customs Must include: Columbia Customs FS

### 2.5m (8ft) NETGEAR Compatible 25G SFP28 Passive Direct Attach

With these features, this easy to install, high speed, cost-effective direct attach copper twinax Cable is suitable for short-distance connectivity within a rack or between adjacent racks in data centers.

[Contact Us](#)

### AudioQuest Columbia

AudioQuest 2M Columbia RCA Interconnects with Cold-welded silver-plated RCA plugs offered by Kevin McGuire at The Sound Station in Bartlesville.

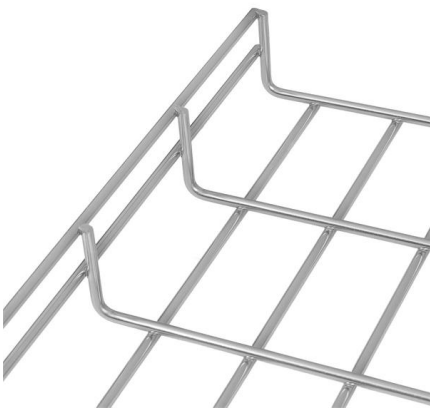
[Contact Us](#)



### What Is DAC Cable, Direct Attach SFP+ Cable Passive

High speed direct attach cable (DAC) assemblies, or twinax cable assembly used in data centers. It provides a lower cost, higher density alternative

[Contact Us](#)



### SFP28 DAC Passive

25GBASE-CR SFP28 to SFP28 Direct Attach Copper Twinax Cable, Passive. 25G SFP28 DAC is the next logical migration from 10G to reduce the cost per Gbit/sec and provides 2.5 times the bandwidth

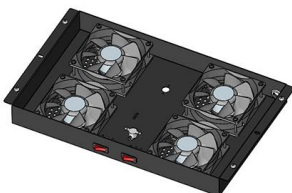
[Contact Us](#)



### What is DAC Cable? The Definitive Guide

Take the SFP+ DAC cable as an example, shown in the picture below. It consists of a fixed-length (usually less than 7 meters) Twinax cable and

[Contact Us](#)





### SFP28 DAC Passive

25G SFP28 DAC is the next logical migration from 10G to reduce the cost per Gbit/sec and provides 2.5 times the bandwidth of 10G using in the same SFP form factor. It is ideal for data center top of rack,

[Contact Us](#)



### High-speed DACs (>10 MSPS) , TI

This design illustrates the circuit modifications required to support high bandwidth and high frequency applications using current source DACs like the DAC38J84 with the TRF3704 modulator.

[Contact Us](#)

## Contact Us

---

For datasheets, pricing, or custom fiber access solutions, please visit:  
<https://frindel.es>