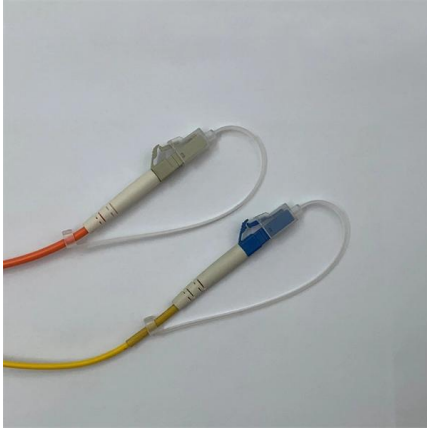


Color mark photoelectric eye fiber optic color sensor





Color mark photoelectric eye fiber optic color sensor



Color Mark Sensors

For the new Color Mark Sensors, the Photoelectric Sensor uses RGB three-color LEDs as the light source, and the Fiber Sensor uses a white LED that has a broad wavelength range.

[Contact Us](#)

Color Mark Sensor, Smart Color Mark Photoelectric Sensor

KS series color mark sensor will emit light rays to scan the detected surface, and can identify the different color marks through receiving different intensity of light reflected back from different colors

[Contact Us](#)



OM3 Fiber Patch Cable Family

Are you using the most reliable colour mark detection

Our new colour mark sensors E3S-DC (photoelectric sensor) and E3NX-CA (fiber amplifier) are ideally suited to these conditions because they incorporate our

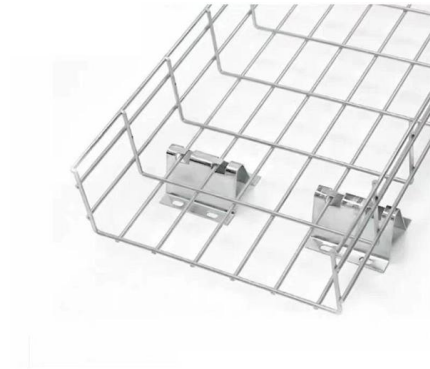
[Contact Us](#)



Photoelectric Sensors , Color Mark Sensor : OPTEX FA GLOBAL

OPTEX FA provides cost effective color mark sensors.

[Contact Us](#)



Features of Color sensor , Sensor Basics: Introductory

Detection based on "Light" Features of Color sensor A color sensor is a type of "photoelectric sensor" which emits light from a transmitter, and then detects the

[Contact Us](#)



Photoelectric color mark sensor

Find your photoelectric color mark sensor easily amongst the 13 products from the leading brands (Nidec-SHIMPO, OMRON, SENSOPART,) on DirectIndustry,

[Contact Us](#)



Digital Color Mark Photoelectric Sensor

Ideal for industries such as printing, packaging, and textiles, this color mark sensor is well-suited for tasks such as mark positioning, cutting, and labeling. It significantly

[Contact Us](#)





Photoelectric Sensors

Choosing the right Banner Engineering photoelectric sensor doesn't have to be hard: follow along and discover the strengths of each sensor and which one to use for your application needs.

[Contact Us](#)



R55F Series Fiber optic color mark sensor

The R55F fiber optic sensor was developed to provide simplicity of operation and access to tight areas for color mark (registration) sensing applications. The R55F is a technological advancement from

[Contact Us](#)

SmartEye Color Mark II CMSB-1BF1

The SMARTEYE® COLORMARK(TM) II Registration Mark Sensors combine unique color perception ability with very high speed response. Many important features

[Contact Us](#)



Smart Color Mark Photoelectric Sensor with ESP32

Smart Color Mark Photoelectric Sensor with ESP32- You all must have seen and used many color sensors before, but the DFRobot's Smart Color Mark

[Contact Us](#)



E3S-DC Color Mark Photoelectric Sensor/Features

The high luminance white LED of the Fiber Amplifier Unit, and the high luminance RGB three-color LEDs and high efficiency optical system design of the

[Contact Us](#)



E3ZM-V Color Mark Detection Compact Photoelectric

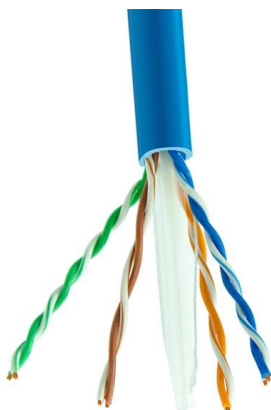
Although the E3ZM-V is only 11 × 21 × 32 mm, it uses a coaxial optical system. Even if the sensing object is inclined, reflected light is captured with the

[Contact Us](#)

SMARTEYE MARK II High Performance Sensor , TRI

High Performance Sensor with "Enhanced Dynamic Range"High-resolution photoelectric sensor capable of performing sensing tasks most other sensors

[Contact Us](#)



E3S-DC Color Mark Photoelectric Sensor/Features

The high luminance white LED of the Fiber Amplifier Unit, and the high luminance RGB three-color LEDs and high efficiency optical system design of the Photoelectric Sensor deliver high

[Contact Us](#)



Contrast Sensor (Color mark)

Contrast Sensor (Color mark) SERF1 Smart eye MARK II - Photoelectric sensor with Red LED, F1 Fiber optic Optical Block, Adjustment Type: Potentiometer, NPN and PNP Output, 12 to 24 VDC

[Contact Us](#)



Smarteye Colormark Sensor

Tri-Tronics Colormark II photoelectric sensor, white light source, fiber optic mode (fibers sold separately), 24 vdc, NPN & PNP outputs, M12 quick disconnect Tri-Tronics

[Contact Us](#)

Color Sensors & Mark Sensors , Photoelectric Sensors

Passive, fiber-type color sensor that identifies RGB composition values of color proportions by analyzing light into the three primary colors: red, green, and blue.

[Contact Us](#)



Photoelectric Sensors , Color Mark Sensor , Digital

3-color (red, green, blue) light source switching function Versatile and high precision Thanks to a built-in RGB 3-color light source and because the optimum light

[Contact Us](#)



Omron E3S-DC/E3NX-CA Series Color Mark Sensors Brochure

Color Mark Photoelectric Sensor (E3S-DC): Color Fiber Amplifier Unit (E3NX-CA): The incident light range in which no The optimal light intensity--with just saturation occurs--no adjustment required

[Contact Us](#)



Color Mark Sensor, Smart Color Mark Photoelectric Sensor

Chyestic color mark sensors accurately detect an object's color using electrical signals. They are multifunctional, adjustable, responsive, precise, and stable.

[Contact Us](#)

2 Registration Mark Photoelectric Sensors

Registration Mark Sensor SMARTEYE® COLORMARK™ II Registration Mark Sensor combines unique color perception ability with very high speed response. Many important features have been

[Contact Us](#)



COLORMARK(TM) II Contrast Sensor for Registration

Color perception is a must for detecting registration marks printed in a wide variety of colors. The SMARTEYE® COLORMARK(TM) II with different light sources detects

[Contact Us](#)



Color Sensors & Mark Sensors , Photoelectric Sensors

INDUSTRIAL SENSORS Color Sensors & Mark Sensors Color sensors operate by sensing the reflected light from internal red, green, and blue (RGB) LED

[Contact Us](#)



Contact Us

For datasheets, pricing, or custom fiber access solutions, please visit:
<https://frindel.es>