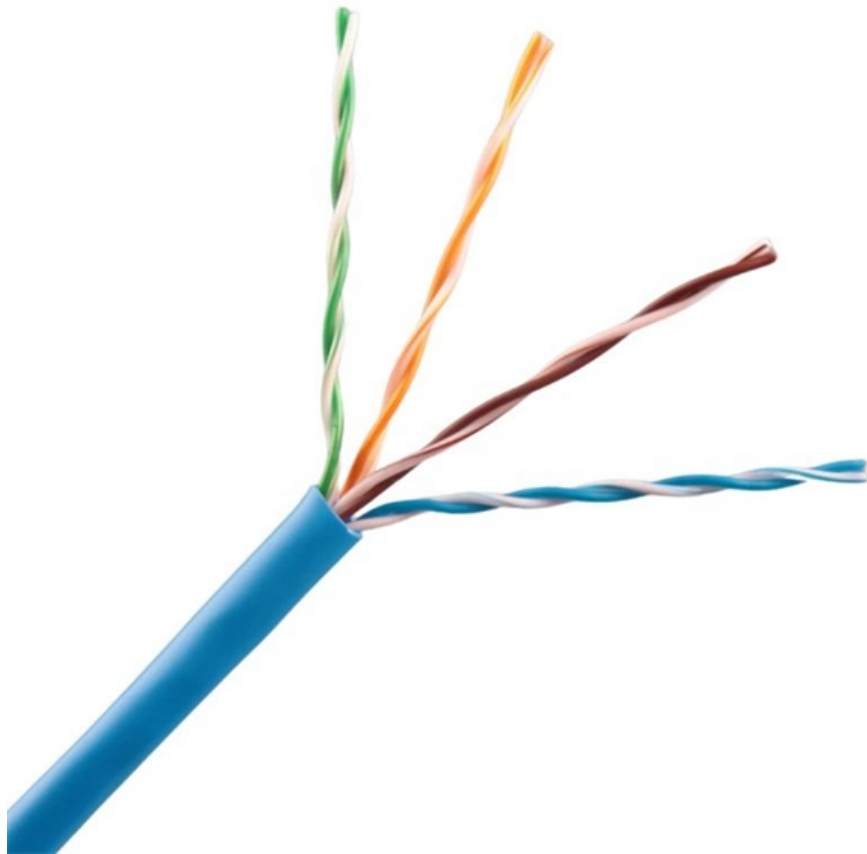


Chelsio optical module





Overview

The Chelsio SM100G-IR4 Compatible QSFP28 Optical Transceiver Module is designed for use in 100GBASE Ethernet throughput up to 2km over single mode fibre (SMF) with duplex LC connectors. The 100 Gigabit Ethernet signal is carried over four wavelengths at 1271, 1291, 1311, 1331 nm. EdgeOptic's SM25G-SR compatible is a Chelsio-coded 25GBASE-SR SFP28 transceiver built as a direct replacement for the Chelsio SM25G-SR. It ships with Chelsio-recognized EEPROM vendor and part-number strings so Chelsio T6-series 25G Unified Wire adapters identify the optic as a native Chelsio.



Chelsio optical module



Chelsio SM10G-SR Compatible 10Gbps SFP+ 10GBASE-SR 850nm

Chelsio SM10G-SR compatible optical transceiver is a dual fiber 10Gbps Small Form-factor Pluggable SFP+ module for use in 10GBASE Ethernet network. SFP+ SR provides 10.31Gb/s throughput up to

[Contact Us](#)

Chelsio SM100G-SR Product Brief

Overview Chelsio's SM100G-SR 100Gb/s QSFP28 short reach transceiver modules are designed for 100 Gigabit Ethernet links over multimode fiber and certified for use with Chelsio's 100-Gigabit

[Contact Us](#)



Chelsio SM100G-SR Compatible 100GBASE-SR4

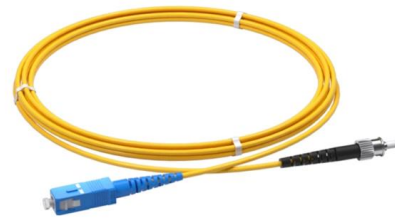
The Chelsio SM100G-SR Compatible QSFP28 Optical Transceiver Module is

[Contact Us](#)



SM100G-LR 100G Long Reach QSFP28 LR4 Optic Module (10km)

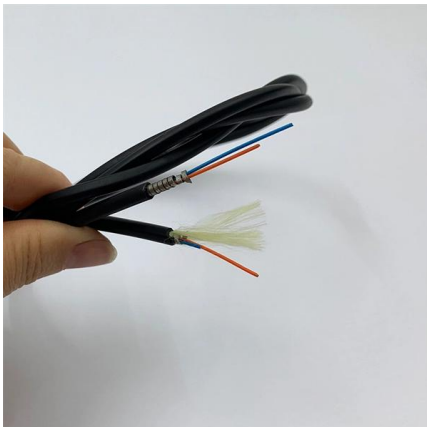
Amazon : CHELSIO COMMUNICATIONS SM100G-LR 100G Long Reach QSFP28 LR4 Optic Module (10km) : Electronics Amazon Return Policy: You may return any new computer



Chelsio SM10G-LR Compatible 10Gbps SFP+ 10GBASE-LR 1310nm

Chelsio SM10G-LR compatible optical transceiver is a dual fiber 10Gbps Small Form-factor Pluggable SFP+ module for use in 10GBASE Ethernet network. SFP+ LR provides 10.31Gb/s throughput up to

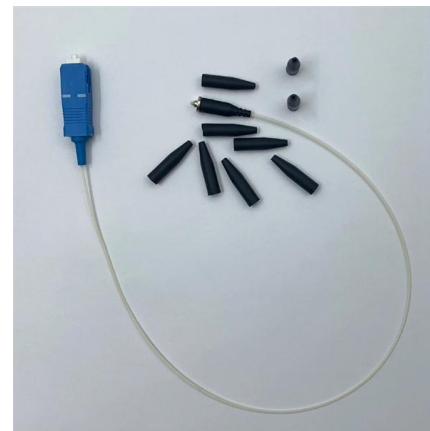
[Contact Us](#)



Chelsio SM100G-LR Compatible 100G QSFP28 LR4 Module

EdgeOptic's SM100G-LR compatible is a Chelsio-coded 100GBASE-LR4 QSFP28 transceiver built on the EdgeOptic 100G-QSFP28-10 platform. Chelsio's SM100G-LR is the long-reach companion to the

[Contact Us](#)



Chelsio SM25G-SR-I Compatible 25GBASE-SR SFP28

Chelsio SM25G-SR-I Compatible 25GBASE-SR SFP28 850nm 100m DOM Duplex LC/UPC MMF Optical Transceiver Module (Industrial)

[Contact Us](#)





Chelsio 10G SFP+ Long Range Optical Module

Chelsio 10G SFP+ Long Range Optical Module - Part ID: SM10G-LR SKU: SM10G-LR Manufacturer: Chelsio Features

[Contact Us](#)



CHELSIO SM100G-SR: 100G Short Reach QSFP28 Optical Module

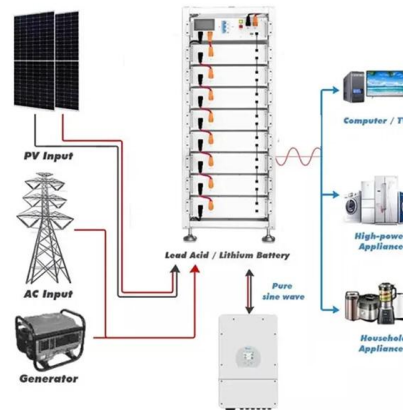
The optical module offers a cost-effective and power-efficient network connectivity solution for high-speed data applications. The Chelsio SM100G-SR optical module is compatible with Chelsio's T6

[Contact Us](#)

Chelsio SM100G-IR4 Compatible 100GBASE-CWDM4 QSFP28

The Chelsio SM100G-IR4 Compatible QSFP28 Optical Transceiver Module is designed for use in 100GBASE Ethernet throughput up to 2km over single mode fibre (SMF) with duplex LC connectors.

[Contact Us](#)



Chelsio 40G short reach QSFP Optic Module - LTT Partners

Chelsio's SM40G-SR 40Gb/s 100m Multimode QSFP+ optical transceivers are designed and certified for use with Chelsio's 40-Gigabit Ethernet Unified Wire Adapters.

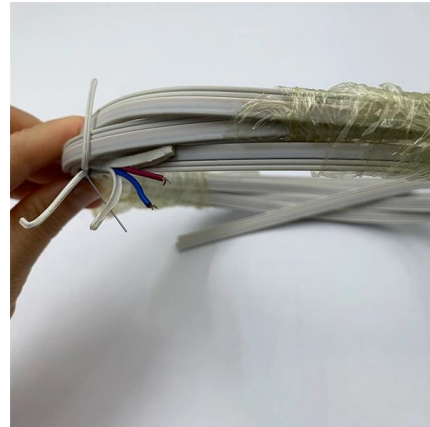
[Contact Us](#)



SM40G-LR: 40G Long Reach QSFP+ Optical Module

Chelsio's SM40G-LR 40Gb/s Long Reach Multimode QSFP+ optical transceivers are designed and certified for use with Chelsio's 40-Gigabit Ethernet Unified Wire

[Contact Us](#)



Chelsio Communications Short Reach SFP+ Optics Module

Chelsio SM10G-SR Short Reach SFP+ Optics Module provides high-speed data transmission over short distances.

[Contact Us](#)

SM10G-LR 10G Long Reach SFP + Optic Module

Amazon : CHELSIO COMMUNICATIONS SM10G-LR 10G Long Reach SFP + Optic Module : Electronics Currently unavailable. We don't know when or if this item will be back in stock.

[Contact Us](#)



SM10G-LR Chelsio , EUR12 , EDGE Optical Solutions

Our compatible Chelsio SM10G-LR module is CE/RoHS certified, it meets product safety standards, and is compliant with SFP+ Multi Source Agreement (MSA) SFF-8432 industry standard. To ensure

[Contact Us](#)



SM100G-LR: 100G Long Reach QSFP28 Optical Module

Chelsio's SM100G-LR 100Gb/s Long Reach QSFP28 optical transceivers are designed and certified for use with Chelsio 100-Gigabit Ethernet links up to 10km.

[Contact Us](#)



Chelsio SM25G-SR Compatible , EUR14.53 , EDGE Optical Solutions

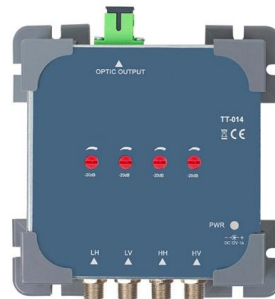
Chelsio SM25G-SR compatible 25GBASE-SR SFP28 for Chelsio T6225-CR, T6225-LL-CR, T6425-CR and T6-series 25G Unified Wire adapters. 100m OM4, DOM. EUR14.53.

[Contact Us](#)

SM25G-LR: 25G Long Reach SFP28 Optical Module

Chelsio's SM25G-LR 25Gb/s SFP28 long reach transceiver modules are designed for 25 Gigabit Ethernet links over single mode fiber up to 10 km and certified for

[Contact Us](#)



Chelsio SM100G-SR Compatible 100GBASE-SR4

The Chelsio SM100G-SR Compatible QSFP28 Optical Transceiver Module is designed for use in 100GBASE Ethernet throughput up to 70m over OM3 and

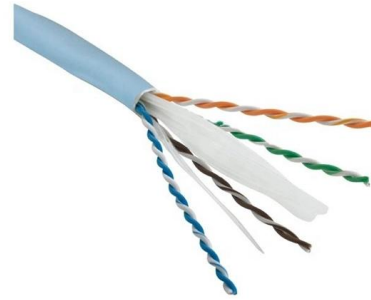
[Contact Us](#)



Módulo transceptor/Transceiver óptico compatible con Chelsio

Chelsio SM25G-SR Compatible 25GBASE-SR SFP28 Optical Transceiver Module for Data Center and Telecom (MMF, 850nm, 100m, LC, DOM) Chelsio SM25G-SR compatible SFP28 transceiver adopts

[Contact Us](#)



Chelsio Compatible SM100G-SR Datasheet , FluxLight

Chelsio Compatible SM100G-SR Overview The SM100G-SR is a parallel 100 Gbps Quad Small Form-factor Pluggable (QSFP28) optical module. It provides increased port density and total system cost

[Contact Us](#)

SM10G-SR: 10G Short Reach SFP+ Optical Module

Chelsio's SM10G-SR 10Gb/s 850nm Multimode SFP+ optical transceivers are designed and certified for use with Chelsio's 10-Gigabit Ethernet Unified Wire

[Contact Us](#)



Chelsio SM40G-SR Compatible 40GBASE-SR4 QSFP

Chelsio SM40G-SR Compatible 40GBASE-SR4 QSFP+ Optical Transceiver Module (MMF, 850nm, 150m, MTP/MPO, DOM) The QSFP+ module adopts 12 Fibers

[Contact Us](#)



Chelsio SM40G-SR Compatible 40GBASE-SR4 QSFP

Chelsio SM40G-SR Compatible 40GBASE-SR4 QSFP+ Optical Transceiver

[Contact Us](#)



Chelsio SM25G-SR Compatible , EUR14.53 , EDGE Optical Solutions

SM25G-SR is Chelsio's ordering code for a 25Gb/s SFP28 short-reach optical module certified against the Chelsio T6-series 25G Unified Wire adapter range.

[Contact Us](#)

Contact Us

For datasheets, pricing, or custom fiber access solutions, please visit:
<https://frindel.es>