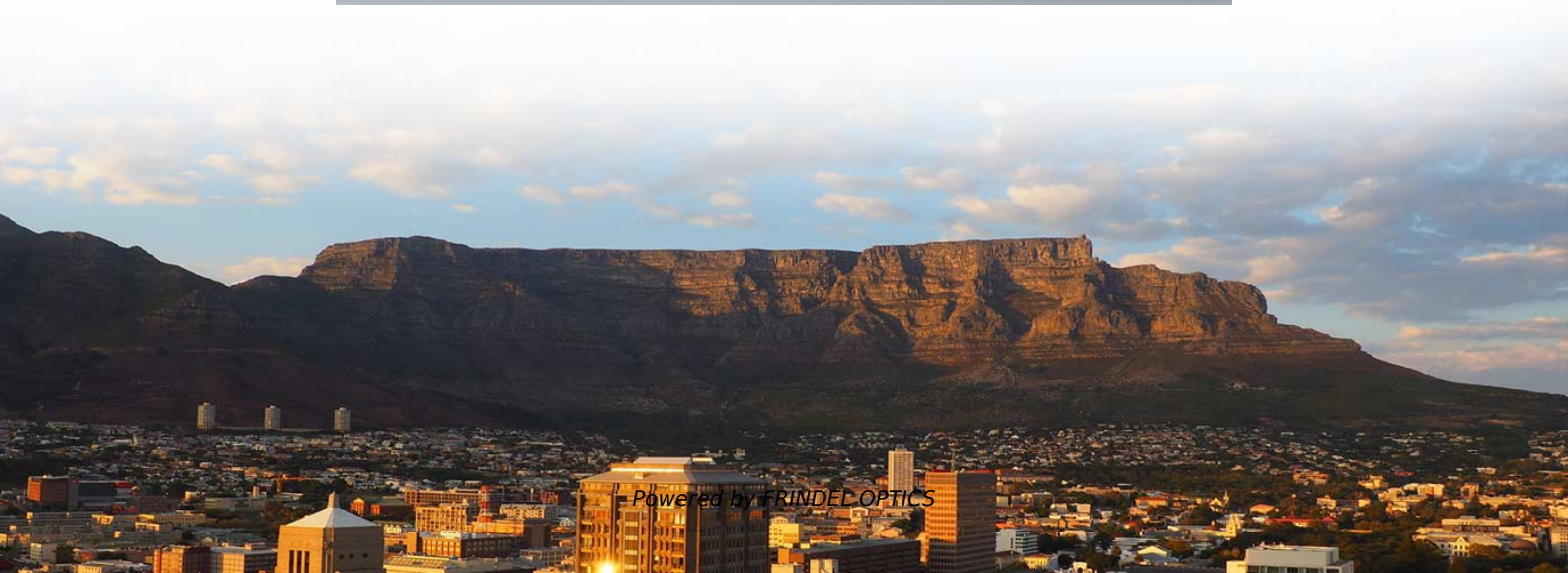
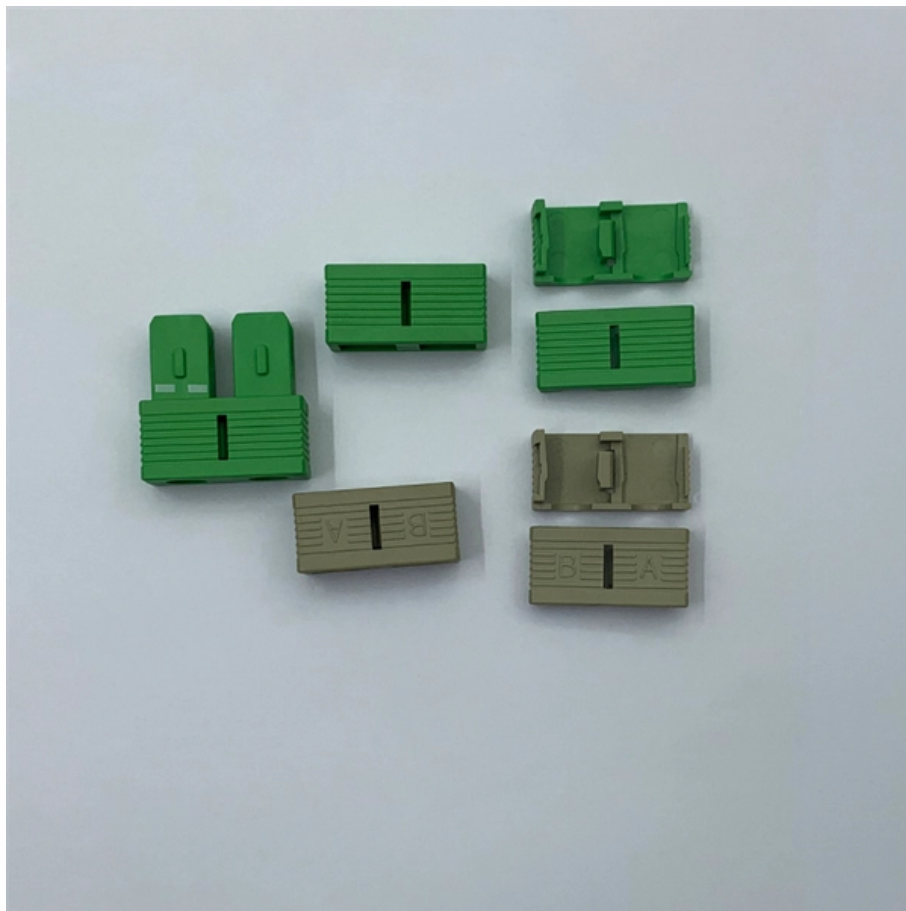


Certification Methods for Low-Voltage Complete Equipment





Overview

Low-voltage electrical products require certifications such as CE, CB Scheme, UL, and VDE to ensure safety and compliance with global trade standards. This not only builds consumer confidence but also ensures regulatory compliance and gives manufacturers the opportunity to expand. Our LVD compliance services allow you to confidently access your EU and EEA target markets. What is the Low Voltage Directive 2014/35/EU?

The European Union's Low Voltage Directive (LVD) ensures that electrical equipment within certain voltage limits includes protection against electric shock and. Streamline your path to EU, EEA, and UK market access with Element's comprehensive Low Voltage Directive (LVD) testing services. As an accredited IECEE CB Scheme member, we reduce costs and accelerate certification while ensuring your electrical products meet all safety requirements for voltage.



Certification Methods for Low-Voltage Complete Equipment



RG 105 Inspection of Low Voltage Electrical Installations

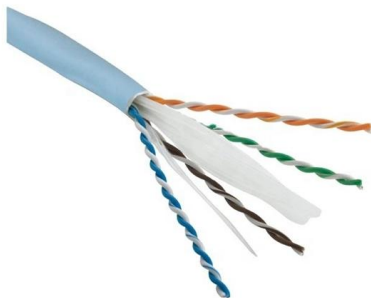
The field of inspection covered by this publication is low voltage electrical installations and associated electrical equipment as defined in BS 7671. 1.2 This publication has been produced by UKAS and

[Contact Us](#)

Certificate TR CU 004/2011 "Safety of Low Voltage

Looking for Certificate TR CU 004/2011 On Safety of Low Voltage Equipment by MASTCERT? Bilingual Local Support. Wide Range of Expertise. Own testing

[Contact Us](#)



Low Voltage Equipment Certification in the EAEU: What

One of the most critical points is choosing the correct conformity assessment route. There are two options: Certificate of Conformity and Declaration of Conformity.

[Contact Us](#)

CE GUIDE

Audio and video equipment Information technology equipment Ordinary office machinery Low-voltage switchgear and control gear Electric motors The following types of high-voltage electrical equipment:



How to Obtain an LVD CE Certificate for Low Voltage Electrical Equipment

Understand how to obtain an LVD CE certificate for low voltage electrical equipment and ensure compliance with EU safety standards. Kayra Certification offers expert guidance for the certification

[Contact Us](#)

Low Voltage Directive (LVD) Testing

The Low Voltage Directive 2014/35/EU requires that electrical equipment provides a high level of protection for health and safety of persons, domestic animals, and

[Contact Us](#)



Low Voltage Directive 2014/35/EU - CE-Mark

Products with lower nominal voltages are subject to the General Product Safety Directive. A few exceptions for equipment and areas are listed in Annex II of the directive (e.g., electrical parts of

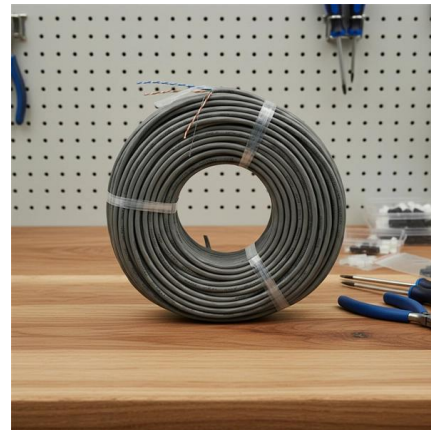
[Contact Us](#)



UL Certification Steps for Low-Voltage - Electrical Trader

While the process may seem complex, early preparation and collaboration with UL can save time and money. Certification not only boosts marketability but also ensures safety and

[Contact Us](#)



UL Certification Steps for Low-Voltage - Electrical Trader

UL certification for low-voltage equipment isn't legally required in the U.S., but it's crucial for market access and safety assurance. It ensures your equipment meets safety standards, satisfies

[Contact Us](#)



Low Voltage Directive 2014/35/EU Testing Services , TÜV SÜD

What Is The Low Voltage Directive? Why Is A CE Low Voltage Mark Important? TÜV SÜD Makes It Easy to Comply with The Low Voltage Directive LVD Testing and Documentation Services from TÜV SÜD. Affixing a CE Low Voltage Directive mark to your products ensures free access to nearly 30 countries in the EU and EEA. Without the CE Mark, you cannot legally sell to consumers within the bloc and could potentially face fines, product recalls and even be banned



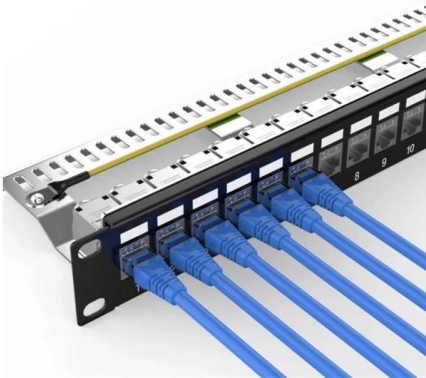


from one of the world's biggest markets. See more on [tuvsud danem-test](#)

Low Voltage Directive (LVD) Testing & Certification

LVD testing and certification support for CE marking, electrical safety, technical documentation, conformity assessment, and EU market access.

[Contact Us](#)



Low Voltage Directive (2014/35/EU)

Read this guide to learn what you need to know about the low Voltage Directive (2014/35/EU), and how to ensure your products comply.

[Contact Us](#)

Low Voltage Directive 2014/35/EU Testing Lab , TÜV SÜD

The EU's Low Voltage Directive (LVD) 2014/35/EU ensures electrical equipment within certain voltage limits includes protection against electric shock & other

[Contact Us](#)



EN 61439 Certification for Low-Voltage Switchgear Assemblies

The electrical industry is a critical sector that demands high levels of safety and reliability to prevent accidents, damage to equipment, and financial losses. One essential aspect of ensuring the safe

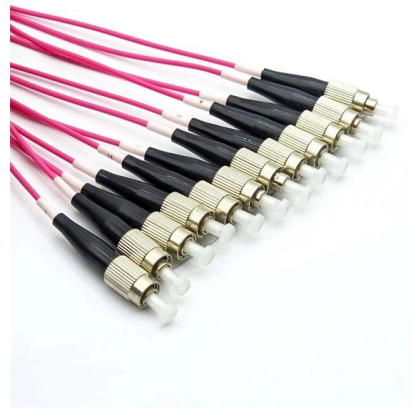
[Contact Us](#)

CE marking Electrical Equipment



Our electrotechnical engineers at Certification Company have the necessary skills and expertise at their disposal, in order to fully perform the entire CE certification

[Contact Us](#)



EAC Certification for Low Voltage Equipment , TÜV

In 2011, the Technical Regulation TR CU 004/2011 'On the safety of low-voltage equipment' was adopted. It establishes requirements for low-voltage equipment,

[Contact Us](#)



CE Low Voltage Directive LVD Testing & Certification Services

Low Voltage Directive LVD ensures safe electrical equipment within voltage limits for products sold in the EU. We offer testing & CE marking services.

[Contact Us](#)



What International Certifications Should Low-Voltage Electrical

Your essential guide to certifications for low-voltage electrical products. Learn the requirements for CE, UL, CB Scheme, and VDE to ensure safety, compliance, and global market

[Contact Us](#)



Low Voltage Directive

Testing to harmonized, international and national standards- or specifier requirements. Assessment for compliance with the low voltage directive, including

[Contact Us](#)



Low Voltage Electrical Equipment

The "Electrical Equipment" means any equipment designed for use with a voltage rating of between 50 and 1000 V for alternating current (A.C.) and between 75 and 1500 V for direct current (D.C.).

[Contact Us](#)



Five Reason PV Modules Fail Testing

The Low Voltage Directive (LVD) 2006/95/EC seeks to ensure that electrical equipment within certain voltage limits both provides a high level of protection for European citizens and enjoys a Single

[Contact Us](#)

Motor protection controller



Low Voltage Directive (LVD) Testing

We offer third-party qualification and support throughout the compliance process, from design advice to final certification. Achieve CE marking for EU/EEA markets

[Contact Us](#)



LOW VOLTAGE DIRECTIVE(LVD) - CE Marking

Reach full compliance and certification prior to product placement. Gain competitive advantage and greater market access with certification marks from an international Notified Body.

[Contact Us](#)



How to Obtain an LVD CE Certificate for Low Voltage Electrical

Understand how to obtain an LVD CE certificate for low voltage electrical equipment and ensure compliance with EU safety standards. Kayra Certification offers expert guidance for the certification

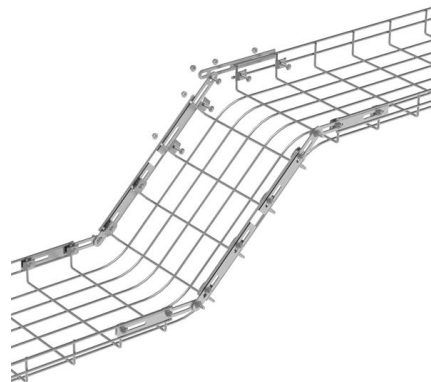
[Contact Us](#)



Understanding the Low Voltage Directive 2014/35/EU Requirements

In this article, we'll explore the key principles of the Low Voltage Directive (LVD), the certification process, and the benefits of CE marking, so you can ensure your products meet all necessary

[Contact Us](#)



Medium Voltage Distribution Equipment Testing and

The importance of getting a medium voltage certification In the past, equipment operating above 600 volts (V) was generally considered to be under the control of

[Contact Us](#)



Contact Us

For datasheets, pricing, or custom fiber access solutions, please visit:
<https://frindel.es>