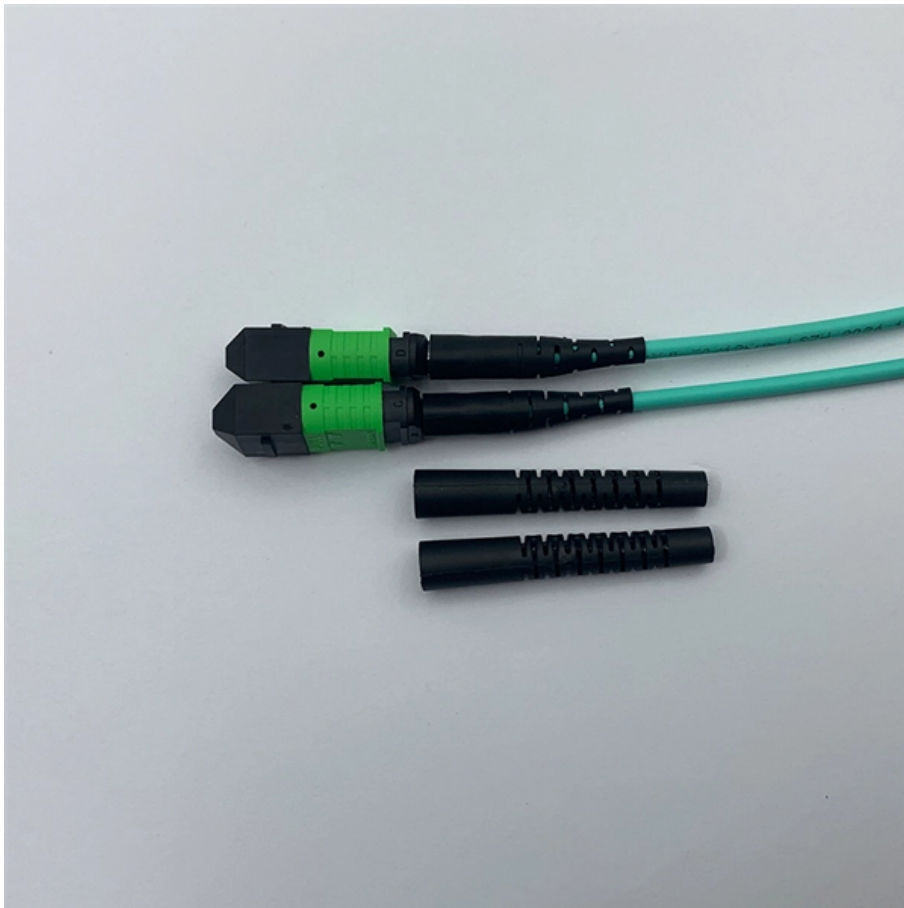


Ceramic Fuse Standard





Ceramic Fuse Standard



Ceramic Cartridge Fuses Selection Guide: Ratings, Types & Uses

Learn how to select the right ceramic cartridge fuses by current, voltage, breaking capacity, and application. A practical guide for industrial and power systems.

[Contact Us](#)

Electrical Ceramics - High-Performance Components

MV Fuse Bodies Our MV fuse bodies are manufactured from high-quality C130 alumina porcelain using a high-precision extrusion process, while the associated

[Contact Us](#)



Ceramic Fuse vs Glass Fuse

If you need a new fuse and can't decide between a ceramic fuse and a glass fuse then check the pointers below.

[Contact Us](#)



Ceramic Fuse Cartridge Fuses - Mouser

Ceramic Fuse Cartridge Fuses are available at Mouser Electronics. Mouser offers inventory, pricing, & datasheets for Ceramic Fuse Cartridge Fuses.

[Contact Us](#)



Glass vs. Ceramic Fuses: What's the Difference and

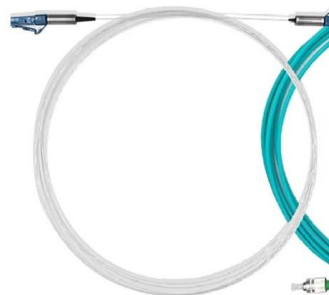
Ceramic fuses, in contrast, are built for more robust applications. They have a ceramic tube instead of glass, which can withstand higher temperatures

[Contact Us](#)

CERAMIC FUSE , Fuses , Products , Eled

For over 25 years the ELED company produces and markets a full range of automotive fuse components. Based in Europe, ELED is responsible for product

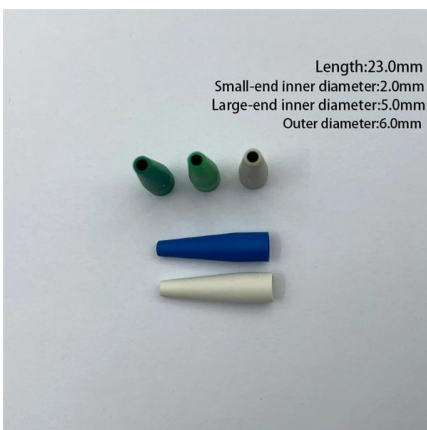
[Contact Us](#)



Understanding Ceramic Fuses: Protection and Applications

Ceramic fuses safeguard electronics from overcurrent with durability and reliability, ideal for various applications.

[Contact Us](#)





Electrical Ceramics - High-Performance Components

Based on British Standard certified ceramic formulations, we manufacture a wide variety of extruded fuse bodies. These can be used in the UK and many other

[Contact Us](#)



Selection Guide Fuse Characteristics, Terms and Consideration Factors

Fuses listed in accordance with UL/CSA/ANCE 248 are required to have an interrupting rating of 10,000 amperes at 125V, with some exceptions (See STANDARDS section) which, in many applications,

[Contact Us](#)

Fuseology

Today, we are a global company, offering a diverse and extensive product portfolio--fuses, semiconductors, polymers, ceramics, relays, sensors, and more--serving the electronics,

[Contact Us](#)



Glass and Ceramic Fuses

These types fuses come in 3 standard measurements as well as with axial leads. If you are replacing axial fuses you can use a larger fuse size to

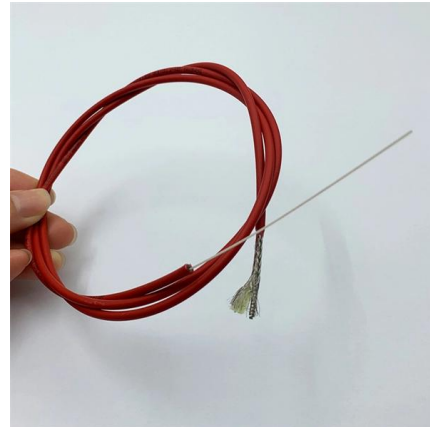
[Contact Us](#)



IEC fuse standards (IEC 60269)

IEC 60269-3: This section deals with fuses used primarily in residential and similar environments, specifying standards for fuses that are typically lower capacity and intended for less demanding

[Contact Us](#)



Cartridge, Ceramic Fuses , Circuit Protection , DigiKey

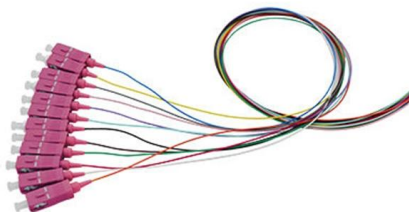
Shop DigiKey's large in-stock selection of Fuses. View inventory, pricing and order now for same day shipping!

[Contact Us](#)

Electrotechnical ceramics

The bodies of fuses, sockets and caps, as well as other insulation segments are manufactured by quartz porcelain C111 in narrow dimensional deviations, allowing an automated assembly processes.

[Contact Us](#)



Fuseology

Many end-product standards require fuses that comply with industry safety and performance standards, and a large number of our fuses have obtained such compliance.

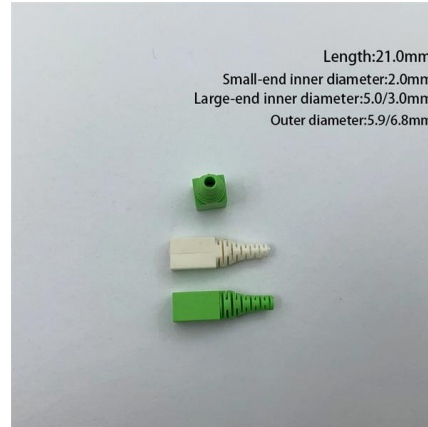
[Contact Us](#)



Surface-Mount Fuses Fundamentals

Multi-layer Design for Chip Fuses ass-ceramic absorption material. When the fuse elements open, there is more material for the vaporizing fuse metals to absorb into, resulting in a very efficient and eff h

[Contact Us](#)



Characteristics of Fuses for North American and Global

Fuse Characteristics Interpower offers fuses for both North American and global uses. It is important to note that while the terminology is similar for North

[Contact Us](#)

Ceramic Fuse Sizes: Key Ratings & Dimensions

Discover standard ceramic fuse sizes, voltage/current ratings, and speed types (F/T). Find the right fit for automotive, industrial, or solar applications. Click to explore sizing charts and

[Contact Us](#)



The Shocking Truth About Ceramic Fuses

Struggling with ceramic fuses in your Brisbane home? Discover why upgrading to modern circuit breakers is a must for safety and compliance in our

[Contact Us](#)



Ceramic Fuses: Protect Your Home's Electrical Safety

Ceramic fuses are a critical component of your home's electrical safety system, offering reliable protection against overcurrents and short circuits. By understanding how these fuses work, their

[Contact Us](#)



Ceramic Fuses

Their opaque ceramic bodies do not visibly indicate when the fuse has blown, so functionality is typically verified using a multimeter or ohmmeter. These fuses are valued for their durability and consistent

[Contact Us](#)

Selection Guide Fuse Characteristics, Terms and Consideration Factors

Fuse Characteristics, terms and Consideration Factors The purpose of this introductory section is to promote a better understanding of both fuses and common application details within circuit design.

[Contact Us](#)



OptiFuse TCD-5A Fuse, IEC, 5 x 20mm, Ceramic, Slow-Blow, 250V, 5A

20mm long and 5mm in diameter, this fuse is time lag with a ceramic body and is designed to meet European IEC standards (as well as being UL Recognized). Available with or without axial leads

[Contact Us](#)



Ceramic fuses and their role in high-temperature applications

Discover the advantages of ceramic fuses for high-temperature applications, including their durability and suitability for industrial, automotive, and electronic environments. Learn about the

[Contact Us](#)



How to Choose the Right Tube Fuse [Expert Guide + PDF]

Discover versatile glass & ceramic tube fuses [How to choose right size, material & response time] for reliable industrial circuit protection.

[Contact Us](#)



IEC and British Standard Fuses

The standard range of fuses for low voltage industrial and general purpose applications meet the requirements of BS 88 and IEC 60269. By using advanced fuse technology, current ratings up to

[Contact Us](#)



Contact Us

For datasheets, pricing, or custom fiber access solutions, please visit:
<https://frindel.es>