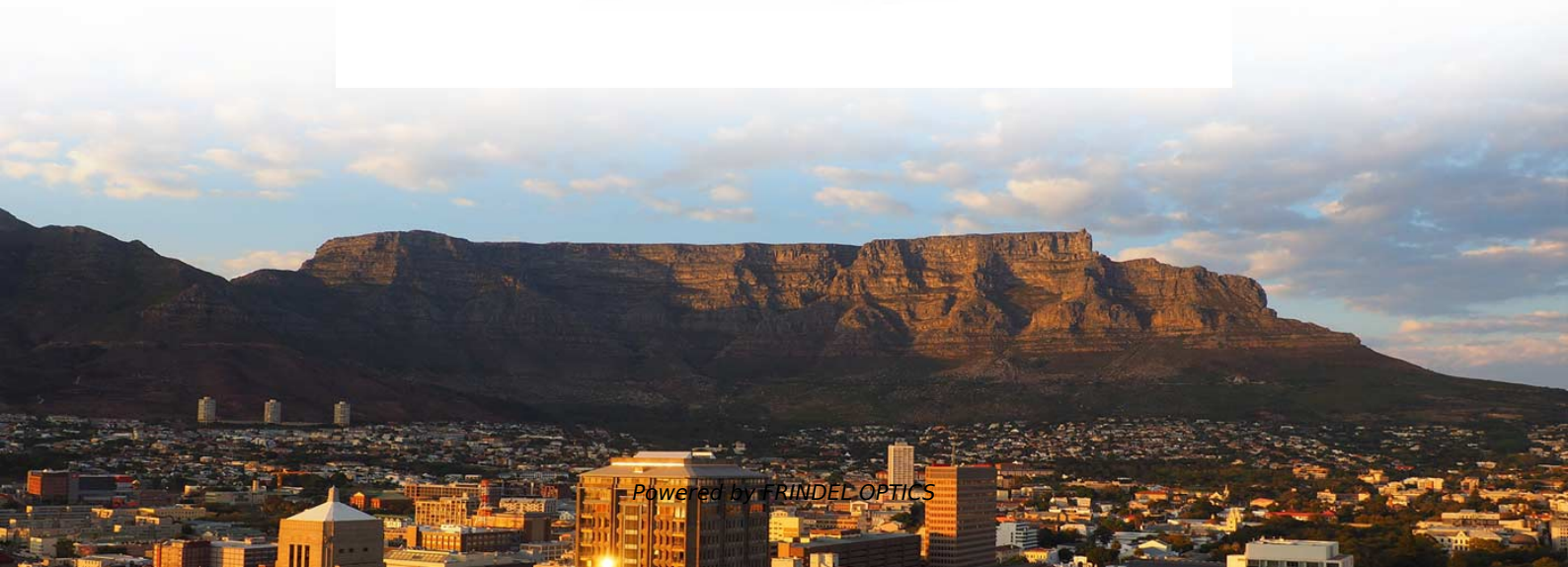


Can two 1310nm optical modules be connected side-by-side





Can two 1310nm optical modules be connected side-by-side

Everything You Need to Know About 1310nm Optical



Choosing the right fiber type, typically single-mode, enhances the performance of 1310nm modules, allowing for longer transmission distances.

[Contact Us](#)

Bidirectional SFP Selection Guide for Single-Fiber Links

Single-fiber communication has become increasingly common in environments such as campus networks, metropolitan access networks, and building-to-building connections. In these scenarios,



[Contact Us](#)



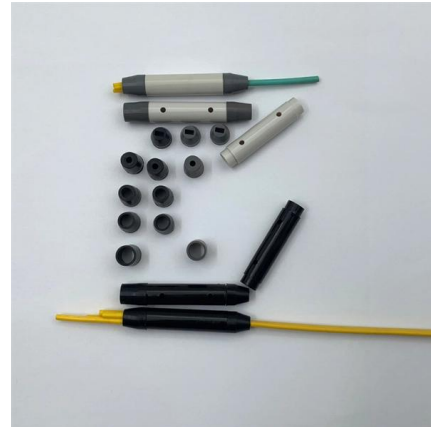
The Key Differences Between 1-core, 2-core, Single

o In optical modules, "core" refers to the light-transmitting channel in the fiber. A 1-core module uses a single fiber core for data transmission, while a 2

[Contact Us](#)

100GE/OTU4 CFP4 LR4 1310nm 10km Optical Transceiver Module

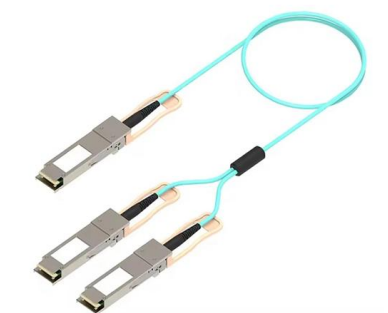
The module converts 4 input channels of 25Gb/s electrical data to 4 channels of LAN WDM optical signals and then multiplexes them into a single channel for 100Gb/s optical transmission.



What is difference between 1310nm and 1550nm?

In standard Singlemode cable assembly, the two wavelengths used for Insertion Loss testing are 1310nm and 1550nm. All Singlemode fibers work very similarly in

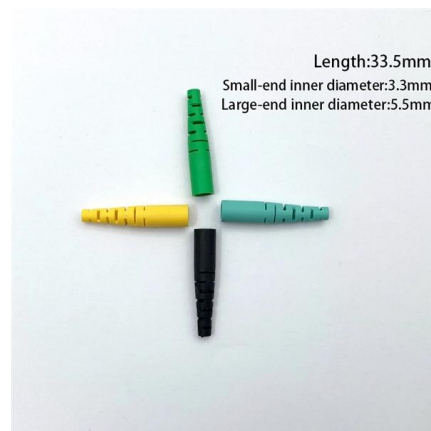
[Contact Us](#)



Guidelines for Interoperability and Compatibility of

Q: Can two optical modules from different brands/suppliers be connected to each other? A: If the wavelength, speed, and fiber type of the module are the same and

[Contact Us](#)



Lumentum shows AI data center optics at OFC 2026 , LITE Stock News

The module provides 4x400 Gbps data connectivity over single-mode fiber optics and 8x200 Gbps electrical interface on the host side. Its 4x400 Gbps design leverages Lumentum's

[Contact Us](#)

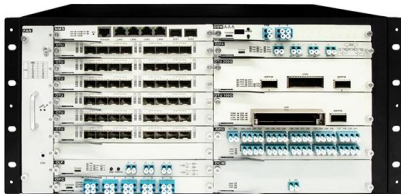




Technical Characteristics Of 10G Optical Modules With

There are three wavelength windows for 10G optical module communication applications, namely the 850nm window, 1310nm window, and

[Contact Us](#)



Everything You Need to Know About 1310nm Optical

1310nm optical module offers reliable, cost-effective data transmission for metro, campus, and enterprise networks. Compare performance, reach, and

[Contact Us](#)

1.25Gb/s Bi-Directional SFP Transceiver, SMF, 1310nm-TX/1550nm

two versions of the series 1G SFP BiDi optical transceiver modules for different applications. The Standard grade (0~70oC) is used for common commercial applications, and the Industrial grade (

[Contact Us](#)



BiDi SFP: The Complete Guide to Bidirectional SFP Transceivers and

By using Wavelength Division Multiplexing (WDM), BiDi SFP modules transmit and receive data on two different wavelengths, cutting fiber usage in half without sacrificing performance.

[Contact Us](#)



SFP Wavelength Guide: 850nm vs. 1310nm vs. 1550nm

Choosing the wrong wavelength can result in immediate link failure, unstable performance, or insufficient optical margin. The three dominant SFP

[Contact Us](#)



10GBASE-LR SFP+ 1310nm 10km Transceiver Datasheet , FS

Test Assured Program FS truly understands the value of compatibility and interoperability to each optics. Every module FS provides must run through programming and an extensive series of

[Contact Us](#)

Pluggable Optical Module Market Research Report 2034

Pluggable Optical Module Market Outlook 2025-2034 The global pluggable optical module market was valued at \$9.8 billion in 2025 and is projected to reach \$26.4 billion by 2034, expanding at a

[Contact Us](#)



1300nm and 1310nm wavelengths in Fiber Optic Communications

I would like to know if there is any differences between Optical interfaces using 1310nm or 1300nm. Can a 1310nm interface be used with a 1300nm interface? Please help.

[Contact Us](#)



Complete Guide to Pluggable Optical Transceivers -

Complete Guide to Pluggable Optical Transceivers Fundamentals & Core Concepts
What are Pluggable Optical Transceivers?
Pluggable optical

[Contact Us](#)



Applications of 1310nm Optical Modules in Modern Networks

In modern telecommunications, 1310nm Transceivers are often used for backhaul (or "bearer") links in 5G networks, transporting high-bandwidth traffic between cell towers and

[Contact Us](#)

Understanding 1310nm Fiber: A Comprehensive Guide

Q: Can I use single mode and multimode applications with a 1310 nm Fiber Optic Cable?
A: Although predominantly known for their ability to work over

[Contact Us](#)



Understanding 1310nm Fiber: A Comprehensive Guide

Explore the complexities of 1310nm fiber wavelengths in this comprehensive guide. Learn about fiber optics, optical transmission, and more.

[Contact Us](#)



Cisco 10GBASE SFP+ Modules Data Sheet

The Cisco 10GBASE SFP+ modules give you a wide variety of 10 Gigabit Ethernet connectivity options for data center, enterprise wiring closet, and

[Contact Us](#)



Can 1310nm be used for multimode?

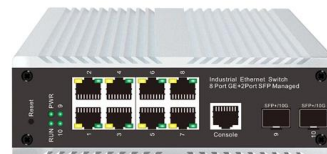
Yes, 1310nm can be used for multim optical communication. This wavelength is commonly used for both single-mode and multimode fiber optic systems. However, it is important to note that

[Contact Us](#)

What is difference between 1310nm and 1550nm?

Can optical modules with wavelengths of 1310nm and 1550nm be connected? Taking into account the different transmission loss and dispersion in the optical fiber,

[Contact Us](#)



Cisco Compatible Coherent VCSEL & Broadcom DSP

Yes, 800G Twin-Port 2xSR4 with two OM4 MPO-12/APC patch cables can be connected to two 400G SR4 optical modules. Q:

[Contact Us](#)



Single Mode SFP Transceiver: Complete Guide Explained

From a technical standpoint, a single mode SFP transceiver supports a small fiber core (approximately $9/125\mu\text{m}$) and operates at specific wavelengths--most commonly 1310nm or 1550nm --to achieve

[Contact Us](#)



Technical Characteristics Of 10G Optical Modules With

Technically, 10G optical modules with 1310nm wavelength utilize uncooled DFB lasers, resulting in a lower cost. The output optical power of such

[Contact Us](#)

1310nm Single Mode Fiber Optical Transceivers Explained

A 1310nm single mode fiber optical transceiver is one of the most widely used optical transceivers in modern fiber-optic networks, especially for short-to-medium distance transmission over single-mode

[Contact Us](#)



Optical Link Budget Calculation for SFP Modules Explained

By understanding and accurately calculating the optical link budget, engineers and network designers can optimize their SFP deployments, select the right modules for specific fiber types, and

[Contact Us](#)



GSFP-1310T-20-SMF Tương thích với Dahua: Công nghệ giám sát

In existing security systems, unused fiber capacity can be unlocked by replacing traditional dual-fiber modules with BiDi optics like the GSFP-1310T-20-SMF, effectively doubling link capacity without

[Contact Us](#)



Is 1310nm single-mode or multimode?

A: Theoretically there is no correspondence. For two-dimensional considerations, the two are orthogonal. 1310nm lasers can be single or multiple

[Contact Us](#)

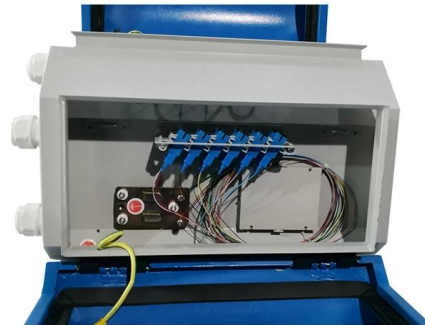
Wall Mount Cabinet Server Racks



64-Port 800G OSFP 51.2T Ethernet 2U Switch for AI

The device can use OSFP-encapsulated 800G optical modules and cables, such as OSFP-800G-2xSR4, OSFP-800G-2xDR4, OSFP-800G-CU*, etc How large a

[Contact Us](#)



Contact Us

For datasheets, pricing, or custom fiber access solutions, please visit:
<https://frindel.es>