

# Can the output of an optocoupler be variable

**More products**

**OUTDOOR CABINET**



**FTTX SOLUTION**



**DATA CENTER**



**FIBER OPTIC COMPONENTS**





## Overview

---

The saturated current transfer ratio is different: it tells you how much collector current you can still get while keeping the transistor in saturation, i. Other available outputs include TRIAC, MOSFET, highspeed, photovoltaic, or photodiodes as well as combinations of them. Q: WHY SHOULD AN OPTOCOUPLER BE USED?

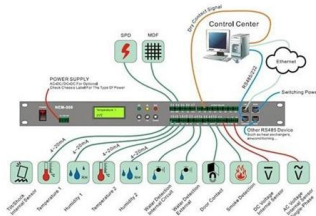
A: Optocouplers are commonly used if two separate circuits need to be isolated from each other for safety or regularity reasons and need. How do I calculate the input at primary from output (of optocoupler) at secondary?

Is there any equation. The primary side is a rectified dc (from ac sin wave 50hz, 0v to 10vdc) so the input varies much.



## Can the output of an optocoupler be variable

---



### OPTOCOUPLER DEVICES AND APPLICATION

OPTOCOUPLER DEVICES AND APPLICATION An optocoupler (or an optoelectronic coupler) is basically an interface between two circuits which operate at (usually) different voltage levels. The key

[Contact Us](#)

### What Is an Optocoupler and How Does It Work?

An optocoupler, also known as a photocoupler or optoisolator, is a semiconductor device designed to transmit information between two circuits. It achieves this signal transfer by utilizing light

[Contact Us](#)



### Optocouplers, Part 2: Parameters and applications FAQ

Part 1 of this FAQ explored the basics of the optocoupler. This part looks at key parameters and some application examples. Q: What are the primary

[Contact Us](#)



### Optocouplers 101: A Comprehensive Guide for PCB

For example, a CTR of 100% means a 1mA input current produces a 1mA output current. Understanding these specs helps PCB designers select the



### Transistor Output Optocouplers Frequently Asked Questions (FAQs)

A: Optocouplers are available in various CTR groups, called bins. They are produced with a variation caused by the sensitivity of the transistor and light emission of the diode.

[Contact Us](#)



### Optocouplers: Working Principles, Applications, and Advantages

For example, an optocoupler can be used to connect a low voltage control circuit to a high voltage power circuit. The input side of the optocoupler can be driven by the low voltage control signal, while the

[Contact Us](#)



### Guidelines for Reading an Optocoupler Datasheet

As an isolator, an optocoupler can prevent high voltages from affecting the side of the circuit receiving the signal. Transferring signals over a light barrier by using an infrared light-emitting diode and a light

[Contact Us](#)





## Optocoupler selection for varying voltage

Hi! Not directly arduino related, but hoping to get some advice on optocoupler selection. I'm trying to replace the Q1 transistor in this circuit, so

[Contact Us](#)



## AN-107.qxd

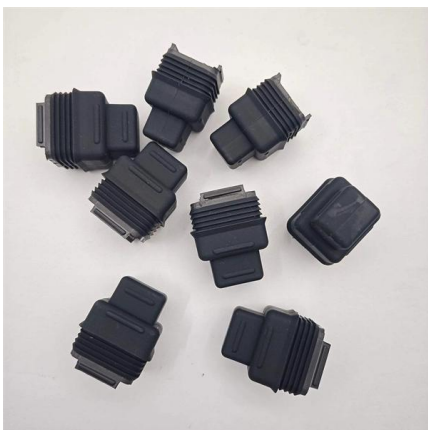
Description The LOC Series (LOC110, LOC111 and LOC112 with one optocoupler per package, and LOC210 and LOC211P with two per package) are linear optocouplers designed to be used in

[Contact Us](#)

## What Is Optocoupler , Opto-coupler Working And

Q: How do you select an appropriate optocoupler for a specific application? A: When selecting an optocoupler, important factors to consider include the required

[Contact Us](#)



## Understanding Optocouplers: Principles, Types and

In a simple isolating optocoupler, a single phototransistor is used at the output stage to detect the light emitted by the LED and convert it back into an

[Contact Us](#)



**opto isolator**

That's basically current gain, and it can be high and wildly variable, especially for unsorted parts. The saturated current transfer ratio is different: it tells you how much collector current

[Contact Us](#)



**Optocouplers / Opto-isolators; Optical Coupling and Isolation**

Optocouplers Optocouplers, also known as Opto-isolators, are devices that provide optical isolation and coupling between two circuits, creating physically- and electrically-isolated signal coupling between

[Contact Us](#)

**Optocouplers Guide: Understanding Types,**

You can use phototransistor optocouplers in applications like microprocessor input/output switching, signal isolation, and power supply

[Contact Us](#)



**Pre-Terminated Patch Panel**

- Multi-application support
- Flexible configuration
- Modular design



Multi-functional Sliding Patch Box, Modular



Modular Sliding Patch Box



Sliding Patch Box, Modular

**Activity: Optocouplers. [Analog Devices Wiki]**

The main purpose of an optocoupler is to prevent high voltages or voltage spikes on one side of the barrier from damaging components or interfering with the

[Contact Us](#)

**What Are Optocouplers and How Do They**



## Work?

Circuit interference ruining your projects? Optocouplers fix that. Let's explore what they are and why they matter. Optocouplers (OC) transmit signals

[Contact Us](#)



## Everything You Need to Know About Optocouplers in

When the LED is energised by an input signal, it emits light that is detected by the photodetector, which then produces an output signal. This optical

[Contact Us](#)

## Find output of optocoupler for variable input , Electronics Forum

The transfer ratio of an optocoupler is the ratio of output current ( through the phototransistor) to the input current (through the LED). The transfer ratio varies enormously and it

[Contact Us](#)



## Make sure your optocoupler is properly biased

If the optocoupler is current-starved, the output voltage will keep rising until the proper amount of LED current conducts through the optocoupler. This results in overvoltage conditions on the output, and is

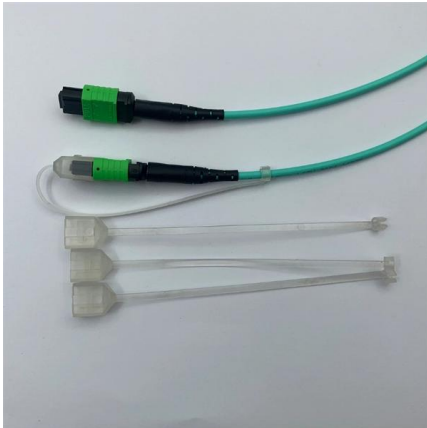
[Contact Us](#)



## Optocoupler Tutorial and Optocoupler Application

Since there is no direct electrical connection between the input and output of an optocoupler, electrical isolation up to 5kV is achieved. Optocouplers

[Contact Us](#)



### Analog Optocouplers - Quick Starter

Since the LCR-0202 analog optocoupler consists of a light-emitting diode (LED) and a photoresistor (LDR/CdS Cell) to provide linear analog optical

[Contact Us](#)

### ANO007 , Understanding Phototransistor Optocouplers

In order to design a functionally robust and reliable application with optocouplers, it is essential to understand not only the device's main parameters and parasitic elements, but also their tolerances

[Contact Us](#)



### Optocoupler Basics: Definition, Types, and Features

An optocoupler is a coupling device used to couple optical signals. It's primarily employed to combine and split signals in optical networks, and it's also referred to

[Contact Us](#)



## Optocoupler Circuits, Working, Characteristics, Interfacing

Minimum values for the CTR may show variations between 20 to 100 % for different optocouplers. The factors that may vary the CTR depends on the

[Contact Us](#)



### Activity: Optocouplers: [Analog Devices Wiki]

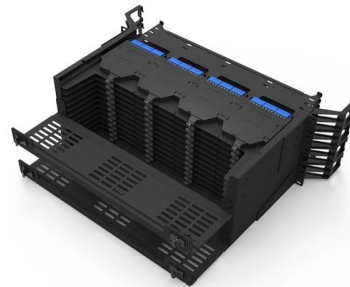
The main purpose of an optocoupler is to prevent high voltages or voltage spikes on one side of the barrier from damaging components or interfering with the

[Contact Us](#)

## Optocoupler Tutorial for Beginners

An optocoupler (or opto-isolator) is a component that transfer signals between circuits using light. In this guide, you'll learn how they work and how you

[Contact Us](#)



### What Is an Optocoupler , ODG

You can, for example, use an optocoupler in order to read the signal from a sensor that outputs 24V. The choosecoupler converts the sensor output

[Contact Us](#)

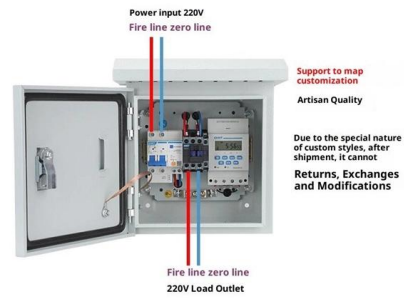


## Using Opto Couplers

The main purpose of an optocoupler interface is to completely isolate the input circuit from the output circuit, which normally means there will be two completely

[Contact Us](#)

## Product Wiring Diagram



## Contact Us

---

For datasheets, pricing, or custom fiber access solutions, please visit:  
<https://frindel.es>