

Can the cable tray be placed above the explosion-proof door





Can the cable tray be placed above the explosion-proof door



Specifying Cable Infrastructure in Hazardous Locations per NEC

Certain types of cable are specified for each hazardous area classification. In addition to selecting the appropriate cable, proper installation techniques must also be followed. When installing the cable, it

[Contact Us](#)

Cable Tray SHIB NAL

When cable trays are overfilled beyond the fill criteria established by the NEC, add another cable tray system above, below, or next to the overfilled tray. Allow enough working space around the added

[Contact Us](#)



Prevent Fire and Electric Hazards When Cable Trays Used

If not designed and installed properly, wiring inside cable trays may pose hazards such as fire, electric shock, and arc-flash blast events.

[Contact Us](#)



Cable Tray Technical Guide A practical guide to product selection and

Cable tray installed in a hazardous location must contain only those cables that are appropriate for this type of environment as defined in Chapter 5 of the NEC.



[Installation_Guide_Hazardous_Areas_0908_CS](#)

Intrinsically safe wiring will never have enough energy available within the defined hazardous area to ignite any explosive or combustible mixture of gasses, dusts, or metals.

[Contact Us](#)

Direct and indirect entries into explosion-proof electrical

The conductors passing through the metal pipes are sealed in the sealing fitting and then enter the explosion-proof enclosure. The entry through the 'Ex d' cable gland

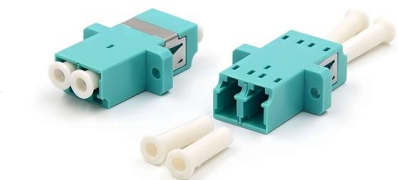
[Contact Us](#)



The 'Ex d' type of protection: electrical cable installation

In areas at risk of explosive atmospheres, systems with electrical cable installations are nowadays a valid alternative to traditional systems with conduits systems.

[Contact Us](#)





Explosion-proof electrical plant: conduit installation

The use of cables for electrical equipment connection in potentially explosive atmospheres is now a common practice. Some time ago, explosion-proof

[Contact Us](#)



Cables and Lines for Hazardous Areas

Almost all flame-proof devices undergo a test without cable connection. If an improper cable or cable gland is selected, the entire protection system can become unsafe.

[Contact Us](#)



Cable Trays In Hazardous (Classified) Locations , Cable Tray Institute

This cable can be installed in cable trays in Division 1 locations and can also provide fire protection. Cable tray systems must comply with article 318 with respect to ampacity, grounding, fill, spacing and

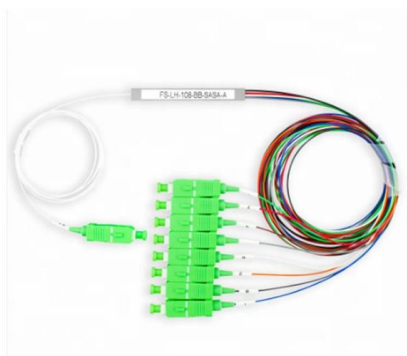
[Contact Us](#)



Fire Safety Considerations for Cable Trays: Protecting

Learn about essential fire safety measures for cable trays to safeguard your electrical infrastructure. Discover expert guidance and solutions

[Contact Us](#)





Cables and Lines for Hazardous Areas

Explosion-proof devices are typically placed in ATEX zones 1 or 2 whereas control cabinets are usually installed in safe areas. This means that the cable which connects a device with a control cabinet

[Contact Us](#)



Explosion-Proof and Flameproof Equipment in Hazardous Locations

Practical guide to explosion-proof and flameproof equipment in hazardous locations: principles, markings, installation, cable entries, inspection, and best practices for explosive

[Contact Us](#)



Firestopping Requirements for Cable Trays and

Cable trays and busways at floor level or at slab penetrations shall have a waterstop no less than 50 mm in height. At slab penetrations, provide

[Contact Us](#)



Installation guide for hazardous areas

This is the principle behind explosion-proof wiring. Even if the circuit did ignite a quantity of hazardous mixture, the wiring container, can "contain" the resulting explosion and cool any escaping hot gasses

[Contact Us](#)



Precautions for Cable Tray Installation

We have summarized the precautions for cable tray installation to help customers quickly and correctly install cable trays.

[Contact Us](#)



When to Use Seal Offs and Barriers for Explosion Proof

Combustible liquids, vapors and dust are capable of entering equipment via very small openings. Because of this, seal fittings or seal offs must

[Contact Us](#)

Explosion Proof Devices: Safety Standards and

Neglecting Training: Failing to train personnel on the proper use and maintenance of explosion proof devices can compromise safety. Conclusion As

[Contact Us](#)



How does it work? Why it's important About ATEX My account Sign Up Sign In Features ATEX news ATEX downloads BLOG Content

[Contact Us](#)



How to Prevent Fire and Electric Hazards in Cable Tray

Safety of a cable tray is not a matter of compliance with codes, but a matter of saving human life and billions of dollars' worth of infrastructure. Poorly

[Contact Us](#)



Technical Guidelines for Cable Tray Installation and

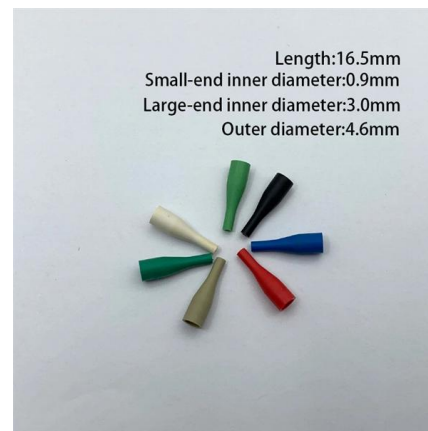
Cable tray installation must comply with specific technical standards to ensure electrical safety, system reliability, and long-term maintainability. This document

[Contact Us](#)

Hazardous Locations: Safe Electrical Cable , IEC

Learn how to choose safe electrical cables for hazardous locations, including key safety standards, material considerations, and compliance

[Contact Us](#)



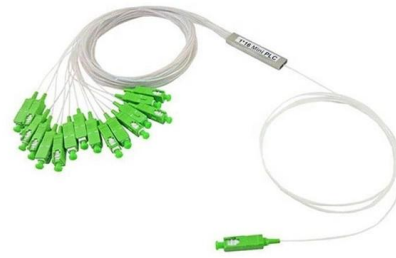
What is Explosion Proof? A Look Into Control Panels

Examples of Explosion-Proof Enclosures One example of explosion-proof standards is shown by ADALET enclosures' products. The company

[Contact Us](#)

One of the most important features of cable tray is that tray cable can easily be installed in existing trays if there is space available. Cable tray wiring systems allow wiring additions or modifications to be

[Contact Us](#)



How to Wire an Explosion-Proof Distribution Box and

Explosion-proof electrical equipment, such as explosion-proof distribution boxes, is specifically designed for hazardous environments where flammable gases,

[Contact Us](#)

Explosion Proof Enclosures: Safety Standards for

Explosion Proof enclosures are indispensable to industrial facilities and other organizations that use or store electrical components in hazardous,

[Contact Us](#)



Safety Distances Between Cable Trays and Pipes

Learn about the importance of cable trays and pipes safety distances in ensuring system reliability. Explore standards, factors, and measures to

[Contact Us](#)



Contact Us

For datasheets, pricing, or custom fiber access solutions, please visit:
<https://frindel.es>