

Can a 10kV busbar be branched





Overview

The busbar's material composition and cross-sectional size determine the maximum current it can safely carry.



Can a 10kV busbar be branched



What is Electrical Bus Bar? Types, Advantages

It is clear that sectionalization of busbar prefers isolator with circuit breaker. Sectionalized single bus-bar has following advantages (over single bus

[Contact Us](#)

Busbar Design Standards for MV Switchgear

Avoid certification failures and costly redesigns. This guide compares IEC, ANSI, and GB busbar standards with real

[Contact Us](#)



What Is a Bus Bar in Electrical Engineering? Full Guide

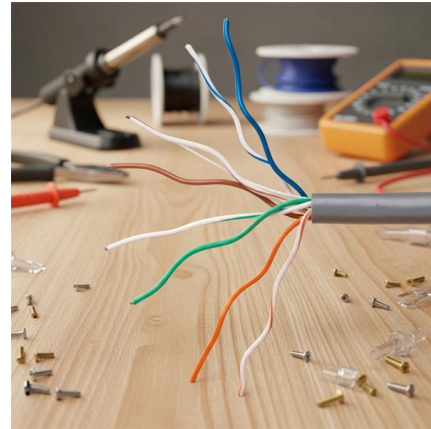
What Is a Bus Bar in Electrical Systems? A bus bar (also spelled busbar) is a metallic strip or bar used in electrical power distribution to conduct electricity

[Contact Us](#)

Electrical busbar system

Advanced CNC technology allows for the processing of copper and aluminum busbars with minimal material deformation, ensuring compliance with

[Contact Us](#)



Bus Bar : Different Types, Advantages & Disadvantages

It contains an isolator and the circuit breaker. If any fault occurs, the circuit breaker gets tripped off and the part of the bus bar, which is faulty can easily be

[Contact Us](#)



Single busbar systems up to 5000 A

The permissible rated busbar current of the proven switchgear type ZX2 is increased by parallel connection of the two busbar systems. The two physical busbar systems are combined electrically into a

[Contact Us](#)



Bus Bar Arrangement in Substation

Bus Bar Arrangement in Substation When a number of generators or feeders operating at the same voltage have to be directly connected electrically, bus-bars

[Contact Us](#)





Electrical Busbars

Electrical busbars conduct high current within power systems. Learn about types, maintenance, failures, and how to extend their lifespan.

[Contact Us](#)



How can you select the proper busbar?

However, in some arrangements of busbars, it requires extra protection which make the system expensive and the reliability of the system is badly effected when any

[Contact Us](#)

Study on Design of Main Busbar System of Large-current High-voltage

It is lack of relatively perfect scheme for the design of 10kV large-current switchgear above 4000A, in particular with many problems on selection and design of



[Contact Us](#)

Busbar 101

With busbar power, there is less bending, drilling, and tapping copper in preparation for deployment, and panels utilizing busbar can be mounted and installed in a fraction of the time compared to block-and

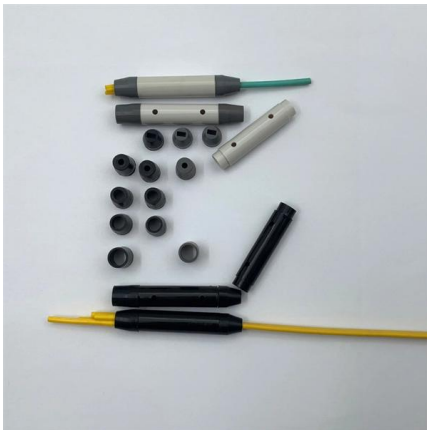


[Contact Us](#)



The busbar's material composition and cross-sectional size determine the maximum current it can safely carry. Busbars can have a cross-sectional area of as little as

[Contact Us](#)



How to Design Busbar Systems for Substations

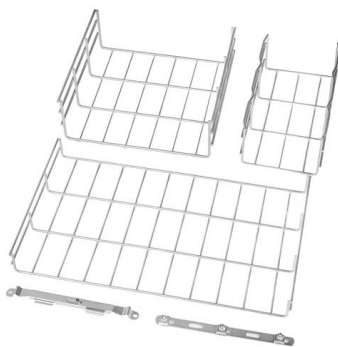
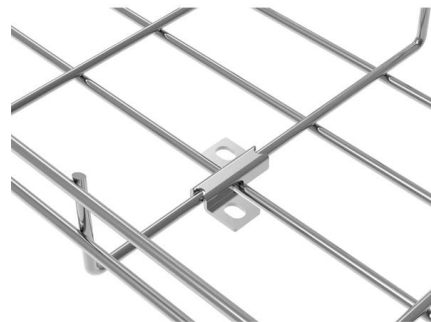
Learn how to design efficient substation busbar systems with calculations, examples, and best practices.

[Contact Us](#)

Busbars 101: A Comprehensive Guide

Introduction to Busbars in Electrical Systems
Busbars are essential components in electrical power systems, designed to distribute power efficiently within switchgear, panel boards, and distribution

[Contact Us](#)



LMZ-10, LMZJ1-10 Indoor Wall-Through Busbar-Type Epoxy Resin

LMZ-10 / LMZJ1-10 indoor wall-through busbar-type epoxy resin cast current transformer for 10kV, 11kV and 12kV class medium-voltage switchgear. Designed for current measurement, energy metering

[Contact Us](#)



Copper for Busbars - Guidance for Design and Installation

The design of the mounting system is an important factor and one that is becoming more important with the increase in harmonic currents, which can

[Contact Us](#)



Busbar Design: Engineering for High-Power DC

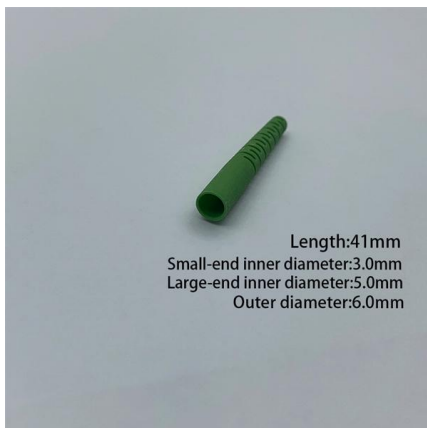
Busbars simplify high-current distribution, reduce clutter, and can improve reliability if sized correctly. Busbar design is still resistance/heat

[Contact Us](#)

Busbar Processing & Installation: Your Ultimate Guide

Ever wondered how busbars, the unsung heroes of electrical distribution, are processed and installed? This article delves into the intricate

[Contact Us](#)



Busbar

The busbar's material composition and cross-sectional size determine the maximum current it can safely carry. Busbars can have a cross-sectional area of as little as 10 square millimetres (0.016 sq in), but electrical substations may use metal tubes 50 millimetres (2.0 in) in diameter or more as busbars. Aluminium smelters use very large busbars to carry tens of thousands of amperes to the electrochemical cells that produce aluminium

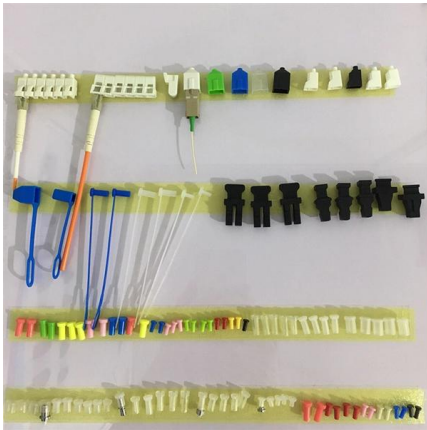


What Is a Bus Bar in Electrical Engineering? Full Guide

Q3: Can bus bars be used in home installations?
A: Yes, though more common in commercial and industrial settings, compact bus bars are used in residential

[Contact Us](#)

[Contact Us](#)



Flexible Busbars

Thanks to the flexibility of our busbars, it is possible to use one busbar model for different installation dimensions and to mount it in different applications.

[Contact Us](#)

Substation Components--Part 5: Busbar Configurations

Substation Components--Part 5: Busbar Configurations Here, we provide an overview of common substation busbar configurations--Single Bus,

[Contact Us](#)



Bus Bar Size Calculator

Current carrying capacity and budget as under size busbar can cause heating and damage in busbar while over size busbar can affect the cost of project. By using

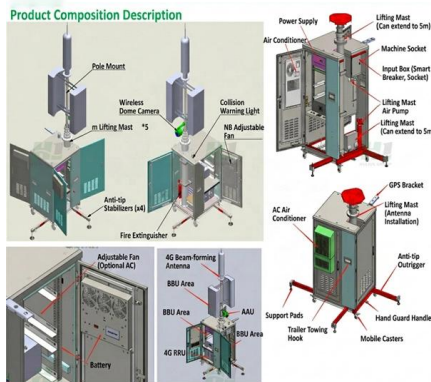
[Contact Us](#)



What is Electrical Bus-Bar?

The various types of busbar arrangement are used in the power system. The selection of the bus bar is depended on the different factor likes reliability,

[Contact Us](#)



Design Guide for bus bars , Mersen

The plating can provide advantageous electrical properties, decreasing the voltage drop. When gold is used, it is generally only plated on termination surfaces to

[Contact Us](#)

Bus Bar Calculator

Calculate current capacity, voltage drop, and temperature rise for electrical bus bars. This calculator helps electrical engineers, panel builders, and power system designers to properly size and evaluate

[Contact Us](#)



Busbar Power Distribution Explained: Benefits, Types,

Discover the benefits, types, and applications of busbar power distribution systems. Learn why busbars offer efficient, safe, and space-saving

[Contact Us](#)

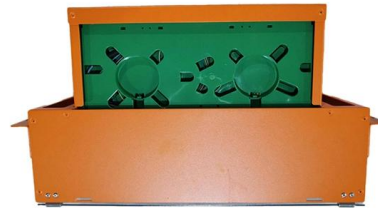




Types of Busbars & Schemes - Explained with Applications

Table of Contents A busbar is a metallic conductor that serves as a central hub for multiple electrical connections. It can be solid, hollow, or flexible,

[Contact Us](#)



Busbar Current Calculator & Formula Online Calculator Ultra

Can the material carry capacity factor vary? Yes, it depends on the material's conductivity and thermal properties. How do environmental conditions affect busbar performance? Ambient

[Contact Us](#)

Contact Us

For datasheets, pricing, or custom fiber access solutions, please visit:
<https://frindel.es>