

Cable trays are laid every few meters



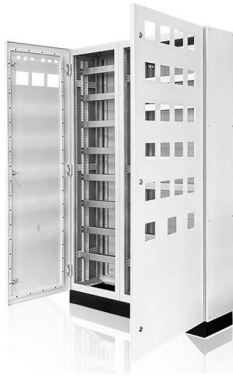


Overview

When installing two cable trays in parallel at the same height, the distance between them should be no less than 0. This spacing is crucial for adequate maintenance access, ease of inspection, and ensuring proper airflow for effective heat dissipation. Cable trays are used for supporting insulated electrical cables for power and communication applications. (4) Draw the route of the bridge on the parallel diagram, and indicate the coordinates or positioning size and elevation of the starting point, end point, turning. After determining the routing of the cabling, a network cabling project initially needs to consider the laying of cable trays, which can be made of metal, conduit, or plastic (PVC) tubes based on the material used. In industrial settings, electrical and instrumentation (E&I) cable trays or bridge racks play a critical role in organizing and supporting power, control, and signal cables across facilities.



Cable trays are laid every few meters



CABLE TRAYS GENERAL INFORMATION AND

In order to install the cable tray supports, first find the required elevation from the floor to the bottom of the cable tray and establish a level line with a laser or a

[Contact Us](#)

Cable Laying: Everything You Must Know

After determining the routing of the cabling, a structured cabling project initially needs to consider the laying of cable trays, which can be made of metal, conduit, or

[Contact Us](#)



IEC Standard for Cable Tray: Complete Technical Guide

IEC Standard for Cable Tray: Complete Technical Guide The International Electrotechnical Commission (IEC) provides detailed guidelines for

[Contact Us](#)

Precautions for Cable Tray Installation

We have summarized the precautions for cable tray installation to help customers quickly and correctly install cable trays.

[Contact Us](#)



Cable Tray Capacity Calculator

This calculator determines the maximum number of cables that can be safely housed within a cable tray based on its dimensions and the cross-sectional

[Contact Us](#)



Cable Tray SHIB NAL

Cable trays are not raceways, but they are treated as a structural component of a facility's electrical system. Cable trays are a part of a planned cable management system to support, route, protect and

[Contact Us](#)



Cable Tray Spacing Standards for Installation and Safety

Discover the essential cable tray spacing requirements for safe and efficient installation. Learn key standards, horizontal and vertical spacing, and more.

[Contact Us](#)

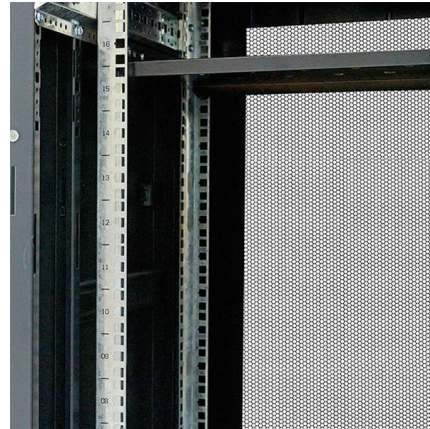




Tie Down Practices for Multiconductor Cables in Cable Trays

In horizontal cable trays where cable spacing is to be maintained, the cables should be tied down at approximately 10 foot intervals. For horizontal ventilated channel cable trays, there are

[Contact Us](#)



Explaining NEC Article 392 on Cable Trays

NEC Article 392 explains cable trays, their components, appropriate wiring methods for cable trays, and instances where they are and are not

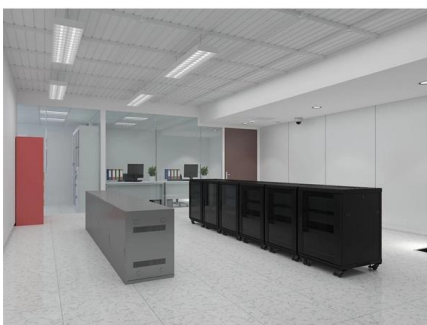
[Contact Us](#)



Types of Cable Trays - Advantages, Applications and Sizes

Explore the types of cable trays, their advantages, applications, and standard sizes. Learn how they improve cable management and support various industries.

[Contact Us](#)



Typical Design Philosophy of Cable Trays for Power

The highest voltage grade cables will be laid in the top-most tray and other voltage grade cables in the lower trays in descending order. The minimum thickness of

[Contact Us](#)



Method Statement installation of Cable Trays and Ladders

Cable trays and ladders are stored in a horizontal position on a flat surface with timber support placed at an interval of one meter and covered to

[Contact Us](#)



Best Practice Guide to Cable Ladder and Cable Tray Systems

This guide covers cable ladder systems, cable tray systems, channel support systems and associated supports intended for the support and accommodation of cables and possibly other electrical

[Contact Us](#)

Practices for grounding and bonding of cable trays

Grounding and bonding of cable trays There are three wiring options for providing an EGC in a cable tray wiring system: An EGC conductor in or on

[Contact Us](#)



LoRa handheld portable base station



Cable Tray Fill Rules (NEC 392)

This guide covers the cable tray types and their appropriate applications, the fill rules for each configuration, ampacity derating requirements,

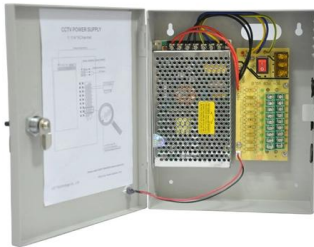
[Contact Us](#)



Cable Tray Support Spacing: Key Guidelines Explained

Explore the essential cable tray support spacing requirements for safe and efficient installations. Learn NEC guidelines for perforated, ladder, and wire mesh trays.

[Contact Us](#)



Cable tray installation requirements-ZM Technology Co., Ltd.

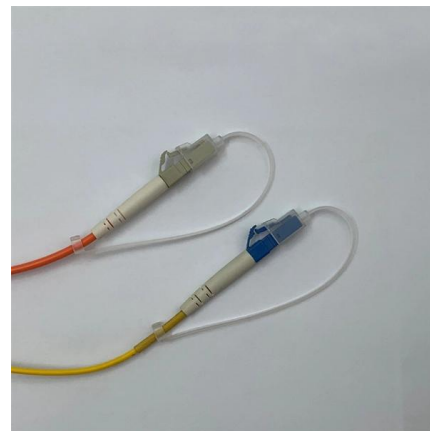
(3) When two sets of cable trays are laid in parallel at the same height, the clear distance between them shall not be less than 0.6m.

[Contact Us](#)

Cable Tray Systems: Requirements and Best Practices

Comprehensive guide to cable tray systems requirements: tray types, materials, loading, supports, bonding, routing, and best practices for safe electrical cable management.

[Contact Us](#)



100+ Essential Questions Answered About Cable Trays:

Discover over 100 expert answers about cable trays, covering key topics like material selection, load capacity, installation methods, and maintenance.

[Contact Us](#)



Core Principles for Electrical and Instrumentation Cable

By adhering to these principles, E&I cable tray layouts can achieve the essential balance of safety, efficiency, and durability. A well-planned layout not only meets

[Contact Us](#)



Cable tray installation requirements-ZM Technology Co., Ltd.

(8) When the cable is laid vertically in the cable tray, it should be fixed on the bracket of the tray at the upper end of the cable and at every interval of 1.5 meters. fixed at the meter.

[Contact Us](#)

Grounding Requirements for Electrical Cables, Cable Trays, and

Guidelines for grounding electrical cables, busbars, and cable trays in wiring projects, ensuring safety and compliance with industry standards.

[Contact Us](#)



Method Statement installation of Cable Trays and Ladders

This method statement covers the site installation of the cable tray & ladders and the requirements of checks to be carried out.

[Contact Us](#)



FAQ , Cable Tray Institute

Question: Is it necessary to provide tie-down cables installed in a cable tray? Answer: Yes; cables are tied down in cable trays to keep the cables in the cable tray, to maintain spacing between cables, or

[Contact Us](#)



NEC Article 392 Guide: Ensuring Compliance for Cable

Master NEC Article 392 with our comprehensive guide. Learn essential cable tray requirements for installation, grounding, and fill capacity to

[Contact Us](#)

Contact Us

For datasheets, pricing, or custom fiber access solutions, please visit:
<https://frindel.es>