

Cable tray turns right





Cable tray turns right



Rotate or Place Inverted Cable Tray

Unfortunately for this situation, when you copy another one or use trim command the cable tray keeps going right-side up. You can keep persistently re-mirroring with carefully placed

[Contact Us](#)

Setting Up Cable Tray in Revit MEP: A Step-by-Step Guide

Walk through placing cable tray in Revit MEP--loading fittings, setting routing preferences, drawing runs across floors, and resolving clashes with ducts and conduit.

[Contact Us](#)



Vertical cable tray loaded in wrong direction

The normal of a line tells Revit where the Cable Tray should be facing and since a vertical line doesn't have a good normal, Revit uses a Default

[Contact Us](#)

Cable Tray Failures: Types, Causes, and Prevention

However, like any other infrastructure, cable trays are prone to failures that can result in serious safety hazards, financial losses, and downtime.



GRP Cable Tray & Cable Ladders , EAE Electric

EAE Electric's GRP Cable Trays and Ladders set the industry standard with high strength, flexibility, and durability for cable support systems.

[Contact Us](#)



How to Install Cable Tray: A Comprehensive Guide to Different Cable

Welcome to our step-by-step guide on installing cable trays! In this video, we'll explore the different types of cable trays available and provide detailed instructions for their installation.

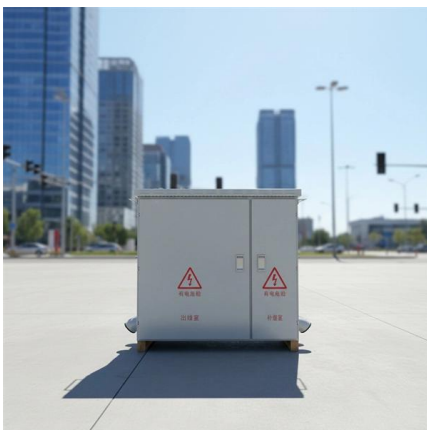
[Contact Us](#)



Make a (45-45) 90 Gusset Bend in Electrical Cable Tray In One Piece

How to make a 90 electrical cable tray bend to measurement with a gusset of your choice using one piece of tray. Great if you are new or just forgot how to do it, this easy to follow guide makes

[Contact Us](#)





How to Fix Common Cable Management Issues using

Discover common cable management problems and how cable tray accessories effectively solve them to ensure safety and performance.

[Contact Us](#)



How to Easily Create a 90-Degree Bend in Cable Tray , TikTok

Keywords: cable tray 90 degree bend, bend cable tray, marking cuts for cable tray, pinching cable tray, creating a 90-degree bend, cable management tools, electrician tips and tricks This information is AI generated and may return

[Contact Us](#)



Rotating horizontal cable tray to be ran vertically. : r/Revit

Rotating horizontal cable tray to be ran vertically. Anyone have a solution to rotating horizontal tray so it can be ran vertically? We've been asking for 13 years now, still no way to do it (that I'm aware of).

[Contact Us](#)



Cable Tray Systems Explained: The Right Solution for

Discover cable tray systems, including tray types, sizes, duty ratings and materials, and learn how to choose the right solution for safe cable management.

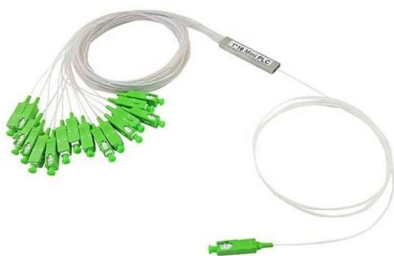
[Contact Us](#)



The Complete Guide to Cable Trays , Snake Tray

WHY IS CABLE MANAGEMENT NECESSARY? We live in a mobile world. It seems like everything these days is wireless, paperless, and touchless. We pay for

[Contact Us](#)



Zamet

Zamet SpA is one of the major Italian manufacturers of trunking systems for the conveyance of electric cables both in the civil and industrial environments, and it boasts over 40 years of extensive

[Contact Us](#)

Cable tray elbow upside down when drawing a run in

Users reported that when drawing a cable tray run, the elbow turning to the left is correct, but the elbow turning to the right is upside down. The vertical

[Contact Us](#)



Common Issues in Steel Cable Tray Installations

This article delves into typical troubleshooting scenarios encountered with cable tray systems, highlighting practical prevention methods and best

[Contact Us](#)





Cable trays

We offer a wide range of cable tray systems to support tubing, electrical cables and instrumentation. Our cable trays are produced in fit for purpose materials like

[Contact Us](#)



Connecting Cable Trays: Your Guide to Secure and

Learn common methods for connecting cable trays safely and efficiently. Our guide covers splice plates, quick-connects, and key tips for secure

[Contact Us](#)



Rotate or Place Inverted Cable Tray

Not sure why you'd want upside down cable tray, but you can place one then mirror it in section: Unfortunately for this situation, when you copy another one or use trim command the cable

[Contact Us](#)



Make a 90 Bend in Electrical Cable Tray

The Easy Guide to How to make a 90 electrical cable tray bend to measurement of your choice. Great if you are new or just forgot how to do it, this easy

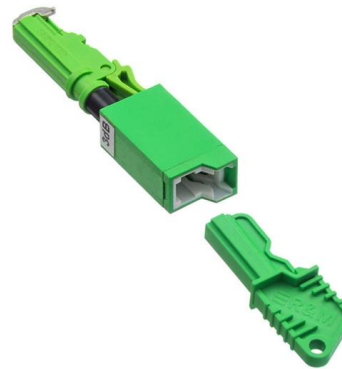
[Contact Us](#)



Types of Cable Trays: Ladder, Perforated, Basket, Solid

Cable trays support insulated electrical cables in industrial and commercial settings. There are several types of cable trays, including ladder,

[Contact Us](#)



Cable Tray Placement Options

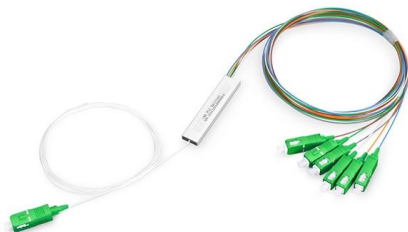
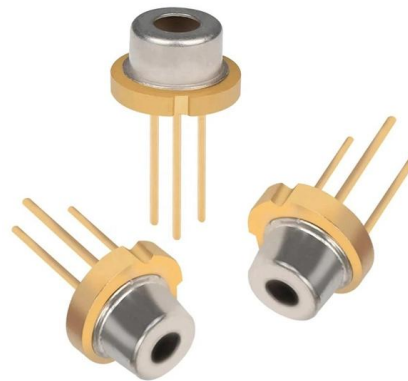
Justification: Opens the Justification Settings dialog where you can specify Horizontal Justification, Horizontal Offset, and Vertical Justification for the cable tray. Automatically Connect: Lets you

[Contact Us](#)

Cable tray wrong direction bug

This is most certainly a bug. Cable trays have no directions. Every direction should be a correct direction. Are there any easy workarounds? Is it

[Contact Us](#)



How to create vertical cable tray in Revit

How to create a vertical cable tray in Revit to match the one shown in the image: This can be done with the free Revit MEP Fabrication extension. Use

[Contact Us](#)



Master the Cable Tray Secret to Perfect Back of Bend

How to Master back of bend measurements on electrical Cable Tray. Make a 90 electrical cable tray bend to measurement with a gusset of your choice using one piece of tray.

[Contact Us](#)



Innovative Cable Tray Accessories for Safer, Efficient

Explore innovative accessories for cable trays that boost safety, improve efficiency, and simplify installations across industrial and commercial projects.

[Contact Us](#)

Cable Tray Placement Options

Automatically Connect: Lets you automatically connect to the snaps on a component when starting or ending a cable tray segment. This option is useful for connecting segments at different elevations.

[Contact Us](#)



- IP65/IP55 OUTDOOR CABINET
- WATERPROOF OUTDOOR CABINET
- 42U/27U
- OUTDOOR BATTERY CABINET



#datacenter #itinfrastructure #smarthands #networkengineering

Pre-terminated fibre is easy to use -- and easy to turn into a mess if you haven't decided how the cables will be laid down. When you don't yet have a finalised plan for what each cabinet will

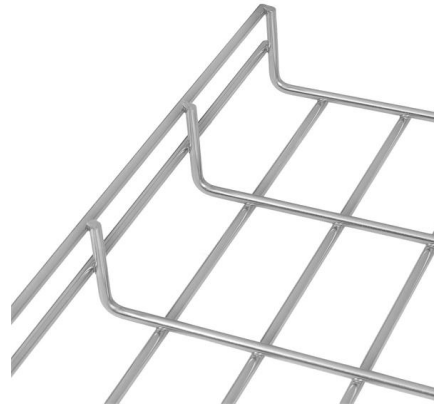
[Contact Us](#)



How to Fix Common Cable Management Issues using

This comprehensive guide investigates the most frequent wire management challenges faced in real-world setups and demonstrates how the

[Contact Us](#)



Common Issues in Steel Cable Tray Installations

Whether installed as stainless steel cable trays, these components offer durable and flexible solutions for routing cables safely. However, improper

[Contact Us](#)

Contact Us

For datasheets, pricing, or custom fiber access solutions, please visit:
<https://frindel.es>