

# Cable tray support pipe quota

## 1×2 ~ 2×64 Cassette Type Optical Splitter

Uniform splitting ratio, excellent directivity and low insertion loss





## Overview

---

Cable tray support quantity can be calculated using a simple formula:  $\text{Support Quantity} = \frac{\text{Total Length}}{\text{Support Spacing}} + 1$   $\frac{20}{2} + 1 = 11$  supports In a typical project, a 20-meter cable tray with 2-meter spacing requires 11 supports. When developing our cable support OBO can offer reliable solutions for systems, three attributes are at the routing and fastening cables securely core of what we do: efficiency, resil- for each of these installation challeng- ience and safety. All illustrations, descriptions and technical information included in this document are provided as indications and can cable trays are equivalent. The mechanical and electrical characteristics, tests, certifications, overall quality management, recommendations mentioned. Is your cable tray system optimized for safety, dependability, space and cost savings?

Cable tray (or cable ladder) systems are a popular alternative to electrical conduit systems, as they have an outstanding record for dependable service, design flexibility and cost savings in commercial and. maintain spacing or to keep cables in place when the tray is ect the minimum bend ra-dius for cables as they exit the bottom of the cable tray. Cable tray sizing looks simple on paper, but in real projects it affects cable safety, thermal performance, maintainability, future expansion, and inspection approval.



## Cable tray support pipe quota

---



### **B-Line series Cable Tray Design Considerations**

Our wind certification report provides you with list of acceptable B-Line series cable tray supports, fittings and covers based off of the environmental conditions, cable loading, and type of cable tray in your

[Contact Us](#)

### **Explaining NEC Article 392 on Cable Trays**

NEC Article 392 explains cable trays, their components, appropriate wiring methods for cable trays, and instances where they are and are not

[Contact Us](#)



### **CABLE TRAY SYSTEMS GUIDE**

Steel Ladder System Hubbell's NEXTFRAME® Ladder Tray is the effective and widely used cable runway that supports and delivers bundles of cable between cabinets, racks, and closets, along

[Contact Us](#)

### **Cable Tray Technical Guide A practical guide to product selection and**

Cable tray length is selected based on the load to be supported, the distance between the supports (also referred to as the span), and handling and installation constraints.



### Mastering Cable Tray Installation , Step-by-Step Guide for a Seamless

Learn how to install cable trays correctly. Get the ultimate step-by-step guide on setting up a seamless and reliable cable management system.

[Contact Us](#)

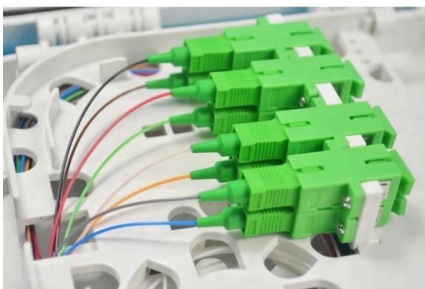


### Technical Specification for Cable tray installation and cable laying work

1. Scope :- This specification covers the following major activities; - Fabrication and installation of Mild Steel (MS) support structure for Galvanized Iron (GI) Cable tray. - Installation of perforated GI Cable



[Contact Us](#)



### Guide to cable support systems

The load capacity of the cable trays according to the support width can be read off in the diagram using load curves - here, shown as an example for a cable tray with the tray widths 100 to 600 mm.

[Contact Us](#)



## **Cable Tray Technical Guide A practical guide to product selection and**

SOLID-BOTTOM CABLE TRAY Providing additional cable protection, solid-bottom cable tray is sometimes preferred to support and protect numerous small instrumentation and control cables.

[Contact Us](#)



## **How to Calculate the Cable Tray Support Quantity**

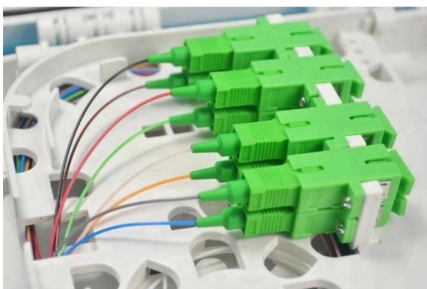
Learn how to accurately calculate cable tray support quantities in electrical installation projects. Our guide covers methods, tools, and practical

[Contact Us](#)

## **Equipment and Piping Layout : Pipe Racks**

Design of Pipe Rack involves considerable planning and cor-ordination with other engineering groups. Rack Design involves following activities. Pipe rack width

[Contact Us](#)



## **Cable Tray Sizing Calculator , IEC 61537 & NEC 392 Guide**

A cable tray calculator is a design tool that helps you figure out the right tray width and make sure that the planned number of cables fits within the allowable fill limitations.

[Contact Us](#)



## Best Practice Guide to Cable Ladder and Cable Tray Systems

This publication is intended as a practical guide for the proper and safe\* installation of cable ladder systems, cable tray systems, channel support systems and associated supports.

[Contact Us](#)



### Precautions for Cable Tray Installation

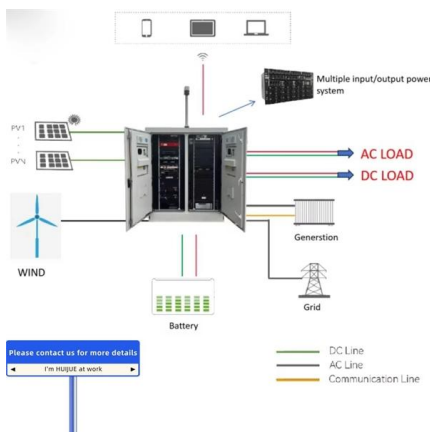
We have summarized the precautions for cable tray installation to help customers quickly and correctly install cable trays.

[Contact Us](#)

### CABLE TRAY SUPPORT SYSTEM

The uniquely designed Strut Channel is used to mount, support, and connect lightweight structural loads for supporting cable tray in Raised access floor system. These include Pipes, conduits, cable trays,

[Contact Us](#)



### Cable Tray

All changes of direction must be supported in the immediate vicinity of the joints (distance [Contact Us](#))



## FAQ , Cable Tray Institute

Question: Are Cable Trays listed? Answer: Metallic cable trays are not required to be listed because they are a support system. Metal cable trays can be U.L. classified with regard to suitability for use

[Contact Us](#)



### B-Line series Cable Tray Design Considerations

As an industry leader in cable tray, Eaton offers one of the widest ranges of cable management solutions available in the market today with its B-Line series portfolio. With unmatched quality and service, we

[Contact Us](#)

### Guide to cable support systems

Support systems for cable support structures are used to bridge large loads and support spacings and to create complex section routes. The systems allow large support spacings of wide span systems

[Contact Us](#)



### NEC Article 392 Guide: Ensuring Compliance for Cable

Master NEC Article 392 with our comprehensive guide. Learn essential cable tray requirements for installation, grounding, and fill capacity to

[Contact Us](#)

### Cable Tray Spacing Standards for



## Installation and Safety

Key Factors Impacting Cable Tray Spacing  
Understanding cable tray spacing is key to meeting safety regulations and maintaining system

[Contact Us](#)



## GUIDE CABLE TRAYS TECHNICAL

NEMA VE 1-2017 Specifies requirements for metal cable trays and associated fittings designed for use in accordance with the rules of Canadian Electrical Code, Part I and the National Electrical Code®

[Contact Us](#)

## Safety Distances Between Cable Trays and Pipes

Learn about the importance of cable trays and pipes safety distances in ensuring system reliability. Explore standards,

[Contact Us](#)



## Chapter 14 Cable Support systems

Cable separation within cable management systems More use of protection by location than is typical in US installations. The use of basket tray is typical for light weight last meter cable runs in onshore

[Contact Us](#)



## Cable Tray Technical Guide A practical guide to product selection and

Cable Tray Technical Guide A practical guide to product selection and installation This guide for engineers and installers has been developed by ABB as a practical reference regarding cable tray

[Contact Us](#)



## Pipe Rack and Rack Piping Design Considerations

Pipe racks carry process, and utility piping, and also include instrument and electrical cable trays, as well as equipment mounted over all of these. Fig. 1, shows a

[Contact Us](#)

## Chapter 14 Cable Support systems

To assist this selection process a useful approach can be to choose a likely size of tray or ladder and then to estimate the maximum cable weight which is capable of being contained within it.

[Contact Us](#)



## Criteria for Sizing, Designing, Installing and Supporting of Cable-Tray

9.3 Tray Rigidity: For pipe racks, building steel, or tee-structure mountings for which support spacing is determined by others, tray rigidity shall be selected from the manufacturer's data based on the

[Contact Us](#)



## CABLE TRAYS GENERAL INFORMATION AND

Cable tray systems are to be installed so they are accessible. If possible 300mm minimum should be left above or between installed systems to allow for cable

[Contact Us](#)



### Cable Tray SHIB NAL

Cable trays are not raceways, but they are treated as a structural component of a facility's electrical system. Cable trays are a part of a planned cable management system to support, route, protect and

[Contact Us](#)



## Contact Us

---

For datasheets, pricing, or custom fiber access solutions, please visit:  
<https://frindel.es>