

Cable tray semi-open tee dimensions





Cable tray semi-open tee dimensions



Cable Tray Dimensions and Standards

The document discusses perforated and solid bottom cable trays for Southern Asia. It provides specifications for straight sections of cable tray in 25mm and 50mm

[Contact Us](#)

Cable Tray Width, Dimensions and Specifications as per

Learn about cable tray width dimensions and specifications as per NEC standards. Understand types, sizes, materials, and installation guidelines for safe and

[Contact Us](#)



Cable Tray Size Calculation for Project Engineers

Cable trays are essential for organizing and supporting electrical and communication cables, as well as assuring safe installations. Choosing the

[Contact Us](#)

GM7571_CT Lead Time Info dd

Each section of tray and each fitting comes with 1 pair of splice plates and hardware, 2 pairs for Tees, 3 pairs for Crosses.

[Contact Us](#)



U-LI Steel Cable Tray Catalogue , PDF , Screw , Length

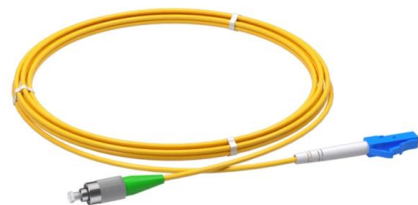
It provides details on the product range which includes perforated tray series for light, medium, and heavy duty applications. It also lists standard sizes and dimensions

[Contact Us](#)

Cable tray manual

Nearly every aspect of cable tray design and installation has been explored for the use of the reader. If a topic has not been covered sufficiently to answer a specific question or if additional information is

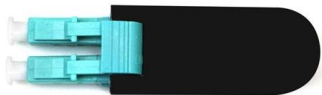
[Contact Us](#)



cable tray(digital copy)

ACCESSORIES Our supply includes Coupler Plates & Fasteners. Accessories such as Bend/Tee/Elbow are optional as per requirement.

[Contact Us](#)

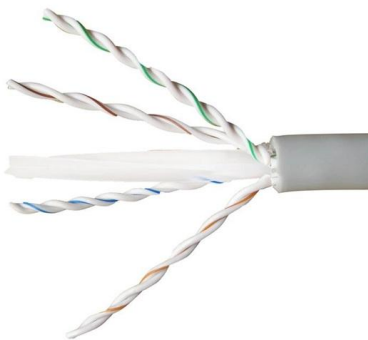




Tray Cable Size Chart: Choosing the Right Gauge

Choosing the correct tray cable gauge is a balance of performance, safety and compliance. The tray cable size chart offers a solid starting point, but realworld conditions--like run

[Contact Us](#)



Cable Tray Technical Guide A practical guide to product selection and

A practical guide to product selection and installation This guide for engineers and installers has been developed by ABB as a practical reference regarding cable tray characteristics, installation, and

[Contact Us](#)

LEGRAND CABLE TRAYS TECHNICAL GUIDE

Not all cable trays are equivalent. The mechanical and electrical characteristics, tests, certifications, overall quality management, recommendations mentioned in this technical guide only apply to our

[Contact Us](#)

EFFICIENT FIELD TERMINATION

- 1. PREPARE** - Strip and clean the fiber
- 2. INSERT** - Fast and easy insertion
- 3. LOCK** - Secure connection achieved

No Polishing | No Epoxy

Eliminates cable excess length and pigtail splice storage. Designed for high-efficiency onsite installation.



Cable Tray Dimensions and Specifications as per NEC

Many electrical systems employ cable trays. They route cables safely & efficiently. NEC defines minimum cable tray size & electrical installation

[Contact Us](#)



Cable Tray Size Guide: How to Choose the Right Dimensions

Complete cable tray sizing guide with standard size chart, NEC calculation methods, and real engineering examples. Learn how to select the right cable tray dimensions for your project.

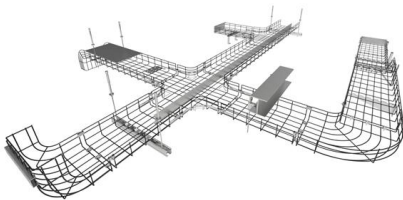
[Contact Us](#)



CableTray Book English

Refer to technical section page A8. Determine the tray series using the NEMA load/ span designations page A14, and sizing cable tray page A21. Select nominal depth and width of tray based on cable

[Contact Us](#)



GUIDE CABLE TRAYS TECHNICAL

In accordance with its continuous improvement policy, Legrand reserves the right to change the specifications and illustrations without notice. All illustrations, descriptions and technical information

[Contact Us](#)



MPO-MPO Low Smoke Halogen Free Sheath
Multimode 10 Gigabit 24 pole OM3
Insertion loss <0.35dB Return loss >50dB

Nonmetallic

To order To order a straight section of cable tray, select the appropriate size and material from the charts below and place those symbols in the sequence shown to form the complete catalog number.

[Contact Us](#)





Cable Tray Fitting

Cable Tray Fitting - Tee NOTE : Equal or un equal tees can be supplied. When ordering state widths W1xW2xW3

[Contact Us](#)



Cable Crossovers & Tees For Cable Trays , Metsec

We offer a range of cable crossovers and tees, available in both equal and unequal measures, for light, medium, and heavy duty cable tray systems in widths of

[Contact Us](#)

CABLE TRAY, CABLE LADDER, CABLE TRUNKING CATALOGUE

Cable Trunking. Straight sections of solid bottom cable trays constructed from single sheet of metal, providing excellent protection from external damage, they are used primarily for intrumental control,

[Contact Us](#)



CABLE TRAY SYSTEMS GUIDE

Material: Side Rails: Fitting side rails are I-beams with overall dimensions similar to straight tray sections. Rungs and Bottoms: Rung and Bottom designs are identical to similar straight cable tray

[Contact Us](#)



CableTray Book English

Determine the tray series using the NEMA load/ span designations page A14, and sizing cable tray page A21. Select nominal depth and width of tray based on cable loading. See sizing cable tray page A21.

[Contact Us](#)



CABLE TRAY, CABLE LADDER, CABLE TRUNKING CATALOGUE

STANDARD DIMENSIONS: Length (L): 2500mm, 3000mm. 00mm. Height (H): 50mm, 70mm, 1 Depth (D): 1.2mm, 1.5mm, 2.0mm.

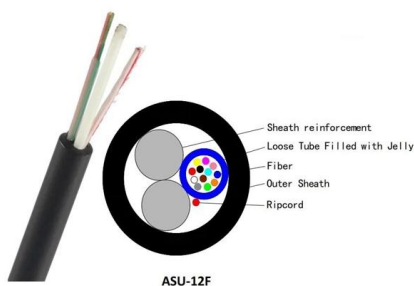
[Contact Us](#)



26 05 36 Cable Trays for Electrical Systems

Install temporary protection for cables in open trays to safeguard exposed cables against falling objects or debris during construction. Temporary protection for cables and cable tray can be constructed of

[Contact Us](#)



GUIDE CABLE TRAYS TECHNICAL

NEMA VE 1-2017 Specifies requirements for metal cable trays and associated fittings designed for use in accordance with the rules of Canadian Electrical Code, Part I and the National Electrical Code®

[Contact Us](#)



Contact Us

For datasheets, pricing, or custom fiber access solutions, please visit:
<https://frindel.es>